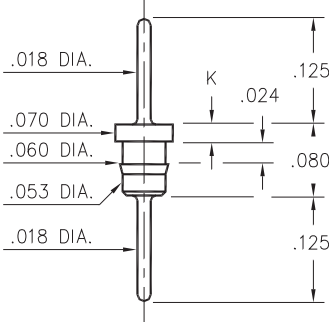


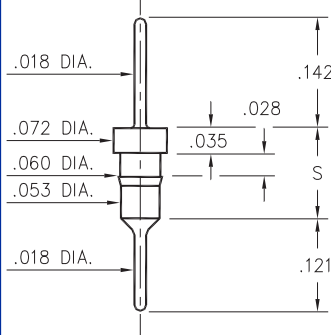
### 1752/6458



Basic Part Number	Length K
1752-0	.020
6458-0	.035

**XXXX-0-00-XX-00-00-03-0**  
Press-fit in .057 mounting hole

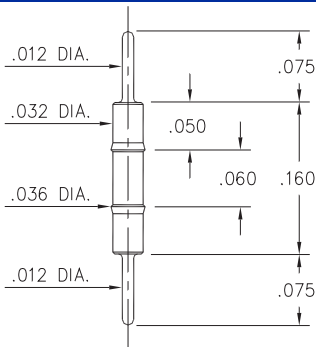
### 3413/8404



Basic Part Number	Length S
3413-0	.118
8404-0	.131

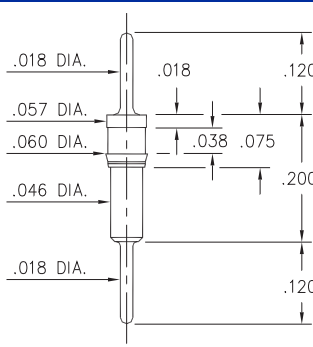
**X4XX-0-00-XX-00-00-03-0**  
Press-fit in .057 mounting hole

### 9075



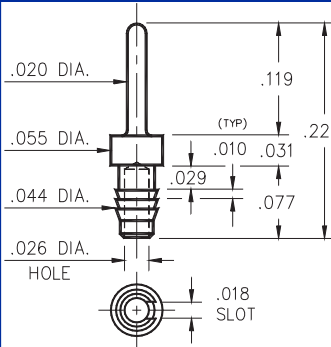
**9075-0-00-XX-00-00-03-0**  
Press-fit in .034 mounting hole

### 9218



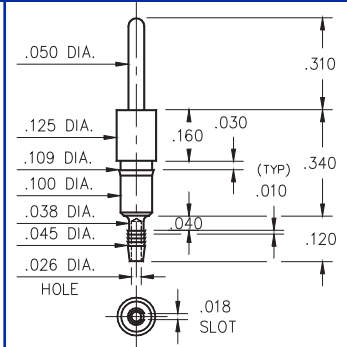
**9218-0-00-XX-00-00-03-0**  
Press-fit in .057 mounting hole

### 2617



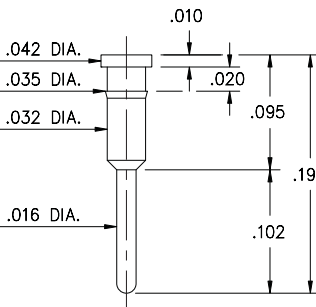
**2617-0-01-XX-00-00-03-0**  
Compliant press-fit in .040 ±.003 hole. For .060 → .100 thick board

### 8995



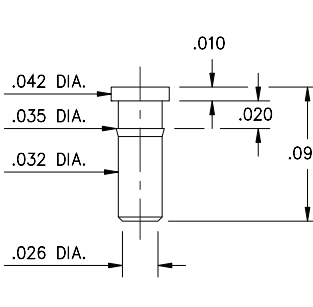
**8995-0-01-XX-00-00-03-0**  
Compliant press-fit in .040 ±.003 hole. For .060 → .100 thick board

### 1933



**1933-0-00-XX-00-00-03-0**  
Press-fit in .034 mounting hole

### 1935



**1935-0-00-XX-00-00-03-0**  
Press-fit in .034 mounting hole

#### SPECIFICATIONS

**PIN MATERIAL:**  
Brass Alloy 360, 1/2 Hard  
(Except where noted)

**DIMENSION IN INCHES**  
**TOLERANCES ON:**  
LENGTHS: ±.005  
DIAMETERS: ±.002  
ANGLES: ± 2°

**ORDER CODE: XXXX - X - 0X - XX - 00 - 00 - 03 - 0**

**BASIC PART #**

**SPECIFY PIN FINISH:**

- 01 200μ" TIN/LEAD OVER NICKEL
- ◇ 80 200μ" TIN OVER NICKEL (RoHS)
- ◇ 15 10μ" GOLD OVER NICKEL (RoHS)
- ◇ 21 20μ" GOLD OVER NICKEL (RoHS)
- ◇ 34 50μ" GOLD OVER NICKEL (RoHS)

