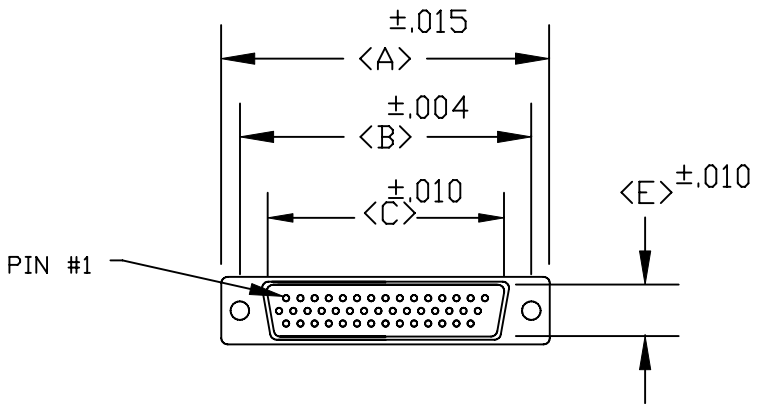
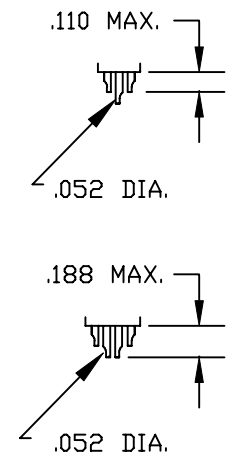
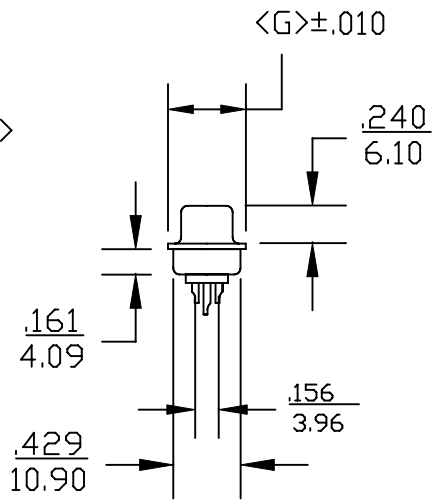
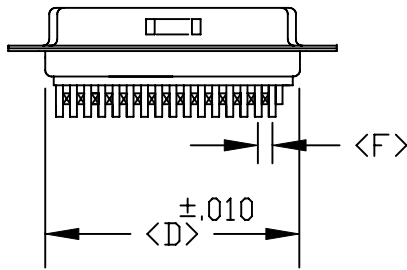


DESCRIPTION: **HIGH DENSITY MALE SOLDER CUP**



4 ROW

POS.	A	B	C	D	E	F	G
15	1.213	0.984	0.666	0.756	0.329	0.090	0.496
	30.80	24.99	16.92	19.20	8.36	2.29	12.60
26	1.543	1.312	0.994	1.091	0.329	0.090	0.496
	39.19	33.32	25.25	27.70	8.36	2.29	12.60
44	2.087	1.852	1.534	1.618	0.329	0.090	0.496
	53.00	47.04	38.96	41.10	8.36	2.29	12.60
62	2.732	2.500	2.181	2.256	0.329	0.095	0.496
	69.30	63.50	55.42	57.30	8.36	2.41	12.60
78	2.638	2.406	2.079	2.169	0.445	0.095	0.606
	67.00	61.00	52.80	55.10	11.30	2.41	15.39



180-YYY-10YLYY1

SERIES _____

POSITIONS _____

015
026
044
062
078

GENDER _____

1 = MALE
2 = FEMALE

TERMINATION _____

0 = SOLDER CUP

SHELL PLATING _____

2 = TIN
3 = NICKEL

HARDWARE OPTIONS _____

00 = NO HARDWARE (.120Ø HOLE)
01 = 4-40 CLINCH-NUT .098" BOARD SIDE
02 = 4-40 CLINCH NUT .250" BOARD SIDE
03 = 4-40 CLINCH NUT .250" MATING SIDE

PLATING OPTIONS _____

1 = GOLD FLASH
2 = 30 MICRO-INCH GOLD

MATERIALS:
 SHELL: STEEL; TIN OR NICKEL PLATED
 INSULATOR: PBT - BLACK (UL-94-VO)
 230° PROCESS TEMP.

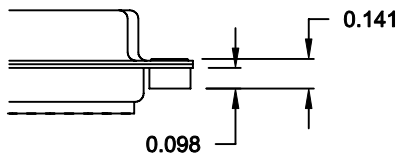
ELECTRICALS:
 CURRENT RATING: 2 AMPS
 CONTACT RESISTANCE: 15 mOHMS MAX.
 INSULATOR RESISTANCE: 1000MOHMS MIN.
 VOLTAGE: 500V FOR 1 MINUTE
 TEMPERATURE: -50° TO +100°
 RoHS COMPLIANT

NOTE: WILL ACCEPT UPTO 24 AWG WIRE

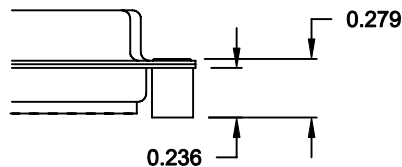
	THESE DRAWINGS AND SPECIFICATIONS ARE THE PROPERTY OF NorComp AND SHALL NOT BE REPRODUCED, COPIED OR USED AS THE BASIS FOR THE MANUFACTURE OR SALE OF APPARATUS WITHOUT WRITTEN PERMISSION.		DRAWN: WAYNE ROBBINS	DATE: 11-29-05
			CHECKED:	DATE:
NorComp			SCALE:	SHEET 1 OF 2
			DWG NO. 180-YYY-10YLYY1	

ALL CLINCH-NUTS ARE 4-40 INTERNAL THREADS

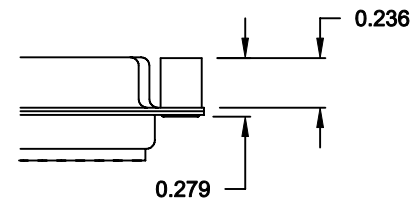
01X 0.098" (BOARD SIDE) - CN1




02X 0.236" (BOARD SIDE) - CN2



03X..... 0.236" (MATING SIDE) - CN8



DO NOT SCALE FROM DRAWING

	THESE DRAWINGS AND SPECIFICATIONS ARE THE PROPERTY OF NorComp AND SHALL NOT BE REPRODUCED, COPIED OR USED AS THE BASIS FOR THE MANUFACTURE OF SALE OF APPARATUS WITHOUT WRITTEN PERMISSION.		DRAWN: WAYNE ROBBINS	DATE: 11-28-05
			CHECKED:	DATE:
<h1>NorComp</h1>		SCALE:	SHEET 2 OF 2	REV 9
		DWG NO. 180-YYY-10YLYY1		

RoHS COMPLIANT