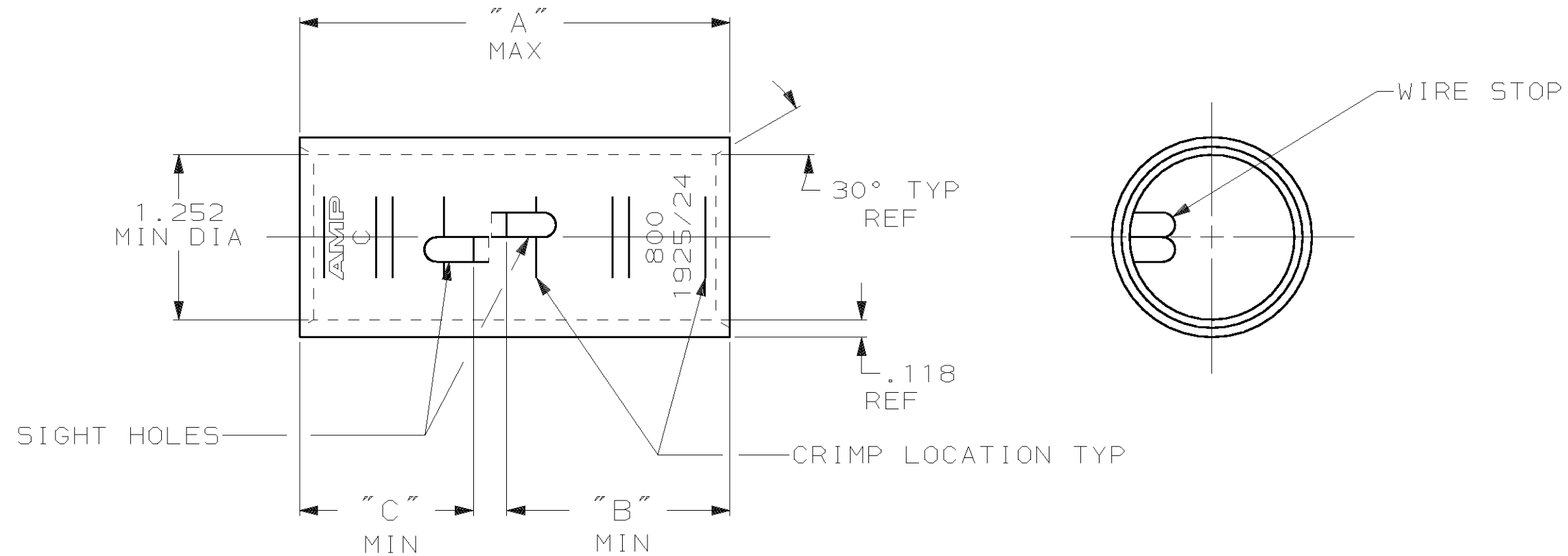


THIS DRAWING IS UNPUBLISHED. RELEASED FOR PUBLICATION, 19  
 © COPYRIGHT 19 BY AMP INCORPORATED. ALL INTERNATIONAL RIGHTS RESERVED.

LOC	DIST	P	F	REVISIONS				
G	86			ZONE	LTR	DESCRIPTION	DATE	APPD
					M	REV PER 0G3A-0637-01	030CT02	JR/MS



- ① TIN PL .000150 MIN THK MIL-T-10727
- ② PART NO: 324469; .486 LB.  
 PART NO: 1-324469-0; .486 LB.  
 PART NO: 2-324469-2; .548 LB.

1.32	1.69	3.31	△	750-850 MCM	COPPER ASTM-B-75 ANNEALED	2-324469-2
1.32	1.32	2.96	CLEANED △			1-324469-0
"C"	"B"	"A"	FINISH	WIRE RANGE	MATERIAL	PART NO
DO NOT SCALE PRINT. UNLESS SPECIFIED DIMENSIONS IN INCHES TOLERANCES ON:			DR 4/24/89 DK SCHRUM	AMP INCORPORATED Harrisburg, Pa. 17105		
2 PLC DEC ± -			CHK 4/24/89 MS FEHER			
3 PLC DEC ± -			APPD 11/8/89 WJ VOCKROTH	NAME SPLICE, BUTT, AMPPOWER WIRE SIZE: 800 MCM		
ANGLES ± -			APPD 11/8/89 TL SHUTTER			
MATERIAL SEE TABLE			PRODUCT SPEC -	SIZE <b>B</b>		
FINISH SEE TABLE			APPLICATION SPEC -			
			WEIGHT △	SCALE 1:1	SHEET 1 OF 1	