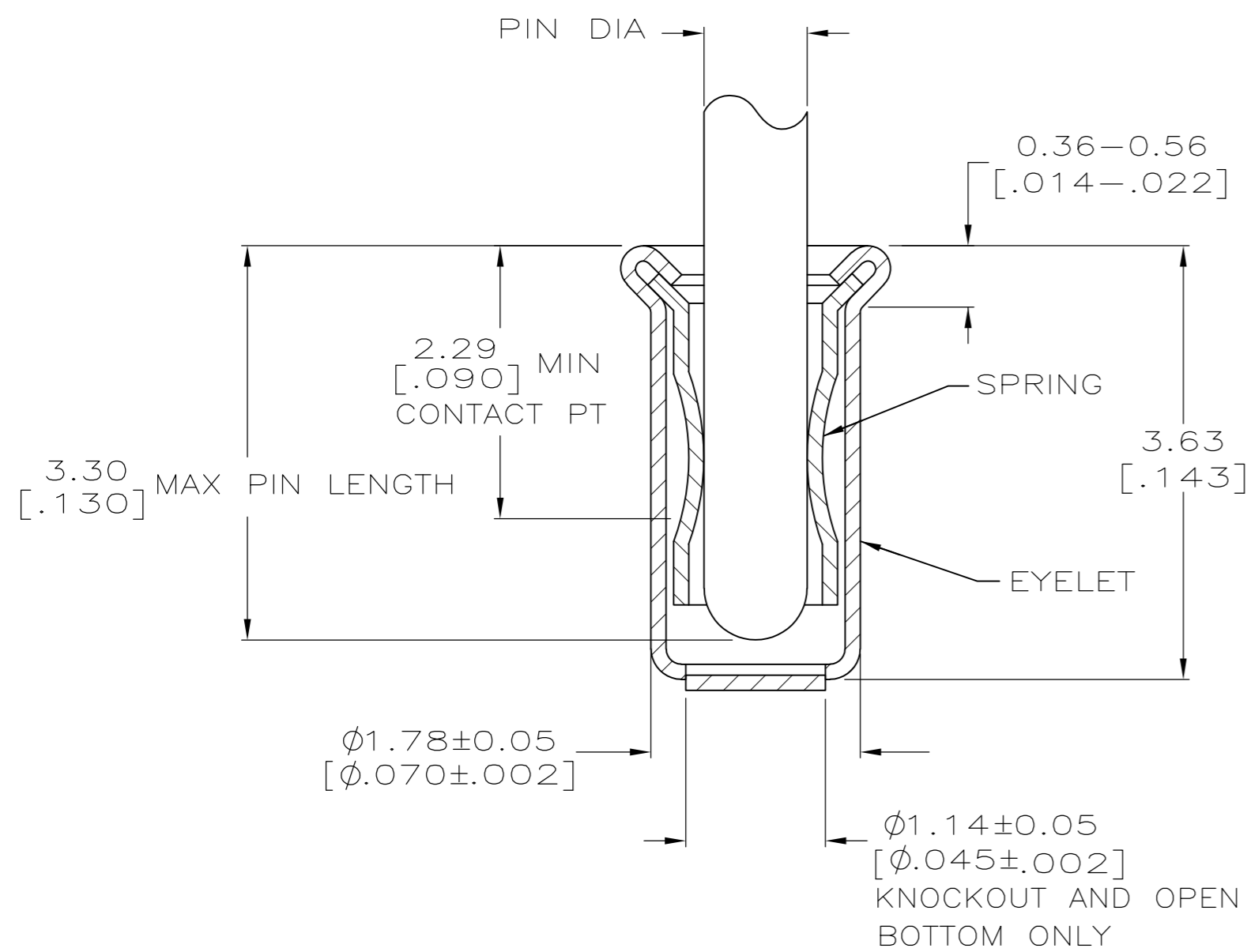
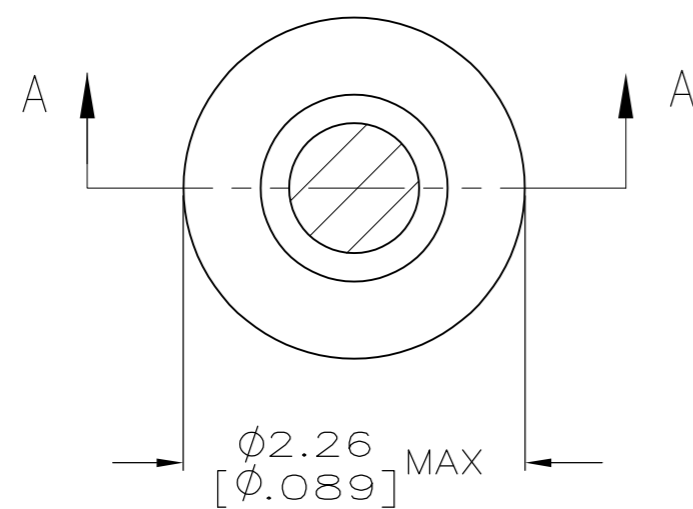


THIS DRAWING IS UNPUBLISHED. RELEASED FOR PUBLICATION
 © COPYRIGHT BY TYCO ELECTRONICS CORPORATION. ALL RIGHTS RESERVED.

LOC	DIST	REVISIONS			
P	LTR	DESCRIPTION	DATE	DWN	APVD
FT	64	A	REV PER ECO-09-026264	09MAR2010	HMR DB



SECTION A-A

- 1. TIN PLATE PER ASTM B 545 0.00254 [.000100] MIN THICK.
- 2. NICKEL UNDERPLATE ALL OVER, MATING SURFACE PLATED TO MEET PERFORMANCE REQUIREMENTS OF TYCO PRODUCT SPECIFICATION 108-14008.
- 3. RECOMMENDED HOLE SIZE, PLATED OR UNPLATED:
 MACHINE INSERTION: $1.83^{+0.10}_{-0.08}$ [$.072^{+0.004}_{-0.003}$]
 HAND INSERTION: $1.83^{+0.10}_{-0.00}$ [$.072^{+0.004}_{-0.000}$]
- 4. APPLICATION TOOL PART NUMBER: MACHINE NO. 682127-5
 INSERTION HEAD NO. 682039-4
- 5. TO INSURE PROPER SPRING TENSION DO NOT EXCEED A 0.05 [.002] DIFFERENCE IN PIN DIA WHEN CHANGING TO A SMALLER PIN.
- 6. BOTTOM PLUG KNOCKOUT TOOL PART NUMBER 69729 WITH TIP PART NUMBER 69728-2.
- 7. MATERIAL:
 SPRING: BERYLLIUM COPPER PER ASTM B 194
 EYELET: COPPER PER ASTM B 152

OBSOLETE

OPEN	0.71-0.84 [.028-.033]	TIN	1	GOLD	2	4-5332070-4
KNOCKOUT	0.94-1.02 [.037-.040]			TIN	1	3-5332070-5
OPEN	0.94-1.02 [.037-.040]	TIN	1	TIN	1	2-5332070-9
	0.86-0.94 [.034-.037]			GOLD	2	2-5332070-8
	0.76-0.84 [.030-.033]			GOLD	2	2-5332070-6
CLOSED	0.94-1.02 [.037-.040]	TIN	1	TIN	1	2-5332070-5
	0.86-0.94 [.034-.037]			GOLD	2	2-5332070-3
BOTTOM TYPE	RECOMMENDED PIN DIA	EYELET	5	SPRING		2-5332070-2
				FINISH		GOLD
						PART NO

THIS DRAWING IS A CONTROLLED DOCUMENT.		DWN	22APR2005	Tyco Electronics Corporation	
DIMENSIONS: mm [INCHES]		CHK	A. FERNANDEZ-DOCK5	Harrisburg, PA 17105-3608	
TOLERANCES UNLESS OTHERWISE SPECIFIED:		APVD	J. HAVENER	NAME	
0 PLC ± -	1 PLC ± -	PRODUCT SPEC	J. HAVENER	MINIATURE SPRING SOCKET ASSEMBLY SERIES 4	
2 PLC ± -	3 PLC ± 0.20 [.008]	APPLICATION SPEC	22APR2005	SIZE	A2
4 PLC ± -	ANGLES ± -	WEIGHT	114-13152	CAGE CODE	00779
MATERIAL	FINISH	CUSTOMER DRAWING	1	DRAWING NO	C=5332070
	SEE TABLE	SCALE	20:1	SHEET	1 of 1
		REV	A		