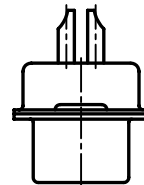
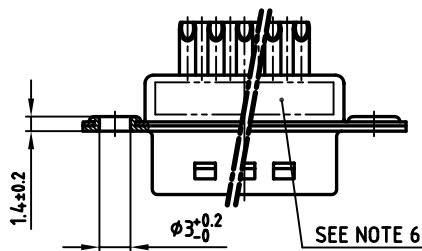
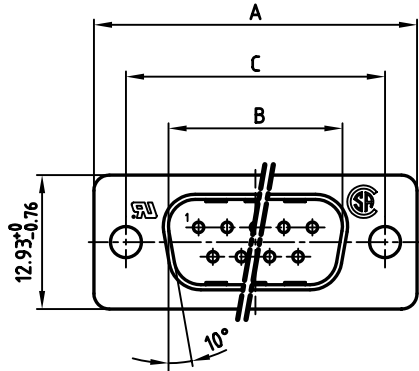
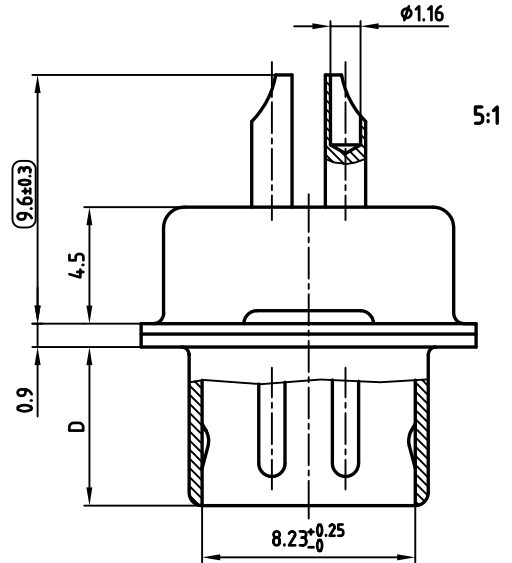


used for: D-SUB FILTER

POS.	A <sub>-0.76</sub>	B <sub>+0.25</sub>	C	D <sub>-0.3</sub>	Part NO.
9	31.19	16.79	25.00 <sup>+0.12</sup> <sub>-0.13</sub>	6.12	241A26960X
15	39.52	25.12	33.30 <sup>+0.15</sup> <sub>-0.1</sub>	6.12	241A26970X
25	53.42	38.84	47.04 <sup>+0.13</sup>	5.99	241A26980X
37	69.70	55.30	63.50 <sup>+0.13</sup>	5.99	241A26990X



**NOTES:**

- METALSHELLS: STEEL; min. 320µ" TIN
- INSULATORS: HIGH TEMPERATURE PLASTIC UL 94 V-0, BLACK
- CONTACTS: COPPER ALLOY  
PLATING: 8µ" HARD GOLD OVER min. 50µ" NICKEL  
SOLDER CUP ACCEPTS CABLE AWG 20
- CAPACITANCE: 1300pF ±20%
- DIELECTRIC WITHSTANDING VOLTAGE: 424 VDC
- CONNECTOR IS PART MARKED: [PART-NO.] [CONEC] [ABC]
- = CHECK DIMENSION

Directive 2002/95/EC  
RoHS  
Compliant

APPROVAL # FREIGABE # DEBLOCAGE # AUTORIZACION # APPROVAL	
CUSTOMER APPROVAL DATE:	
NAME:	TITLE:
COMPANY NAME:	
APPROVAL # FREIGABE # DEBLOCAGE # AUTORIZACION # APPROVAL	

THIS DRAWING MAY NOT BE COPIED OR REPRODUCED IN ANY WAY, AND MAY NOT BE PASSED ON TO A THIRD PARTY, WITHOUT WRITTEN PERMISSION. OWNERSHIP AND COPYRIGHT OF CONEC GmbH DO NOT ALTER CAD DRAWING BY HAND

rev.	description	date	name
a	Origin		

tolerance			scale:	2:1 (5:1)
			material:	SEE NOTES
2006	date	name	title:	
drawn	06.02.	Lehmenkühler	<b>D-SUB FILTER MALE</b> 9-37pos. SOLDER CUP	
appd.	06.02.	Mickenbecker		
norm	DIN 41652			
d-old		dwg no:		AutoCAD 2004
<b>CONEC</b>		part no:		24K1A761
		SEE TABLE		DIN-A 3 sh:1/1