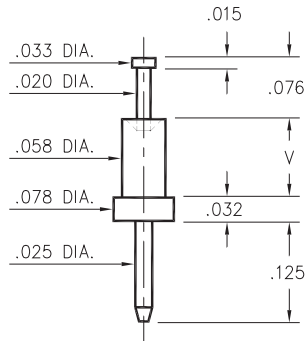


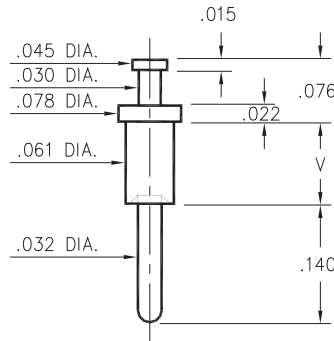
2318



- X -	Board Thickness	Length V
1	.031	.051
2	.062	.082
3	.094	.113

2318-X-00-XX-00-00-07-0
Swage mount in .062 hole

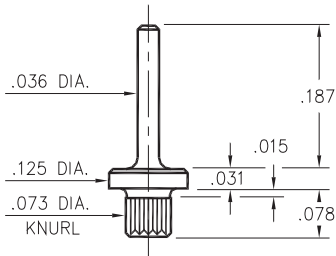
2309



- X -	Board Thickness	Length V
1	.031	.054
2	.062	.084
3	.094	.115
4	.125	.147

2309-X-00-XX-00-00-07-0
Swage mount in .064 hole

2514



2514-2-00-XX-00-00-07-0
Press-fit in .070 mounting hole

SPECIFICATIONS

PIN MATERIAL:
Brass Alloy 360, 1/2 Hard
Swage pins are annealed

DIMENSION IN INCHES
TOLERANCES ON:
LENGTHS: ±.005
DIAMETERS: ±.002
ANGLES: ± 2°

ORDER CODE: XXXX - X - 00 - XX - 00 - 00 - 07 - 0

BASIC PART #

SPECIFY PIN FINISH:

- 01 200μ" TIN/LEAD OVER NICKEL
- ◇ 80 200μ" TIN OVER NICKEL (RoHS)
- ◇ 44 300μ" SILVER OVER COPPER (RoHS)
- ◇ 50 300μ" ELECTRO-SOLDER (RoHS) (60/40 SnPb)

