

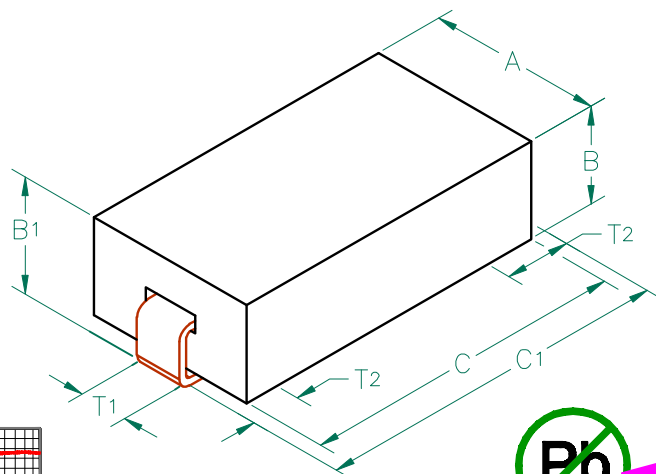
28F0181-1SR-10

PHYSICAL DIMENSIONS:

A	4.57 [.180]	± 0.08 [.003]
B	2.54 [.100]	± 0.08 [.003]
B ₁	3.05 [.120]	± MAX
C	8.51 [.335]	± 0.23 [.009]
C ₁	9.53 [.375]	± MAX

WIRE DIMENSIONS:

T ₁	1.27 [.050]	± REF.
T ₂	1.52 [.060]	± 0.51 [.020]



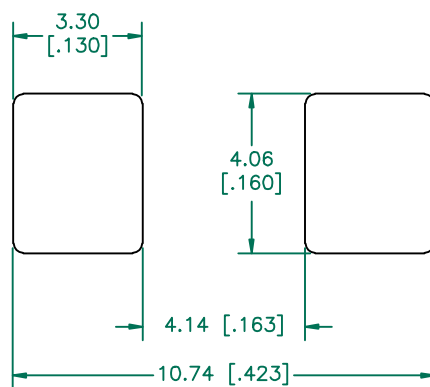
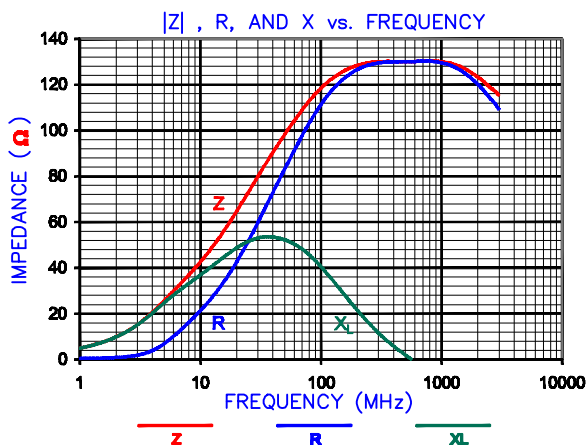
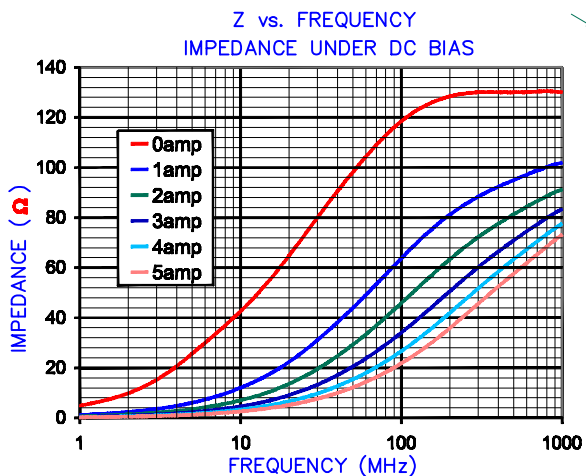
ELECTRICAL CHARACTERISTICS:

	Z (Ω) @		DCR (Ω)	Rated Current
	25MHz	100MHz		
Nominal	67	115		
Minimum	—	87		
Maximum	—	144	.001	10,000 mA

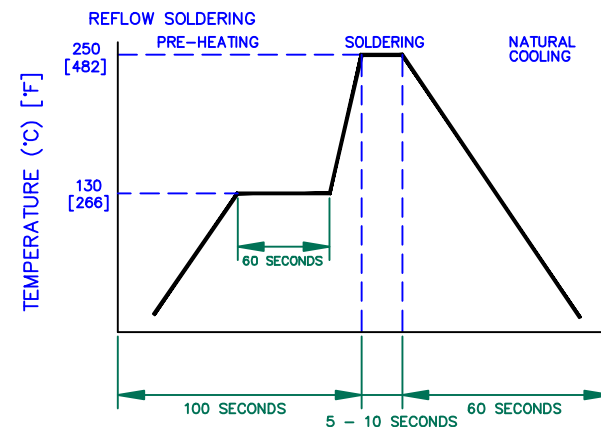
NOTES: UNLESS OTHERWISE SPECIFIED

1. TAPED AND REELED per CURRENT EIA SPECS. 13" REELS, 2,500 pcs/REEL.
2. COMPONENTS SHOULD BE ADEQUATELY PREHEATED BEFORE SOLDERING.
3. REF. CARRIER TAPE SPECIFICATION # CART181-13.
4. TERMINATION FINISH IS 100% TIN.

OBsolete
LAND PATTERNS FOR REFLOW SOLDERING



RECOMMENDED SOLDERING CONDITIONS



DIMENSIONS ARE IN mm [INCHES].				THIS DOCUMENT CONTAINS INFORMATION WHICH IS PROPRIETARY AND CONFIDENTIAL TO STEWARD. NO PRODUCTION OR PUBLICATION OF THIS DOCUMENT IN WHOLE OR IN PART SHALL BE MADE WITHOUT WRITTEN AUTHORIZATION FROM STEWARD.			
				Steward			
PROJECT/PART NUMBER:		REV	PART TYPE:	DRAWN BY:			
28F0181-1SR-10		B	ASSEMBLY	JRK			
B	CORRECT CURRENT RATING	01/12/06	JRK	DATE:	04/22/04	SCALE:	NTS
A	ORIGINAL DRAFT	04/22/04	JRK	CAD #	28F0181-1SR-10-2-B	TOOL #	H0181
REV	DESCRIPTION	DATE	INT			SHEET: 2 of 3	