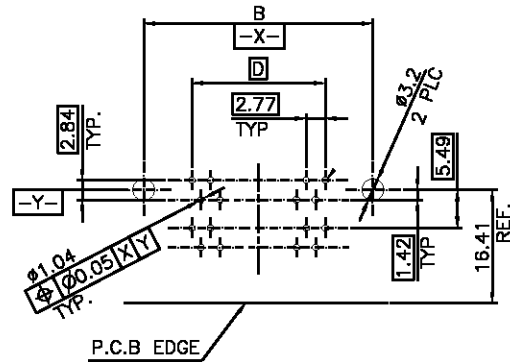
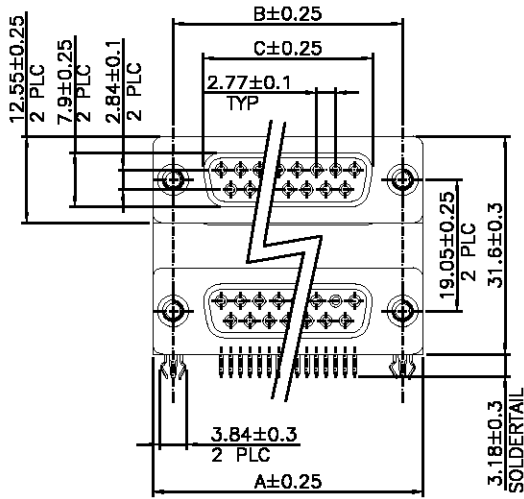


THIS DRAWING IS UNPUBLISHED. RELEASED FOR PUBLICATION AUG, 2006.
 © COPYRIGHT BY TYCO ELECTRONICS CORPORATION. ALL RIGHTS RESERVED.

LOC		DIST		REVISIONS					
DW		-		P	LTR	DESCRIPTION	DATE	DN	APVD
				A1		REVISED PER ECO-10-000444	03FEB10	KK	HMR

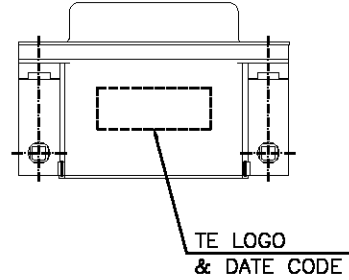
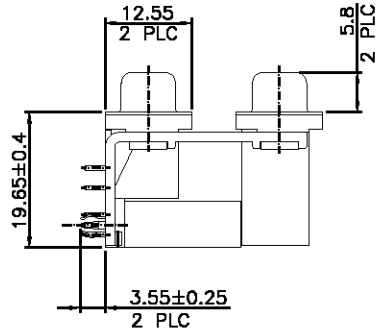
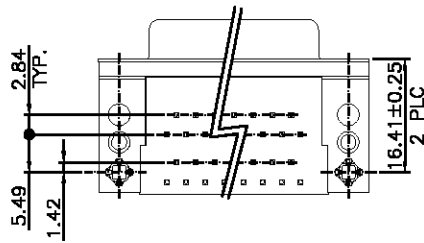


RECOMMENDED P.C.B. LAYOUT (THICKNESS: 1.2~1.6mm)
 TOLERANCE: ±0.05mm (COMPONENT SIDE)

- NOTES:
- MATERIAL:
 - HOUSING/BACK COVER: THERMOPLASTIC, UL94V-0; COLOR: SEE TABLE.
 - CONTACTS: COPPER ALLOY
 - BOARDLOCK: COPPER ALLOY
 - BRACKET: ZINC ALLOY
 - SHELL: STEEL
 - FINISH:
 - CONTACT: GOLD PLATING (SEE TABLE) ON CONTACT AREA. 2.54um [100u"] MIN. MATTE TIN PLATING ON SOLDER TAIL AREA. 1.27um [50u"] MIN. NICKEL UNDERPLATING OVERALL.
 - BOARDLOCK: 60u" MIN. TIN PLATING OVERALL.
 - SHELL: 60u" MIN. TIN PLATING OVERALL.
 - WAVE SOLDER CAPABLE TO 265°C PER TE SPEC. 109-202, CONDITION B.

*. CHOOSE PRE-FIX FROM LEFT TABLE AND SUFFIX FROM RIGHT TABLE FOR DESIRED PART NUMBER COMBINATION.

⚠️ OBSOLETE PARTS: OBSOLETE CIS STREAMLINING PER D.RENAUD/D.SINISI



X-1734285-6	30 u"	PC99/ACTUAL COLOR	37-37 NOT AVAILABLE
X-1734285-5	10 u"	PC99/ACTUAL COLOR	
X-1734285-4	GOLD FLASH	PC99/ACTUAL COLOR	
X-1734285-3	30 u"	BLACK	
X-1734285-2	10 u"	BLACK	
X-1734285-1	GOLD FLASH	BLACK	
PART NO.	GOLD PLATING	HSG COLOR	

9-1734285-X	37-37	M3 X 0.5	69.34	63.50	54.80	49.86
8-1734285-X	9-9	M3 X 0.5	30.95	24.99	16.20	11.08
3-1734285-X	37-37	#4-40 UNC	69.34	63.50	54.80	49.86
2-1734285-X	25-25	#4-40 UNC	53.10	47.04	38.30	33.24
1-1734285-X	15-15	#4-40 UNC	39.30	33.30	24.60	19.39
1734285-X	9-9	#4-40 UNC	30.95	24.99	16.20	11.08
PART NO.	PINS	THREADED INSERT	A	B	C	D

2-1734285-6	⚠️
2-1734285-5	
2-1734285-4	
1-1734285-6	
1-1734285-5	
1-1734285-4	
1-1734285-2	
1734285-6	
1734285-5	
OBSOLETE P/N	

THIS DRAWING IS A CONTROLLED DOCUMENT.

DIMENSIONS: MM	TOLERANCES UNLESS OTHERWISE SPECIFIED:
	0 PLC ± -
	1 PLC ± 0.3
	2 PLC ± 0.2
	3 PLC ± -
4 PLC ± -	
ANGLES ± 3'	
MATERIAL SEE NOTE	FINISH SEE NOTE

DWN S. CHIEN 18MAY2009 CHK S. CHIEN 18MAY2009 APVD W. KODAMA 18MAY2009 PRODUCT SPEC 108-57517 QUALIFICATION TEST REPORT 501-57590	Tyco Electronics Corporation Taipei, Taiwan NAME D-SUB STACKED CONNECTOR, RCPT OVER RCPT, THREAD INSERTS, R/A TYPE
WEIGHT SEE SHEET 3 CUSTOMER DRAWING	SIZE A3 CAGE CODE 00779 DRAWING NO C=1734285 RESTRICTED TO
SCALE =	SHEET 1 OF 3
REV A1	

THIS DRAWING IS UNPUBLISHED.

RELEASED FOR PUBLICATION

AUG, 2006.

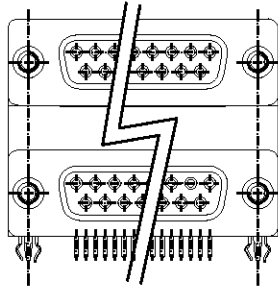
© COPYRIGHT BY TYCO ELECTRONICS CORPORATION. ALL RIGHTS RESERVED.

LOC DW

DIST

REVISIONS

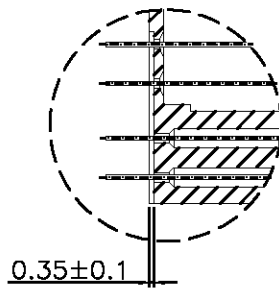
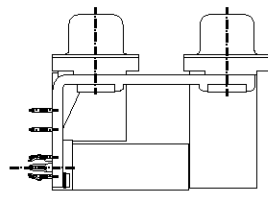
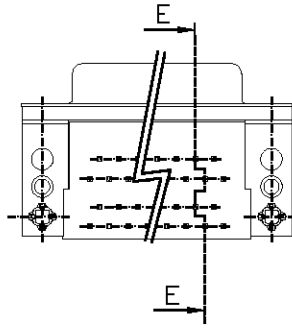
P	LTR	DESCRIPTION	DATE	DN	APVD
		SEE SHEET 1.			



PART NO.	PINS	THREADED INSERT	A	B	C	D
7-1734285-X	37-37	#4-40 UNC	69.34	63.50	54.80	49.86
6-1734285-X	25-25	#4-40 UNC	53.10	47.04	38.30	33.24
5-1734285-X	15-15	#4-40 UNC	39.30	33.30	24.60	19.39
4-1734285-X	9-9	#4-40 UNC	30.95	24.99	16.20	11.08

X-1734285-6	30 u"	PC99/ACTUAL COLOR	37-37 NOT AVAILABLE
X-1734285-5	10 u"	PC99/ACTUAL COLOR	
X-1734285-4	GOLD FLASH	PC99/ACTUAL COLOR	
X-1734285-3	30 u"	BLACK	
X-1734285-2	10 u"	BLACK	
X-1734285-1	GOLD FLASH	BLACK	
PART NO.	GOLD PLATING	HSG COLOR	

6-1734285-3 ⚠
OBSOLETE P/N



0.35±0.1

SEC. E-E

THIS DRAWING IS A CONTROLLED DOCUMENT.		DN	Tyco Electronics Corporation Taipei, Taiwan	
DIMENSIONS: MM		CHK	NAME	
TOLERANCES UNLESS OTHERWISE SPECIFIED:		APVD	D-SUB STACKED CONNECTOR, RCPT OVER RCPT, THREAD INSERTS, R/A TYPE	
<ul style="list-style-type: none"> 0 PLC ± - 1 PLC ± 0.3 2 PLC ± 0.2 3 PLC ± - 4 PLC ANGLES ± 3° 		PRODUCT SPEC	SIZE	RESTRICTED TO
MATERIAL SEE NOTE		QUALIFICATION TEST REPORT	CAGE CODE	
FINISH SEE NOTE		WEIGHT	DRAWING NO	
		CUSTOMER DRAWING	A300779	1734285
		SCALE	SHEET	REV
			2 OF 3	A1

LOC DW

DIST

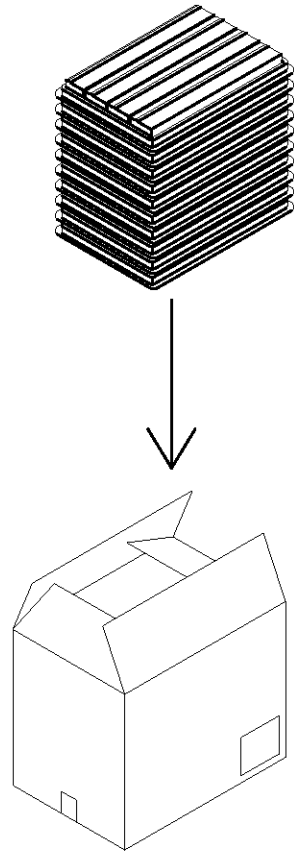
REVISIONS

P	LTR	DESCRIPTION	DATE	DN	APVD
		SEE SHEET 1.			

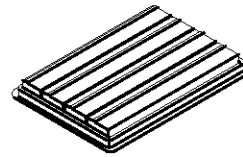
NOTE :

- DIMENSION :
 TRAY : L=310, W=215, H=30
 CARTON : L=335, W=230, H=280
- TRAY : PS or PET
- QUANTITY:

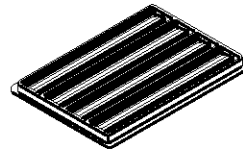
PIN NO.	9-9	15-15	25-25	37-37
PCS/TRAY	36	28	20	16
TRAY/CARTON	10	10	10	10
PCS/CARTON	360	280	200	160
NET WEIGHT	10.12	9.73	9.53	10.10
GROSS WEIGHT	11.55	11.16	11.01	11.53



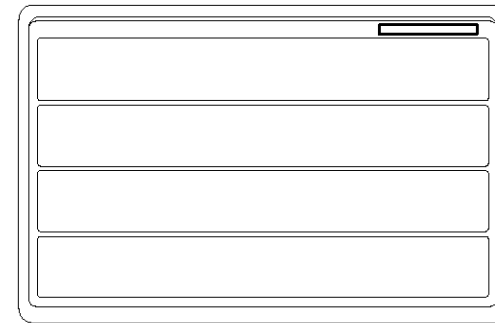
CARTON



TOP COVER



TRAY



TRAY LAYOUT

THIS DRAWING IS A CONTROLLED DOCUMENT.		DN	Tyco Electronics Corporation Taipei, Taiwan													
DIMENSIONS: MM		CHK	NAME													
TOLERANCES UNLESS OTHERWISE SPECIFIED:		APVD	D-SUB STACKED CONNECTOR, RCPT OVER RCPT, THREAD INSERTS, R/A TYPE													
<table border="0"> <tr><td>0 PLC</td><td>± -</td></tr> <tr><td>1 PLC</td><td>± 0.3</td></tr> <tr><td>2 PLC</td><td>± 0.2</td></tr> <tr><td>3 PLC</td><td>± -</td></tr> <tr><td>4 PLC</td><td>± -</td></tr> <tr><td>ANGLES</td><td>± 3°</td></tr> </table>		0 PLC	± -	1 PLC	± 0.3	2 PLC	± 0.2	3 PLC	± -	4 PLC	± -	ANGLES	± 3°	PRODUCT SPEC	SIZE	
0 PLC	± -															
1 PLC	± 0.3															
2 PLC	± 0.2															
3 PLC	± -															
4 PLC	± -															
ANGLES	± 3°															
MATERIAL SEE NOTE		QUALIFICATION TEST REPORT	CAGE CODE	DRAWING NO												
FINISH SEE NOTE		WEIGHT	A300779	C=1734285												
		CUSTOMER DRAWING	RESTRICTED TO													
		SCALE	SHEET	REV												
			3 OF 3	A1												