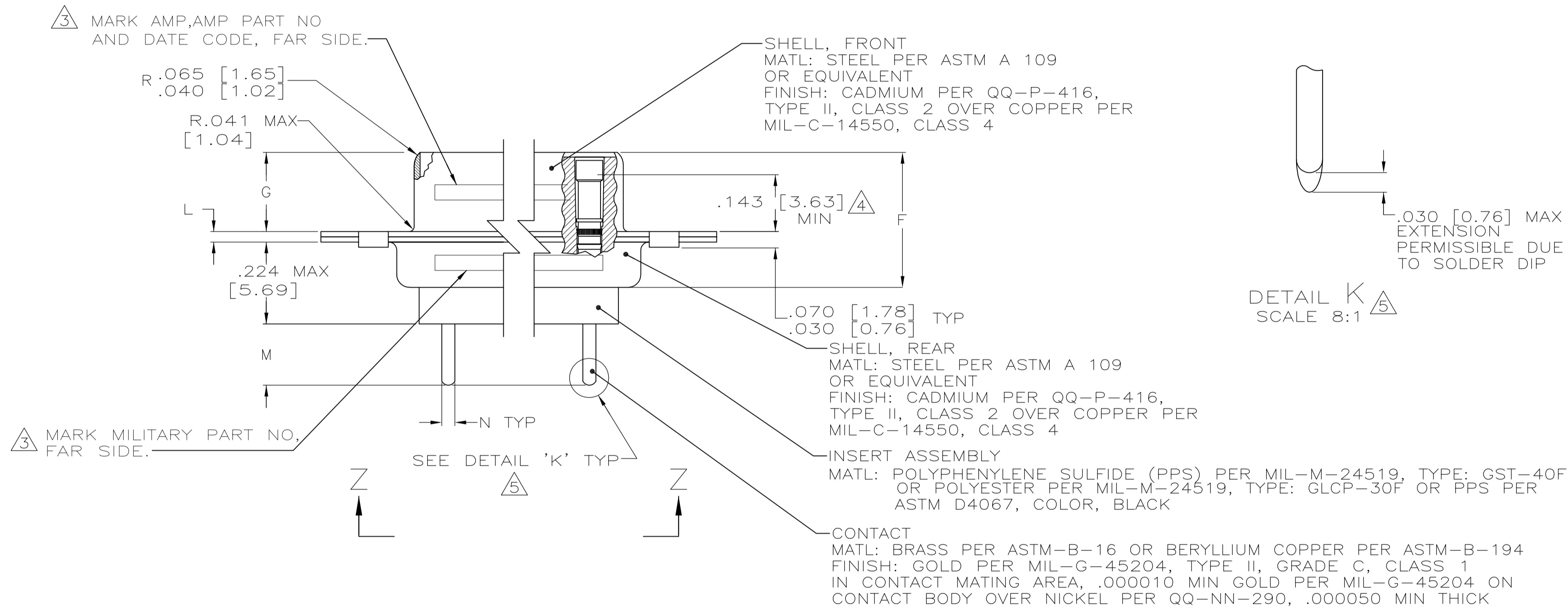


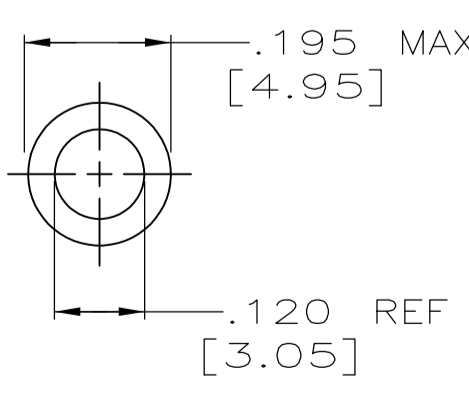
VIEW Z-Z

- SEE SHEET 2 FOR RECOMMENDED P.C. BOARD LAYOUT. TRUE POSITION TOLERANCE FOR P.C. BOARD LAYOUT IS .010 [0.25] AT MAX MATERIAL CONDITION. SUGGESTED BOARD THICKNESS IS .125 [3.18]
- THE CONNECTORS DESCRIBED IN THIS DOCUMENT MEET THE REQUIREMENTS OF MIL-C-24308 AND MATE WITH ANY PLUG CONNECTOR WITH SAME INSERT ARRANGEMENT.
- MARK WITH .047 [1.19]-.062 [1.57] HIGH CHARACTERS. FAR SIDE REFERS TO THE WIDE SIDE OF THE KEYSTONE. NEAR SIDE REFERS TO THE NARROW SIDE OF THE KEYSTONE. IF THE REAR SHELL IS TOO SMALL FOR THE ENTIRE MILITARY PART NUMBER, MARKING SHALL BE LOCATED AS FOLLOWS:
 - "M24308" ON FRONT SHELL, FAR SIDE.
 - SLASH SHEET AND DASH NUMBER ON REAR SHELL, FAR SIDE.
 - "AMP" AND DATE CODE ON FRONT SHELL, NEAR SIDE.
 - AMP PART NUMBER ON REAR SHELL, NEAR SIDE.
 IF THE FRONT SHELL IS TOO SMALL FOR "AMP", AMP PART NUMBER AND DATE CODE, THEN SPLIT AS FOLLOWS:
 - AMP PART NUMBER ON REAR SHELL, NEAR SIDE.
 - "AMP" AND DATE CODE ON FRONT SHELL, NEAR SIDE.
 - MILITARY PART NUMBER ON REAR SHELL, FAR SIDE.



- POINT OF ELECTRICAL ENGAGEMENT - AS MEASURED WITH A .0390 [0.991]-.0393 [0.998] DIA SQUARE ENDED TEST PIN.
- SOLDER DIP PER MIL-STD-2000 COMPOSITION Sn63 CONFORMING TO QQ-S-571. COVERAGE SHALL BE COMPLETE TO A DISTANCE .020 [0.51] MAX FROM INSERT ASSEMBLY.
- THE SOLDER DIP PROCESS IS PERFORMED SUBSEQUENT TO THE COMPLETION OF PRODUCTION OF THE MILITARY QUALIFIED CONNECTOR. DIMENSIONS APPLY PRIOR TO SOLDER DIPPING.
- SPACERS (QTY 2) ARE SUPPLIED WITH CONNECTORS (NOT ATTACHED TO THE CONNECTOR).
- DIMENSIONS AND TOLERANCES PER ANSI Y14.5M-1982.
- THIS DRAWING SHALL BE INTERPRETED IN ACCORDANCE WITH APPLICABLE STANDARDS LISTED IN MIL-STD-100.

.033 [0.84] .027 [0.69]	.176 [4.47] .136 [3.45]	.040 [1.02] .020 [0.51]	.544 [13.82] .524 [13.31]	2.188 [55.58] 2.168 [55.07]	.248 [6.30] .238 [6.05]	.439 [11.15] .419 [10.64]	.620 [15.75] .590 [14.99]	.428 [10.87] .418 [10.62]	2.411 [61.24] 2.401 [60.99]	2.069 [52.55] 2.059 [52.30]	2.650 [67.31] 2.620 [66.55]	MS18277-1	50	5	M24308/23-5F	443975-5	1-443975-0
			2.282 [57.96] 2.262 [57.45]	2.505 [63.63] 2.495 [63.37]			2.164 [54.97] 2.154 [54.71]	2.744 [69.70] 2.714 [68.94]	MS18276-1	37	4	M24308/23-4F	443975-4	443975-9			
.432 [10.97] .412 [10.46]	1.635 [41.53] 1.615 [41.02]	1.093 [27.76] 1.073 [27.25]	.749 [19.02]	.769 [19.53] .749 [19.02]	.248 [6.30] .238 [6.05]	.439 [11.15] .419 [10.64]	.509 [12.93] .479 [12.17]	.316 [8.03] .306 [7.77]	1.857 [47.17] 1.847 [46.91]	1.516 [38.51] 1.506 [38.25]	2.103 [53.42] 2.073 [52.65]	MS18275-1	25	3	M24308/23-3F	443975-3	443975-8
							1.317 [33.45] 1.307 [33.20]	.976 [24.79] .966 [24.54]	1.556 [39.52] 1.526 [38.76]	MS18274-1	15	2	M24308/23-2F	443975-2	443975-7		
.033 [0.84] .027 [0.69]	.176 [4.47] .136 [3.45]	.040 [1.02] .020 [0.51]	.544 [13.82] .524 [13.31]	2.188 [55.58] 2.168 [55.07]	.248 [6.30] .238 [6.05]	.439 [11.15] .419 [10.64]	.620 [15.75] .590 [14.99]	.428 [10.87] .418 [10.62]	2.411 [61.24] 2.401 [60.99]	2.069 [52.55] 2.059 [52.30]	2.650 [67.31] 2.620 [66.55]	MS18277-1	50	5	M24308/23-5F	443975-5	443975-5
			2.282 [57.96] 2.262 [57.45]	2.505 [63.63] 2.495 [63.37]			2.164 [54.97] 2.154 [54.71]	2.744 [69.70] 2.714 [68.94]	MS18276-1	37	4	M24308/23-4F	443975-4	443975-4			
.432 [10.97] .412 [10.46]	1.635 [41.53] 1.615 [41.02]	1.093 [27.76] 1.073 [27.25]	.749 [19.02]	.769 [19.53] .749 [19.02]	.248 [6.30] .238 [6.05]	.439 [11.15] .419 [10.64]	.509 [12.93] .479 [12.17]	.316 [8.03] .306 [7.77]	1.857 [47.17] 1.847 [46.91]	1.516 [38.51] 1.506 [38.25]	2.103 [53.42] 2.073 [52.65]	MS18275-1	25	3	M24308/23-3F	443975-3	443975-3
							1.317 [33.45] 1.307 [33.20]	.976 [24.79] .966 [24.54]	1.556 [39.52] 1.526 [38.76]	MS18274-1	15	2	M24308/23-2F	443975-2	443975-2		
.033 [0.84] .027 [0.69]	.176 [4.47] .136 [3.45]	.040 [1.02] .020 [0.51]	.544 [13.82] .524 [13.31]	2.188 [55.58] 2.168 [55.07]	.248 [6.30] .238 [6.05]	.439 [11.15] .419 [10.64]	.620 [15.75] .590 [14.99]	.428 [10.87] .418 [10.62]	2.411 [61.24] 2.401 [60.99]	2.069 [52.55] 2.059 [52.30]	2.650 [67.31] 2.620 [66.55]	MS18277-1	50	5	M24308/23-5F	443975-5	443975-1
			2.282 [57.96] 2.262 [57.45]	2.505 [63.63] 2.495 [63.37]			2.164 [54.97] 2.154 [54.71]	2.744 [69.70] 2.714 [68.94]	MS18276-1	37	4	M24308/23-4F	443975-4	443975-1			
.432 [10.97] .412 [10.46]	1.635 [41.53] 1.615 [41.02]	1.093 [27.76] 1.073 [27.25]	.749 [19.02]	.769 [19.53] .749 [19.02]	.248 [6.30] .238 [6.05]	.439 [11.15] .419 [10.64]	.509 [12.93] .479 [12.17]	.316 [8.03] .306 [7.77]	1.857 [47.17] 1.847 [46.91]	1.516 [38.51] 1.506 [38.25]	2.103 [53.42] 2.073 [52.65]	MS18275-1	25	3	M24308/23-3F	443975-3	443975-1
							1.317 [33.45] 1.307 [33.20]	.976 [24.79] .966 [24.54]	1.556 [39.52] 1.526 [38.76]	MS18274-1	15	2	M24308/23-2F	443975-2	443975-1		



SPACER
 MATL: ALUMINUM ALLOY PER ASTM B 211
 FINISH: IRIDITE PER MIL-C-5541, CLASS 3, COLOR GOLD

THIS DRAWING IS A CONTROLLED DOCUMENT.

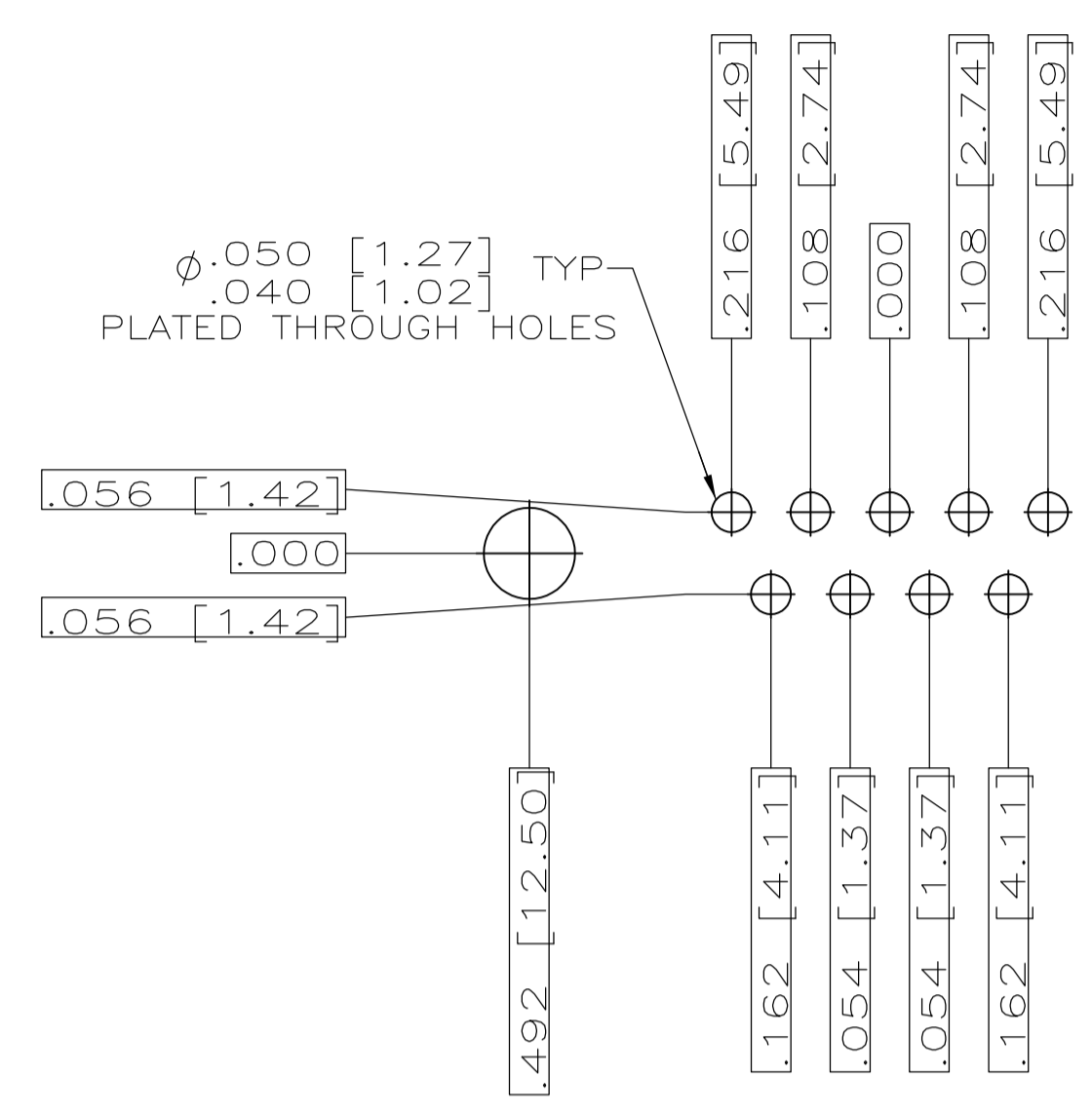
DIMENSIONS: INCHES	TOLERANCES UNLESS OTHERWISE SPECIFIED:	0 PLC ± -	1 PLC ± -	2 PLC ± -	3 PLC ± -	4 PLC ± -	ANGLES ± 1'
--------------------	--	-----------	-----------	-----------	-----------	-----------	-------------

MATERIAL: SEE CALLOUTS
 FINISH: SEE CALLOUTS

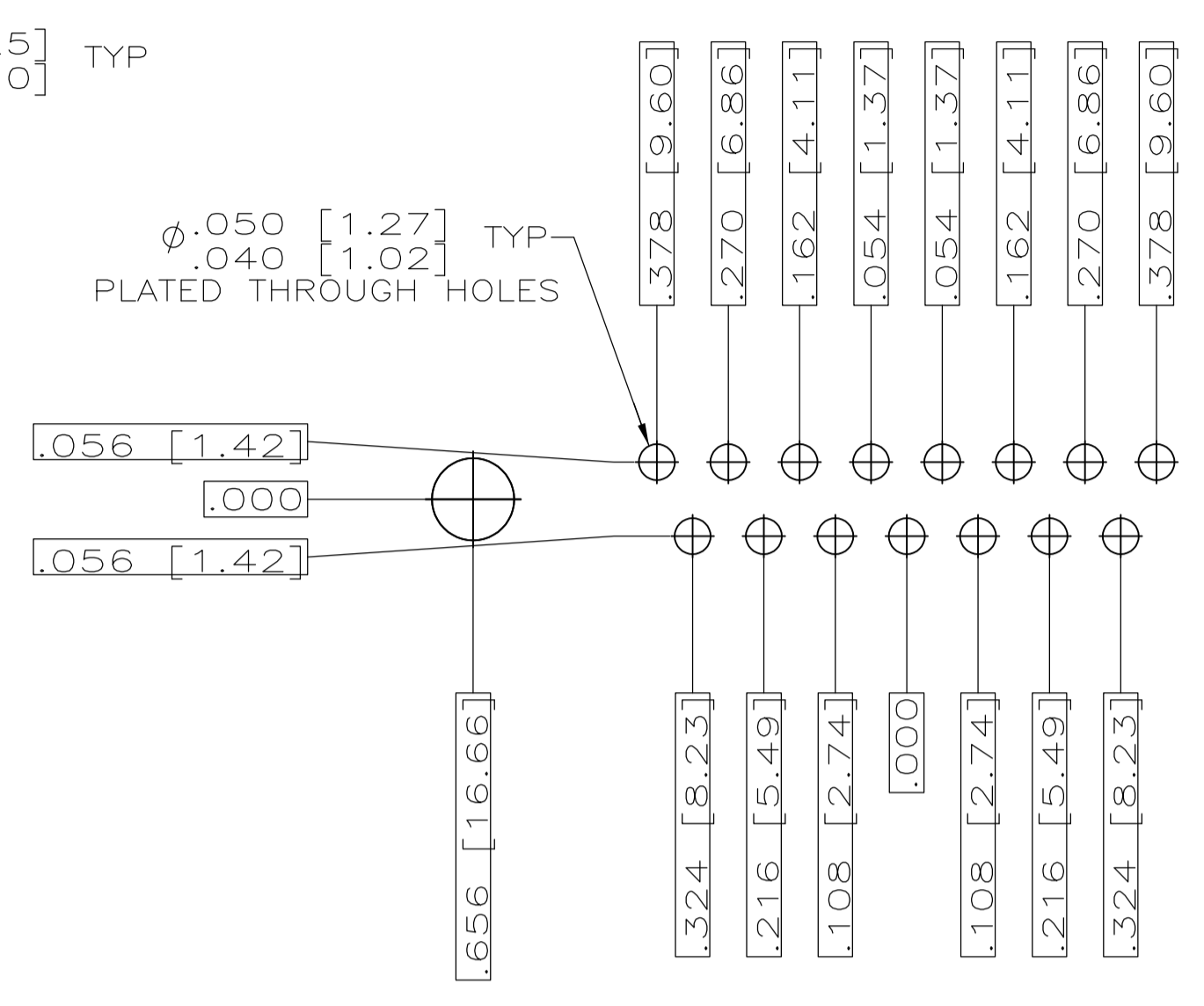
WEIGHT: -
 SIZE: A1
 CAGE CODE: 00779
 DRAWING NO: 443975
 RESTRICTED TO: -

CUSTOMER DRAWING
 SCALE: 4:1
 SHEET: 1 OF 2
 REV: D

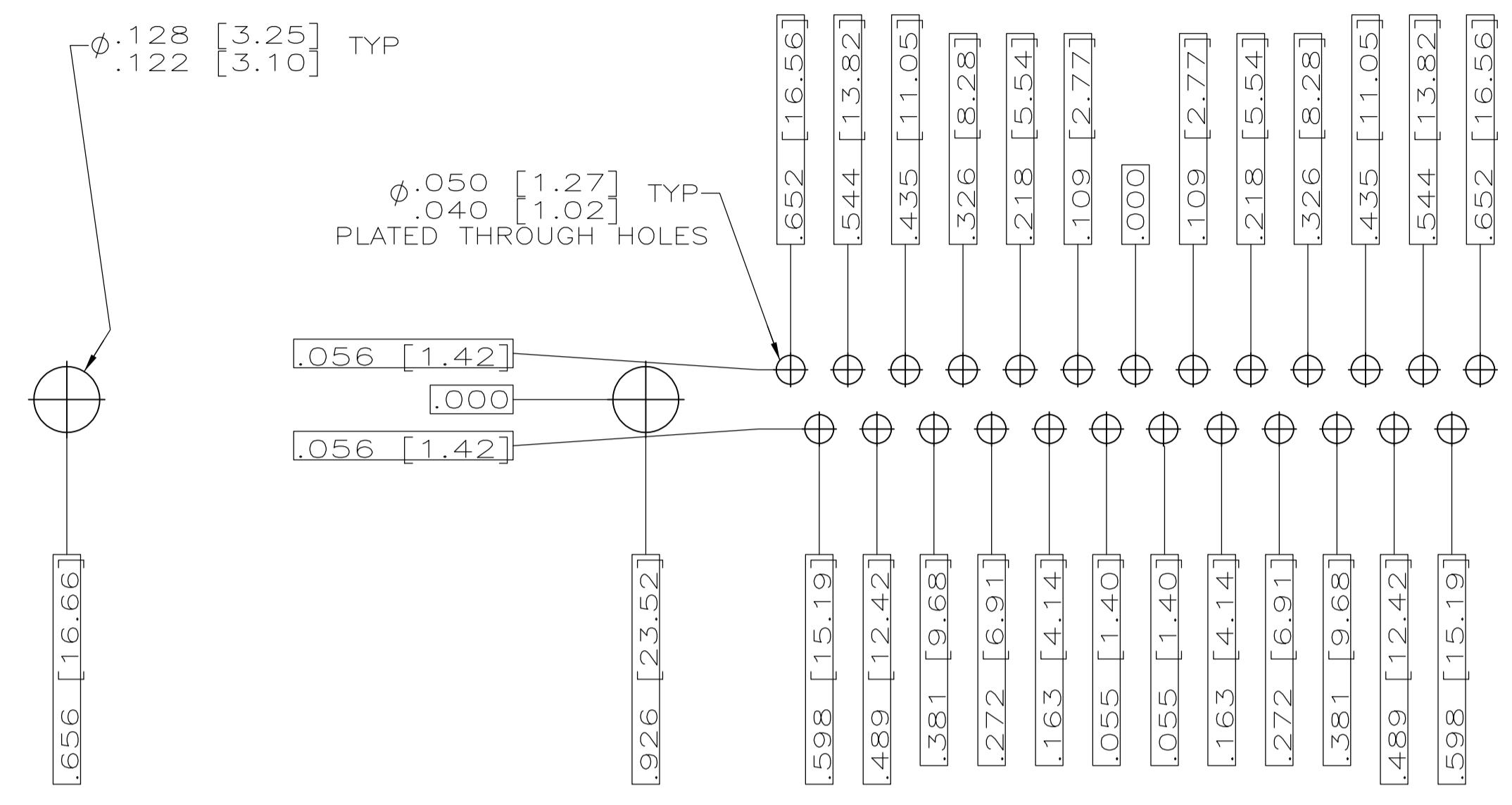
THIS DRAWING IS A CONTROLLED DOCUMENT.
 DWN: J.A. BAKER
 CHK: G. OVER
 APVD: G. OVER
 Tyco Electronics
 Tyco Electronics Corporation
 Harrisburg, PA 17105-3608
 NAME: AMPLIMITE RECEPTACLE ASSY
 W/ SIZE 20 POSTED PC BOARD CONTACTS
 SERIES 109, SIZES 1 THRU 5



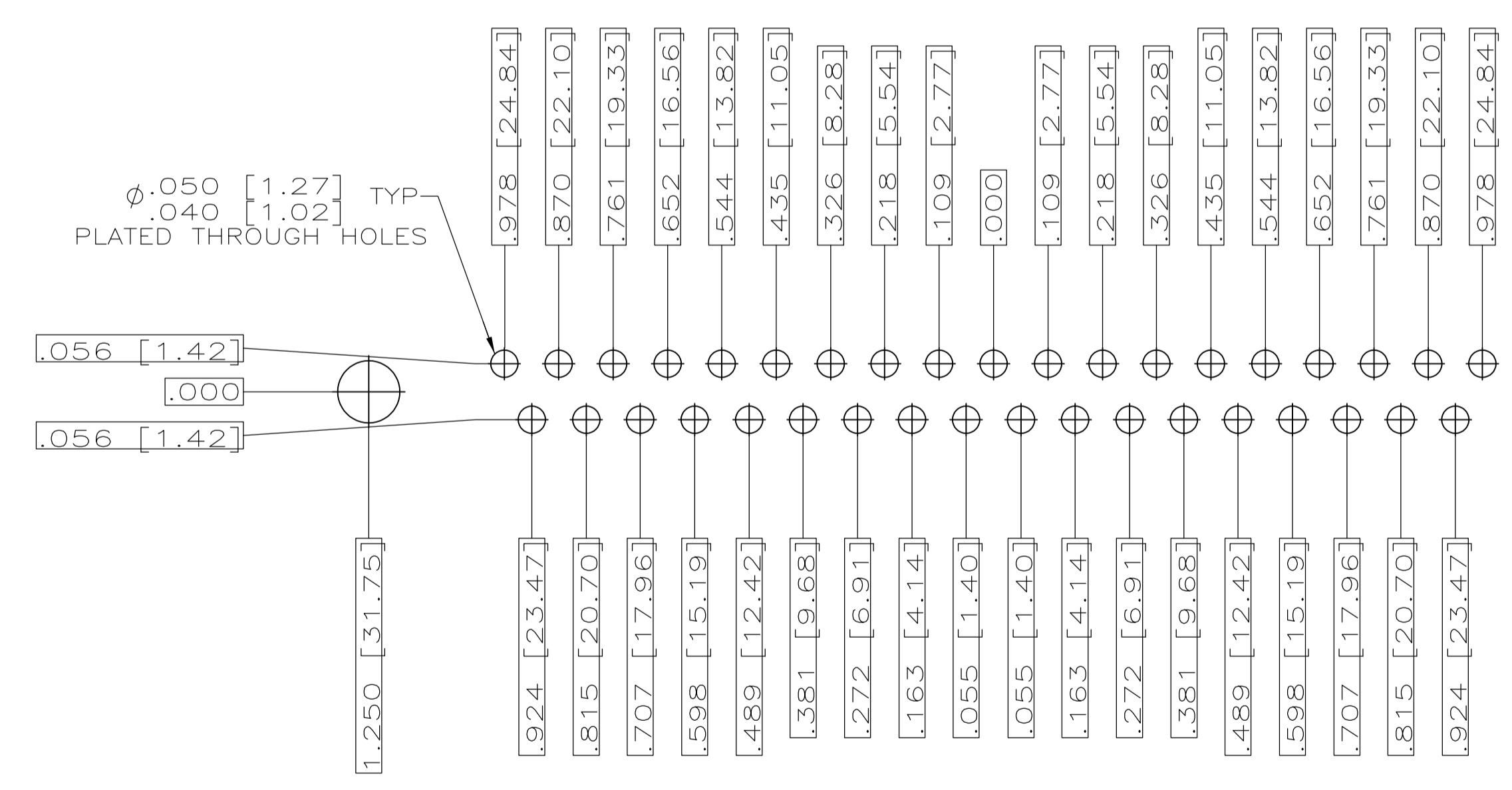
RECOMMENDED P.C. BOARD LAYOUT
SHELL SIZE 1 (9 POSITION) Δ



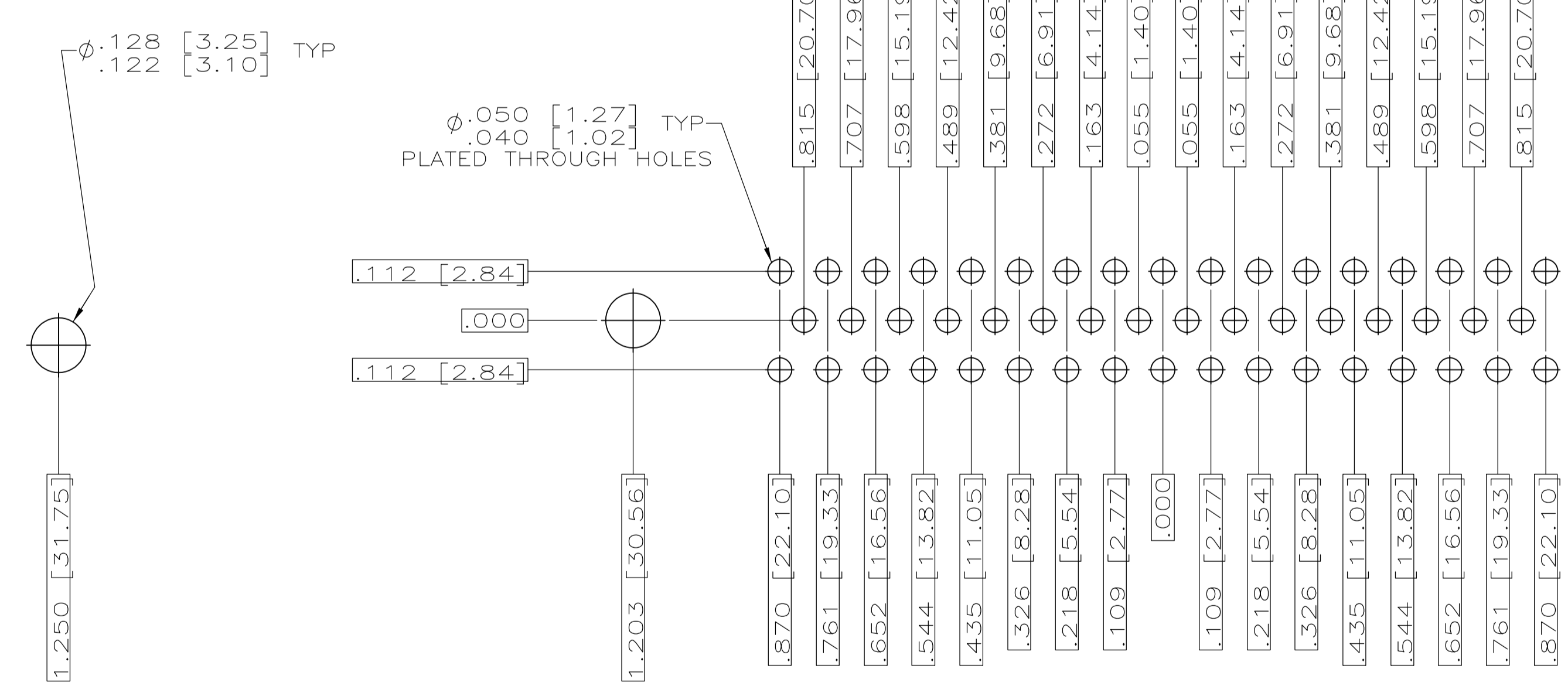
RECOMMENDED P.C. BOARD LAYOUT
SHELL SIZE 2 (15 POSITION) Δ



RECOMMENDED P.C. BOARD LAYOUT
SHELL SIZE 3 (25 POSITION) Δ



RECOMMENDED P.C. BOARD LAYOUT
SHELL SIZE 4 (37 POSITION) Δ



RECOMMENDED P.C. BOARD LAYOUT
SHELL SIZE 5 (50 POSITION) Δ

THIS DRAWING IS A CONTROLLED DOCUMENT.		DWN J.A. Baker	05MAY97	Tyco Electronics Corporation Harrisburg, PA 17105-3608																																																																																																						
DIMENSIONS: INCHES		CHK G. OVER	15MAY98																																																																																																							
TOLERANCES UNLESS OTHERWISE SPECIFIED:		NAME																																																																																																								
<table border="1"> <tr><td>0 PL</td><td>± .005</td></tr> <tr><td>1 PL</td><td>± .005</td></tr> <tr><td>2 PL</td><td>± .005</td></tr> <tr><td>3 PL</td><td>± .005</td></tr> <tr><td>4 PL</td><td>± .005</td></tr> <tr><td>5 PL</td><td>± .005</td></tr> <tr><td>6 PL</td><td>± .005</td></tr> <tr><td>7 PL</td><td>± .005</td></tr> <tr><td>8 PL</td><td>± .005</td></tr> <tr><td>9 PL</td><td>± .005</td></tr> <tr><td>10 PL</td><td>± .005</td></tr> <tr><td>11 PL</td><td>± .005</td></tr> <tr><td>12 PL</td><td>± .005</td></tr> <tr><td>13 PL</td><td>± .005</td></tr> <tr><td>14 PL</td><td>± .005</td></tr> <tr><td>15 PL</td><td>± .005</td></tr> <tr><td>16 PL</td><td>± .005</td></tr> <tr><td>17 PL</td><td>± .005</td></tr> <tr><td>18 PL</td><td>± .005</td></tr> <tr><td>19 PL</td><td>± .005</td></tr> <tr><td>20 PL</td><td>± .005</td></tr> <tr><td>21 PL</td><td>± .005</td></tr> <tr><td>22 PL</td><td>± .005</td></tr> <tr><td>23 PL</td><td>± .005</td></tr> <tr><td>24 PL</td><td>± .005</td></tr> <tr><td>25 PL</td><td>± .005</td></tr> <tr><td>26 PL</td><td>± .005</td></tr> <tr><td>27 PL</td><td>± .005</td></tr> <tr><td>28 PL</td><td>± .005</td></tr> <tr><td>29 PL</td><td>± .005</td></tr> <tr><td>30 PL</td><td>± .005</td></tr> <tr><td>31 PL</td><td>± .005</td></tr> <tr><td>32 PL</td><td>± .005</td></tr> <tr><td>33 PL</td><td>± .005</td></tr> <tr><td>34 PL</td><td>± .005</td></tr> <tr><td>35 PL</td><td>± .005</td></tr> <tr><td>36 PL</td><td>± .005</td></tr> <tr><td>37 PL</td><td>± .005</td></tr> <tr><td>38 PL</td><td>± .005</td></tr> <tr><td>39 PL</td><td>± .005</td></tr> <tr><td>40 PL</td><td>± .005</td></tr> <tr><td>41 PL</td><td>± .005</td></tr> <tr><td>42 PL</td><td>± .005</td></tr> <tr><td>43 PL</td><td>± .005</td></tr> <tr><td>44 PL</td><td>± .005</td></tr> <tr><td>45 PL</td><td>± .005</td></tr> <tr><td>46 PL</td><td>± .005</td></tr> <tr><td>47 PL</td><td>± .005</td></tr> <tr><td>48 PL</td><td>± .005</td></tr> <tr><td>49 PL</td><td>± .005</td></tr> <tr><td>50 PL</td><td>± .005</td></tr> </table>		0 PL	± .005	1 PL	± .005	2 PL	± .005	3 PL	± .005	4 PL	± .005	5 PL	± .005	6 PL	± .005	7 PL	± .005	8 PL	± .005	9 PL	± .005	10 PL	± .005	11 PL	± .005	12 PL	± .005	13 PL	± .005	14 PL	± .005	15 PL	± .005	16 PL	± .005	17 PL	± .005	18 PL	± .005	19 PL	± .005	20 PL	± .005	21 PL	± .005	22 PL	± .005	23 PL	± .005	24 PL	± .005	25 PL	± .005	26 PL	± .005	27 PL	± .005	28 PL	± .005	29 PL	± .005	30 PL	± .005	31 PL	± .005	32 PL	± .005	33 PL	± .005	34 PL	± .005	35 PL	± .005	36 PL	± .005	37 PL	± .005	38 PL	± .005	39 PL	± .005	40 PL	± .005	41 PL	± .005	42 PL	± .005	43 PL	± .005	44 PL	± .005	45 PL	± .005	46 PL	± .005	47 PL	± .005	48 PL	± .005	49 PL	± .005	50 PL	± .005	PRODUCT SPEC MIL-C-24308		
0 PL	± .005																																																																																																									
1 PL	± .005																																																																																																									
2 PL	± .005																																																																																																									
3 PL	± .005																																																																																																									
4 PL	± .005																																																																																																									
5 PL	± .005																																																																																																									
6 PL	± .005																																																																																																									
7 PL	± .005																																																																																																									
8 PL	± .005																																																																																																									
9 PL	± .005																																																																																																									
10 PL	± .005																																																																																																									
11 PL	± .005																																																																																																									
12 PL	± .005																																																																																																									
13 PL	± .005																																																																																																									
14 PL	± .005																																																																																																									
15 PL	± .005																																																																																																									
16 PL	± .005																																																																																																									
17 PL	± .005																																																																																																									
18 PL	± .005																																																																																																									
19 PL	± .005																																																																																																									
20 PL	± .005																																																																																																									
21 PL	± .005																																																																																																									
22 PL	± .005																																																																																																									
23 PL	± .005																																																																																																									
24 PL	± .005																																																																																																									
25 PL	± .005																																																																																																									
26 PL	± .005																																																																																																									
27 PL	± .005																																																																																																									
28 PL	± .005																																																																																																									
29 PL	± .005																																																																																																									
30 PL	± .005																																																																																																									
31 PL	± .005																																																																																																									
32 PL	± .005																																																																																																									
33 PL	± .005																																																																																																									
34 PL	± .005																																																																																																									
35 PL	± .005																																																																																																									
36 PL	± .005																																																																																																									
37 PL	± .005																																																																																																									
38 PL	± .005																																																																																																									
39 PL	± .005																																																																																																									
40 PL	± .005																																																																																																									
41 PL	± .005																																																																																																									
42 PL	± .005																																																																																																									
43 PL	± .005																																																																																																									
44 PL	± .005																																																																																																									
45 PL	± .005																																																																																																									
46 PL	± .005																																																																																																									
47 PL	± .005																																																																																																									
48 PL	± .005																																																																																																									
49 PL	± .005																																																																																																									
50 PL	± .005																																																																																																									
MATERIAL SEE CALLOUTS		APPLICATION SPEC																																																																																																								
FINISH SEE CALLOUTS		SIZE A1																																																																																																								
WEIGHT		CAGE CODE 00779																																																																																																								
CUSTOMER DRAWING		DRAWING NO 443975																																																																																																								
SCALE 4:1		SHEET 2 OF 2																																																																																																								
REV D		RESTRICTED TO																																																																																																								