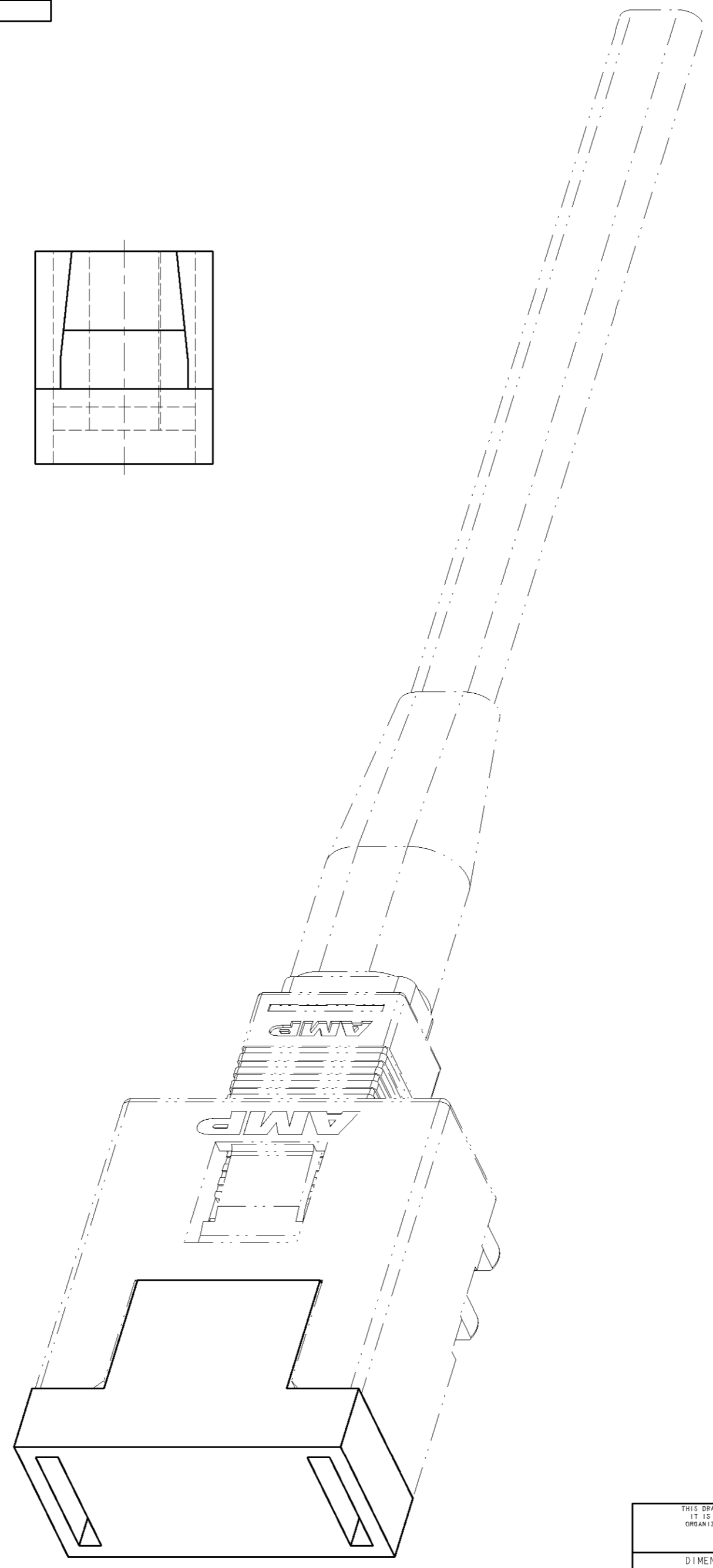
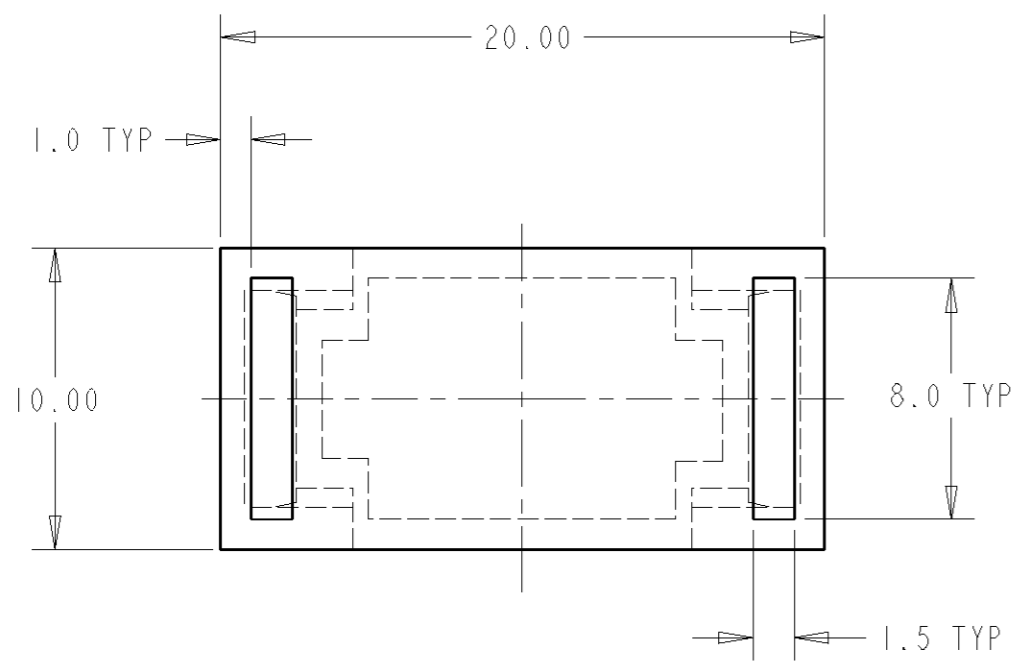
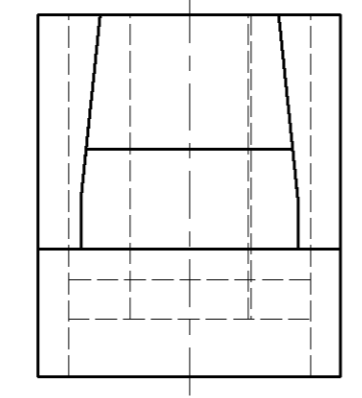
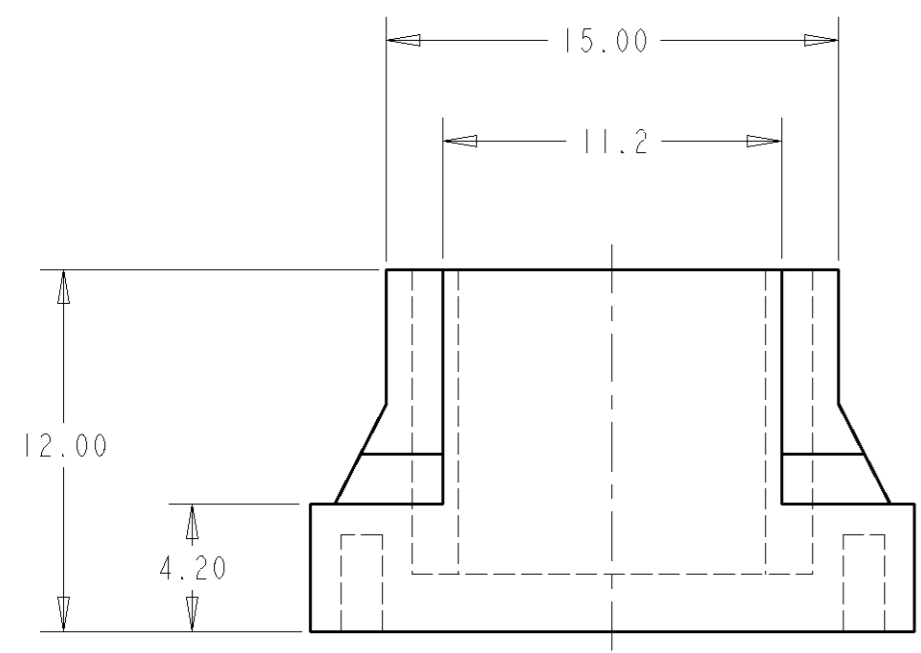


LOC	DIST	REVISIONS					
		P	LTR	DESCRIPTION	DATE	DWN	APVD
CE	16		A	REV PER EC 0A00-0572-97	19NOV97	TG	-
			B	REVISED PER ECN 0A00-0050-99	07MAY99	JDL	LAB
			B1	REV PER ECO-10-000445	11JAN10	KK	AEG



- 1 MATERIAL: THERMOPLASTIC ELASTOMER.
- 2 BULKPACKAGE 25 PIECES.
- 3. RETENTION FORCE: 1/2 LB MIN.
- 4 **OBSOLETE PARTS: OBSOLETE CIS STREAMLINING PER D.RENAUD/D.SINISI**

2	4	RED	492578-7
2	2	BLUE	492578-5
2	2	GREEN	492578-3
	2	BLACK	492578-1
		COLOR	PART NUMBER

<small>THIS DRAWING IS A CONTROLLED DOCUMENT FOR AMP INCORPORATED. IT IS SUBJECT TO CHANGE AND THE CONTROLLING ENGINEERING ORGANIZATION SHOULD BE CONTACTED FOR THE LATEST REVISION.</small>		DWN I. GREEN 17SEP97 CHK L. BARKUS 29OCT97 APVD K. MONROE 29OCT97	AMP AMP Incorporated Harrisburg, PA 17105-3608
DIMENSIONS: mm [INCHES]	TOLERANCES UNLESS OTHERWISE SPECIFIED: 0 PLC ± 1 PLC ±0.1 2 PLC ±0.01 3 PLC ±0.001 4 PLC ±0.0001 ANGLES ± FINISH -	PRODUCT SPEC - APPLICATION SPEC - WEIGHT -	NAME DAUGHTER CARD HOUSING DUST COVER SIZE A2 CAGE CODE 00779 DRAWING NO 492578
MATERIAL -		CUSTOMER DRAWING	SCALE 4:1 SHEET OF REV B1

SCALE 4:1