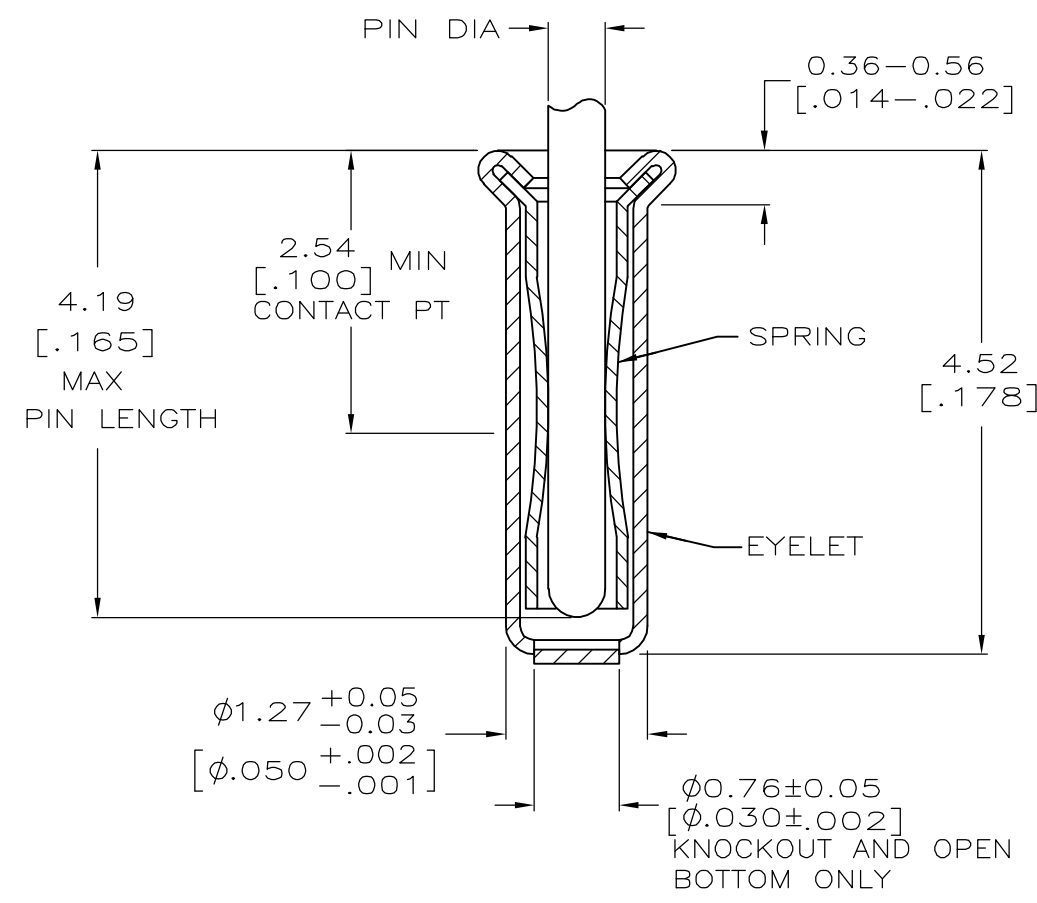
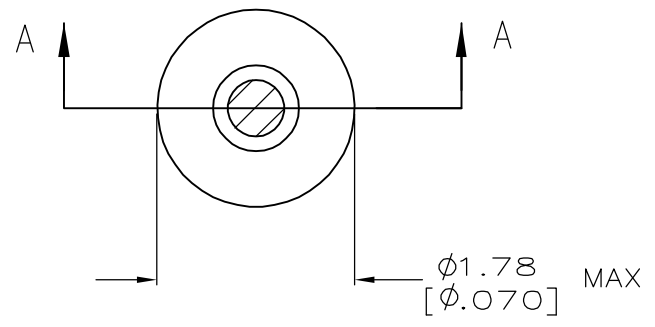


THIS DRAWING IS UNPUBLISHED. RELEASED FOR PUBLICATION

© COPYRIGHT BY TYCO ELECTRONICS CORPORATION. ALL RIGHTS RESERVED.

| LOC | DIST | REVISIONS |     |                     |           |     |      |
|-----|------|-----------|-----|---------------------|-----------|-----|------|
| GP  | 00   | P         | LTR | DESCRIPTION         | DATE      | DWN | APVD |
|     |      |           | 0   | PER EC-0S11-0022-05 | 20APR2005 | JA  | JH   |



SECTION A-A

- 1. TIN PLATE PER ASTM B 545 .000254 [.000100] MIN THICK.
- 2. GOLD PER ASTM B 488, TYPE II, 0.00076 [.000030] MIN THK OVER NICKEL PER QQ-N-290 0.00028 [.000011] MIN THK ON CONTACT AREA.
- 3. RECOMMENDED HOLE SIZE, PLATED OR UNPLATED:  
 MACHINE INSERTION: 1.32 <sup>+0.08</sup>/<sub>-0.05</sub> [.052 <sup>+0.003</sup>/<sub>-0.002</sub>]  
 HAND INSERTION: 1.32 <sup>+0.10</sup>/<sub>-0.00</sub> [.052 <sup>+0.004</sup>/<sub>-0.000</sub>]
- 4. APPLICATION TOOL PART NUMBER:  
 MACHINE NO. 682127-3  
 INSERTION HEAD NO. 682039-2
- 5. TO INSURE PROPER SPRING TENSION DO NOT EXCEED A 0.10 [.004] DIFFERENCE IN PIN DIA WHEN CHANGING TO A SMALLER PIN.
- 6. BOTTOM PLUG KNOCKOUT TOOL PART NUMBER 69729 WITH TIP PART NUMBER 69728.
- 7. MATERIAL: SPRING: BERYLLIUM COPPER PER ASTM B 194  
 EYELET: COPPER PER ASTM B 152

|                                   |                       |        |        |           |
|-----------------------------------|-----------------------|--------|--------|-----------|
| CLOSED                            | 0.36-0.66 [.014-.026] | TIN 1  | GOLD 2 | 5050462-8 |
| OPEN                              |                       |        | TIN 1  | 5050462-7 |
| BOTTOM TYPE RECOMMENDED PIN DIA 5 |                       | EYELET | GOLD 2 | 5050462-2 |
|                                   |                       |        | SPRING | PART NO   |
| FINISH                            |                       |        |        |           |

|   |                     |  |   |                    |
|---|---------------------|--|---|--------------------|
| THIS DRAWING IS A CONTROLLED DOCUMENT.  |                     | DWN<br>J. ALCORTA - DOCK5<br>20APR2005 | Tyco Electronics Corporation<br>Harrisburg, PA 17105-3608 |                    |
| DIMENSIONS:<br>mm [INCHES]  |                     | CHK<br>J. HAVENER<br>20APR2005         |   |                    |
| TOLERANCES UNLESS OTHERWISE SPECIFIED:<br>0 PLC ± -<br>1 PLC ± -<br>2 PLC ± -<br>3 PLC ± 0.20 [.008]<br>4 PLC ± -<br>ANGLES ± - |                     | APVD<br>J. HAVENER<br>20APR2005        | NAME<br>MINIATURE SPRING SOCKET ASSEMBLY SERIES 2         |                    |
|   |                     | PRODUCT SPEC<br>-                      | SIZE<br>A3  | CAGE CODE<br>00779 |
| MATERIAL<br>7   | FINISH<br>SEE TABLE | APPLICATION SPEC<br>-                  | RESTRICTED TO<br>-  | WEIGHT<br>-        |
| CUSTOMER DRAWING  |                     |  | SCALE<br>20:1   | SHEET<br>1 OF 1    |
|   |                     |  | REV<br>0  |                    |