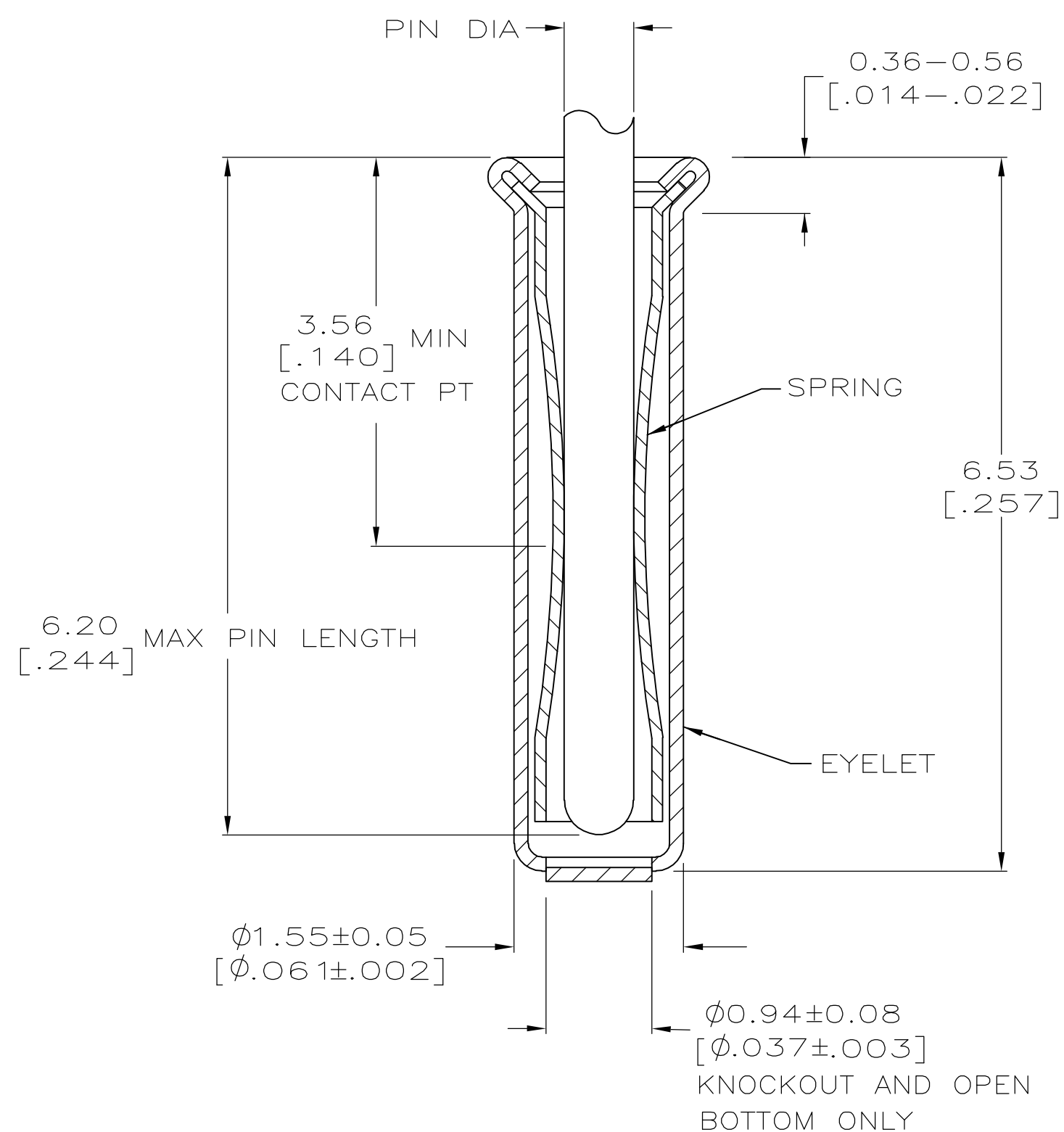
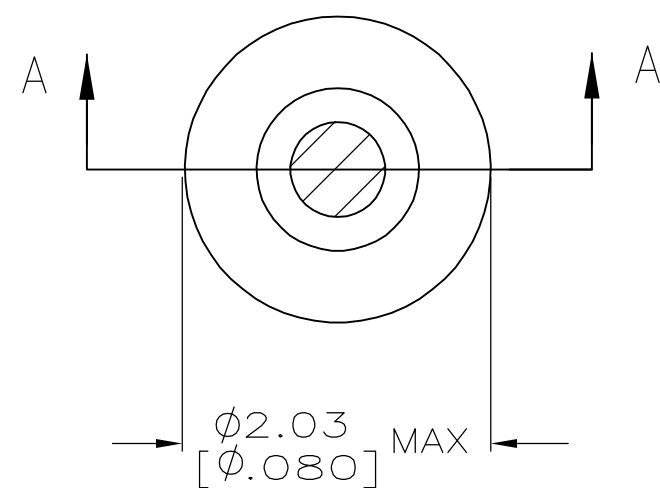


THIS DRAWING IS UNPUBLISHED. RELEASED FOR PUBLICATION  
 © COPYRIGHT BY TYCO ELECTRONICS CORPORATION. ALL RIGHTS RESERVED.

LOC	DIST	REVISIONS			
P	LTR	DESCRIPTION	DATE	DWN	APVD
0		PER EC-0S11-0022-05	04-20-05	JA	JGH



SECTION A-A

- 1. TIN PLATE PER ASTM-B-545 0.00254 [.000100] MIN THK.
- 2. GOLD PER MIL-G-45204, TYPE II, 0.00076 [.000030] MIN THK OVER NICKEL PER QQ-N-290 0.00028 [.000011] MIN THK ON CONTACT AREA.
- 3. RECOMMENDED HOLE SIZE, PLATED OR UNPLATED:  
 MACHINE INSERTION:  $1.57 \begin{matrix} +0.10 \\ -0.08 \end{matrix} \begin{matrix} [.062 +.004 \\ -.003] \end{matrix}$   
 HAND INSERTION:  $1.60 \begin{matrix} +0.10 \\ -0.00 \end{matrix} \begin{matrix} [.063 +.004 \\ -.000] \end{matrix}$
- 4. APPLICATION TOOL PART NUMBER: MACHINE NO. 682127-4  
 INSERTION HEAD NO. 682039-3
- 5. TO INSURE PROPER SPRING TENSION DO NOT EXCEED A 0.05 [.002] DIFFERENCE IN PIN DIA WHEN CHANGING TO A SMALLER PIN.
- 7. BOTTOM PLUG KNOCKOUT TOOL PART NUMBER 69729 WITH TIP PART NUMBER 69728-1.
- 5. SPRING: BERYLLIUM COPPER QQ-C-533
- 6. EYELET: COPPER QQ-C-576

OPEN	0.66-0.84 [.026-.033]	TIN	TIN	5050864-8
CLOSED		TIN	TIN	5050864-6
OPEN	0.66-0.84 [.026-.033]	GOLD	GOLD	5050864-5
CLOSED		GOLD	GOLD	5050864-1
BOTTOM TYPE	RECOMMENDED PIN DIA	EYELET	SPRING	PART NO
		FINISH		

THIS DRAWING IS A CONTROLLED DOCUMENT.		DWN J. ALCORTA - DOCK5 04-20-05	Tyco Electronics Corporation Harrisburg, Pa 17105-3608	
DIMENSIONS: mm [INCHES]		CHK J. HAVENER 04-20-05	NAME MINIATURE SPRING SOCKET ASSEMBLY SERIES 3	
TOLERANCES UNLESS OTHERWISE SPECIFIED: 0 PLC ± - 1 PLC ± - 2 PLC ± - 3 PLC ± 0.20 [.008] 4 PLC ± - ANGLES ± -		APVD J. HAVENER 04-20-05	PRODUCT SPEC 108-14008	
MATERIAL 5/6		FINISH SEE TABLE	APPLICATION SPEC 114-26000	RESTRICTED TO
		WEIGHT -	SIZE A2	CAGE CODE 00779
		CUSTOMER DRAWING	DRAWING NO C=5050864	SCALE 20:1
			SHEET 1	OF 1
			REV 0	