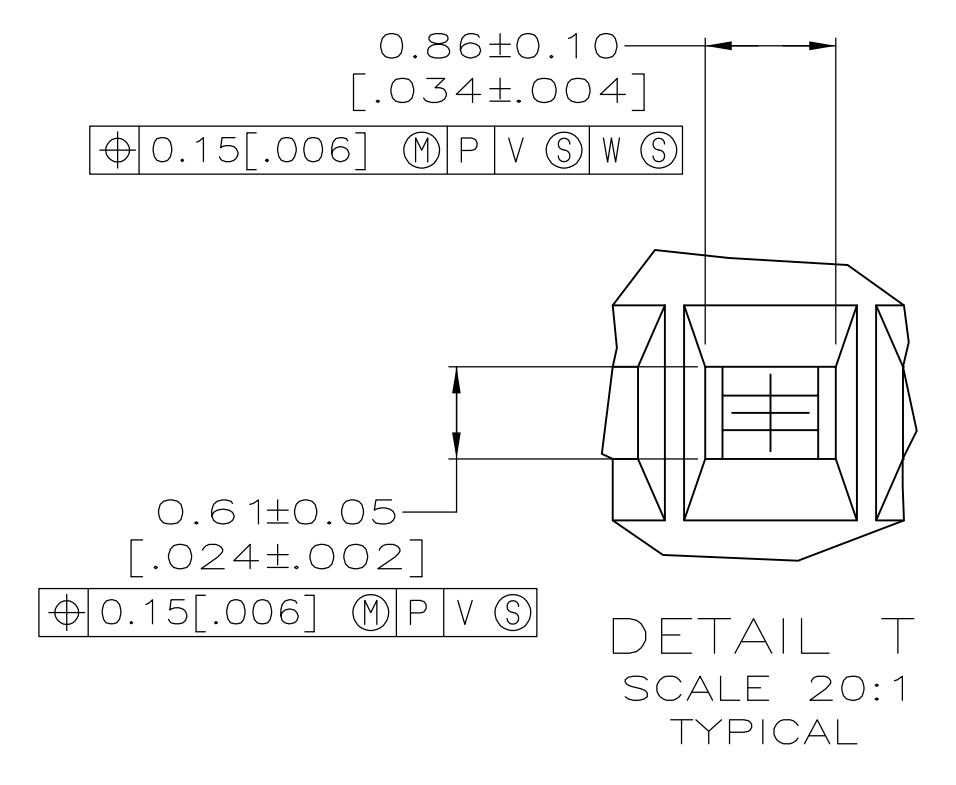
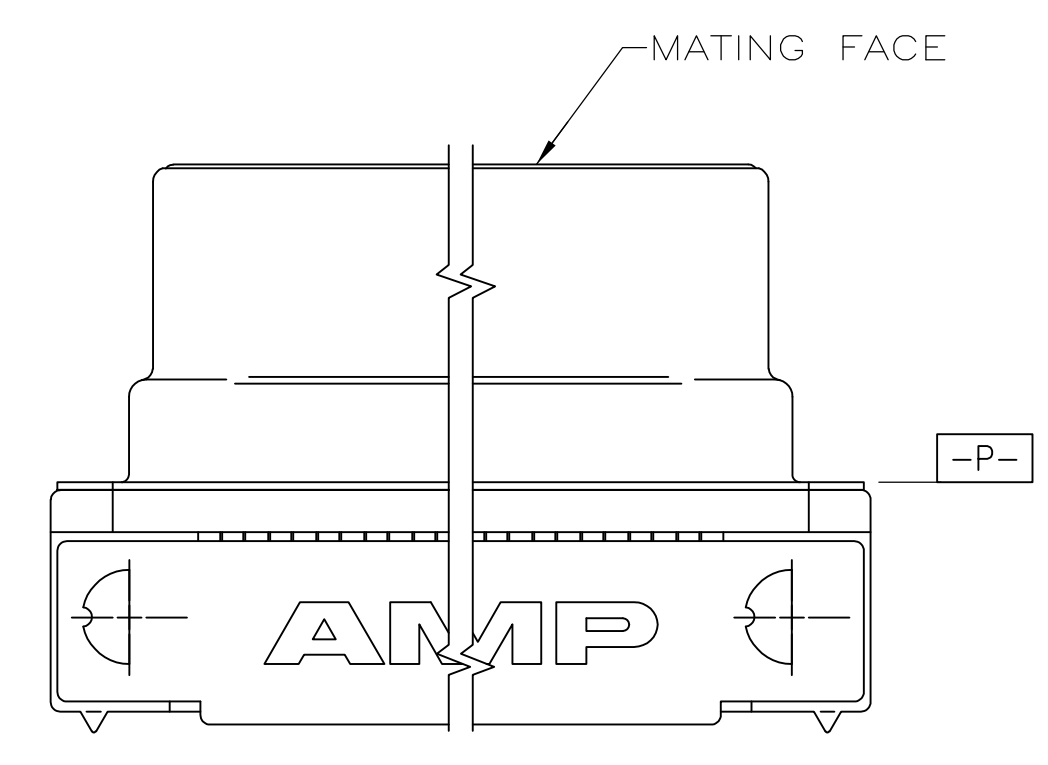
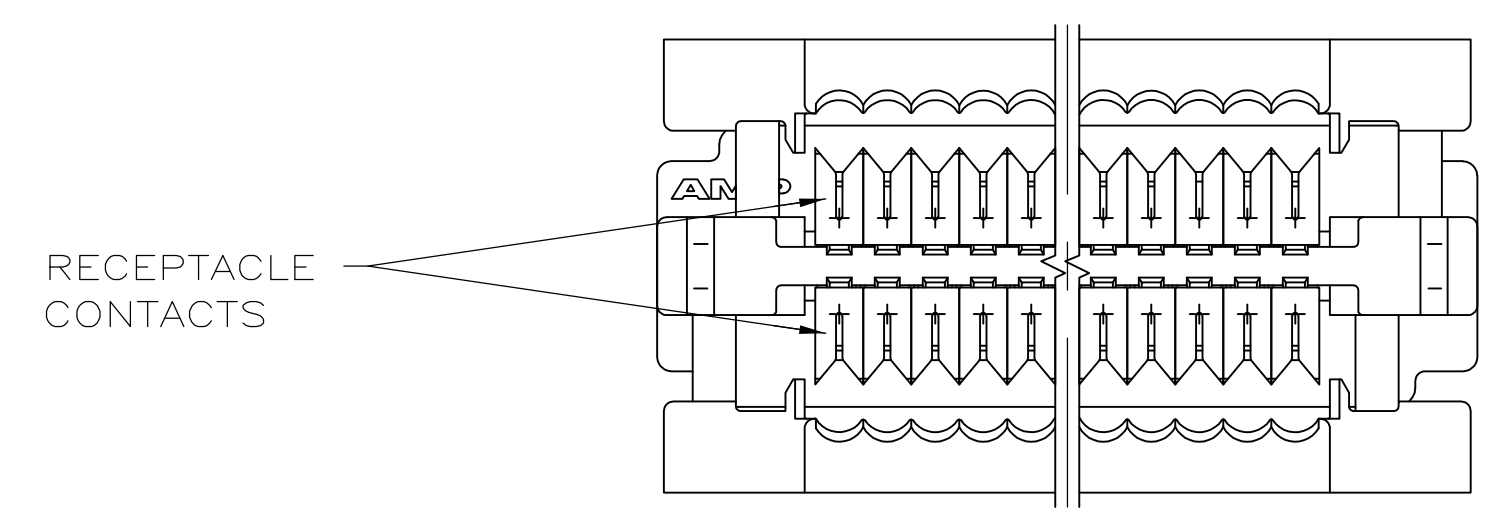
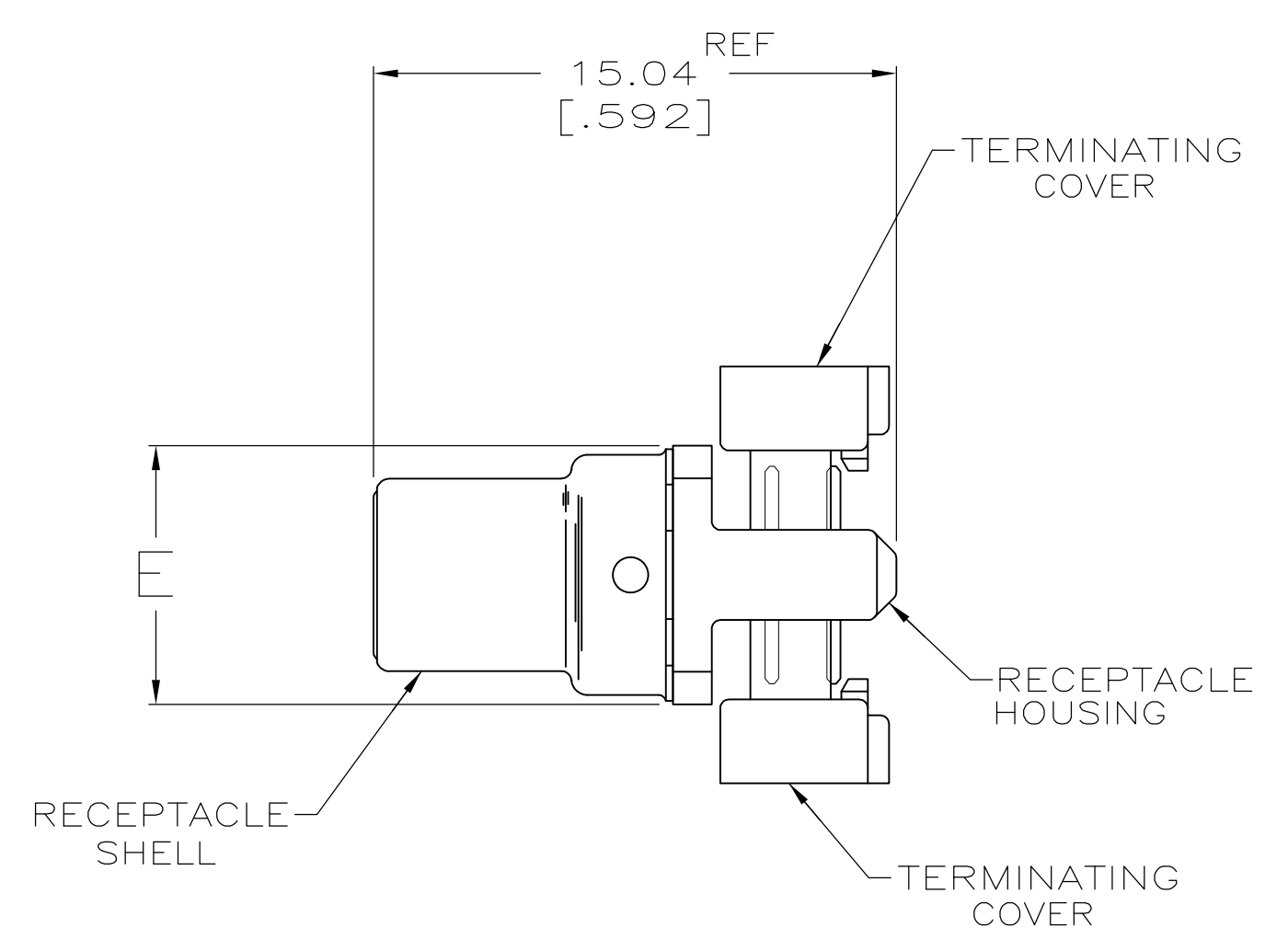
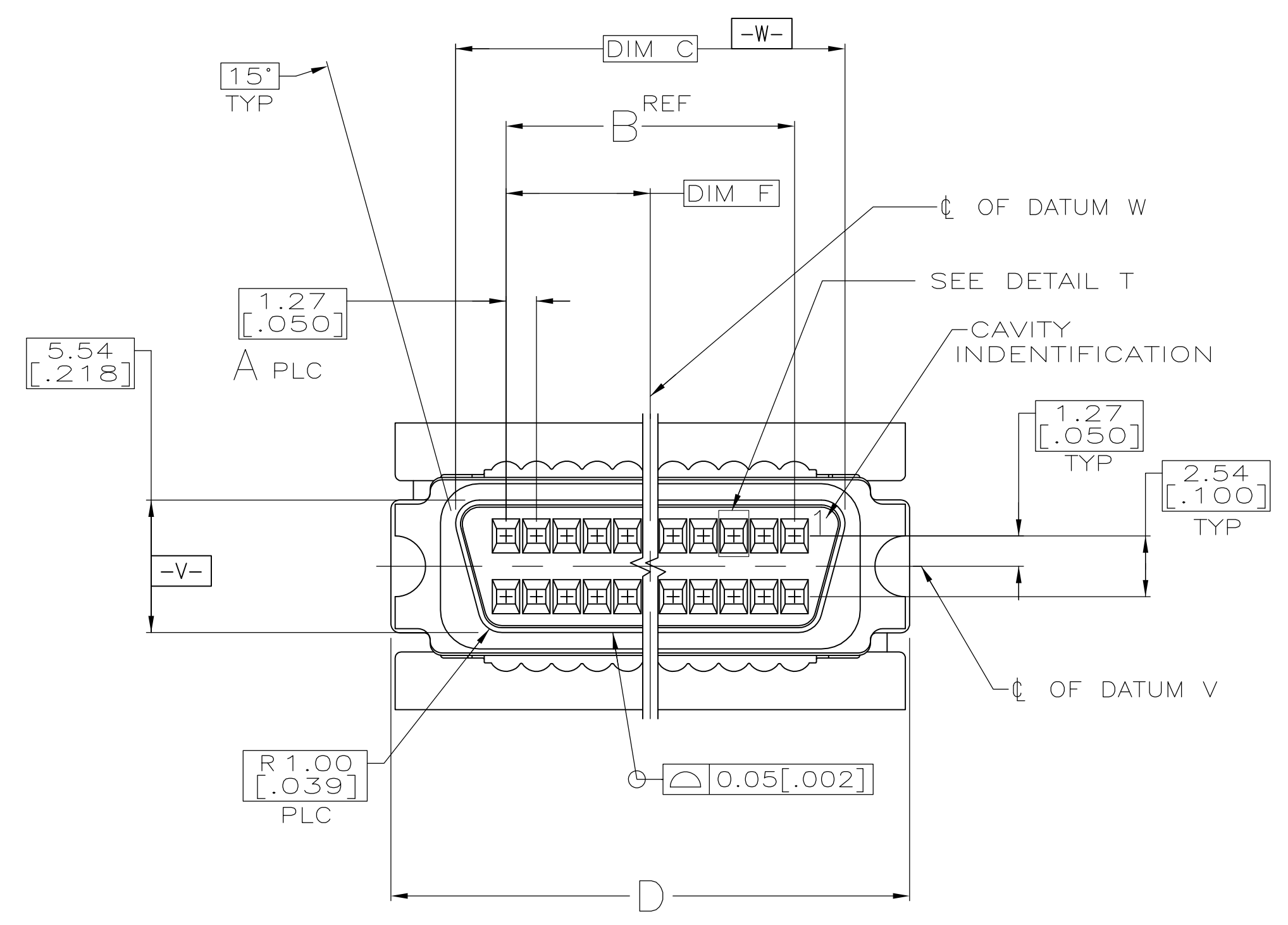


LOC		DIST		REVISIONS			
F	LTR	DESCRIPTION	DATE	DWN	APVD		
B		REVISED PER ECO-09-013070	7JUN2009	ZMR	SLB		



- MATERIAL:
 RECEPTACLE CONTACTS - PHOSPHOR BRONZE
 RECEPTACLE SHELL - STEEL
 RECEPTACLE HOUSING AND TERMINATING COVERS - UL V-0 RATED THERMOPLASTIC, COLOR: BLAed CK.
- PLATING:
 RECEPTACLE CONTACTS - EITHER 0.76µm [.000030] MINIMUM GOLD PLATE OR GOLD FLASH OVER PALLADIUM NICKEL PLATE 0.76µm [.000030] MIN TOTAL IN CONTACT AREA, 1.27µm [.000050] MINIMUM BRIGHT TIN PLATE IN TERMINATION AREA, ALL OVER 1.27µm [.000050] MINIMUM NICKEL.
 RECEPTACLE SHELL - 5.08µm [.000200] MINIMUM BRIGHT TIN PLATE OVER 1.27µm [.000050] MINIMUM COPPER.
- RECOMMENDED WIRE: 28 AWG OR 30 AWG, SOLID OR 7 STRANDED, WITH A 0.74-0.91 [.029-.036] INSULATION DIA, OR AMP .050 CENTERLINE 28 AWG, STRANDED, PVC, FLAT GRAY RIBBON CABLE, WIRE MUST BE APPROVED BY AMP INCORPORATED.

**COPYRIGHT 2005
 TYCO ELECTRONICS CORP
 ALL RIGHTS RESERVED**

20.96 [.825]	7.44 [.293]	51.54 [2.029]	46.13 [1.816]	41.91 [1.650]	33	68	5749210-7
15.24 [.600]	7.44 [.293]	40.11 [1.579]	34.70 [1.366]	30.48 [1.200]	24	50	5749210-5
F	E	D	C	B	A	NO OF POSN	PART NO

THIS DRAWING IS A CONTROLLED DOCUMENT.		DIN G.ATTADIA - DOCK 5 02-23-05	Tyco Electronics Corporation Harrisburg, PA 17105-3608	
DIMENSIONS: mm [INCHES]	TOLERANCES UNLESS OTHERWISE SPECIFIED:	CHK S.SHUEY 02-23-05	NAME M.WALMSLEY	
0 PLC ± -	1 PLC ± -	PRODUCT SPEC	RECEPTACLE ASSEMBLY, CABLE CONNECTOR, .050 SERIES, AMPLIMITE	
2 PLC ± -	3 PLC ± -	APPLICATION SPEC	SIZE A1	CAGE CODE 00779
4 PLC ± -	ANGLES ± -	WEIGHT	DRAWING NO 5749210	RESTRICTED TO
MATERIAL	FINISH	CUSTOMER DRAWING	SCALE 5:1	SHEET 1 OF 1