



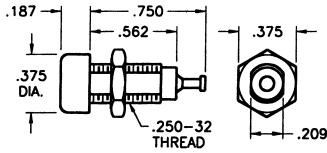
Designers' Choice

PLUGS & JACKS

FULLY-INSULATED DELUXE TIP JACK

ACCEPTS .080" TIP (WITH CLOSED ENTRY CONTACT)

Fully molded body with recessed closed entry design. Assures maximum retention with .01Ω maximum contact resistance. Prevents accidental insertion of larger diameter probes. Current rating: 10 Amps. Breakdown voltage 5700 VRMS. Capacitance to metal panel 2.0 pF nominal. Supplied with nut.



SELECTION OF COLORS

| CAT. NO. | COLOR |
|----------|--------|
| 6030 | WHITE |
| 6031 | RED |
| 6032 | BLACK |
| 6033 | GREEN |
| 6034 | YELLOW |
| 6035 | BLUE |

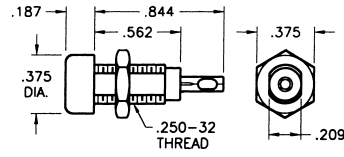
MATERIAL

Body: Molded Nylon ASTM D4066
Contact: Beryllium Copper, Silver Plate
Terminal: Brass, Tin Plate

FULLY-INSULATED STANDARD TIP JACK

ACCEPTS .080" TIP

Economical tip jacks with molded Nylon body. Low contact resistance. Formed phosphor bronze contact with solder hole for ease in attaching wire. Current rating 10 Amps. Breakdown voltage 5700 VRMS. Capacitance to metal panel 3.8 pF. Supplied with nut.



SELECTION OF COLORS

| CAT. NO. | COLOR |
|----------|--------|
| 6018 | WHITE |
| 6019 | RED |
| 6020 | BLACK |
| 6021 | GREEN |
| 6022 | YELLOW |
| 6023 | BLUE |

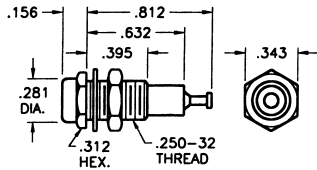
MATERIAL

Body: Molded Nylon ASTM D4066
Contact: Phosphor Bronze, Tin Plate

METAL-CLAD TIP JACK (MIL)

ACCEPTS .080" TIP (WITH CLOSED ENTRY CONTACT)

High quality tip jack for high reliability industrial applications. Ideal for use where required to withstand severe environmental conditions, temperature, vibration and salt spray. Recessed closed entry contact. Current rating: 5 Amps. Breakdown voltage: 5700 VRMS. Made to MS-16108 Rev. F of MIL-STD-242A and MIL-C39024/10. Capacitance to metal panel 2.0 pF. Supplied complete with hardware.



SELECTION OF COLORS

| CAT. NO. | COLOR |
|----------|--------|
| 6012 | WHITE |
| 6013 | RED |
| 6014 | BLACK |
| 6015 | GREEN |
| 6016 | YELLOW |
| 6017 | BLUE |

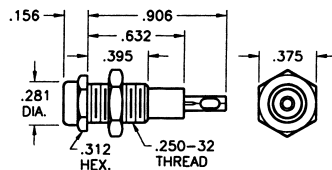
MATERIAL

Body: Molded Nylon
 ASTM D4066
Shell & Nut: Brass QQ-B-626
 Nickel Plate QQ-N-290
Contact: Beryllium Copper
 PER QQ-C-533. Gold Plate
 MIL-G-45204

METAL-CLAD TIP JACK (STD)

ACCEPTS .080" TIP

Molded Nylon body with metal jacket. Contact is formed from phosphor bronze with solder hole for ease in attaching wire. Designed for positive contact, easy insertion and withdrawal. Current rating: 10 Amps. Breakdown voltage: 5700VRMS. Capacitance to metal panel 3.8 pF. Supplied with nut.



SELECTION OF COLORS

| CAT. NO. | COLOR |
|----------|--------|
| 6024 | WHITE |
| 6025 | RED |
| 6026 | BLACK |
| 6027 | GREEN |
| 6028 | YELLOW |
| 6029 | BLUE |

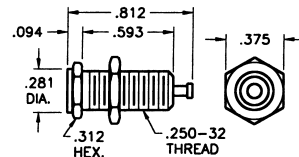
MATERIAL

Body: Molded Nylon
 ASTM D4066
Shell: Brass, Nickel Plate
Contact: Phosphor, Bronze
 Silver Plate

UNINSULATED TIP JACK

ACCEPTS .080" TIP

Quality, precision machined tip jack made of brass. Ideal for use on metal panels where grounding is required. Fits panels up to 3/8" thk. Complete with hex nut.



MATERIAL

Body: Brass, Nickel Plate
Contact: Beryllium Copper
 Rating: 15 Amps

CAT. NO. 6097

CUSTOM PLUGS & JACKS

Keystone is fully integrated to meet your total design & production needs.

Manufacturing custom designs & modifications of standard items is our specialty.

Quotations on special **Plugs and Jacks** furnished promptly upon receipt of sample, sketch, print or CAD drawings.