



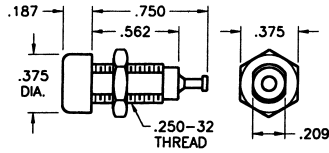
Designers' Choice

# PLUGS & JACKS

## FULLY-INSULATED DELUXE TIP JACK

ACCEPTS .080" TIP (WITH CLOSED ENTRY CONTACT)

Fully molded body with recessed closed entry design. Assures maximum retention with .01Ω maximum contact resistance. Prevents accidental insertion of larger diameter probes. Current rating: 10 Amps. Breakdown voltage 5700 VRMS. Capacitance to metal panel 2.0 pF nominal. Supplied with nut.



SELECTION OF COLORS

CAT. NO.	COLOR
6030	WHITE
6031	RED
6032	BLACK
6033	GREEN
6034	YELLOW
6035	BLUE

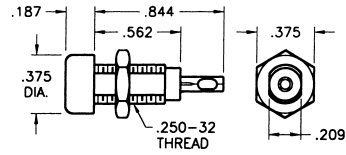
### MATERIAL

**Body:** Molded Nylon ASTM D4066  
**Contact:** Beryllium Copper, Silver Plate  
**Terminal:** Brass, Tin Plate

## FULLY-INSULATED STANDARD TIP JACK

ACCEPTS .080" TIP

Economical tip jacks with molded Nylon body. Low contact resistance. Formed phosphor bronze contact with solder hole for ease in attaching wire. Current rating 10 Amps. Breakdown voltage 5700 VRMS. Capacitance to metal panel 3.8 pF. Supplied with nut.



SELECTION OF COLORS

CAT. NO.	COLOR
6018	WHITE
6019	RED
6020	BLACK
6021	GREEN
6022	YELLOW
6023	BLUE

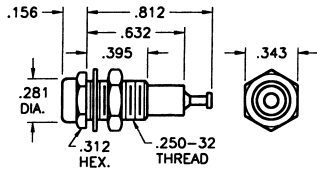
### MATERIAL

**Body:** Molded Nylon ASTM D4066  
**Contact:** Phosphor Bronze, Tin Plate

## METAL-CLAD TIP JACK (MIL)

ACCEPTS .080" TIP (WITH CLOSED ENTRY CONTACT)

High quality tip jack for high reliability industrial applications. Ideal for use where required to withstand severe environmental conditions, temperature, vibration and salt spray. Recessed closed entry contact. Current rating: 5 Amps. Breakdown voltage: 5700 VRMS. Made to MS-16108 Rev. F of MIL-STD-242A and MIL-C39024/10. Capacitance to metal panel 2.0 pF. Supplied complete with hardware.



SELECTION OF COLORS

CAT. NO.	COLOR
6012	WHITE
6013	RED
6014	BLACK
6015	GREEN
6016	YELLOW
6017	BLUE

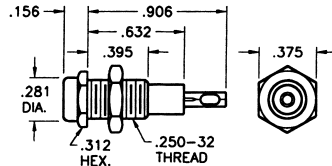
### MATERIAL

**Body:** Molded Nylon  
ASTM D4066  
**Shell & Nut:** Brass QQ-B-626  
Nickel Plate QQ-N-290  
**Contact:** Beryllium Copper  
PER QQ-C-533. Gold Plate  
MIL-G-45204

## METAL-CLAD TIP JACK (STD)

ACCEPTS .080" TIP

Molded Nylon body with metal jacket. Contact is formed from phosphor bronze with solder hole for ease in attaching wire. Designed for positive contact, easy insertion and withdrawal. Current rating: 10 Amps. Breakdown voltage: 5700VRMS. Capacitance to metal panel 3.8 pF. Supplied with nut.



SELECTION OF COLORS

CAT. NO.	COLOR
6024	WHITE
6025	RED
6026	BLACK
6027	GREEN
6028	YELLOW
6029	BLUE

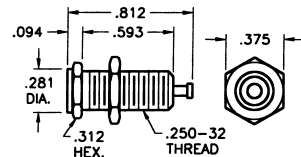
### MATERIAL

**Body:** Molded Nylon  
ASTM D4066  
**Shell:** Brass, Nickel Plate  
**Contact:** Phosphor, Bronze  
Silver Plate

## UNINSULATED TIP JACK

ACCEPTS .080" TIP

Quality, precision machined tip jack made of brass. Ideal for use on metal panels where grounding is required. Fits panels up to 3/8" thk. Complete with hex nut.



### MATERIAL

**Body:** Brass, Nickel Plate  
**Contact:** Beryllium Copper  
**Rating:** 15 Amps

CAT. NO. 6097

## CUSTOM PLUGS & JACKS

Keystone is fully integrated to meet your total design & production needs.

Manufacturing custom designs & modifications of standard items is our specialty.

Quotations on special **Plugs and Jacks** furnished promptly upon receipt of sample, sketch, print or CAD drawings.