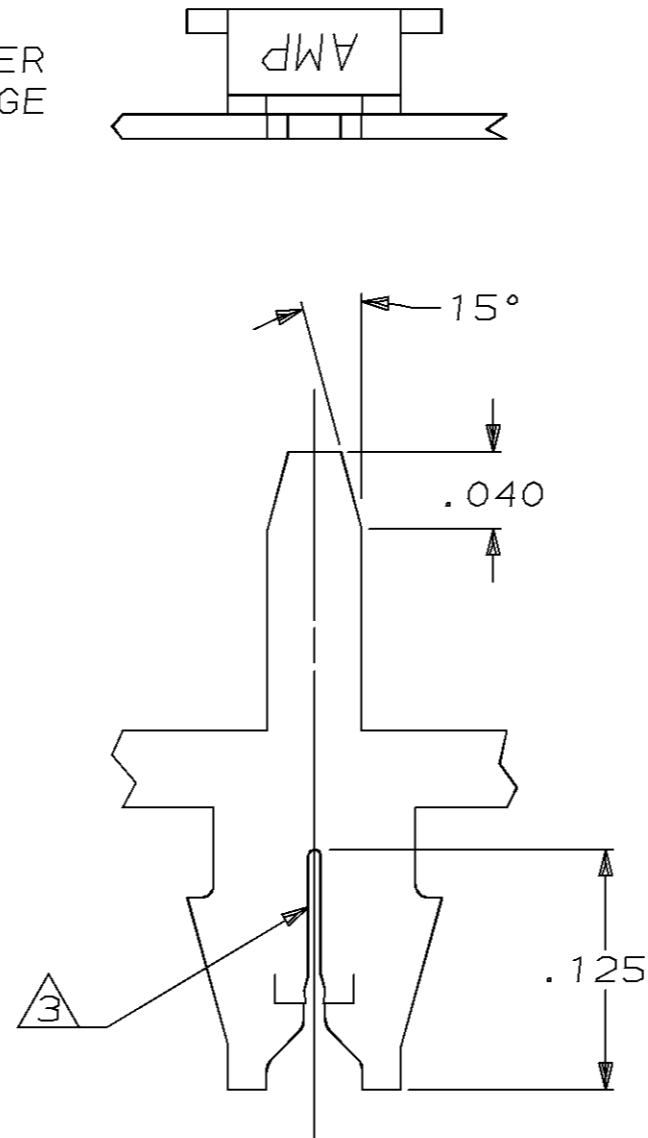
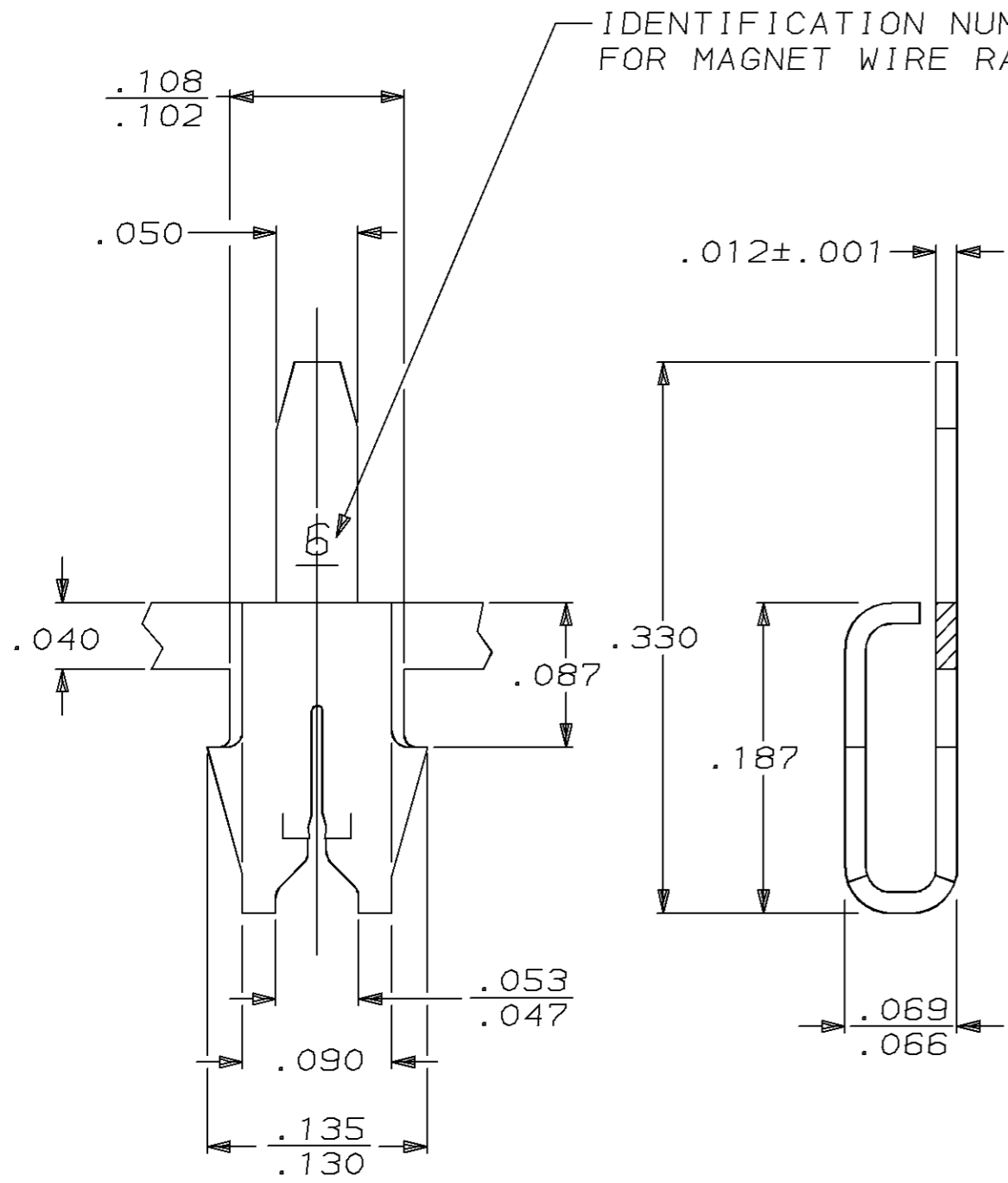


THIS DRAWING IS UNPUBLISHED. RELEASED FOR PUBLICATION, 19 .
 © COPYRIGHT 19 BY AMP INCORPORATED. ALL INTERNATIONAL RIGHTS RESERVED.

LOC	DIST	P	F	REVISIONS				
AF	50			ZONE	LTR	DESCRIPTION	DATE	APPD
					F	REV PER 0710-0138-96	2MAY96	R6/NN



- ① MAG-MATE CAVITY SPECIFICATION.
- ② CONTINUOUS STRIP ON REELS WITH TERMINALS LOCATED ON .200 CENTERS.
- ③ SLOT ACCEPTS #30-#28 AWG COPPER MAGNET WIRE.
- ④ REELED FOR APPLICATION THROUGH MAG-MATE INSERTION MACHINE
- ⑤ REELED FOR INSERTION INTO PRINTED CIRCUIT BOARD
- ⑥ 0.002032 [.000080] MIN TIN PER MIL-T-10727 OVER 0.00127 [.000050] MIN NICKEL PER QQ-N-290

⑤	62430-2
④	62430-1
REELING	PART NO

DO NOT SCALE PRINT. UNLESS SPECIFIED DIMENSIONS IN INCHES TOLERANCES ON: 2 PLC DEC ± - 3 PLC DEC ± .010 ANGLES ± -	DR 11/21/88 M.S. FEHER	AMP INCORPORATED Harrisburg, Pa. 17105
	CHK 11/27/88 JR RUTH	
MATERIAL #4 HARD BRASS	APPD 11/28/88 NELSON E. NEFF	NAME TERMINAL, POSTED, MAG-MATE™
FINISH ⑥	APPD 11/28/88 C.G. ATHERTON	SIZE B
	PRODUCT SPEC -	FSCM NO 00779
	APPLICATION SPEC 114-2069 ①	DRAWING NO 62430
	WEIGHT -	SCALE 10:1
		SHEET 1 OF 1