

THIS DRAWING IS UNPUBLISHED. RELEASED FOR PUBLICATION, 19 .  
 © COPYRIGHT 19 BY AMP INCORPORATED. ALL INTERNATIONAL RIGHTS RESERVED.

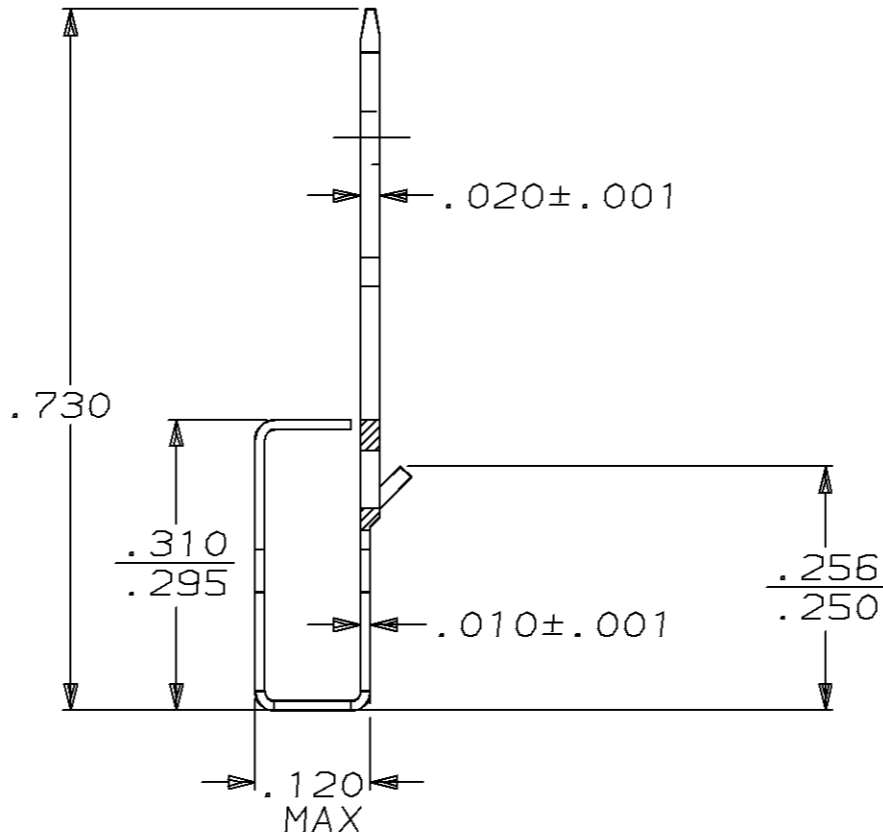
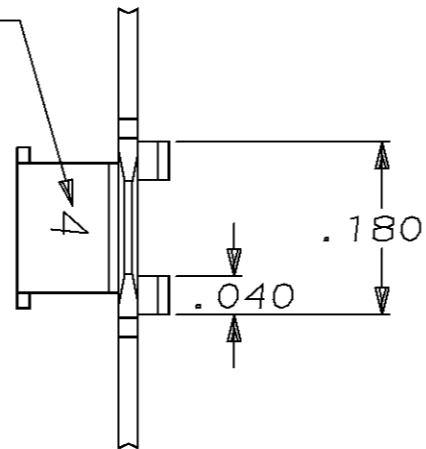
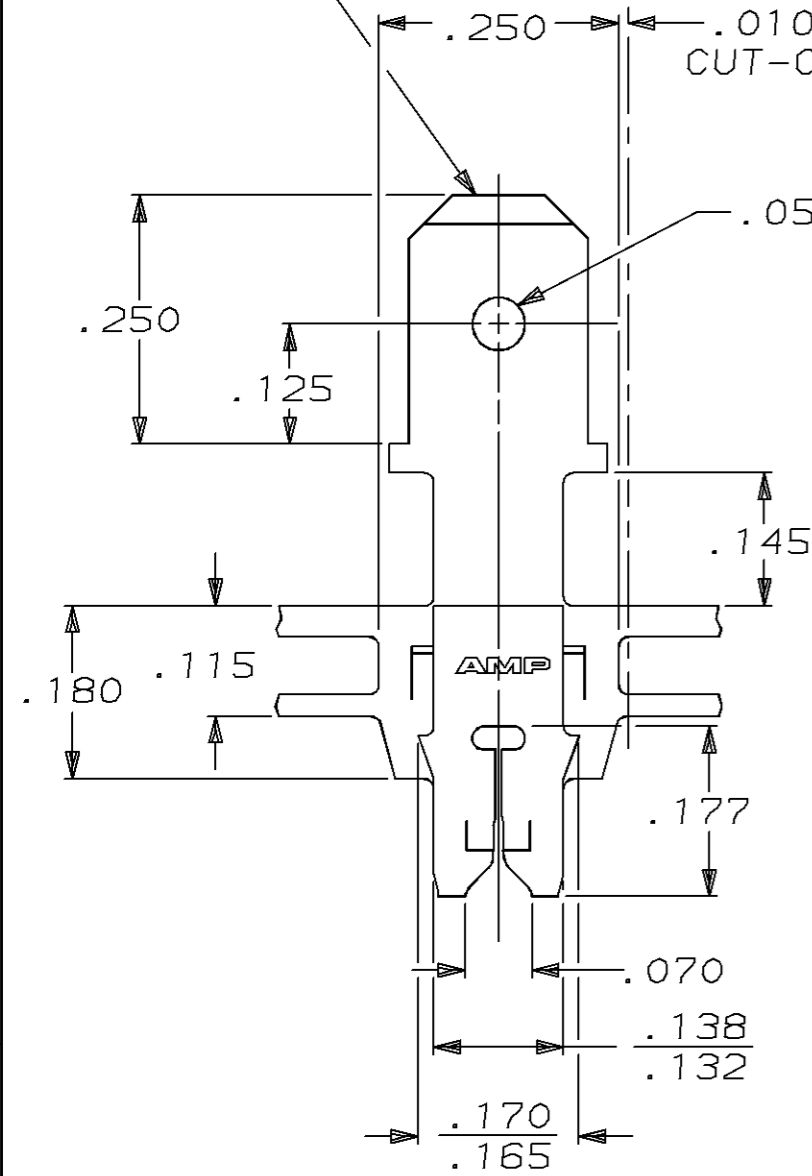
LOC	DIST	P	F	REVISIONS				
AF	50			ZONE	LTR	DESCRIPTION	DATE	APPD
					E	REVISED PER 0710-0455-94	14/JAN/94	MF/NN

IDENTIFICATION NUMBER FOR MAGNET WIRE RANGE

FITS .187 SERIES FASTON RECEPTACLE

.010 MAX CUT-OFF TAB

.055 DIA



- 1 MAG-MATE CAVITY SPECIFICATION.
- 2 CONTINUOUS STRIP ON REELS WITH TERMINALS LOCATED ON .330±.003 CENTERS.
- 3 SLOT TERMINATES EITHER SINGLE OR DOUBLE MAGNET WIRES OF THE SAME TYPE AND SIZE, COPPER RANGE IS #33-#31 AWG.

63505-1

PART NO

**AMP** AMP INCORPORATED  
Harrisburg, Pa. 17105

NAME  
TAB, 187 FASTON,™  
MAG-MATE™

DO NOT SCALE PRINT. UNLESS SPECIFIED DIMENSIONS IN INCHES. TOLERANCES ON: 2 PLC DEC ± - 3 PLC DEC ± .010 ANGLES ± -	DR 7/6/88 MS FEHER	SIZE <b>B</b>	FSCM NO 00779	DRAWING NO 63505
	CHK 7/12/88 JR RUTH			
	APPD 7/12/88 N NEFF			
MATERIAL #4M HARD PRE-MILLED BRASS	APPD 7/12/88 C ATHERTON	SCALE 5:1	SHEET 1 OF 1	
FINISH .000080 MIN TIN	PRODUCT SPEC 108-2012			
	APPLICATION SPEC 114-2094			
	WEIGHT -			

CUSTOMER DRAWING