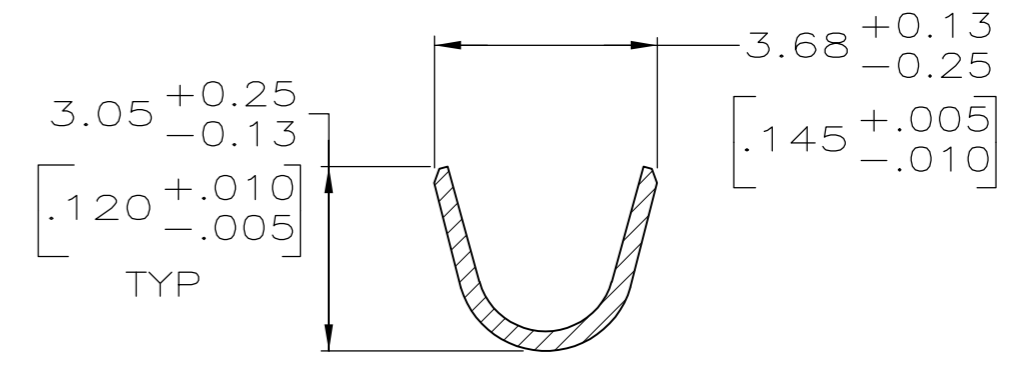
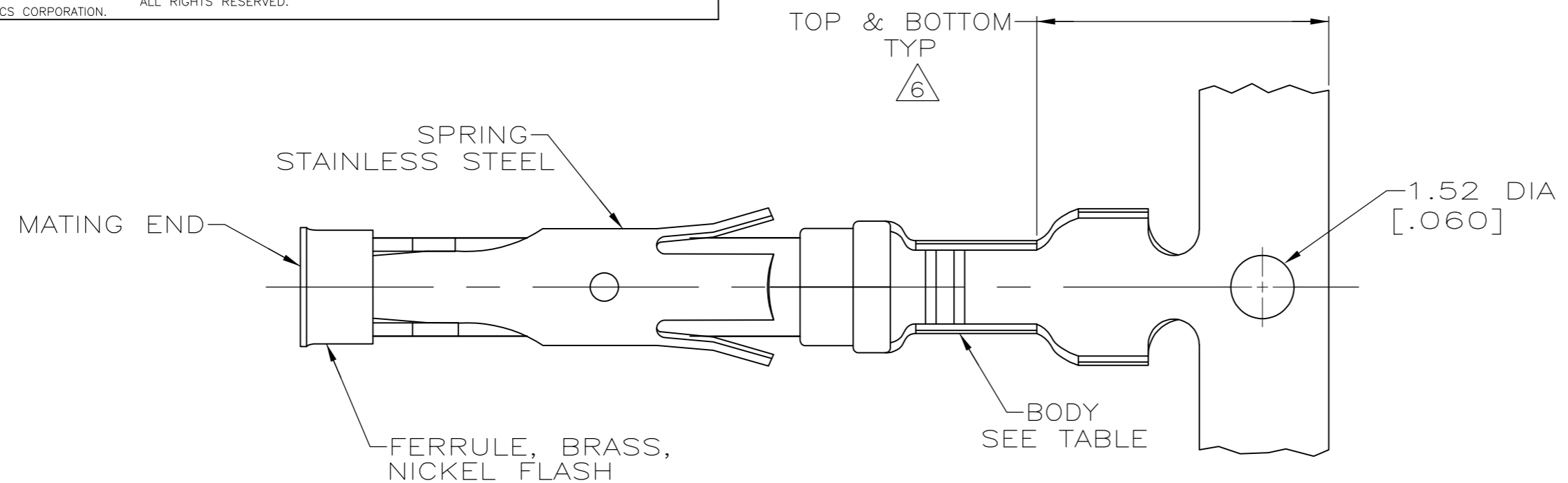


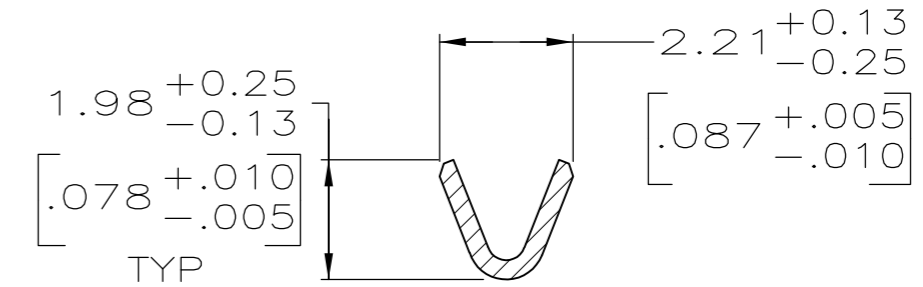
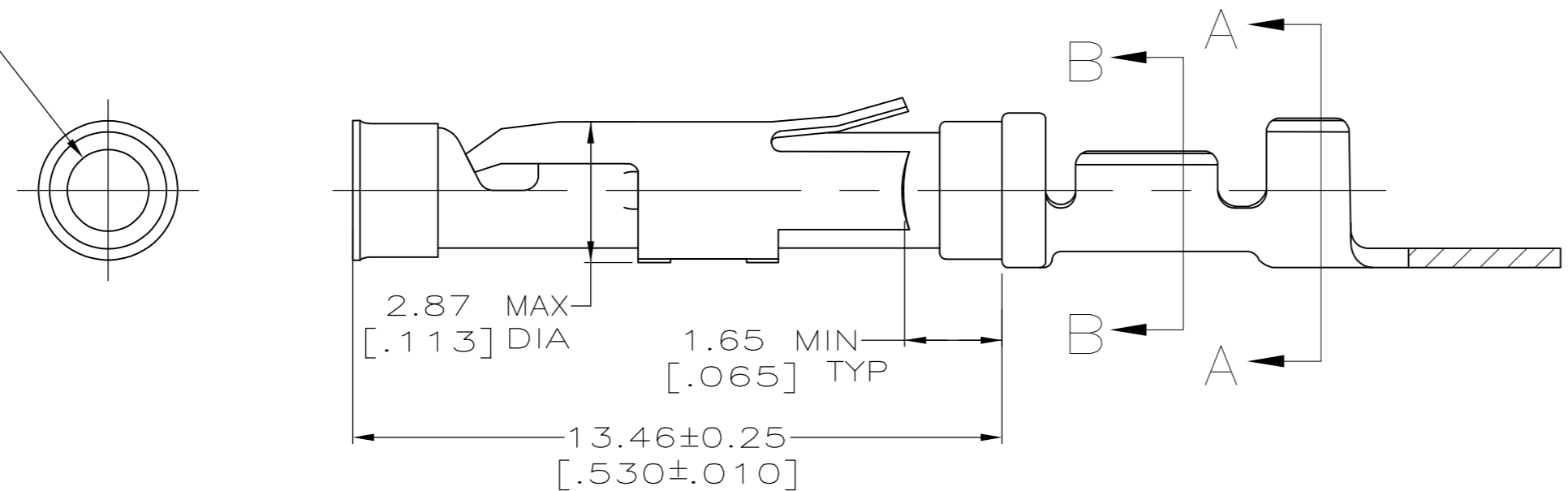
THIS DRAWING IS UNPUBLISHED. RELEASED FOR PUBLICATION
 © COPYRIGHT BY TYCO ELECTRONICS CORPORATION. ALL RIGHTS RESERVED.

| LOC | DIST | REVISIONS | | | | | |
|-----|------|-----------|-----|---------------------------|----------|-----|------|
| FT | 0 | P | LTR | DESCRIPTION | DATE | DWN | APVD |
| | | W | | REVISED PER 0G3B-0956-04 | 11/17/04 | SS | GS |
| | | W1 | | REVISED PER ECO-09-021826 | 27AUG09 | KK | AEG |



SECTION A-A

1.689±0.051 DIA
 [.0665±.0020]



SECTION B-B

- 1 0.76µm [.000030] MIN GOLD PER MIL-G-45204 ON MATING END FOR A LENGTH OF 5.08 [.200] MIN WITH GOLD FLASH ON THE REMAINDER OVER 0.76µm [.000030] MIN NICKEL PER QQ-N-290.
- 2 1.27µm [.000050] MIN TIN-LEAD PER MIL-T-10727 OVER 0.76µm [.000030] MIN NICKEL PER QQ-N-290.
- 3 0.76µm [.000030] MIN GOLD PER MIL-G-45204 ON MATING END FOR A LENGTH OF 5.08 [.200] MIN WITH A UNIFORM GRADIENT TO 0.25µm [.000010] MIN GOLD PER MIL-G-45204 ON THE REMAINDER OVER 0.76µm [.000030] MIN NICKEL PER QQ-N-290.
- 4 0.38µm [.000015] MIN GOLD PER MIL-G-45204 ON MATING END FOR A LENGTH OF 5.08 [.200] MIN WITH GOLD FLASH ON THE REMAINDER OVER 0.76µm [.000030] MIN NICKEL PER QQ-N-290.
- 5 1.27µm [.000050] MIN GOLD PER MIL-G-45204 ON MATING END FOR A LENGTH OF 5.08 [.200] MIN WITH GOLD FLASH ON REMAINDER OVER 0.76µm [.000030] MIN NICKEL PER QQ-N-290.
- 6 GOLD PLATING NEED NOT APPEAR IN THIS AREA.
- 7 REVERSE REELED FOR MINI-APPLICATOR.
- 8. WIRE RANGE 24-20 AWG.
 INSULATION RANGE 2.03[.080]-2.54[.100].
- 9 NOT RELEASED, AMP HOLLAND USE ONLY.
- 10 0.38µm [.000015] MIN GOLD PER MIL-G-45204 ON MATING END FOR A LENGTH OF 5.08 [.200] MIN, 1.27µm [.000050] MIN TIN-LEAD PER MIL-T-10727 FOR A LENGTH OF 5.69 [.224] MIN ON OPPOSITE END, BOTH OVER 1.27µm [.000050] MIN NICKEL PER QQ-N-290 ON ENTIRE CONTACT.
- 11 1.27µm [.000050] MIN TIN PER MIL-T-10727 OVER 0.76µm [.000030] MIN NICKEL PER QQ-N-290.
- 12 OBSOLETE PARTS: OBSOLETE CIS STREAMLINING PER D.RENAUD/D.SINISI

| STANDARD | 11 | BRASS | 1-66399-0 | 1-66331-5 |
|-------------|-------------|-----------------|-----------------|----------------------|
| 7 | 11 | BRASS | 1-66399-0 | 1-66331-4 |
| 12 OBSOLETE | 1 | PHOSPHOR BRONZE | - | 1-66331-3 |
| OBSOLETE | 10 | BRASS | 66399-5 | 1-66331-2 |
| OBSOLETE | 5 | BRASS | - | 1-66331-1 |
| - | - | BRASS | - | 9 1-66331-0 |
| OBSOLETE | - | BRASS | - | 9 66331-9 |
| 7 | 1 | BRASS | 66399-4 | 66331-8 |
| 7 | 4 | BRASS | 66399-3 | 66331-7 |
| 7 | 3 | BRASS | 66399-2 | 66331-6 |
| 7 | 2 | BRASS | 66399-1 | 66331-5 |
| STANDARD | 1 | BRASS | 66399-4 | 66331-4 |
| STANDARD | 3 | BRASS | 66399-2 | 66331-2 |
| STANDARD | 2 | BRASS | 66399-1 | 66331-1 |
| REELING | BODY FINISH | BODY MATERIAL | LOOSE PIECE REF | PART NO. |

THIS DRAWING IS A CONTROLLED DOCUMENT.

| | | | |
|-----------------------|--|------------------------|--|
| DIMENSIONS: INCHES | TOLERANCES UNLESS OTHERWISE SPECIFIED: | DWN R.SHIREY 08/06/91 | Tyco Electronics Corporation Harrisburg, Pa |
| | | CHK R.STONE 9-19-91 | |
| | | APVD J.WESTMAN 9-20-91 | NAME SOCKET ASSEMBLY, .062, TYPE III+ |
| | | PRODUCT SPEC | SIZE CAGE CODE DRAWING NO RESTRICTED TO |
| | | APPLICATION SPEC | A2 00779 C=66331 |
| MATERIAL SEE CALLOUTS | FINISH SEE CALLOUTS | WEIGHT - | SCALE 8:1 SHEET 1 OF 1 REV W1 |
| | | CUSTOMER DRAWING | |