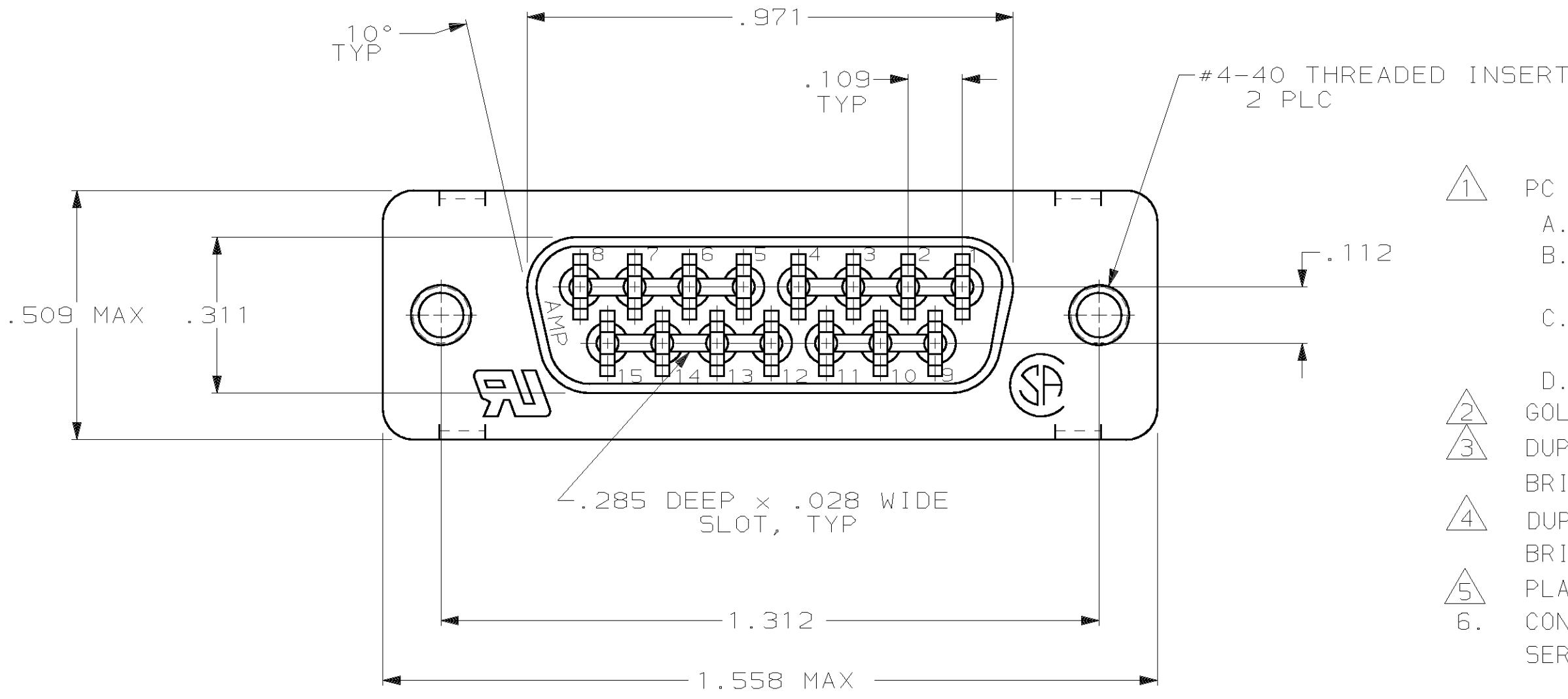
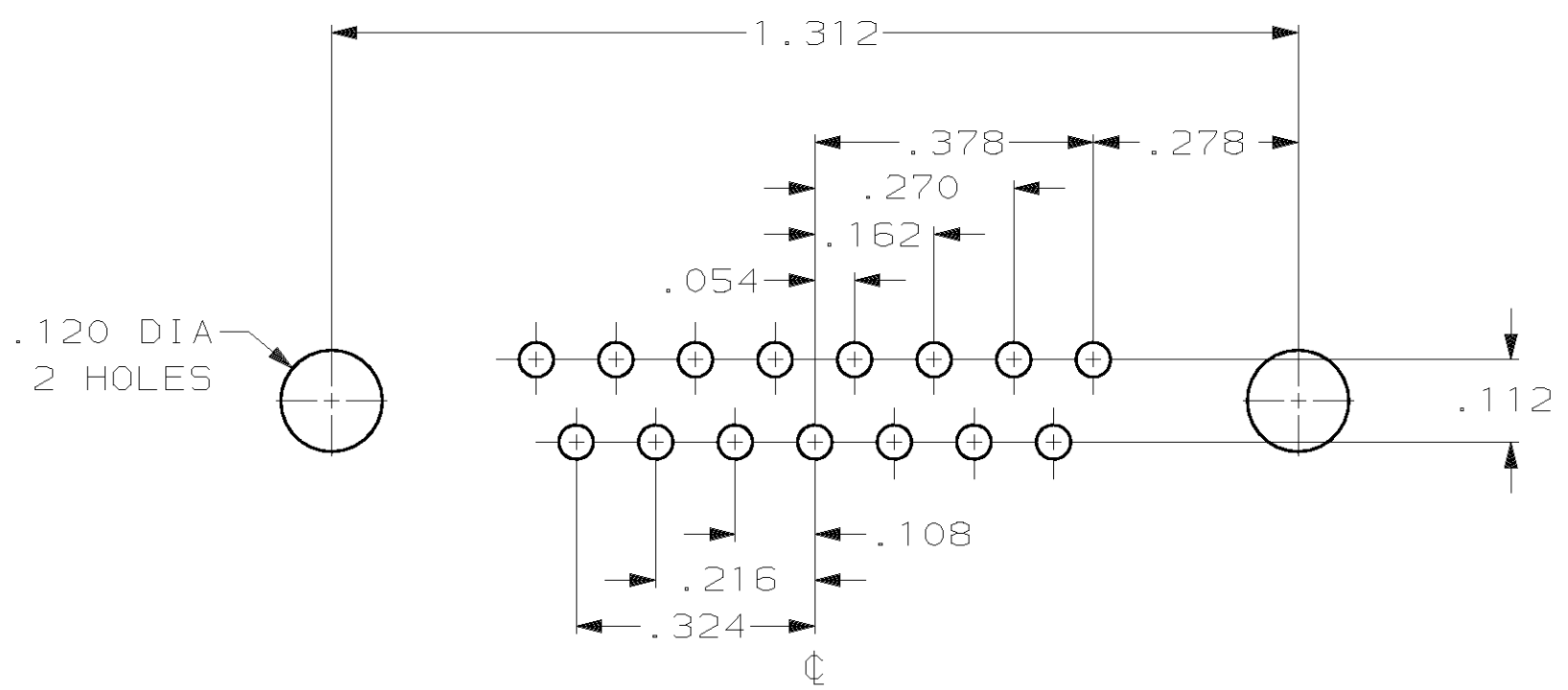
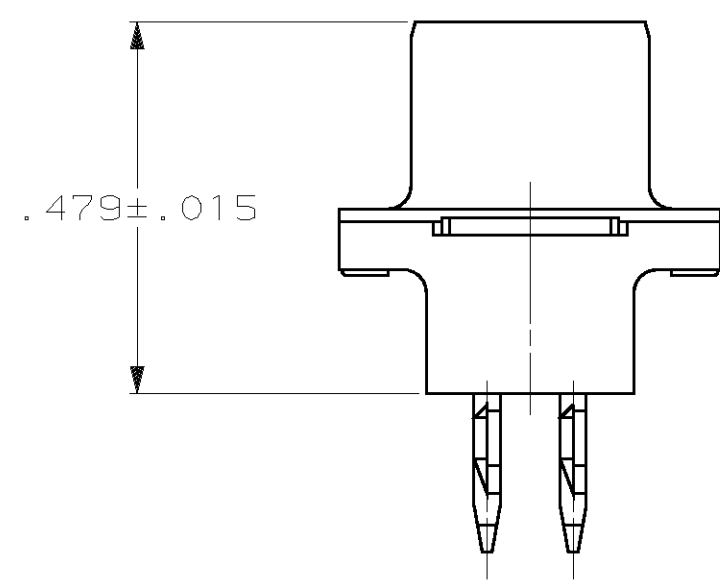
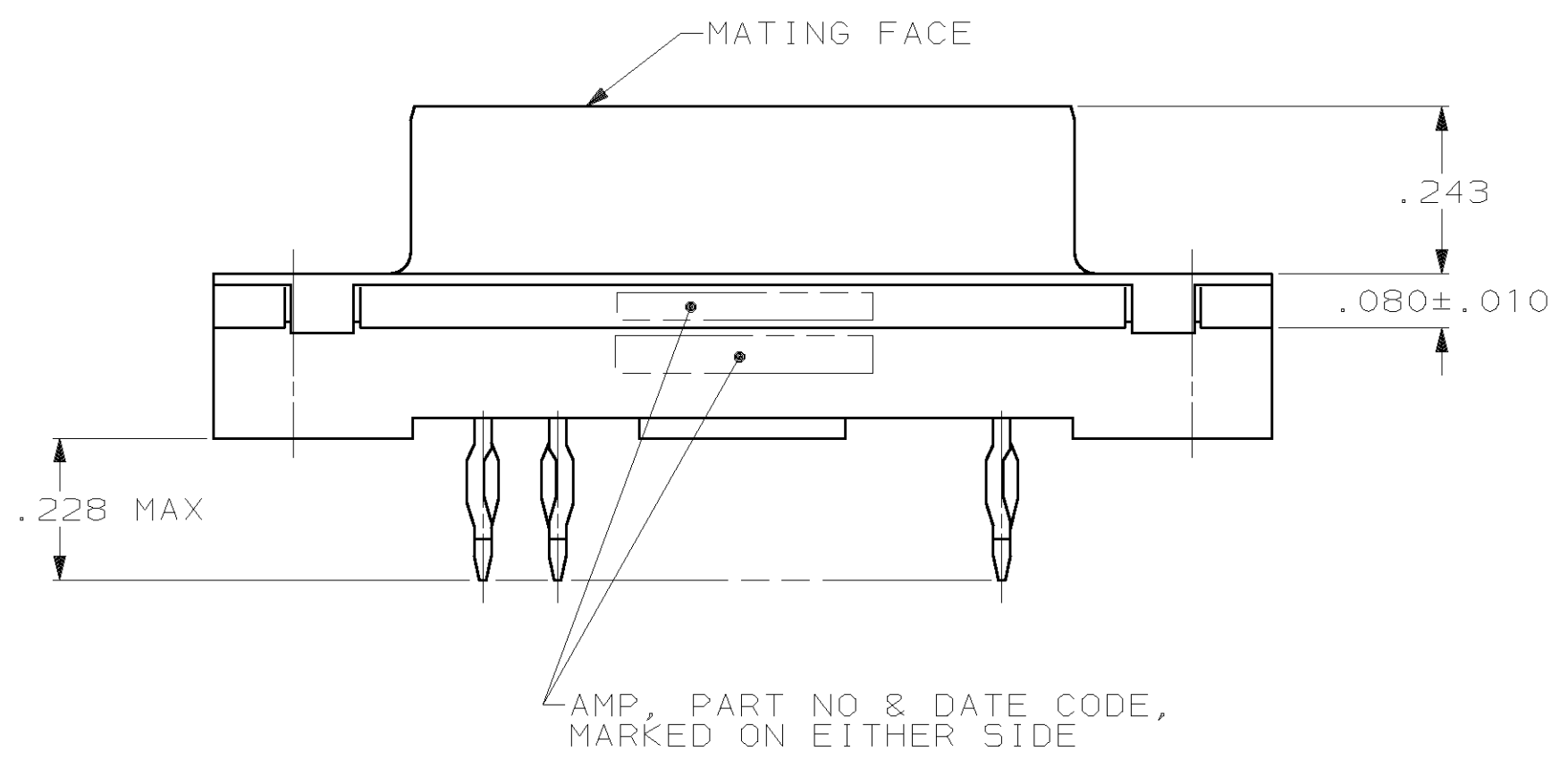


THIS DRAWING IS UNPUBLISHED. RELEASED FOR PUBLICATION, 19 .
 © COPYRIGHT 19 BY AMP INCORPORATED. ALL INTERNATIONAL RIGHTS RESERVED.

LOC		D15T		REVISIONS				DATE	APPD
GP	00	P	F	ZONE	LTR	DESCRIPTION	06NOV01	JR	
				K		REV PER EC OUE0-0045-01			



- 1 PC BOARD RECOMMENDATIONS:
- A. HOLES SHOULD BE DRILLED WITH A 1.15 mm DRILL.
 - B. MINIMUM PCB TIN/LEAD PLATING TO BE .0003 THICK OVER .002±.001 THICK COPPER.
 - C. RECOMMENDED HOLE SIZE AFTER TIN/LEAD PLATING IS .037 TO .043 FOR PCB .093 TO .125 THICK.
 - D. IF HOLE IS REFLOWED AFTER PLATING, DIA TO BE .036 TO .043.
- 2 GOLD PLATING PER MIL-G-45204, NICKEL PLATING PER QQ-N-290.
- 3 DUPLEX PLATED: GOLD FLASH ON MATING SURFACE, BRIGHT TIN OR BRIGHT TIN LEAD ON COMPLIANT PIN, ALL OVER NICKEL.
- 4 DUPLEX PLATED: .000030 GOLD ON MATING SURFACE, BRIGHT TIN OR BRIGHT TIN LEAD ON COMPLIANT PIN, ALL OVER NICKEL.
- 5 PLATED .0002-.0004 BRIGHT TIN PER MIL-T-10727.
6. CONNECTOR MATES WITH ANY SIZE 2, 15 POSITION PLUG IN AMPLIMITE™ SERIES & COMPLIES WITH AMP SPEC 108-40014 WHERE APPLICABLE.



SUPERSEDED BY 747141-2

4	747141-2
3	747141-1
FINISH 2	PART NO

DO NOT SCALE PRINT. UNLESS SPECIFIED DIMENSIONS IN INCHES TOLERANCES ON : 2 PLC DEC ± 3 PLC DEC ± .005 ANGLES ± 2°		DR 03-31-94 D.HARDY		AMP Incorporated Harrisburg, PA 17105-3608	
MATERIAL HOUSING: FLAME RETARDANT 94V-0 RATED THERMOPLSTC; COLOR: BLACK CONTACTS: COPPER ALLOY SHELL: STEEL PER QQ-5-698 INSERT: BRASS		CHK 04-26-94 R.STONE			
FINISH CONTACTS: SEE TABLE SHELL: 2 INSERTS: UNPLATED		APPD 04-26-94 M.PERCHERKE		NAME RCPT ASSY, SIZE 2, 15 POSN, AMPLIMITE™ HDP, MDM PROFILE, W/ ACTION PIN CONT & METAL SHELL (PCB-.093/.125), #4-40 THREADED INSERTS	
		APPD 04-26-94 M.PERCHERKE		SIZE CAGE CODE DRAWING NO C 00779 C=747141	
		PRODUCT SPEC		SCALE 4:1 SHEET 1 OF 1	
		APPLICATION SPEC			
		WEIGHT -			

THIS DRAWING IS A CONTROLLED DOCUMENT FOR AMP INCORPORATED. IT IS SUBJECT TO CHANGE AND THE CONTROLLING ENGINEERING ORGANIZATION SHOULD BE CONTACTED FOR THE LATEST REVISION.