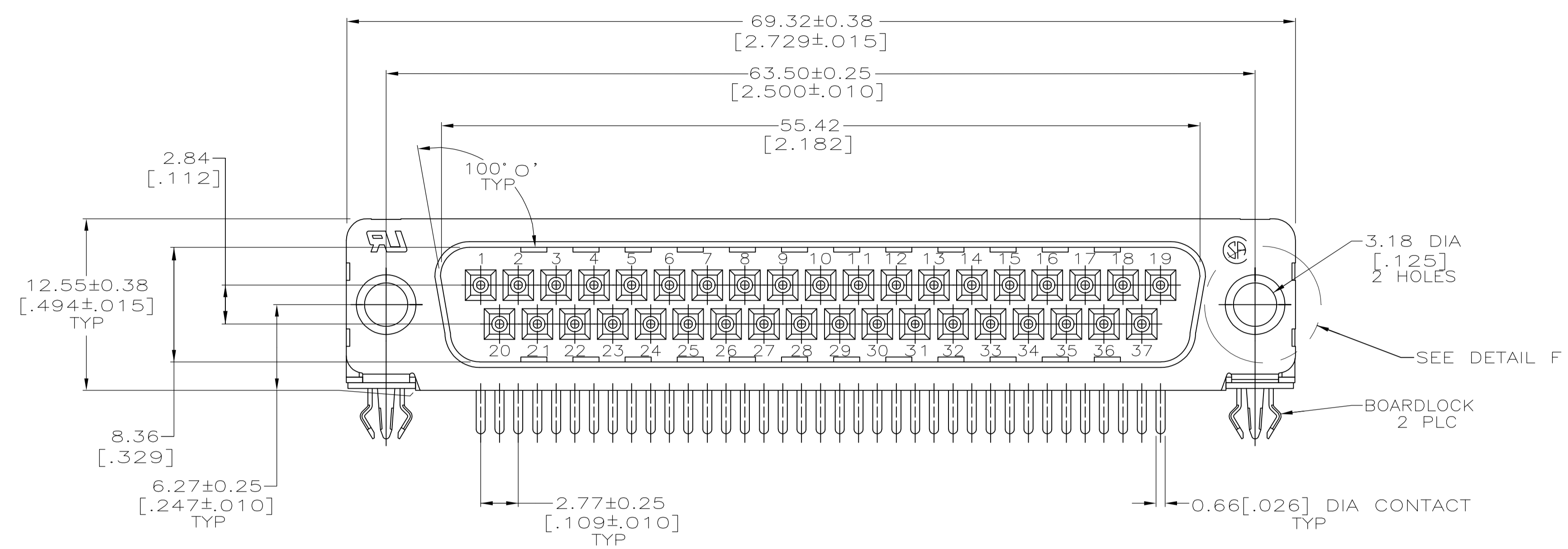
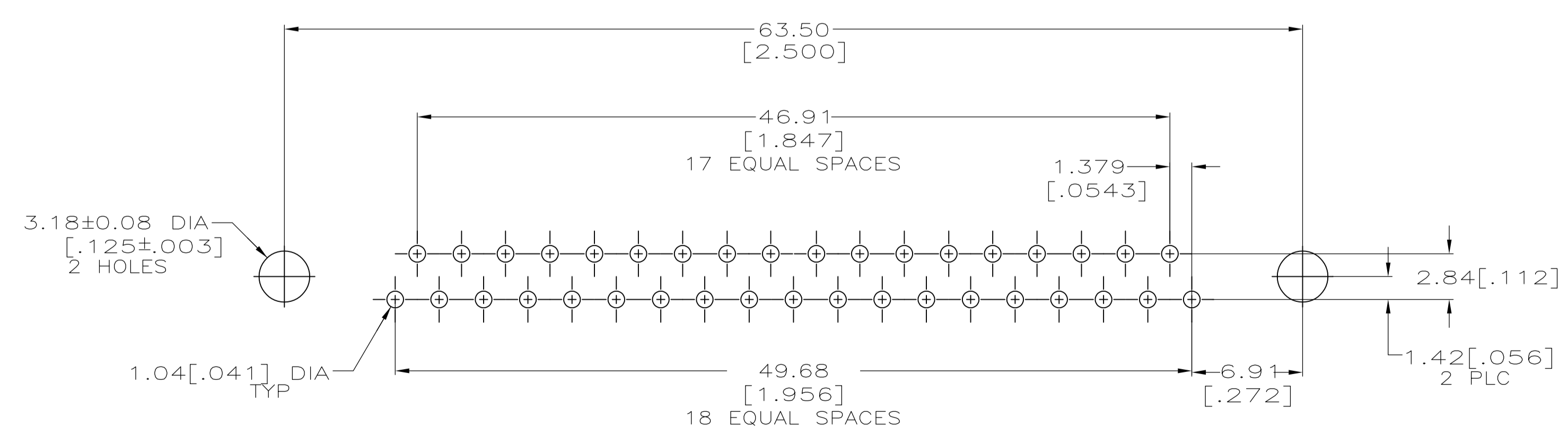
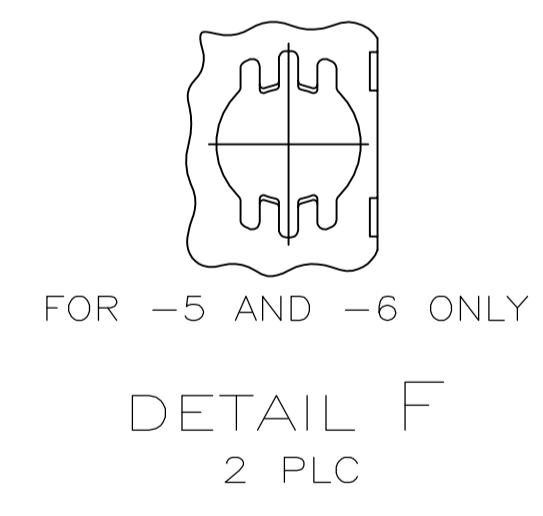
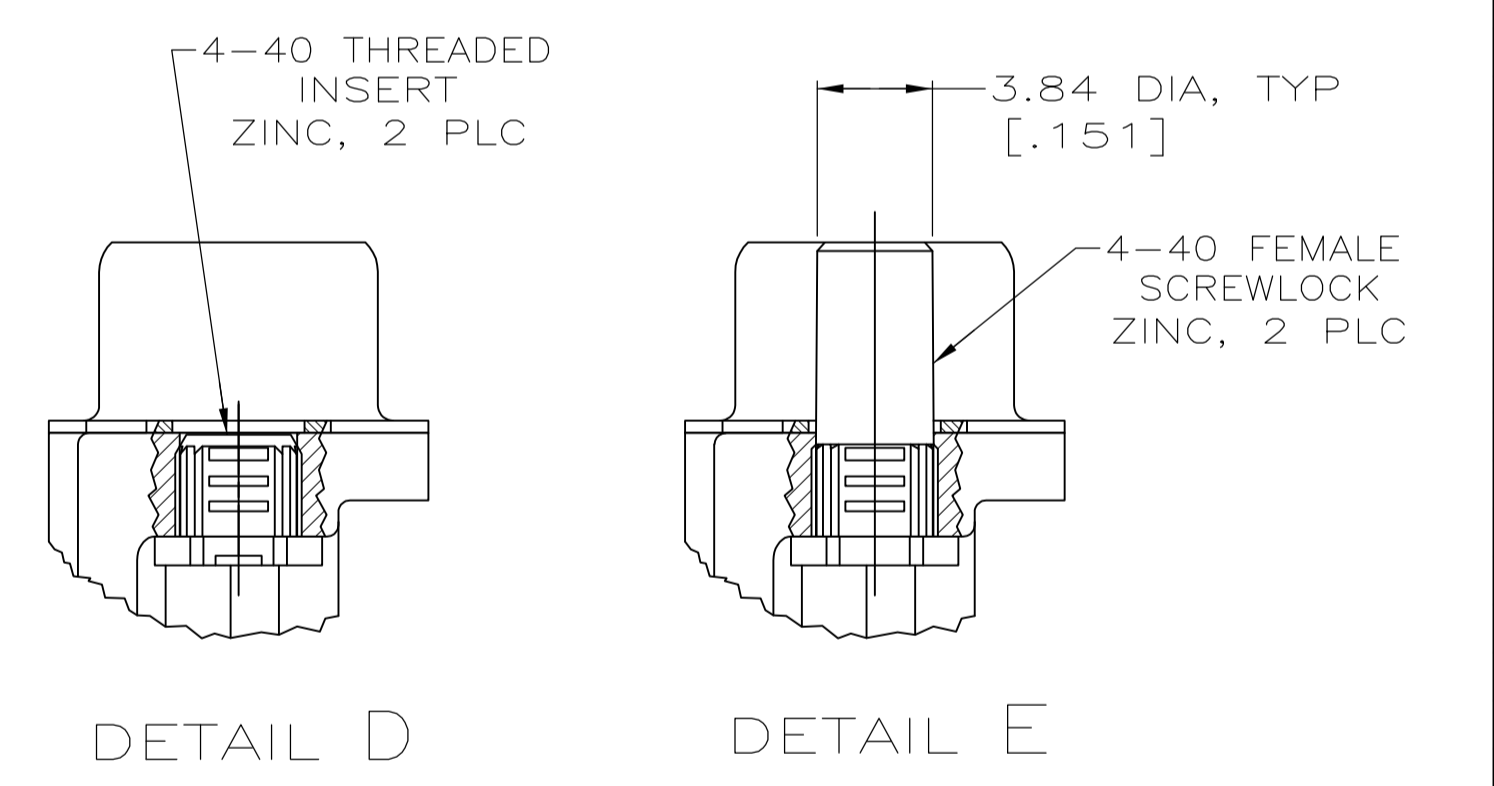
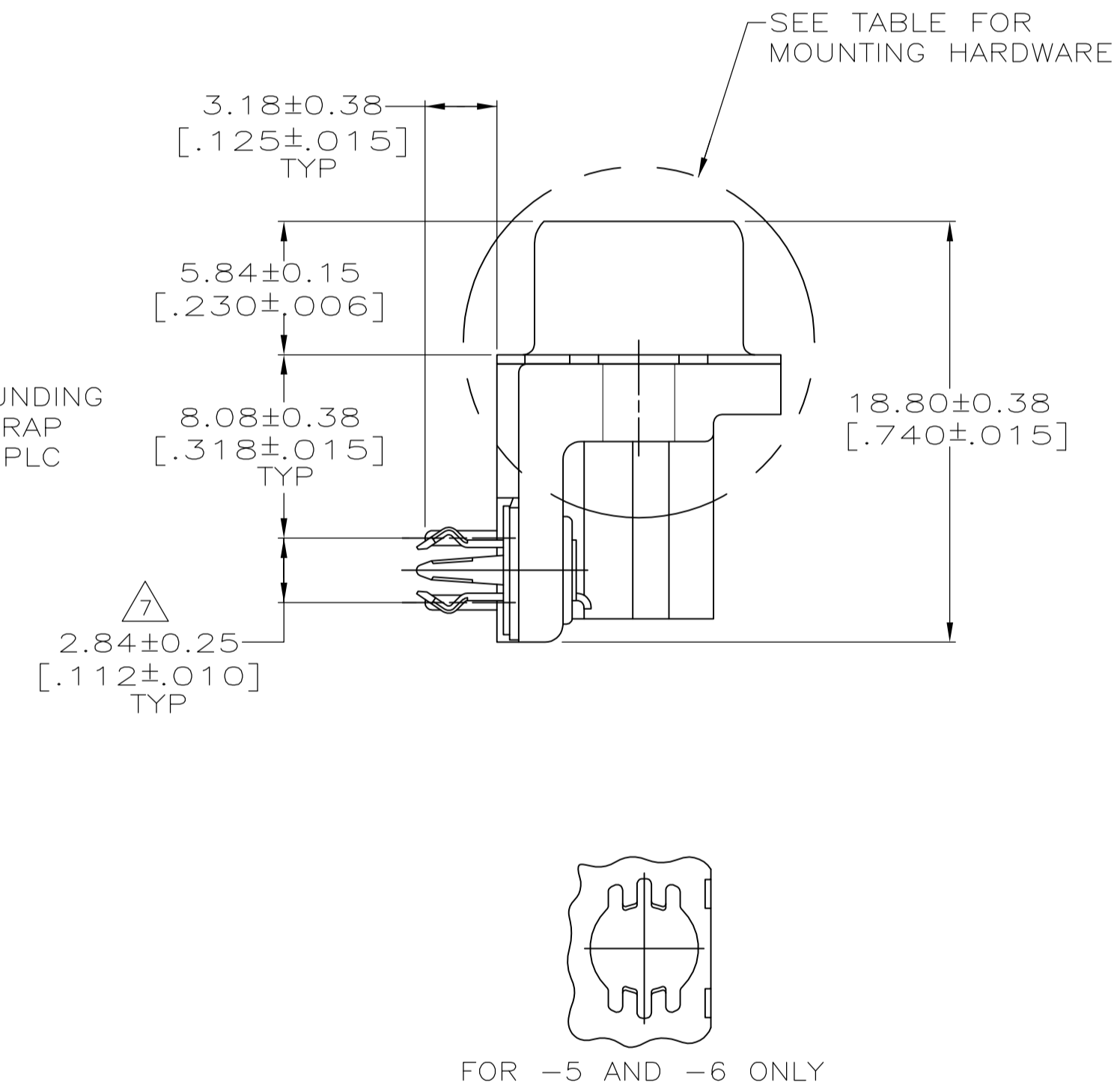
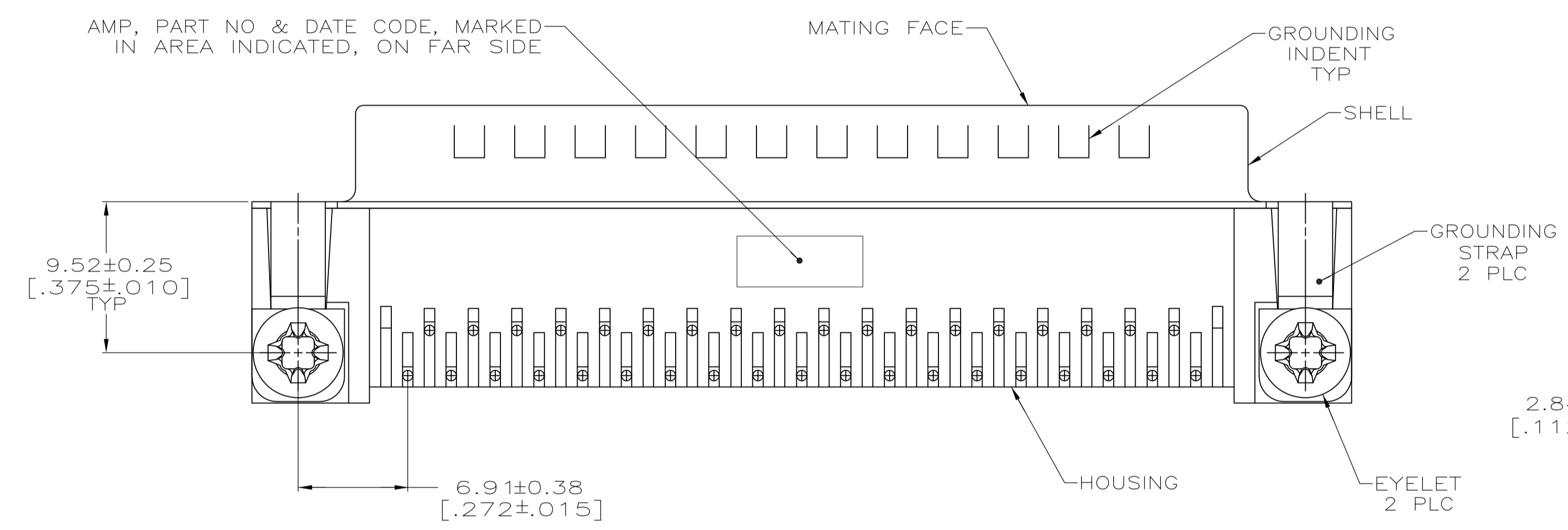


LOC		DIST		REVISIONS			
GP	00	REV	DATE	BY	CHK	APP	REV
S		REVISED PER ECO-07-00077	13FEB07	CJV			SB
S1		REVISED PER ECO-10-000443	15JAN10	KK			AEG



- ① HOUSING: NYLON OR POLYESTER, FLAME RETARDANT 94V-0 RATED, GLASS FILLED, BLACK
 SHELLS: CARBON STEEL
 CONTACTS: BRASS
 BOARDLOCKS: COPPER ALLOY
 EYELETS: BRASS
- ② SHELLS: 2.54μm [.000100] MIN TIN OVER 1.27μm [.000050] MIN COPPER.
 EYELETS: 5.08μm [.000200] MIN TIN OVER COPPER FLASH.
 CONTACTS AND BOARDLOCKS: SEE TABLE.
 INSERTS AND BOARDLOCKS: CLEAR CHROMATE.
- ③ GOLD PLATED FOR A LENGTH OF 3.81 [.150] MIN FROM MATING END, GOLD FLASH IN MATED AREA, 2.54μm [.000100] MIN TIN OR TIN-LEAD FOR A LENGTH OF 3.56 [.140] MIN FROM OPPOSITE END, BOTH OVER 1.27μm [.000050] MIN NICKEL.
- ④ GOLD PLATED FOR A LENGTH OF 3.81 [.150] MIN FROM MATING END, 0.76μm [.000030] MIN GOLD IN MATED AREA, 2.54μm [.000100] MIN TIN OR TIN-LEAD FOR A LENGTH OF 3.56 [.140] MIN FROM OPPOSITE END, BOTH OVER 1.27μm [.000050] MIN NICKEL.
 -OR-
 GOLD FLASH OVER PALLADIUM NICKEL PLATED FOR LENGTH OF 3.81 [.150] MIN FROM MATING END, 0.76μm [.000030] MIN PALLADIUM NICKEL IN MATED AREA, 2.54μm [.000100] MIN TIN OR TIN-LEAD FOR A LENGTH OF 3.56 [.140] MIN FROM OPPOSITE END, BOTH OVER 1.27μm [.000050] MIN NICKEL.
- ⑤ 5.08μm [.000200] MIN TIN-LEAD OVER 1.27μm [.000050] MIN NICKEL.
- ⑥ 5.08μm [.000200] MIN TIN OVER 1.27μm [.000050] MIN NICKEL.
- ⑦ DIMENSION APPLIES FROM CENTER OF CONTACTS.
- ⑧ OBSOLETE PARTS: OBSOLETE CIS STREAMLINING PER D.RENAUD/D.SINISI



RECOMMENDED P.C. BOARD MOUNTING DIMENSIONS
 P.C. BOARD THICKNESS: 1.57 [.062]

REV	DESCRIPTION	DATE	BY	CHK	APP	REV
⑧	SEE DETAIL E					-6-747843-9
⑧	SEE DETAIL D					-6-747843-8
	-					6-747843-7
	SEE DETAIL E					747843-6
⑧	SEE DETAIL E					747843-5
⑧	SEE DETAIL D					747843-4
⑧	SEE DETAIL D					747843-3
⑧	-					747843-2
⑧	-					747843-1

SUPERCEDED BY 5747843-3

REV	DESCRIPTION	DATE	BY	CHK	APP	REV
①	SEE DETAIL E					-6-747843-9
②	SEE DETAIL D					-6-747843-8
	-					6-747843-7
	SEE DETAIL E					747843-6
⑧	SEE DETAIL E					747843-5
⑧	SEE DETAIL D					747843-4
⑧	SEE DETAIL D					747843-3
⑧	-					747843-2
⑧	-					747843-1

THIS DRAWING IS A CONTROLLED DOCUMENT.

DIMENSIONS: mm [INCHES]	TOLERANCES UNLESS OTHERWISE SPECIFIED:	DWG: W.G. LENKER 05-OCT-89	REV: R. STONE 05-FEB-90	APPRO: M.D. GALLOWAY 06-FEB-90	NAME: M.D. GALLOWAY	PRODUCT SPEC: 108-40025	APPLICATION SPEC: 114-40010	SIZE: A1	SCALE: 4:1	SHEET: 1 OF 1	REV: S1
-------------------------	--	----------------------------	-------------------------	--------------------------------	---------------------	-------------------------	-----------------------------	----------	------------	---------------	---------

MATERIAL: ① FINISH: ②

THIS DRAWING IS A CONTROLLED DOCUMENT. W.G. LENKER 05-OCT-89 R. STONE 05-FEB-90 M.D. GALLOWAY 06-FEB-90

tyco Electronics Tyco Electronics Corporation Harrisburg, PA 17105-3608

RIGHT ANGLE, FRONT METAL SHELL, .318 SERIES, BOARDLOCKS, AMPLIMITE® HD-20

WEIGHT: -

CUSTOMER DRAWING