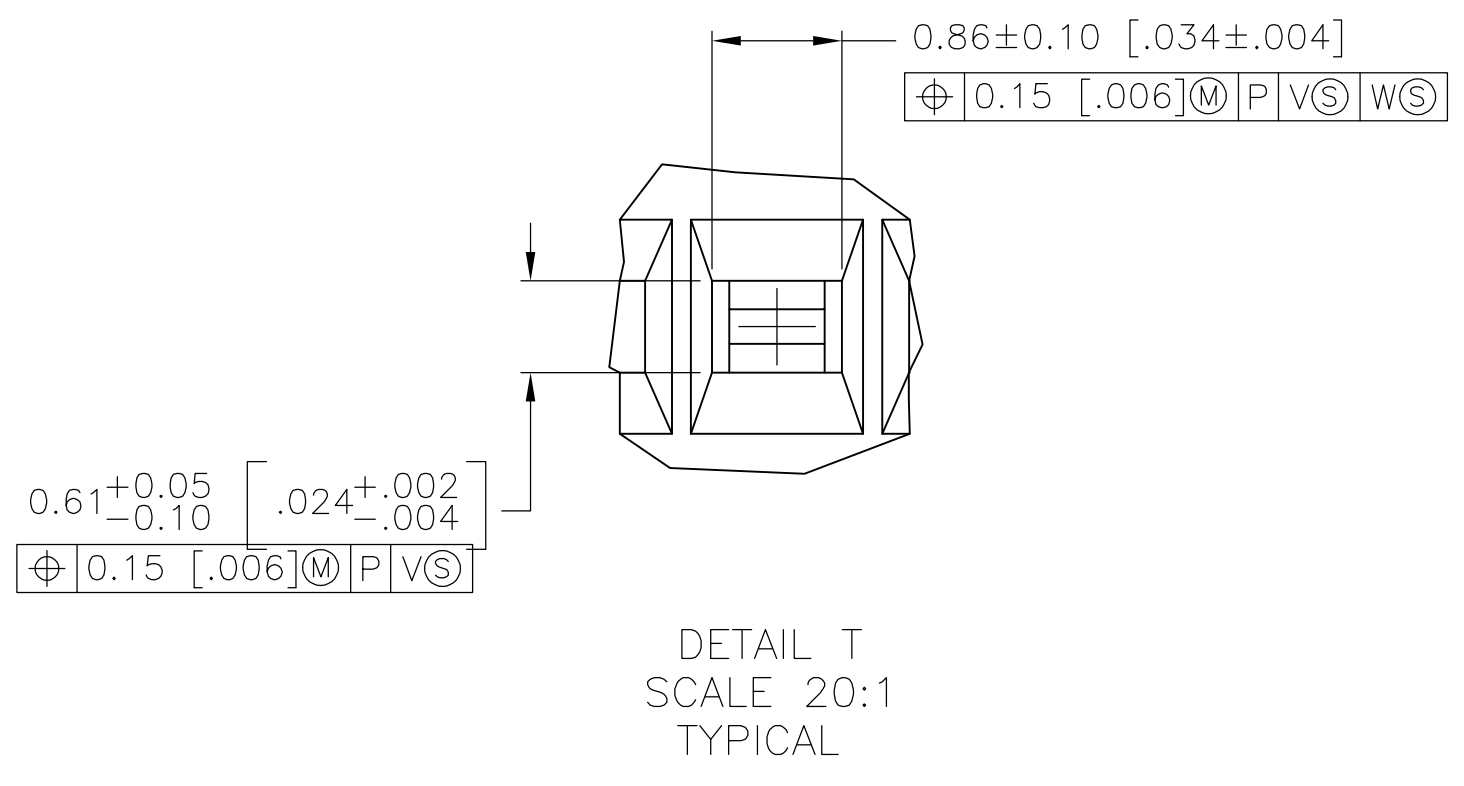
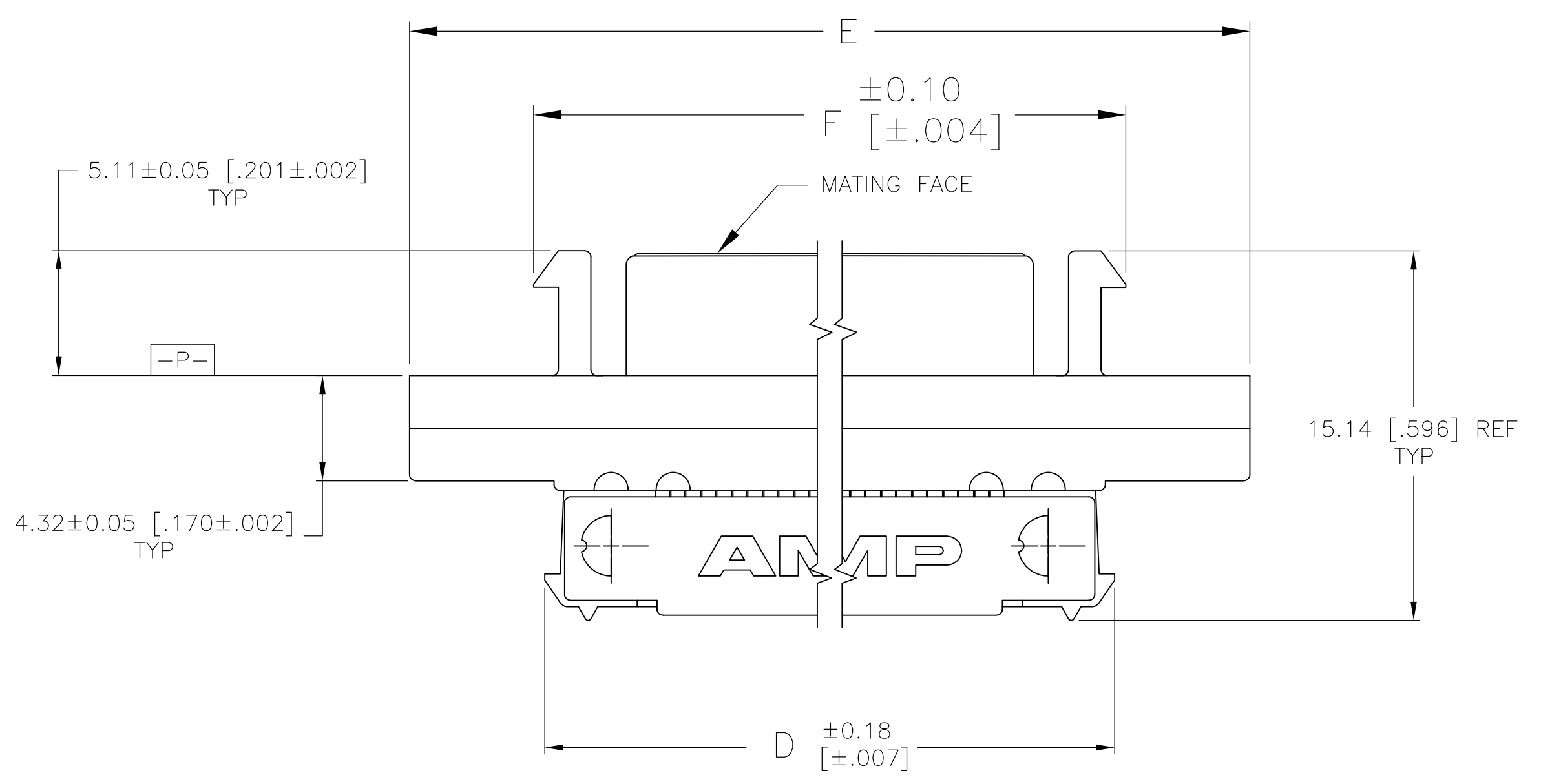
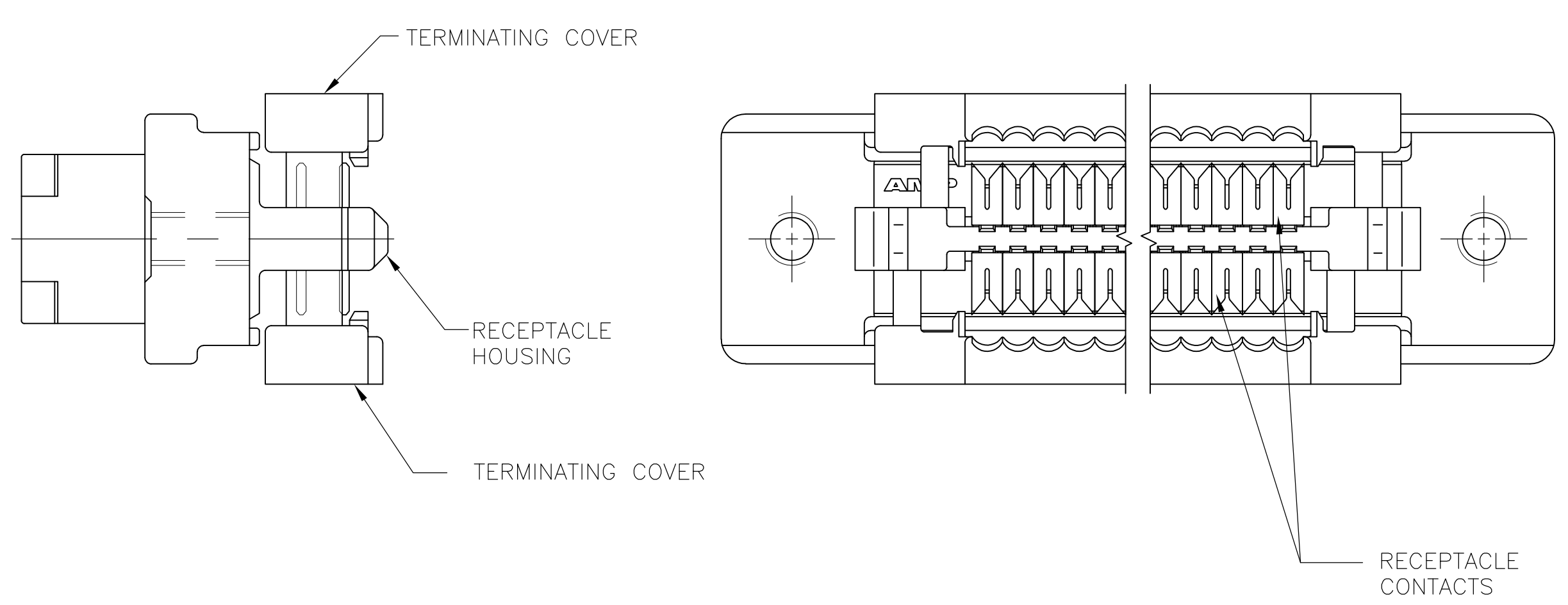
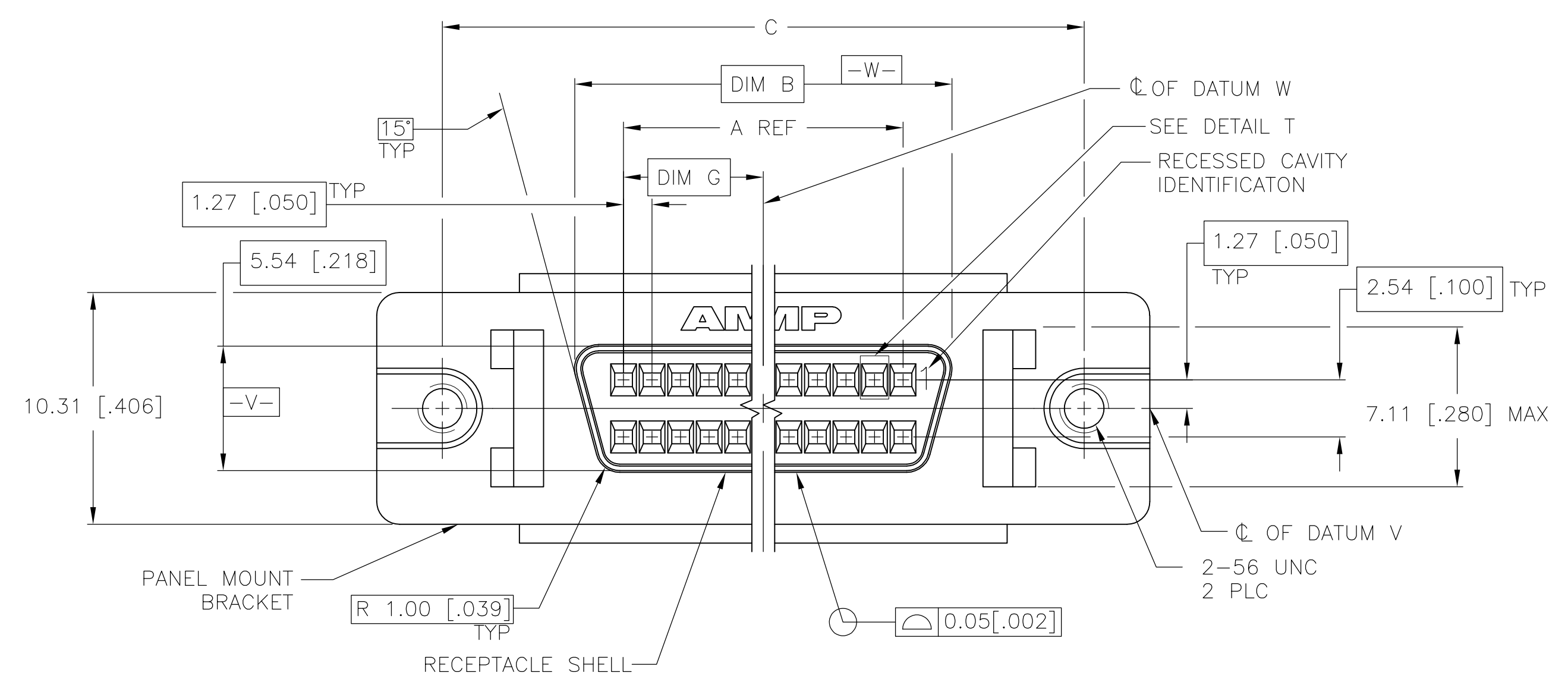


LOC		DIST		REVISIONS				
GP	00	REV	DATE	DESCRIPTION	DATE	BY	APPV	
R		REVISED PER ECO-09-013073	10JUN2009	ZMR	SLB			



- 1 MATERIAL:  
RECEPTACLE CONTACTS- PHOSPHOR BRONZE.  
RECEPTACLE SHELL- STEEL  
PANEL MOUNT BRACKET- ZINC.  
RECEPTACLE HOUSING AND TERMINATION COVERS- UL V-0 RATED THERMOPLASTIC, COLOR: BLACK.
- 2 PLATING:  
RECEPTACLE CONTACTS- EITHER 0.76µm [.000030] MIN GOLD PLATE OR GOLD FLASH OVER PALLADIUM NICKEL PLATE, 0.76µm [.000030] MIN TOTAL IN CONTACT AREA, 1.27µm [.000050] MIN TIN-LEAD IN TERMINATION AREA, ALL OVER 1.27µm [.000050] MIN NICKEL.  
RECEPTACLE SHELL- 5.08µm [.000200] MIN NICKEL OVER 1.27µm [.000050] MIN COPPER.  
PANEL MOUNT BRACKET- 5.08µm [.000200] MIN NICKEL OVER 7.62µm [.000300] MIN COPPER.
- 3 RECOMMENDED WIRE:  
28 AWG OR 30 AWG, SOLID OR 7 STRANDED, WITH A 0.74-0.91 [.029-.036] INSULATION DIA, OR AMP .050 CENTERLINE 28 AWG, STRANDED, PVC, FLAT GRAY RIBBON CABLE, WIRE MUST BE APPROVED BY AMP INCORPORATED.
- 4 OBSOLETE PART NUMBER.
- 5 PLATING:  
RECEPTACLE CONTACTS- EITHER 0.76µm [.000030] MIN GOLD PLATE OR GOLD FLASH OVER PALLADIUM NICKEL PLATE, 0.76µm [.000030] MIN TOTAL IN CONTACT AREA, 1.27µm [.000050] MIN TIN IN TERMINATION AREA, ALL OVER 1.27µm [.000050] MIN NICKEL.  
RECEPTACLE SHELL- 5.08µm [.000200] MIN NICKEL OVER 1.27µm [.000050] MIN COPPER.  
PANEL MOUNT BRACKET- 5.08µm [.000200] MIN NICKEL OVER 7.62µm [.000300] MIN COPPER.

NO	37.46	86.74	96.90	85.83	90.93	79.15	74.93	120	6-749656-0	
5	[1.475]	[3.415]	[3.815]	[3.379]	[3.580]	[3.116]	[2.950]			
NO	20.96	53.72	63.88	52.81	57.91	46.13	41.91	68	1-749656-2	
5	[.825]	[2.115]	[2.515]	[2.079]	[2.280]	[1.816]	[1.650]			
NO	15.24	42.29	52.45	41.38	46.48	34.70	30.48	50	1-749656-1	
5	[.600]	[1.665]	[2.065]	[1.629]	[1.830]	[1.366]	[1.200]			
NO	37.46	86.74	96.90	85.83	90.93	79.15	74.93	120	1-749656-0	
2	[1.475]	[3.415]	[3.815]	[3.379]	[3.580]	[3.116]	[2.950]			
NO	31.12	74.04	84.20	73.13	78.23	66.45	62.23	100	5 749656-9	
2	[1.225]	[2.915]	[3.315]	[2.879]	[3.080]	[2.616]	[2.450]			
NO	24.76	61.34	71.50	60.43	65.53	53.75	49.53	80	5 749656-8	
2	[.975]	[2.415]	[2.815]	[2.379]	[2.580]	[2.116]	[1.950]			
NO	20.96	53.72	63.88	52.81	57.91	46.13	41.91	68	749656-7	
2	[.825]	[2.115]	[2.515]	[2.079]	[2.280]	[1.816]	[1.650]			
NO	18.42	48.64	58.80	47.73	52.83	41.05	36.83	60	5 749656-6	
2	[.725]	[1.915]	[2.315]	[1.879]	[2.080]	[1.616]	[1.450]			
NO	15.24	42.29	52.45	41.38	46.48	34.70	30.48	50	749656-5	
2	[.600]	[1.665]	[2.065]	[1.629]	[1.830]	[1.366]	[1.200]			
NO	12.06	35.94	46.10	35.03	40.13	28.35	24.13	40	5 749656-4	
2	[.475]	[1.415]	[1.815]	[1.379]	[1.580]	[1.116]	[.950]			
NO	8.26	28.32	38.48	27.41	32.51	20.73	16.51	28	5 749656-3	
2	[.325]	[1.115]	[1.515]	[1.079]	[1.280]	[.816]	[.650]			
NO	5.72	23.24	33.40	22.33	27.43	15.65	11.43	20	5 749656-2	
2	[.225]	[.915]	[1.315]	[.879]	[1.080]	[.616]	[.450]			
NO	7.62	27.05	37.21	26.14	31.24	19.46	15.24	26	5 749656-1	
2	[.300]	[1.065]	[1.465]	[1.029]	[1.230]	[.766]	[.600]			
FINISH	DATE CODE	G	F	E	D	C	B	A	NO OF POSN	PART NO

THIS DRAWING IS A CONTROLLED DOCUMENT.

DIMENSIONS: mm [INCHES]

TOLERANCES UNLESS OTHERWISE SPECIFIED:

0. PLC	±	-
1. PLC	±	-
2. PLC	±	0.13 [005]
3. PLC	±	-
4. PLC	±	-
ANGLES	±	-

MATERIAL: 1 SEE TABLE

APPROVED: M. MCCAFFREY 08/25/89, J. BROSHARD 09/05/89, R. WHITEMAN 10/24/89

NAME: Tyco Electronics Corporation, Harrisburg, Pa 17105-3608

PRODUCT SPEC: RECEPTACLE CABLE ASSEMBLY, RAILLESS, PANEL MOUNT, AMPLIMITE .050 Series

APPLICATION SPEC: 108-1228

SIZE: A1

WEIGHT: 114-40029

SCALE: 5:1

SHEET: 1 of 1

REV: R