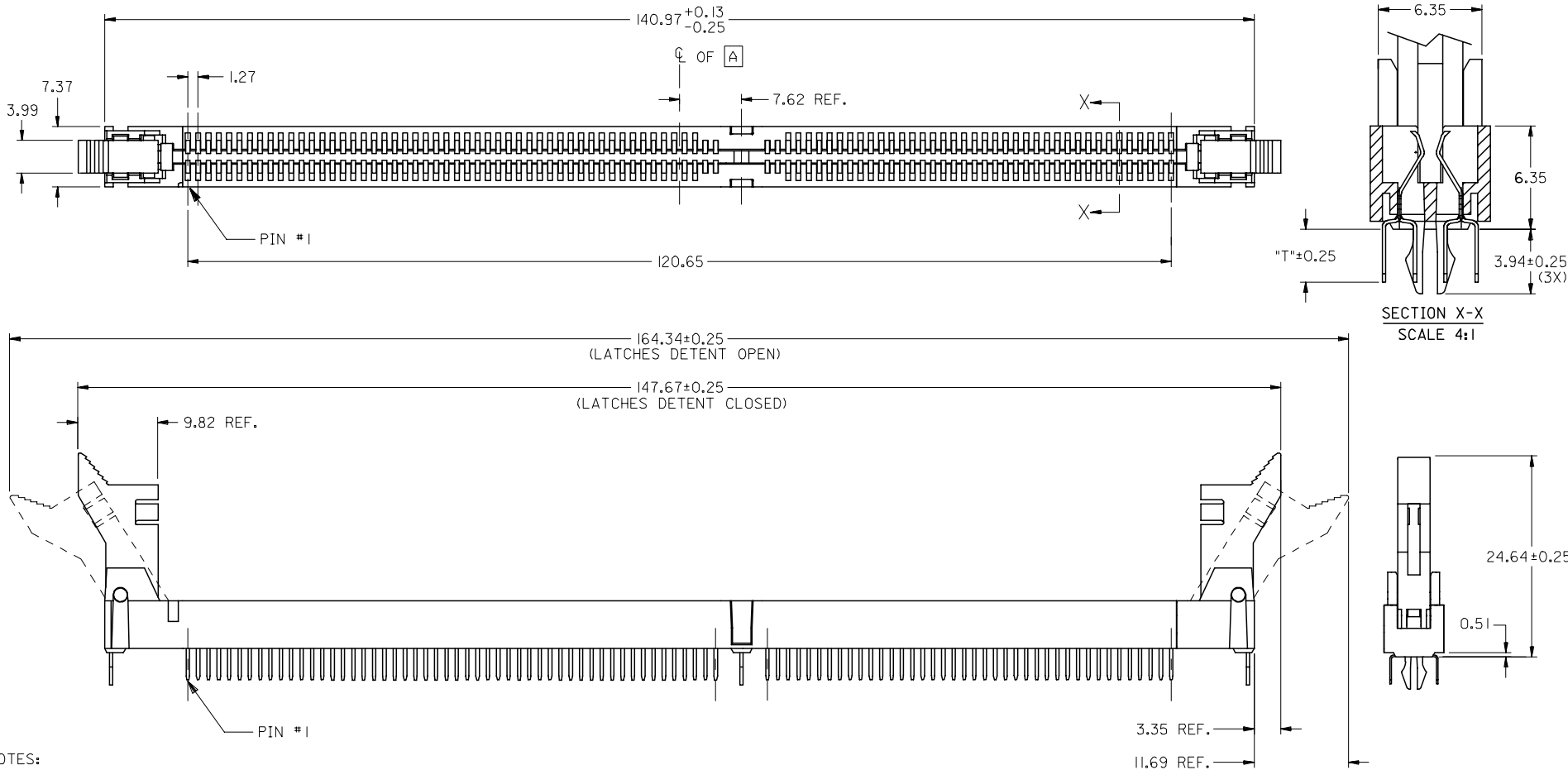


10 9 8 7 6 5 4 3 2 1



NOTES:

1. CARD SLOT ACCEPTS 1.27±0.10 MM MODULE THICKNESS. (MEASURED OVER P.C. PADS).
2. REFER TO PRODUCT SPEC. PS-87736-003 FOR PERFORMANCE SPECIFICATIONS.
3. RECOMMENDED MODULE LAYOUT SHALL BE PER M0-206.
4. RECOMMENDED PLATING ON MODULE PADS: 0.76 μM MIN HARD GOLD (Au) OVER 2.0 μM MIN NICKEL (Ni).
5. PRODUCT WILL HAVE DATE CODE STAMPED ON SIDE OF HOUSING.

MATERIALS:  
 HOUSING - HIGH TEMP THERMOPLASTIC  
 TERMINAL- PHOSPHOR BRONZE  
 LATCHES - HIGH TEMP THERMOPLASTIC

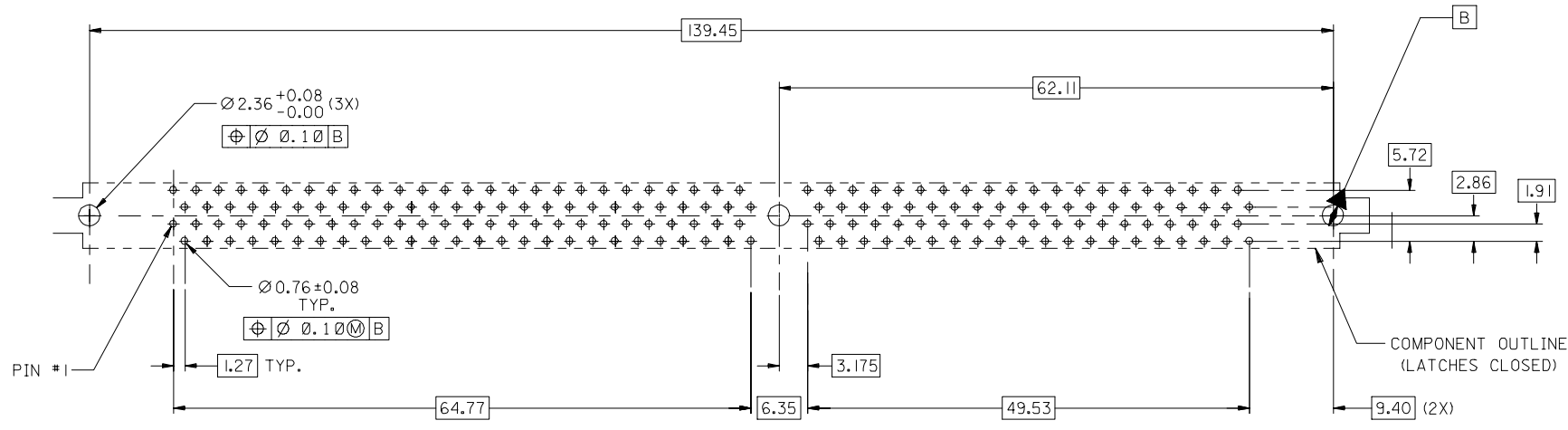
PLATING:  
 CONTACT AREA: SEE TABLE IN SHEET 2.  
 SOLDER TAILS: TIN/LEAD OR TIN :THICKNESS=1.91 μM/(75 μIN) MIN.  
 UNDERPLATE: 1.27 μM/(50 μIN) MIN NICKEL (Ni).

ADD ASSY P/N FOR LF EC NO: S2005-0107 2004/08/18 DRAWN: JIAN 2004/08/18 CHKD: ATSEE 2004/08/18 APPR: SKTOH	DESCRIPTION 2004/08/18	QUALITY SYMBOLS	GENERAL TOLERANCES (UNLESS SPECIFIED)	DIMENSION STYLE	SCALE	DESIGN UNITS	THIRD ANGLE PROJECTION	
		▽=0 ∇=0	mm    INCH 4 PLACES ± --- ± --- 3 PLACES ± --- ± --- 2 PLACES ± 0.15 ± --- 1 PLACE ± --- ± --- ANGULAR ± 3 °	MM ONLY	NTS	METRIC	DRAWN BY    DATE MLONG        2000/05/10 CHECKED BY    DATE SQUEK         2000/05/11 APPROVED BY    DATE SKTOH          2000/05/12	TITLE SALES DRAWING DDR DIMM, 1.27MM PITCH 184 CKTS, SINGLE KEY
		DRAFT WHERE APPLICABLE MUST REMAIN WITHIN DIMENSIONS	SEE TABLE	MATERIAL NO. SKTOH	DOCUMENT NO. SD-87636-001	SHEET NO. 1 OF 4		
		THIS DRAWING CONTAINS INFORMATION THAT IS PROPRIETARY TO MOLEX INCORPORATED AND SHOULD NOT BE USED WITHOUT WRITTEN PERMISSION						

9 8 7 6 5 4 3 2 1

10 9 8 7 6 5 4 3 2 1

F  
E  
D  
C  
B  
A



RECOMMENDED P.C. BOARD HOLE PATTERN  
(CONNECTOR SIDE)

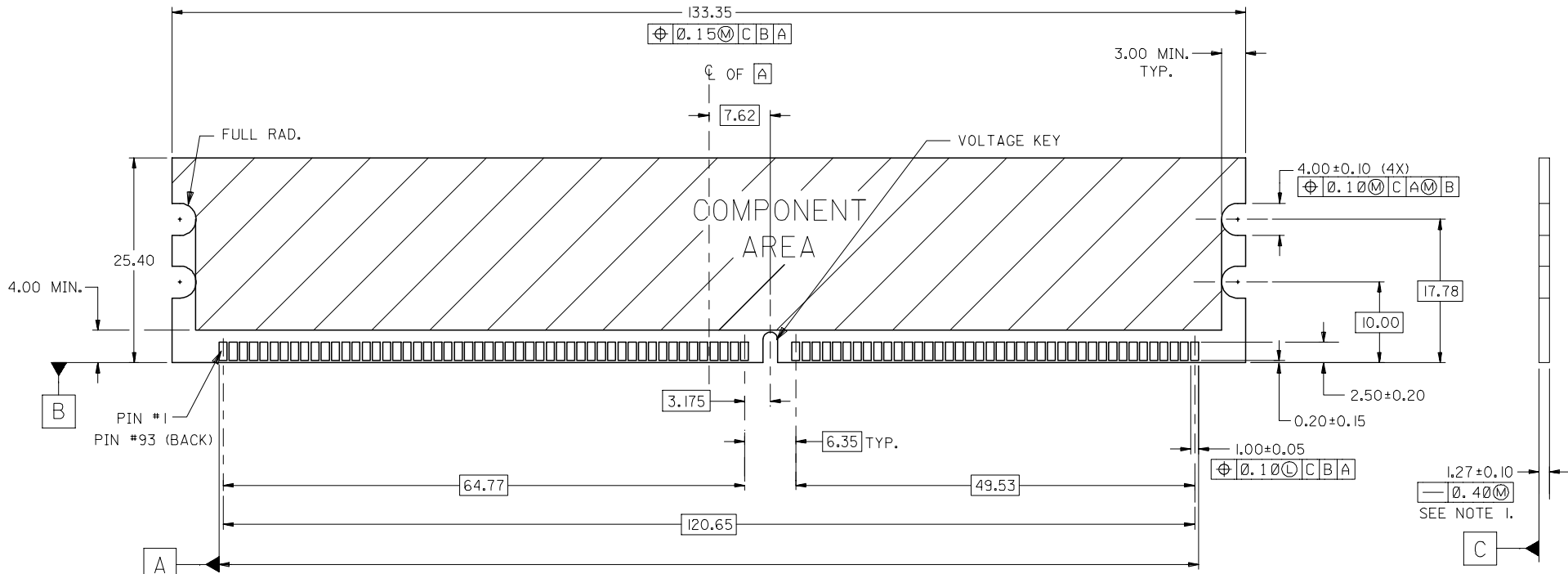
ADD ASSY P/N FOR LF EC NO: S2005-0107 DRAWN: JAN 2004/08/18 CHKD: ATSEE 2004/08/18 APPR: SKTOH 2004/08/18	DESCRIPTION REV	QUALITY SYMBOLS	GENERAL TOLERANCES (UNLESS SPECIFIED)		DIMENSION STYLE MM ONLY		SCALE NTS	DESIGN UNITS METRIC	THIRD ANGLE PROJECTION													
		$\nabla = 0$ $\sphericalcap = 0$	<table border="1"> <tr> <td></td> <td>mm</td> <td>INCH</td> </tr> <tr> <td>4 PLACES</td> <td>± ---</td> <td>± ---</td> </tr> <tr> <td>3 PLACES</td> <td>± ---</td> <td>± ---</td> </tr> <tr> <td>2 PLACES</td> <td>± 0.15</td> <td>± ---</td> </tr> <tr> <td>1 PLACE</td> <td>± ---</td> <td>± ---</td> </tr> </table>		mm	INCH	4 PLACES	± ---	± ---	3 PLACES	± ---	± ---	2 PLACES	± 0.15	± ---	1 PLACE	± ---	± ---	DRAWN BY MLONG DATE 2000/05/10		TITLE SALES DRAWING DDR DIMM, 1.27MM PITCH 184 CKTS, SINGLE KEY	
			mm	INCH																		
		4 PLACES	± ---	± ---																		
3 PLACES	± ---	± ---																				
2 PLACES	± 0.15	± ---																				
1 PLACE	± ---	± ---																				
DRAFT WHERE APPLICABLE MUST REMAIN WITHIN DIMENSIONS	APPROVED BY SKTOH DATE 2000/05/12		MOLEX INCORPORATED DOCUMENT NO. SD-87636-001		SHEET NO. 2 OF 4																	
SIZE A3					THIS DRAWING CONTAINS INFORMATION THAT IS PROPRIETARY TO MOLEX INCORPORATED AND SHOULD NOT BE USED WITHOUT WRITTEN PERMISSION																	

9 8 7 6 5 4 3 2 1

	10	9	8	7	6	5	4	3	2	1		
		PLATING OPTION	PART NUMBER	DATUM VOLTAGE KEY	PACKAGING TYPE	DIM *T*	RECOMMENDED PCB THICKNESS	LATCH COLOR	CONTACT AREA PLATING			
F		TIN/LEAD	87636-0001	CENTER (1.8V)	TRAY	3.23	2.36	BEIGE	0.38μM/15μIN MIN. GOLD			
	87636-0002		LEFT (2.5V)	1.57								
	87636-0011		CENTER (1.8V)			2.36						
	87636-0012		LEFT (2.5V)	1.57								
E			87636-1001			CENTER (1.8V)	TRAY		3.23	2.36	BLACK	0.76μM/30μIN MIN. GOLD
	87636-1002		LEFT (2.5V)	2.67		1.57						
	87636-1011		CENTER (1.8V)						3.23	2.36		
	87636-1012		LEFT (2.5V)	2.67		1.57						
	87636-0102	LEFT (2.5V)										
D		TIN	87636-2001	CENTER (1.8V)	TRAY	3.23	2.36	BEIGE	0.38μM/15μIN MIN. GOLD			
	87636-2002		LEFT (2.5V)	1.57								
	87636-2011		CENTER (1.8V)			2.36						
	87636-2012		LEFT (2.5V)	1.57								
	87636-3001		CENTER (1.8V)			TRAY	3.23		2.36	BLACK	0.76μM/30μIN MIN. GOLD	
	87636-3002		LEFT (2.5V)	2.67					1.57			
	87636-3011		CENTER (1.8V)				3.23				2.36	
C			87636-3012	LEFT (2.5V)					2.67			1.57
	87636-2102	LEFT (2.5V)										

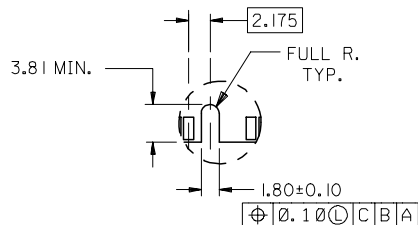
ADD ASSY P/N FOR L/F EC NO: S2005-0107 DRAWN: JIAN CHKD: ATSEE APPR: SKTOH	2004/08/18 2004/08/18 2004/08/18	DESCRIPTION REV	QUALITY SYMBOLS	GENERAL TOLERANCES (UNLESS SPECIFIED)	DIMENSION STYLE	SCALE	DESIGN UNITS	THIRD ANGLE PROJECTION																		
			$\nabla = 0$ $\sphericalcap = 0$	<table border="1"> <thead> <tr> <th></th> <th>mm</th> <th>INCH</th> </tr> </thead> <tbody> <tr> <td>4 PLACES</td> <td>± ---</td> <td>± ---</td> </tr> <tr> <td>3 PLACES</td> <td>± ---</td> <td>± ---</td> </tr> <tr> <td>2 PLACES</td> <td>± 0.15</td> <td>± ---</td> </tr> <tr> <td>1 PLACE</td> <td>± ---</td> <td>± ---</td> </tr> <tr> <td colspan="3">ANGULAR ± 1 °</td> </tr> </tbody> </table>		mm	INCH	4 PLACES	± ---	± ---	3 PLACES	± ---	± ---	2 PLACES	± 0.15	± ---	1 PLACE	± ---	± ---	ANGULAR ± 1 °			MM ONLY	NTS	METRIC	
				mm	INCH																					
			4 PLACES	± ---	± ---																					
3 PLACES	± ---	± ---																								
2 PLACES	± 0.15	± ---																								
1 PLACE	± ---	± ---																								
ANGULAR ± 1 °																										
			<table border="1"> <tr> <td>DRAWN BY</td> <td>DATE</td> <td>TITLE</td> </tr> <tr> <td>MLONG</td> <td>2000/05/10</td> <td rowspan="4">           SALES DRAWING            DDR DIMM, 1.27MM PITCH            184 CKTS, SINGLE KEY            MOLEX INCORPORATED         </td> </tr> <tr> <td>CHECKED BY</td> <td>DATE</td> </tr> <tr> <td>SQUEK</td> <td>2000/05/11</td> </tr> <tr> <td>APPROVED BY</td> <td>DATE</td> </tr> <tr> <td>SKTOH</td> <td>2000/05/12</td> <td> </td> </tr> </table>	DRAWN BY	DATE	TITLE	MLONG	2000/05/10	SALES DRAWING DDR DIMM, 1.27MM PITCH 184 CKTS, SINGLE KEY MOLEX INCORPORATED	CHECKED BY	DATE	SQUEK	2000/05/11	APPROVED BY	DATE	SKTOH	2000/05/12									
DRAWN BY	DATE	TITLE																								
MLONG	2000/05/10	SALES DRAWING DDR DIMM, 1.27MM PITCH 184 CKTS, SINGLE KEY MOLEX INCORPORATED																								
CHECKED BY	DATE																									
SQUEK	2000/05/11																									
APPROVED BY	DATE																									
SKTOH	2000/05/12																									
			DRAFT WHERE APPLICABLE MUST REMAIN WITHIN DIMENSIONS	SEE TABLE	DOCUMENT NO.	SHEET NO.																				
					SD-87636-001	3 OF 4																				

10 9 8 7 6 5 4 3 2 1

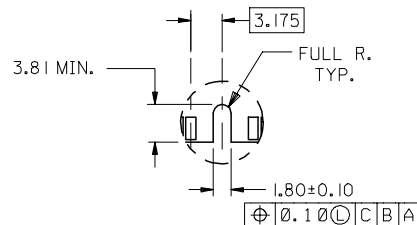


(OUTSIDE EDGE OF END PADS)

RECOMMENDED MODULE LAYOUT  
184 CKT 1.8V SHOWN



OFFSET LEFT KEY



CENTERED KEY

**NOTES:**

1. STRAIGHTNESS OF MODULE APPLIES TO THE AREA FROM THE BOTTOM OF THE CARD UP 4.00 MM.
2. IF TIE BARS ARE ATTACHED TO PADS, THE TIE BAR SHOULD BE ON AN INTERNAL LAYER, SO THAT THE REMNANT CANNOT CAUSE DAMAGE TO THE CONTACTS.

ADD ASSY P/N FOR LF EC NO: S2005-0107 DRAWN: JIAN CHKD: ATSEE APPR: SKTOH	2004/08/18 2004/08/18 2004/08/18	DESCRIPTION REV	QUALITY SYMBOLS	GENERAL TOLERANCES (UNLESS SPECIFIED)	DIMENSION STYLE	SCALE	DESIGN UNITS	THIRD ANGLE PROJECTION
			▼=0 ▽=0	mm    INCH 4 PLACES ± --- ± --- 3 PLACES ± --- ± --- 2 PLACES ± 0.15 ± --- 1 PLACE ± --- ± --- ANGULAR ± 1 °	MM ONLY	NTS	METRIC	TITLE SALES DRAWING DDR DIMM, 1.27MM PITCH 184 CKTS, SINGLE KEY MOLEX INCORPORATED
				DRAFT WHERE APPLICABLE MUST REMAIN WITHIN DIMENSIONS	DRAWN BY: MLONG CHECKED BY: SQUEK APPROVED BY: SKTOH MATERIAL NO.	DATE: 2000/05/10 DATE: 2000/05/11 DATE: 2000/05/12	DOCUMENT NO. SD-87636-001	
				SEE TABLE	SHEET NO. 4 OF 4			

9 8 7 6 5 4 3 2 1