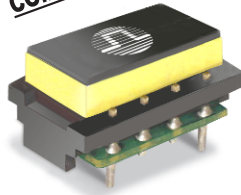








XDSL SPLITTER FILTER MODULE

SmartER series



-  ISDN CO splitter for standard ADSL / VDSL2 applications
-  LPF compliant with ETSI specification TS 101-952-1-3, v1.1.1 for both 2B1Q and 4B3T applications
-  Part of a standard series which has footprint compatibility
-  For ADSL, ADSL2+, VDSL and VDSL2 applications
-  RoHS-6 compatible
-  Patented technology

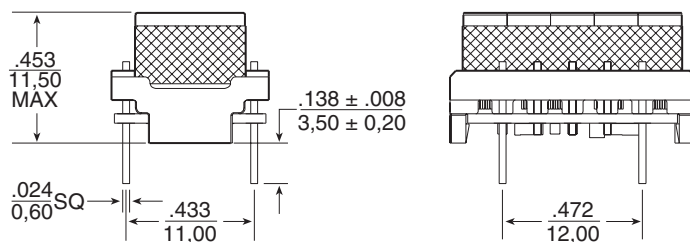
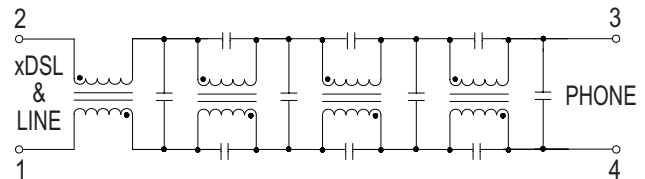
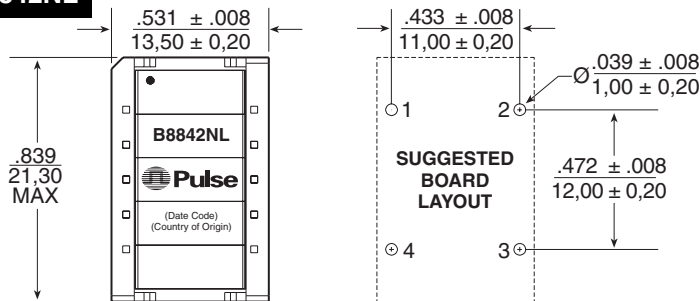
Electrical Specifications @ 25°C

PARAMETER	FREQUENCY	
ISDN Impedance	1kHz to 80kHz	135Ω & 150Ω
	1kHz to 40kHz	0.8dB MAX
ISDN Insertion Loss 2B1Q	40kHz to 80kHz	2.0dB MAX
	1kHz to 40kHz	16dB MIN
ISDN Return Loss 2B1Q	40kHz to 80kHz	14dB MIN
	1kHz to 60kHz	0.8dB MAX
ISDN Insertion Loss 4B3T	60kHz to 80kHz	2.0dB MAX
	1kHz to 60kHz	16dB MIN
ISDN Return Loss 4B3T	60kHz to 80kHz	14dB MIN
	30kHz to 85kHz	-46dB MIN
Longitudinal Balance	120kHz to 1.1MHz	-46dB MIN
	1.1MHz to 30MHz	-45dB MIN
	150kHz to 1.1MHz	65dB MIN
xDSL Insertion Loss	1.1MHz to 30MHz	55dB MIN
		60mA MAX
DC Current		4.8Ω MAX
Total DC Resistance		

Mechanical

Schematic

B8842NL



Weight 8.0 grams
 Tray80/tray
 Dimensions: $\frac{\text{Inches}}{\text{mm}}$
 Unless otherwise specified,
 all tolerances are $\pm \frac{.010}{0.25}$

For More Information:

Pulse Worldwide Headquarters

12220 World Trade Dr.
 San Diego, CA 92128
 U.S.A.
www.pulseeng.com

Tel: 858 674 8100
 Fax: 858 674 8262

Pulse Europe

Einsteinstrasse 1
 D-71083 Herrenberg
 Germany

Tel: 49 7032 7806 0
 Fax: 49 7032 7806 12

Pulse China Headquarters

B402, Shenzhen
 Tech-Innovation International
 Tenth Kejian Rd.
 High-Tech Industrial Park
 Nanshan District, Shenzhen
 China

Tel: 86 755 33966678
 Fax: 86 755 33966700

Pulse North China

Room 1503
 XinYin Building
 No. 888 YiShan Rd.
 Shanghai 200233
 China

Tel: 86 21 54643211/2
 Fax: 86 21 54643210

Pulse South Asia

150 Kampong Ampat
 #07-01/02
 KA Centre
 Singapore 368324

Tel: 65 6287 8998
 Fax: 65 6280 0080

Pulse North Asia

No. 26
 Kao Ching Rd.
 Yang Mei Chen
 Tao Yuan Hsien
 Taiwan, R. O. C.

Tel: 886 3 4641811
 Fax: 886 3 4641911

Performance warranty of products offered on this data sheet is limited to the parameters specified. Data is subject to change without notice. Other brand and product names mentioned herein may be trademarks or registered trademarks of their respective owners. © Copyright, 2007. Pulse Engineering, Inc. All rights reserved.