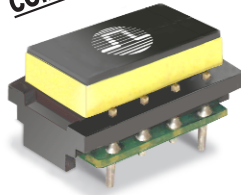








XDSL SPLITTER FILTER MODULE

SmartER series



-  POTS and ISDN CO splitter for standard ADSL / VDSL2 applications
-  LPF compliant with ETSI specification TS 101-952-1-4, v1.1.1 matched to DT Complex Impedance ($Z_R = 220\Omega + 820\Omega/115nF$) and ISDN 4B3T
-  Part of a standard series which has footprint compatibility
-  For ADSL, ADSL2+, VDSL and VDSL2 applications
-  RoHS-6 compatible
-  Patented technology

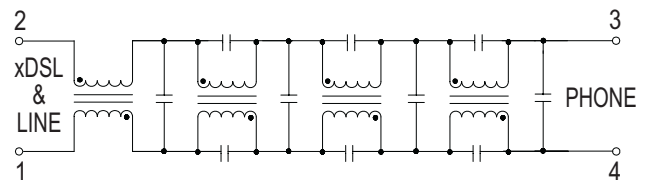
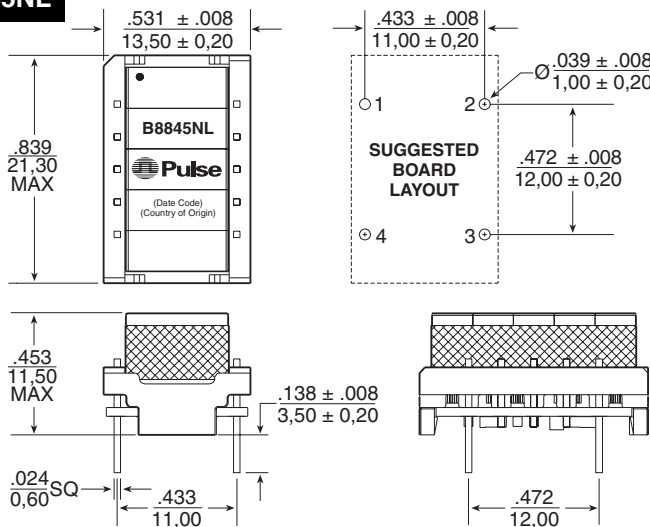
Electrical Specifications @ 25°C

PARAMETER	FREQUENCY	
ISDN Impedance	1kHz to 80kHz	150Ω
ISDN Insertion Loss	1kHz to 60kHz	1.2dB MAX
	60kHz to 80kHz	2.0dB MAX
ISDN Return Loss	1kHz to 60kHz	16dB MIN
	60kHz to 80kHz	14dB MIN
POTS Impedance	200Hz to 4kHz	($Z_R = 220\Omega + 820\Omega/115nF$)
POTS Insertion Loss	@ 1kHz	1.0dB MAX
POTS Insertion Loss Distortion	200Hz to 4kHz	1.0dB MAX
POTS Return Loss	300Hz to 1.6kHz	15dB MIN
	1.6kHz to 3.4kHz	12dB MIN
Longitudinal Balance	30kHz to 85kHz	50dB MIN
	120kHz to 1.1MHz	50dB MIN
	1.1MHz to 30MHz	30dB MIN
xDSL Insertion Loss	150kHz to 1.1MHz	65dB MIN
	1.1MHz to 30MHz	55dB MIN
DC Current		80mA MAX
Total DC Resistance		5.8Ω MAX

Mechanical

Schematic

B8845NL



Weight 8.0 grams
 Tray80/tray
 Dimensions: $\frac{\text{Inches}}{\text{mm}}$
 Unless otherwise specified,
 all tolerances are $\pm \frac{.010}{0,25}$

For More Information:

Pulse Worldwide Headquarters

12220 World Trade Dr.
 San Diego, CA 92128
 U.S.A.
www.pulseeng.com

Tel: 858 674 8100
 Fax: 858 674 8262

Pulse Europe

Einsteinstrasse 1
 D-71083 Herrenberg
 Germany

Tel: 49 7032 7806 0
 Fax: 49 7032 7806 12

Pulse China Headquarters

B402, Shenzhen Academy of
 Aerospace Technology Building
 10th Kejinan Rd.
 High-Tech Zone
 Nanshan District, Shenzhen
 P.R. China 518057

Tel: 86 755 33966678
 Fax: 86 755 33966700

Pulse North China

Room 1503
 XinYin Building
 No. 888 YiShan Rd.
 Shanghai 200233
 China

Tel: 86 21 32181071
 Fax: 86 21 32181396

Pulse South Asia

150 Kampong Ampat
 #07-01/02
 KA Centre
 Singapore 368324

Tel: 65 6287 8998
 Fax: 65 6280 0080

Pulse North Asia

No. 26
 Kao Ching Rd.
 Yang Mei Chen
 Taoyuan Hsien
 Taiwan, R. O. C.
 32667

Tel: 886 3 4643715
 Fax: 886 3 4641911

Performance warranty of products offered on this data sheet is limited to the parameters specified. Data is subject to change without notice. Other brand and product names mentioned herein may be trademarks or registered trademarks of their respective owners. © Copyright, 2008. Pulse Engineering, Inc. All rights reserved.