

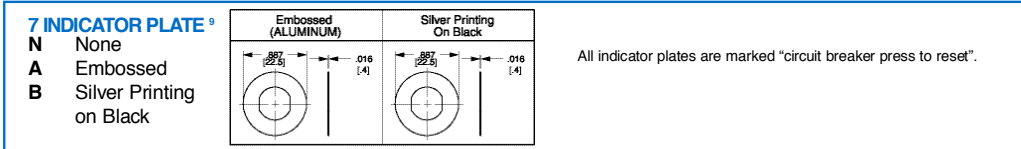
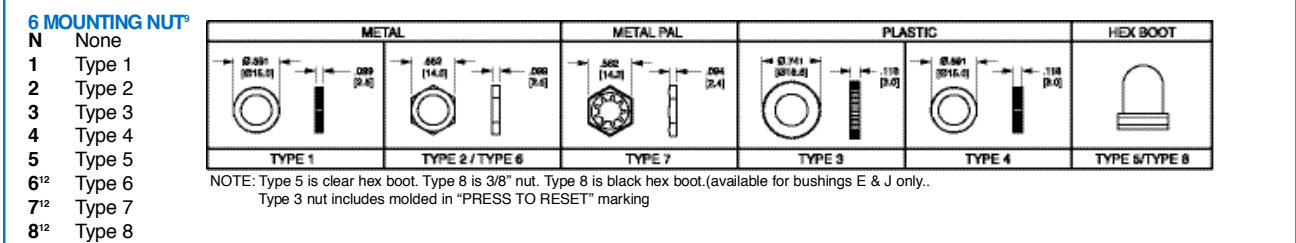
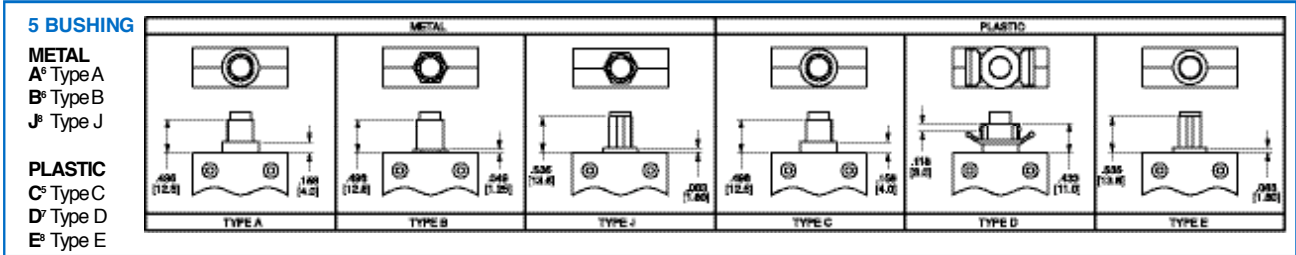
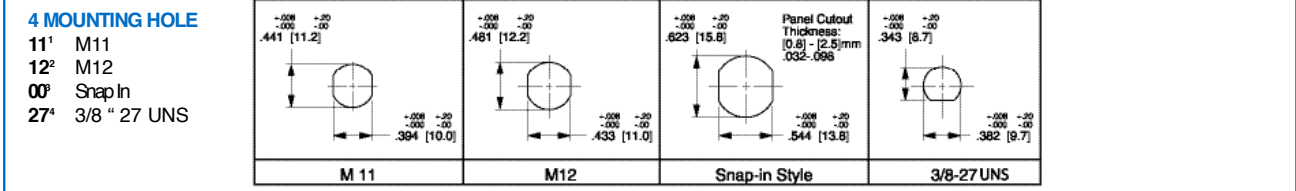
1 SERIES CLB

2 RATING

03	3 amp	05	5 amp	07	7 amp	10	10 amp	13	13 amp	18	18 amp	25	25 amp	35	35 amp
04	4 amp	06	6 amp	08	8 amp	12	12 amp	15	15 amp	20	20 amp	30	30 amp	40	40 amp

3 VOLTAGE

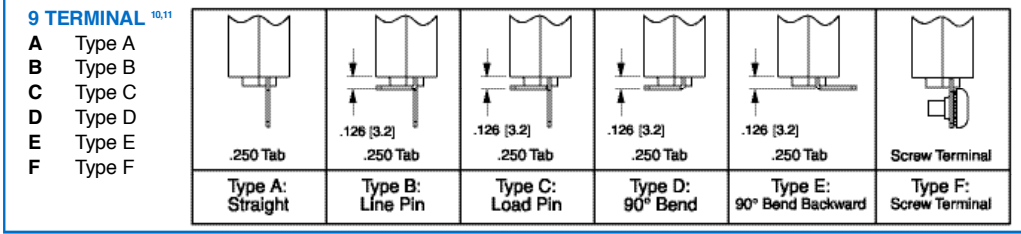
3 125-250VAC/ 32 VDC



NOTES:
All dimensions are in. [mm].
Tolerance ±.005 [.127] unless otherwise specified.
1 Used with bushing A or B only.
2 Used with bushing C only.
3 Used with bushing D only.
4 Used with bushing E & J only.
5 Used with M12 mounting hole only.
6 Used with M11 mounting hole only.
7 Used with mounting hole 00 only.
8 Used with 27 mounting hole only.
9 All hardware available separately, Consult factory.
10 35 & 40 amp ratings must use solder joint to connect wire to non-screw type terminals.
11 Terminals are .040 [1.0] thickness for rating 35 & 40, & .315 [7.8] thickness is for ratings < 35 amps.
12 Available with type E or J bushing only.

8 BUTTON

B Black R Red W White



10 BUTTON MARKING (IF BLANK, NO MARKING.)

Button Marking Orientation: 15

03	3 amp	05	5 amp	07	7 amp	10	10 amp	13	13 amp	18	18 amp	25	25 amp	35	35 amp
04	4 amp	06	6 amp	08	8 amp	12	12 amp	15	15 amp	20	20 amp	30	30 amp	40	40 amp