



Micro Commercial Components

Micro Commercial Components
 20736 Marilla Street Chatsworth
 CA 91311
 Phone: (818) 701-4933
 Fax: (818) 701-4939

MB805 THRU MB810

Features

- Mounting Hole For #6 Screw
- Any Mounting Position
- Surge Rating Of 125 Amps
- Case Material: Molded Plastic. UL Flammability Classification Rating 94V-0 and MSL Rating 1
- Lead Free Finish/RoHS Compliant (NOTE 1) ("P" Suffix designates RoHS Compliant. See ordering information)

Maximum Ratings

- Operating Temperature: -55°C to +125°C
- Storage Temperature: -55°C to +150°C
- UL Recognized File # E165989

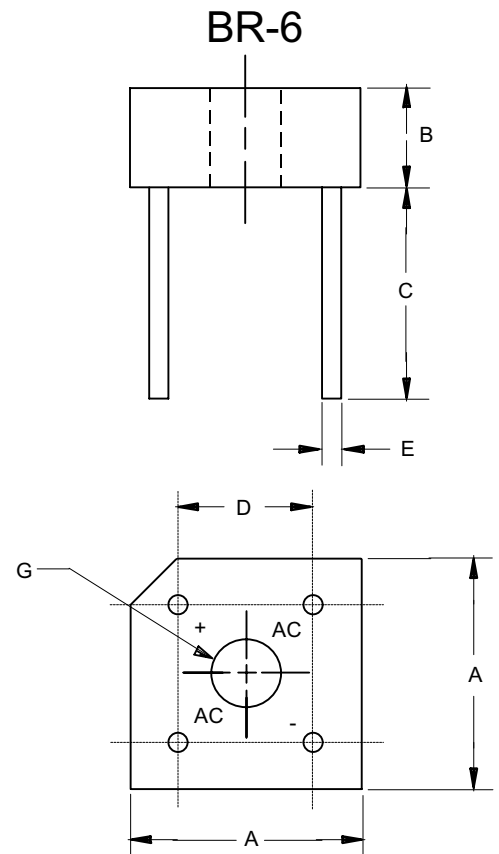
| Microsemi Catalog Number | Device Marking | Maximum Recurrent Peak Reverse Voltage | Maximum RMS Voltage | Maximum DC Blocking Voltage |
|--------------------------|----------------|--|---------------------|-----------------------------|
| MB805 | MB805 | 50V | 35V | 50V |
| MB81 | MB81 | 100V | 70V | 100V |
| MB82 | MB82 | 200V | 140V | 200V |
| MB84 | MB84 | 400V | 280V | 400V |
| MB86 | MB86 | 600V | 420V | 600V |
| MB88 | MB88 | 800V | 560V | 800V |
| MB810 | MB810 | 1000V | 700V | 1000V |

Electrical Characteristics @ 25°C Unless Otherwise Specified

| | | | |
|---|-------------|-------------|--|
| Average Forward Current | $I_{F(AV)}$ | 8.0A | $T_C = 50^\circ\text{C}$ |
| Peak Forward Surge Current | I_{FSM} | 125A | 8.3ms, half sine |
| Maximum Forward Voltage Drop Per Element | V_F | 1.1V | $I_{FM} = 4.0\text{A}$ per element; $T_A = 25^\circ\text{C}$ (Note 2) |
| Maximum DC Reverse Current At Rated DC Blocking Voltage | I_R | 10μA 1mA | $T_J = 25^\circ\text{C}$ $T_J = 100^\circ\text{C}$ |

- Notes: 1. High Temperature Solder Exemption Applied, see EU Directive Annex Notes 7
 2. Pulse Test: Pulse Width 300usec, Duty Cycle 1%

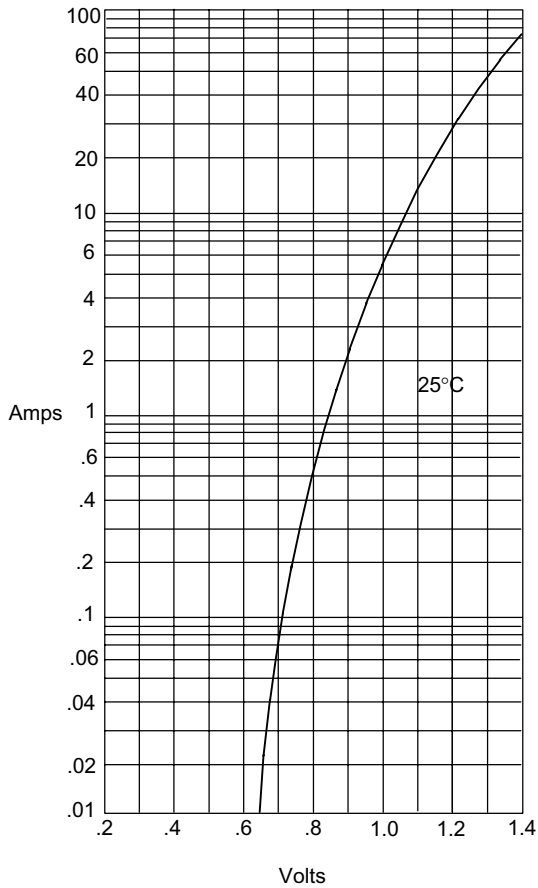
8 Amp Single Phase Bridge Rectifier 50 to 1000 Volts



| DIM | DIMENSIONS | | | | NOTE |
|-----|------------|------|-------|-------|---------|
| | INCHES | | MM | | |
| A | .578 | .618 | 14.69 | 15.71 | 2PL |
| B | .230 | .270 | 5.84 | 6.86 | |
| C | .750 | --- | 19.10 | --- | |
| D | .405 | .444 | 10.30 | 11.30 | 2PL |
| E | .038 | .042 | 0.97 | 1.07 | 4PL/TYP |
| G | .145 | --- | 3.70 | --- | ∅ |

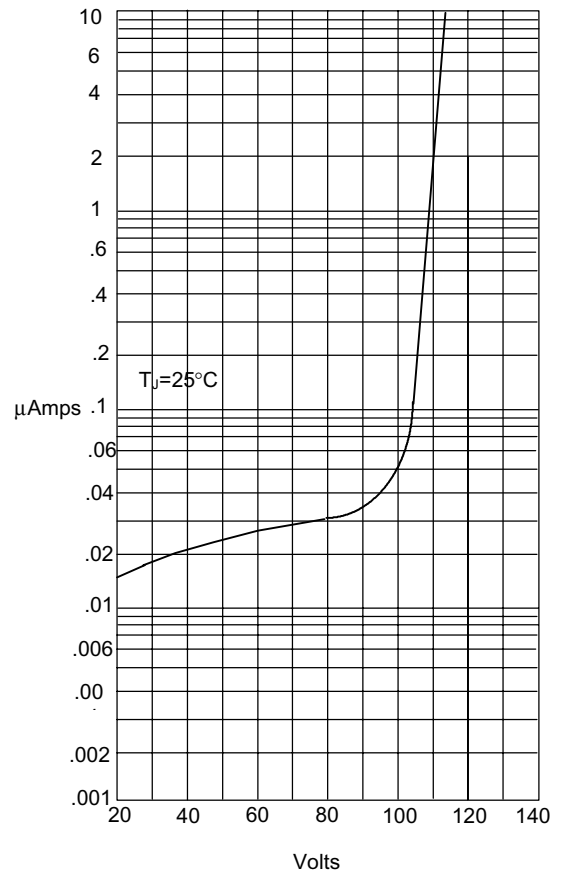
MB805 thru MB810

Figure 1
Typical Forward Characteristics



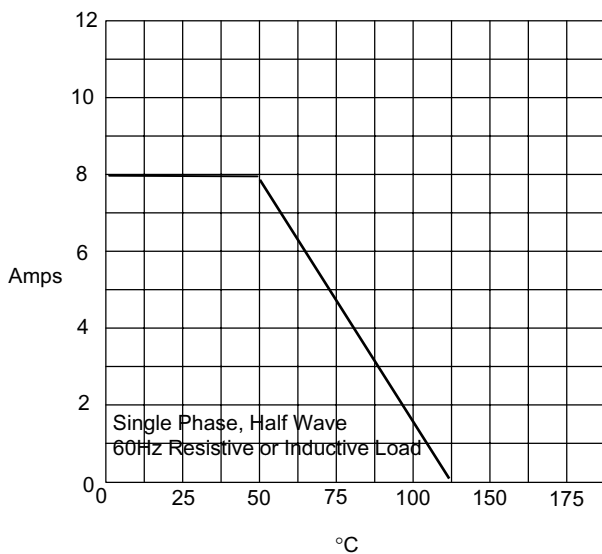
Instantaneous Forward Current - Amperes versus Instantaneous Forward Voltage - Volts

Figure 2
Micro Commercial Components
Typical Reverse Characteristics



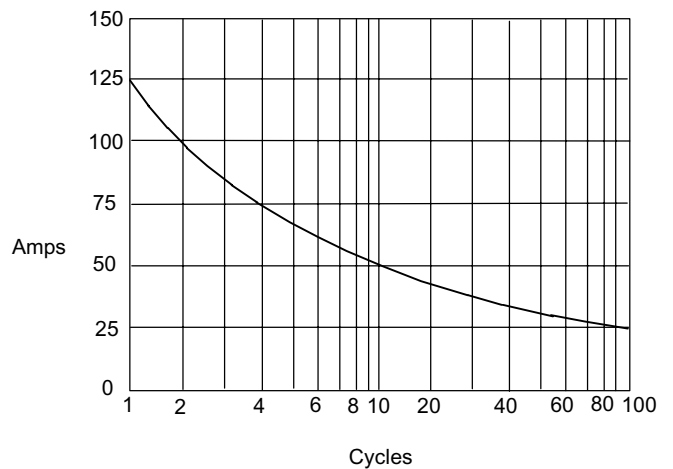
Instantaneous Reverse Leakage Current - MicroAmperes versus Percent Of Rated Peak Reverse Voltage - Volts

Figure 3
Forward Derating Curve



Average Forward Rectified Current - Amperes versus Ambient Temperature - °C

Figure 4
Maximum Non-Repetitive Forward Surge Current



Peak Forward Surge Current - Amperes versus Number Of Cycles At 60Hz - Cycles



Micro Commercial Components

Ordering Information

| | |
|----------------------------|----------------------------|
| Device (Part Number)-BP | Packing Bulk;200pcs/Box |
|----------------------------|----------------------------|

*****IMPORTANT NOTICE*****

Micro Commercial Components Corp. reserves the right to make changes without further notice to any product herein to make corrections, modifications, enhancements, improvements, or other changes. *Micro Commercial Components Corp.* does not assume any liability arising out of the application or use of any product described herein; neither does it convey any license under its patent rights, nor the rights of others. The user of products in such applications shall assume all risks of such use and will agree to hold *Micro Commercial Components Corp.* and all the companies whose products are represented on our website, harmless against all damages.

*****APPLICATIONS DISCLAIMER*****

Products offer by *Micro Commercial Components Corp.* are not intended for use in Medical, Aerospace or Military Applications.