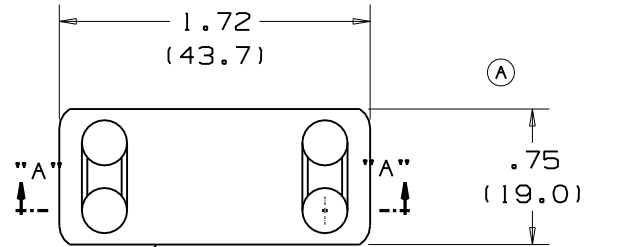
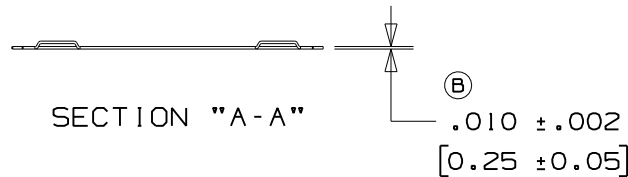


THIS COPY IS PROVIDED ON A RESTRICTED BASIS AND IS NOT TO BE USED IN ANY WAY DETRIMENTAL TO THE INTERESTS OF PANDUIT CORP.



AISI NO. 5 EDGES ROLLED TO ELIMINATE SHARPNESS



PART NO.	MATERIAL	PKG. QTY.
MMP172-C	304 S.S.	100
MMP172-C316	316 S.S.	100

NOTES:

1. DIMENSION IN () ARE mm.
2. CUSTOM PERMANENT MARKING AVAILABLE. CONSULT FACTORY.
3. USE WITH STD. CROSS SECTION MLT'S.
4. TOLERANCE (UNLESS OTHERWISE SPECIFIED):
 .XXX = ±.020(.51)
 .XX = ±.03(.8)

S41045_05

REV	DATE	BY	CHK	DESCRIPTION	ECN #	PM	CUST	PANDUIT CORP. TINLEY PARK, ILLINOIS		MINI STANDARD METAL MARKER PLATE	
05	1/07	JAMB	SKB	ⓐ ADDED THICKNESS DIMENSION TO SECTION "A-A"	SS00314	---	---	UNLESS OTHERWISE SPECIFIED, DIMENSIONAL TOLERANCES ARE: (.X) ± (.XXX) ± (.XX) ± .020 ANGLES ±		UNLESS OTHERWISE SPECIFIED, ALL DIMENSIONS ARE GIVEN IN INCHES, THIRD ANGLE PROJECTION.	
04	10/03	BRH	DPN	ⓐ ADDED PACKAGE QTY./CODE TO PART NUMBERS IN TABLE	11167	CCH	JJB				
03	5/02	JAMB	DPN	REMOVED MAT'L.302 SS FROM PART NO.MMP172	10041	CCH	JJB	DRAWN BY SAM DATE 2/4/91 CHK'D JAC		SCALE FULL & NOTED DRAWING NO. S41045 DWG A SIZE	
02	2/01	KMD	SKB	FILE SPEC WAS N41045SA_PCD_01	09086	CCH	JAC				
01	4/93	SM	LM	ADDED STK THK DIM	01532	GP	LA	MAT'L: STAINLESS STEEL			
00	3/91	SM	LM	RELEASED	00378	GP	LA				
REV	DATE	BY	CHK	DESCRIPTION	ECN #	PM	CUST				