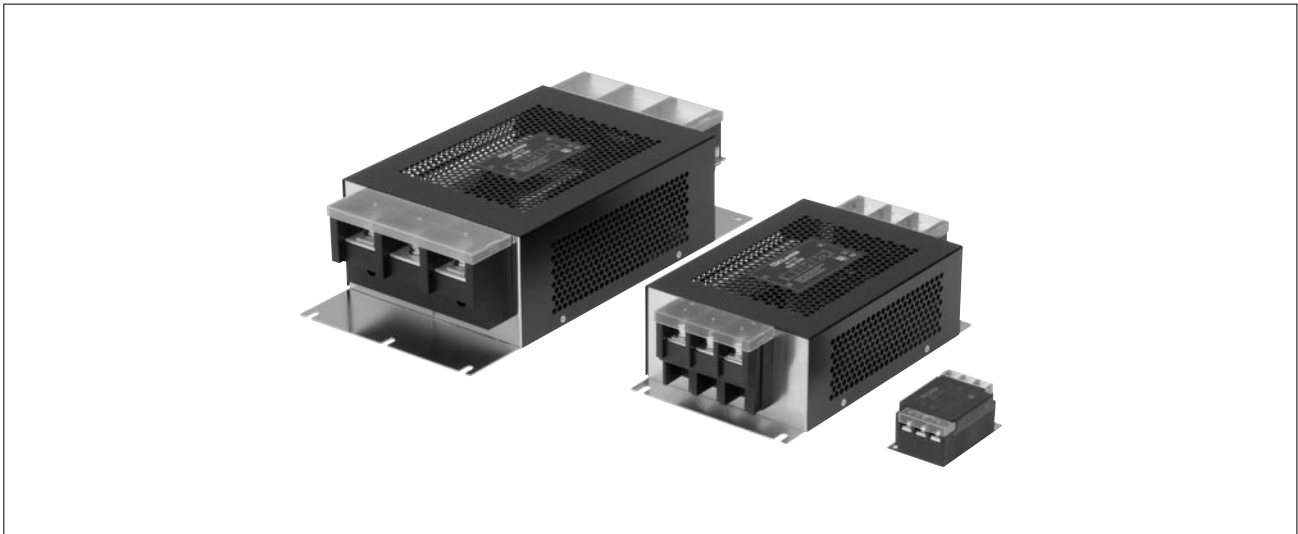


RSEN SERIES

Multipurpose Single-Phase Filter with Various Variations and Functions



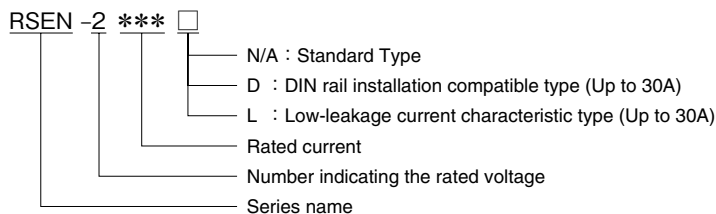
FEATURES

- Self-tightening screws and an open/close type cover make wiring work easier.
- 3 to 300A wide range lineup.
- Optional low-leakage current characteristic type and DIN rail installation compatible type are also available.
- Compliant with RoHS directives.

SAFETY STANDARDS

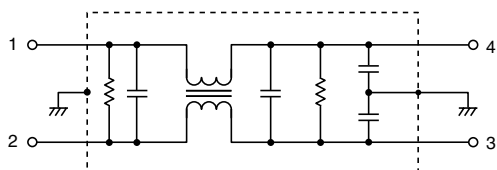
UL1283	File No. E62388 (up to 60A)
CSA C22.2 No.8	File No. 208777 (up to 60A)
EN60939	Licence Ref. No. SE/07115-2 (up to 60A)

PRODUCT IDENTIFICATION

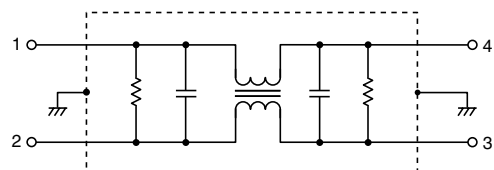


CIRCUIT DIAGRAMS

RSEN-2 ***
RSEN-2 *** D



RSEN-2 *** L



• Conformity to RoHS Directive: This means that, in conformity with EU Directive 2002/95/EC, lead, cadmium, mercury, hexavalent chromium, and specific bromine-based flame retardants, PBB and PBDE, have not been used, except for exempted applications.

• All specifications are subject to change without notice.

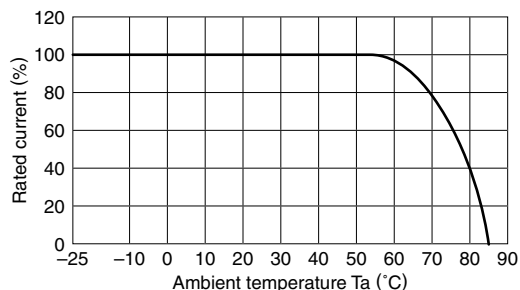
ELECTRICAL CHARACTERISTICS

Part No.	Rated voltage (AC/DC)	Rated current (AC/DC)	Withstand voltage	Insulation resistance	Leakage current	Operating temperature range	With derating over	DC resistance (mΩ)	Attenuation frequency range (MHz)		
									Common mode		Differential mode
									at 25dB	at 10dB	at 25dB
RSEN-2003	250V	3A	AC.2500V 60s [Between line to ground]	100MΩ min. [DC.500V/ 1min.]	1.0mA max. [250V/60Hz]	-25 to +85°C	55°C	250 max.	0.1 to 20	-	0.2 to 30
RSEN-2006		6A						110 max.	0.1 to 10	-	0.2 to 30
RSEN-2010		10A						40 max.	0.2 to 20	-	0.2 to 30
RSEN-2016		16A						20 max.	0.3 to 20	-	0.3 to 30
RSEN-2020		20A						10 max.	0.4 to 30	-	0.3 to 30
RSEN-2030		30A						6 max.	2 to 30	-	0.4 to 30
RSEN-2040		40A						6 max.	1 to 30	-	0.2 to 30
RSEN-2050		50A						4 max.	1 to 30	-	0.2 to 30
RSEN-2060		60A						3 max.	2 to 30	-	0.2 to 30
RSEN-2080		80A						3.4 max.	2 to 10	-	0.1 to 30
RSEN-2100		100A						2.7 max.	2 to 10	-	0.1 to 30
RSEN-2150		150A						2 max.	2 to 10	-	0.1 to 30
RSEN-2200		200A						1.4 max.	-	0.4 to 30	0.1 to 30
RSEN-2250		250A						1 max.	-	1 to 20	0.1 to 30
RSEN-2300	300A	0.7 max.	-	2 to 20	0.1 to 30						

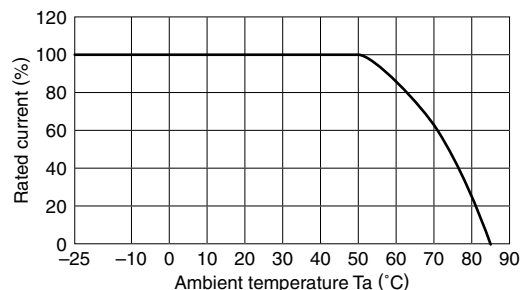
Part No.	Rated voltage (AC/DC)	Rated current (AC/DC)	Withstand voltage	Insulation resistance	Leakage current	Operating temperature range	With derating over	DC resistance (mΩ)	Attenuation frequency range (MHz)		
									Common mode		Differential mode
									at 25dB	at 10dB	at 25dB
RSEN-2003L	250V	3A	AC.2500V 60s [Between line to ground]	100MΩ min. [DC.500V/ 1min.]	10 μA max. [250V/60Hz]	-25 to +85°C	55°C	250 max.	0.1 to 2	-	0.2 to 30
RSEN-2006L		6A						110 max.	0.1 to 2	-	0.2 to 30
RSEN-2010L		10A						40 max.	-	0.1 to 10	0.2 to 30
RSEN-2016L		16A						20 max.	-	0.1 to 10	0.2 to 30
RSEN-2020L		20A						10 max.	-	0.2 to 10	0.3 to 30
RSEN-2030L		30A						6 max.	-	0.3 to 5	0.3 to 30

DERATINGS

RSEN-2003/2006/2010/2016/2020/2030/
2040/2050/2060

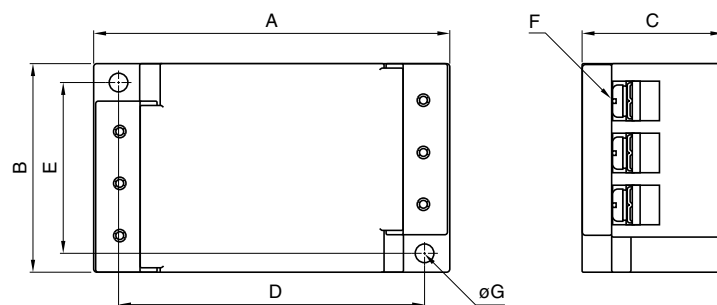


RSEN-2080/2100/2150/2200/2250/2300

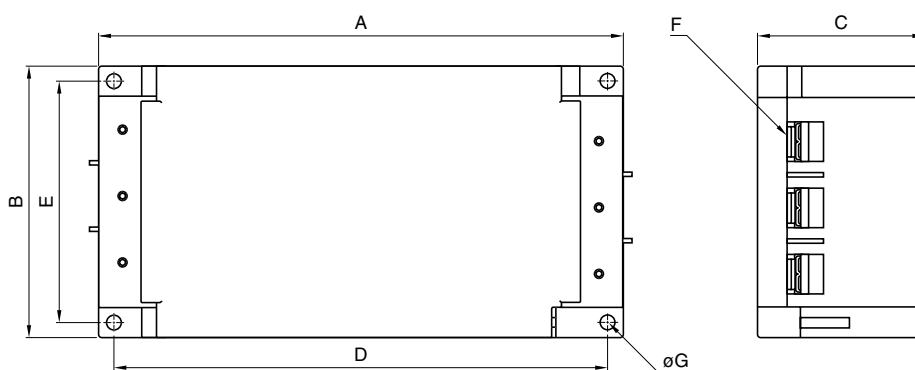


■ SHAPES AND DIMENSIONS

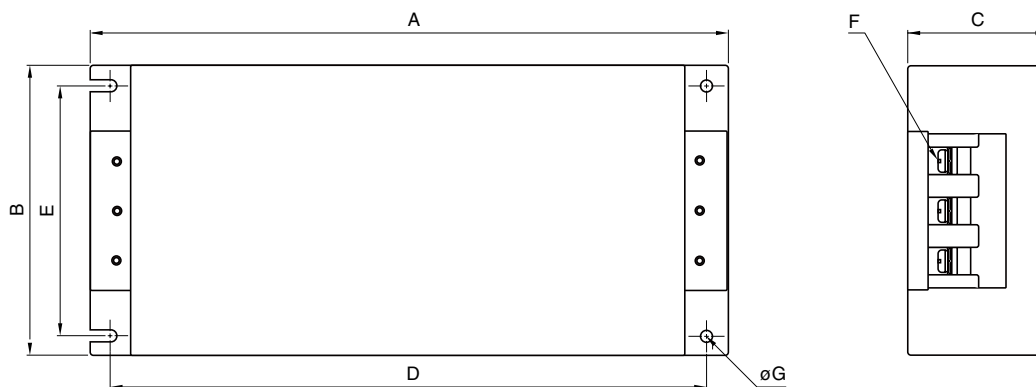
RSEN-2003/2006/2010/2016/2020/2030



RSEN-2040/2050/2060



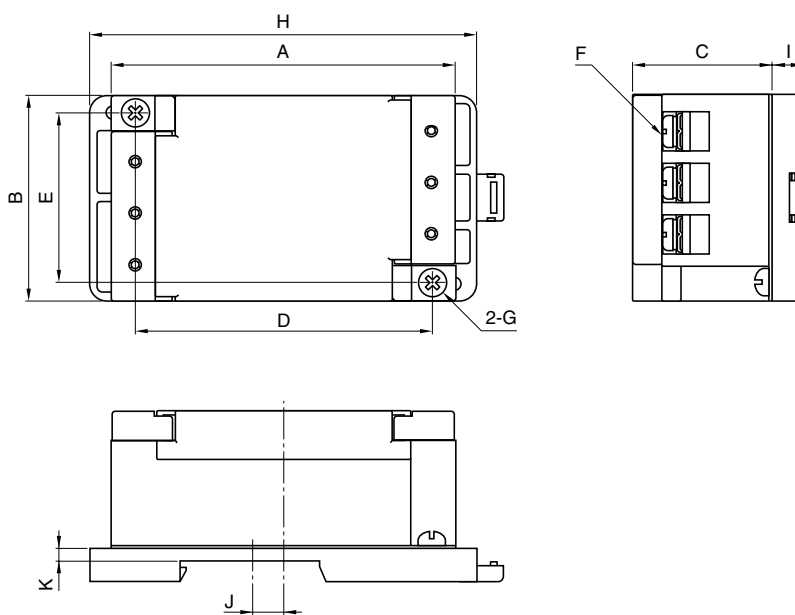
RSEN-2080/2100/2150/2200/2250/2300



Dimensions in mm

Part No.	A	B	C	D	E	F	ϕG	Recommended clamping torque
RSEN-2003	87	52	35	75	43	M4	4.5	1.27N · m
RSEN-2006								
RSEN-2010								
RSEN-2016								
RSEN-2020								
RSEN-2030	170	90	54	160	80	M5	4.5	2.5N · m
RSEN-2040								
RSEN-2060								
RSEN-2080	267	161	85	247	135	M8	6.5	7.64N · m
RSEN-2100								
RSEN-2150	290	190	87	270	164	M8	6.5	11.8N · m
RSEN-2200	395	195	100	375	169	M10	6.5	
RSEN-2250								
RSEN-2300								

RSEN-2003D/2006D/2010D/2016D/2020D/2030D

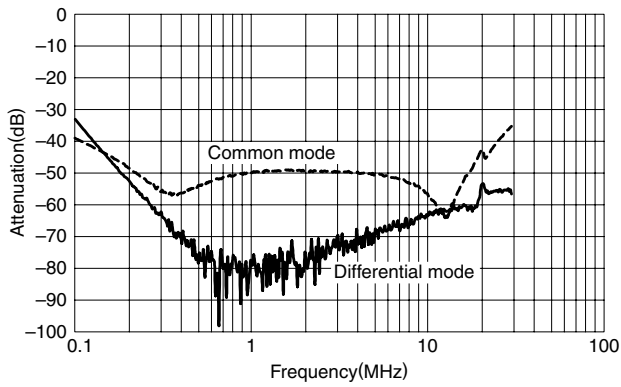


Dimensions in mm

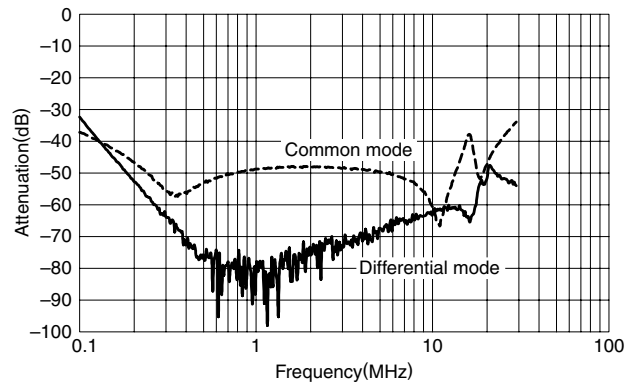
Part No.	A	B	C	D	E	F	G	H	I	J	K
RSEN-2003D	87	52	35	75	43	M4	M4	98	8.4	8.5	3.5
RSEN-2006D											
RSEN-2010D											
RSEN-2016D											
RSEN-2020D											
RSEN-2030D											

ATTENUATION vs. FREQUENCY CHARACTERISTICS

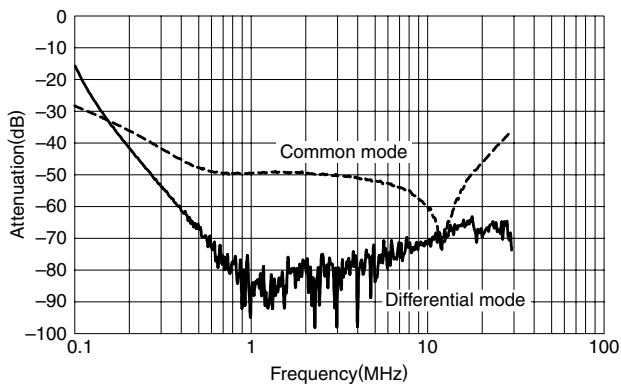
RSEN-2003



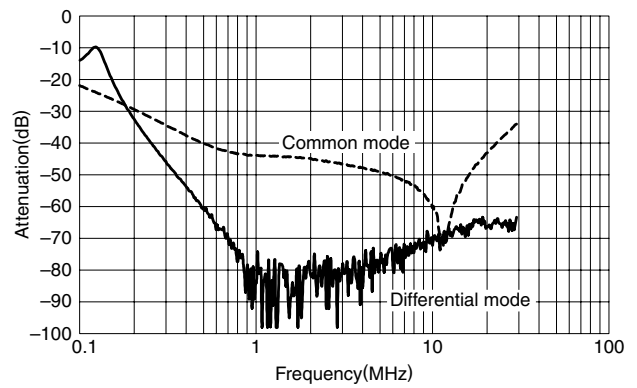
RSEN-2006



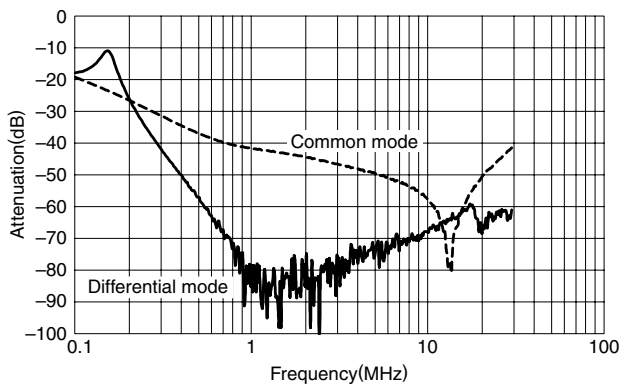
RSEN-2010



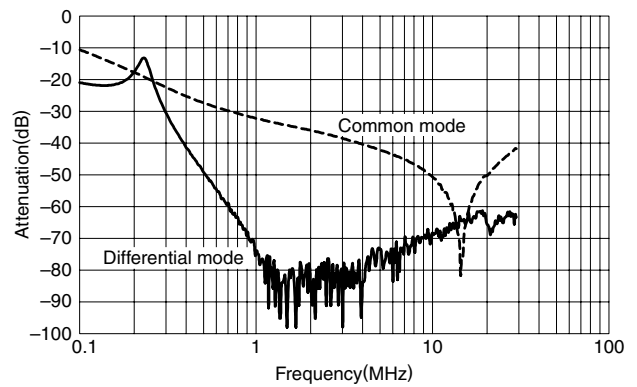
RSEN-2016



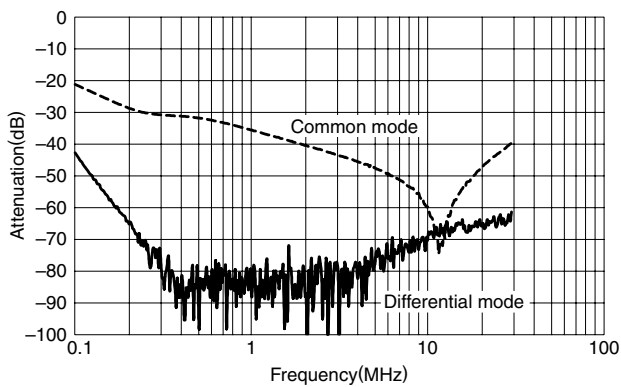
RSEN-2020



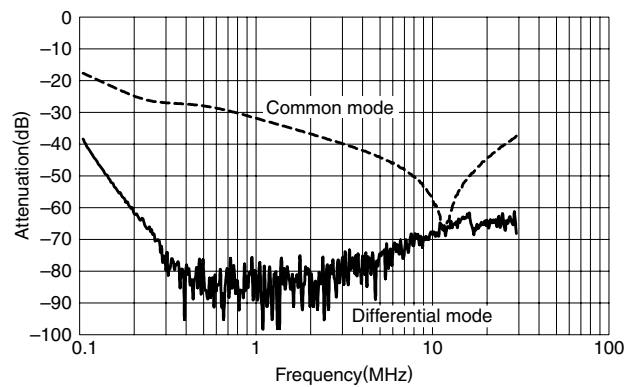
RSEN-2030



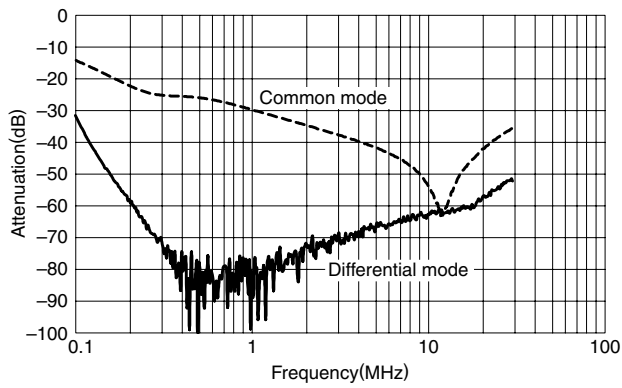
RSEN-2040



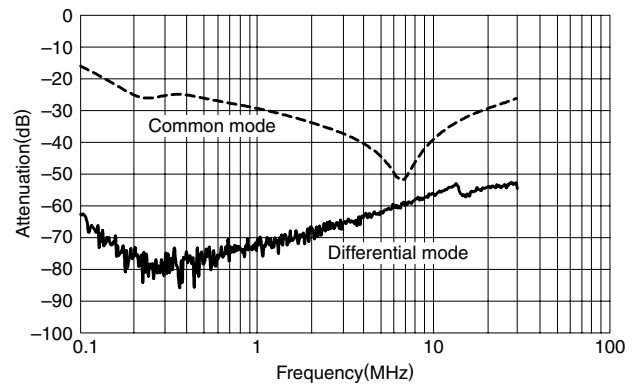
RSEN-2050



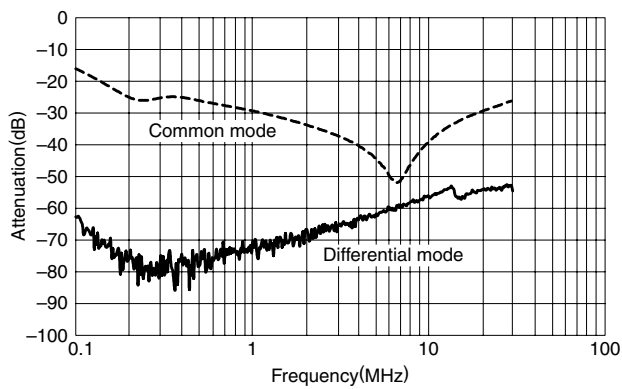
RSEN-2060



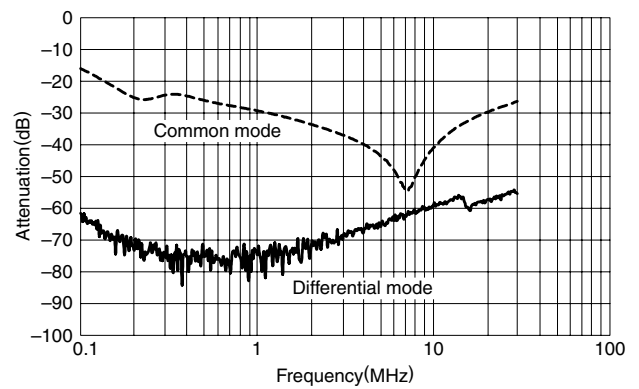
RSEN-2080



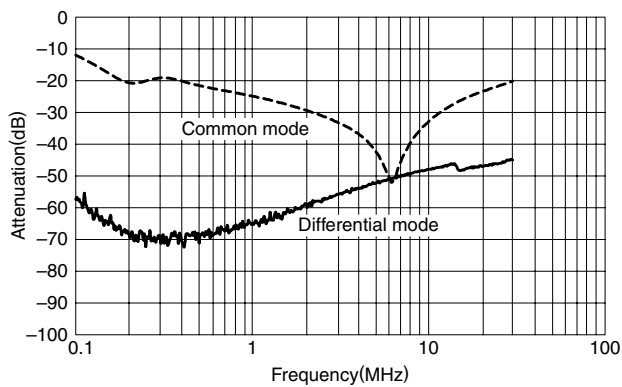
RSEN-2100



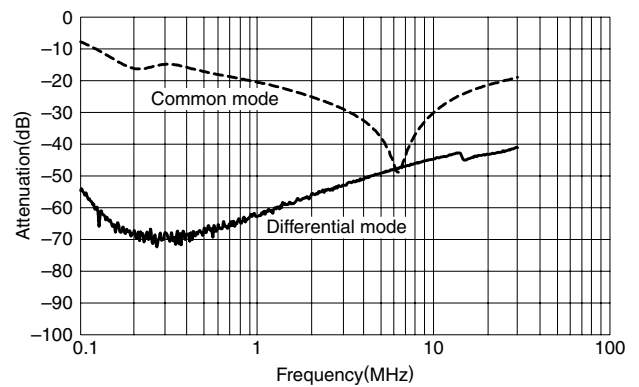
RSEN-2150



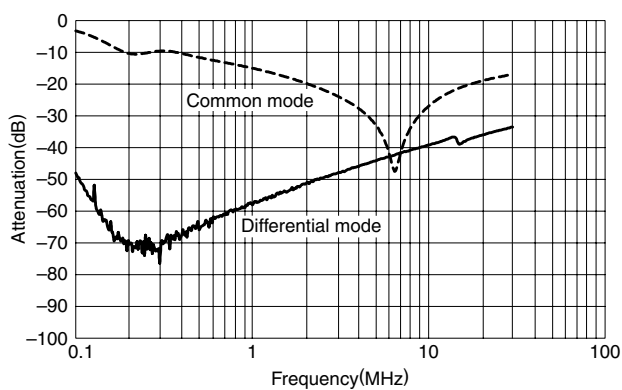
RSEN-2200



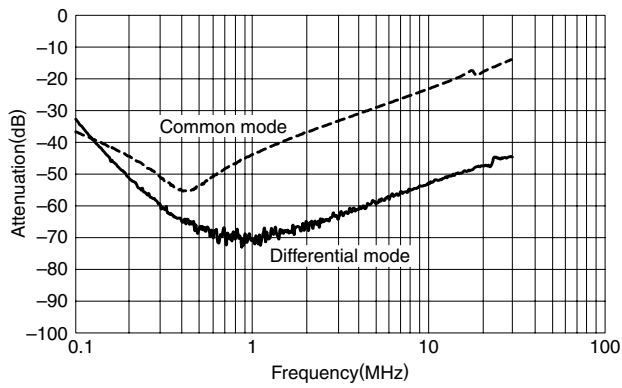
RSEN-2250



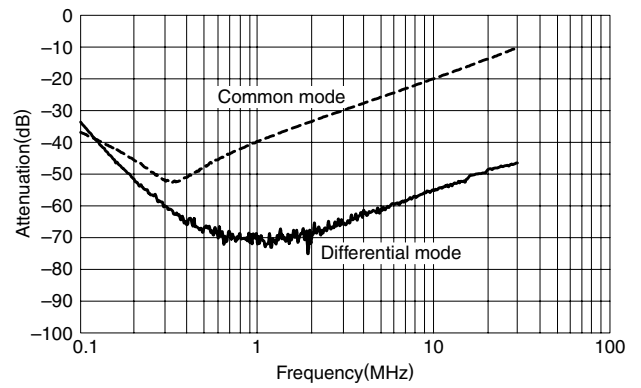
RSEN-2300



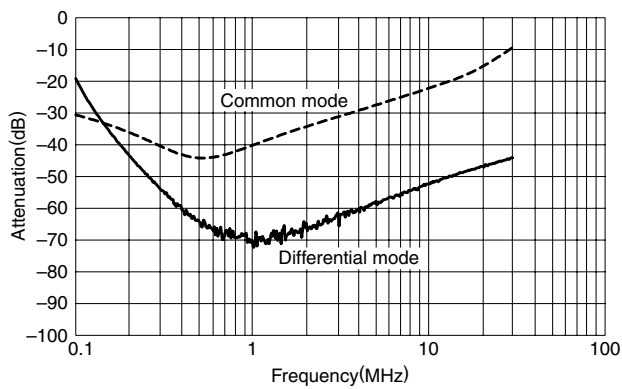
RSEN-2003L



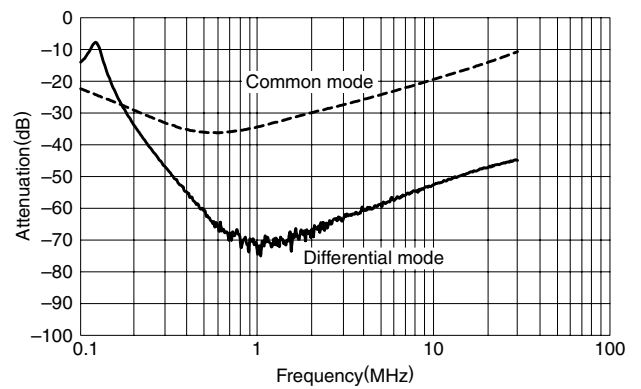
RSEN-2006L



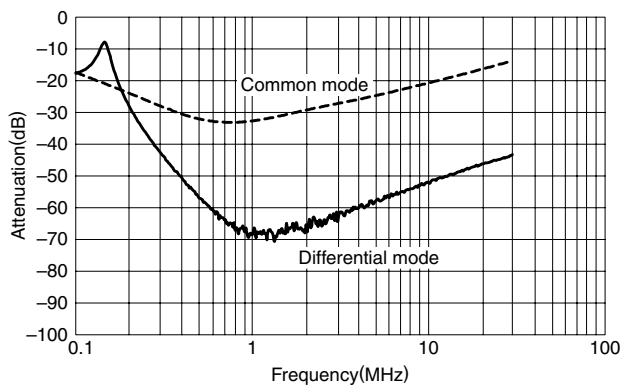
RSEN-2010L



RSEN-2016L



RSEN-2020L



RSEN-2030L

