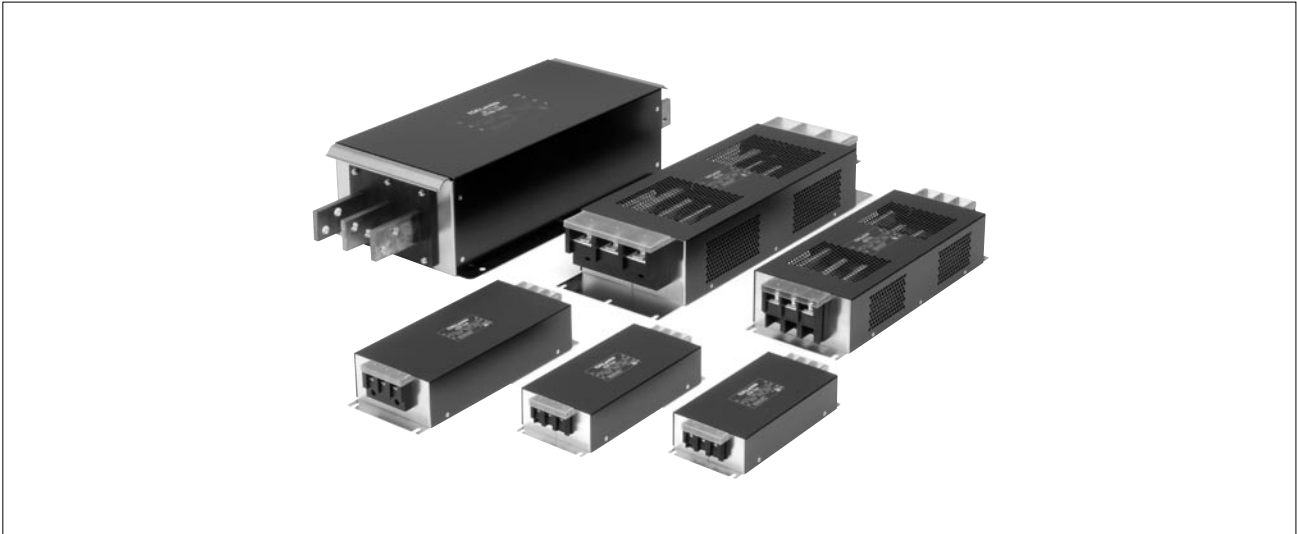


# RTHN SERIES

## High-Attenuation Three-Phase Filter with Many Current Variations (Thin Type)



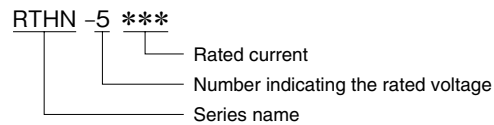
### FEATURES

- 6 to 1,000A wide range lineup.
- High attenuation, thin type with L2.
- Low-profile design.
- Self-tightening screws and an open/close type cover make wiring work easier.
- Terminal block cover included for safety.
- Compliant with RoHS directives.

### SAFETY STANDARDS

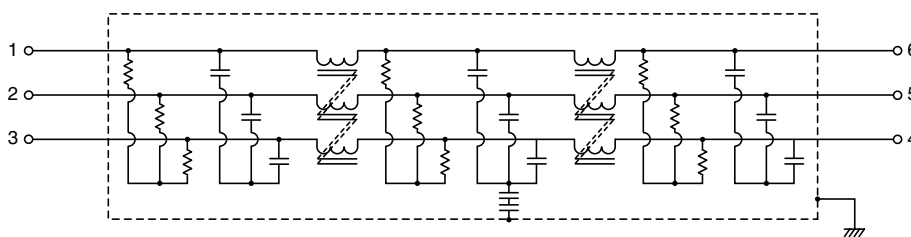
- |         |  |
|---------|--|
| UL1283  | File No. E62388 (Up to 150A)             |
| EN60939 | Licence Ref. No. SE/07115-4 (Up to 300A) |

### PRODUCT IDENTIFICATION

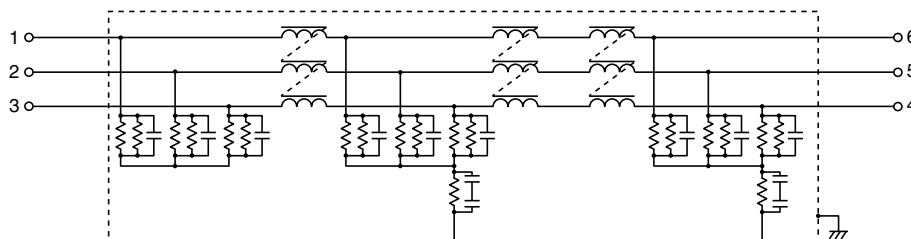


### CIRCUIT DIAGRAMS

RTHN-5006/5010/5020/5030/5040/5050/5060/5080/5100/5150/5200/5250/5300



RTHN-5400/5600/5A00



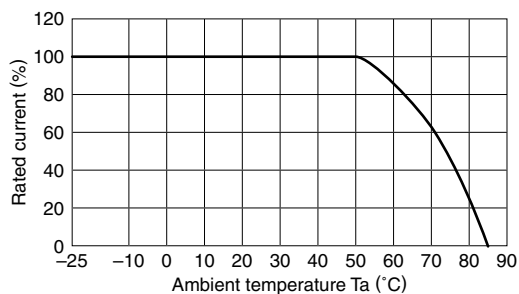
• Conformity to RoHS Directive: This means that, in conformity with EU Directive 2002/95/EC, lead, cadmium, mercury, hexavalent chromium, and specific bromine-based flame retardants, PBB and PBDE, have not been used, except for exempted applications.

• All specifications are subject to change without notice.

## ELECTRICAL CHARACTERISTICS

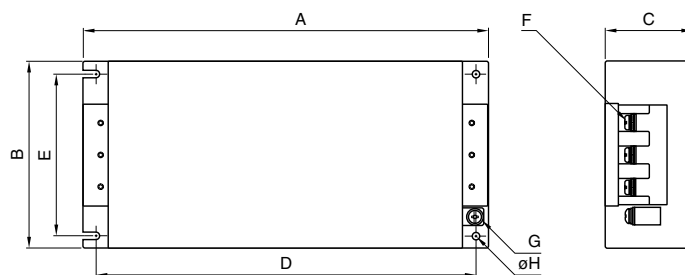
Part No.	Rated voltage (AC/DC)	Rated current (AC/DC)	Withstand voltage	Insulation resistance	Leakage current	Operating temperature range	With derating over	DC resistance (mΩ)	Attenuation frequency range (MHz)		
									Common mode	Differential mode	
									at 25dB	at 25dB	
RTHN-5006	500V	6A	AC.2500V 60s [Between line to ground]	100MΩ min. [DC.500V/ 1min.]	2.5mA max. [250V/60Hz]	-25 to +85°C	50°C	290 max.	0.1 to 30	0.1 to 30	
RTHN-5010		10A						120 max.	0.1 to 20	0.2 to 30	
RTHN-5020		20A						50 max.	0.1 to 20	0.2 to 30	
RTHN-5030		30A						26 max.	0.2 to 20	0.2 to 30	
RTHN-5040		40A						20 max.	0.2 to 20	0.1 to 30	
RTHN-5050		50A						14 max.	0.2 to 20	0.2 to 30	
RTHN-5060		60A						10 max.	0.2 to 20	0.2 to 30	
RTHN-5080		80A						10 max.	0.1 to 10	0.2 to 30	
RTHN-5100		100A						8 max.	0.1 to 10	0.2 to 30	
RTHN-5150		150A						6 max.	0.1 to 10	0.2 to 30	
RTHN-5200		200A						4 max.	0.3 to 20	0.2 to 30	
RTHN-5250		250A						3 max.	0.3 to 10	0.2 to 30	
RTHN-5300		300A						2 max.	0.5 to 6	0.2 to 30	
RTHN-5400		400A						17.5mA max. [250V/60Hz]	0.2 max.	0.2 to 7	0.1 to 2
RTHN-5600		600A						35mA max. [500V/60Hz]	0.3 max.	0.2 to 7	0.1 to 2
RTHN-5A00		1000A						0.5 max.	0.2 to 7	0.1 to 2	

## DERATINGS

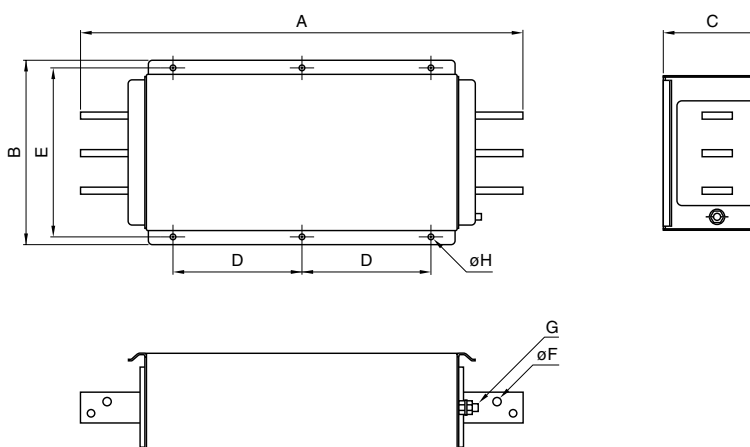


■ SHAPES AND DIMENSIONS

RTHN-5006/5010/5020/5030/5040/5050/5060/5080/5100/5150/5200/5250/5300



RTHN-5400/5600/5A00

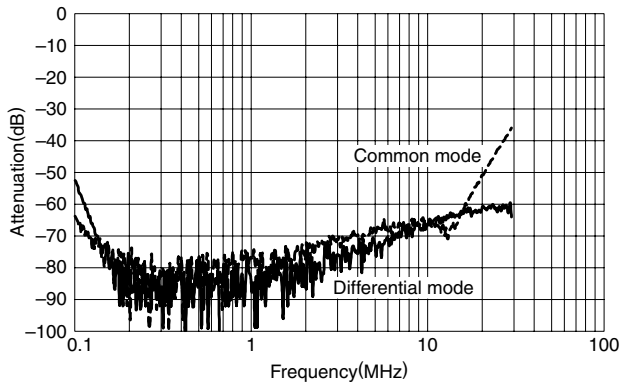


Dimensions in mm

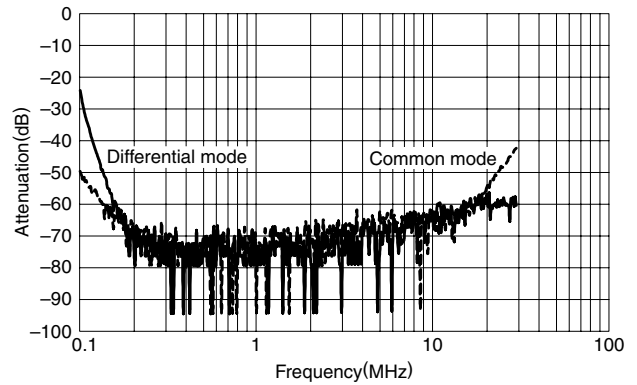
Part No.	A	B	C	D	E	F	G	$\phi H$	Recommended clamping torque		
RTHN-5006	210	95	50	195	78	M4	M4	4.5	M4 : 1.27N · m		
RTHN-5010											
RTHN-5020	240	105	55	225	85	M4	M4				
RTHN-5030											
RTHN-5040	300	128	68	280	102	M5	M4	5.5	M5 : 2.5N · m		
RTHN-5050											
RTHN-5060											
RTHN-5080	430	161	85	410	135	M8	M6	6.5	M6 : 4.8N · m		
RTHN-5100											
RTHN-5150	473	190	88	453	164	M8	M6			6.5	M8 : 7.64N · m
RTHN-5200											
RTHN-5250											
RTHN-5300	593	195	103	573	169	M10	M8			6.5	M10 : 11.8N · m
RTHN-5400	716	300	160	210	275	13	M12	9.0	M12 : 14.0N · m		
RTHN-5600	630										
RTHN-5A00	610										

■ ATTENUATION vs. FREQUENCY CHARACTERISTICS

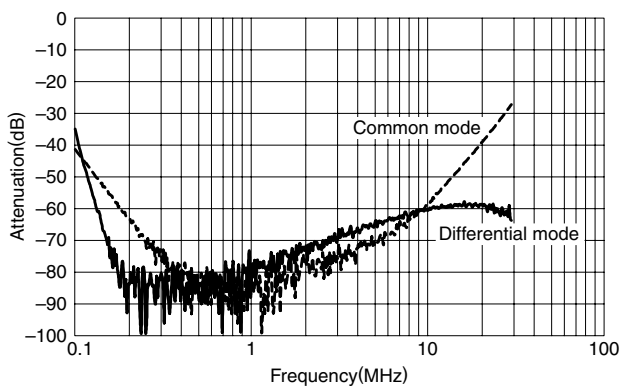
RTHN-5006



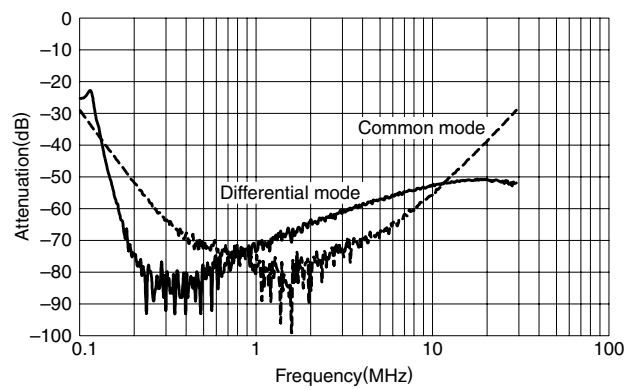
RTHN-5010



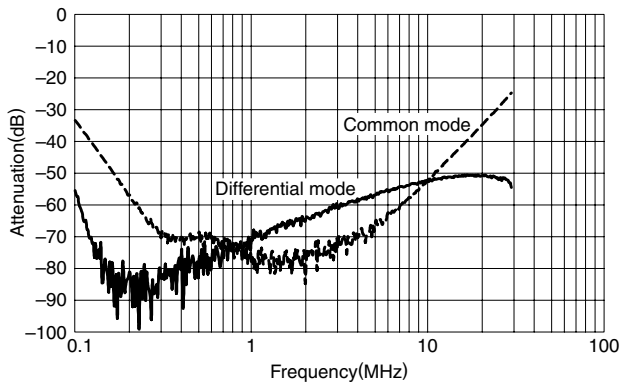
RTHN-5020



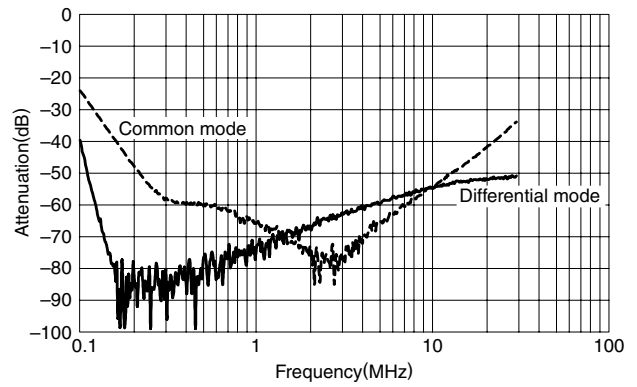
RTHN-5030



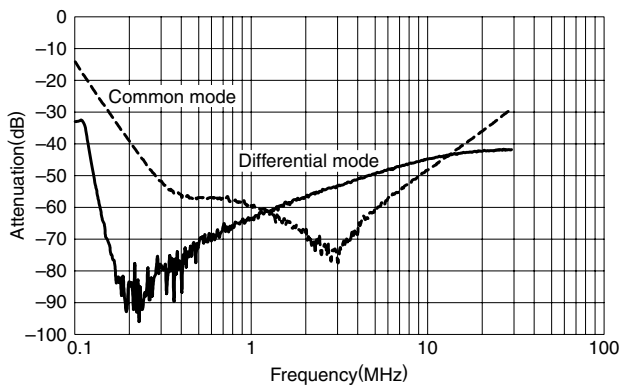
RTHN-5040



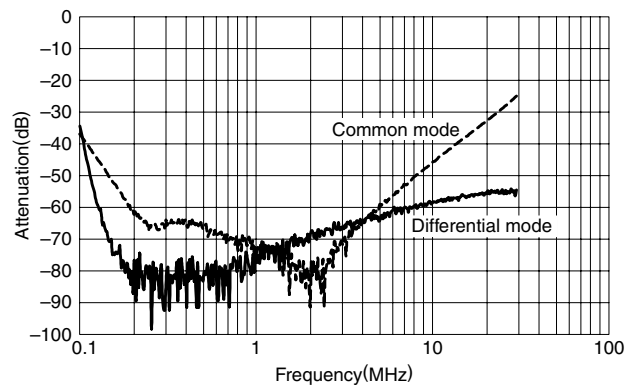
RTHN-5050



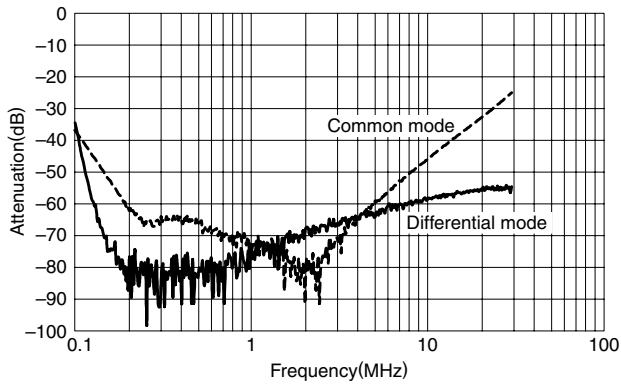
RTHN-5060



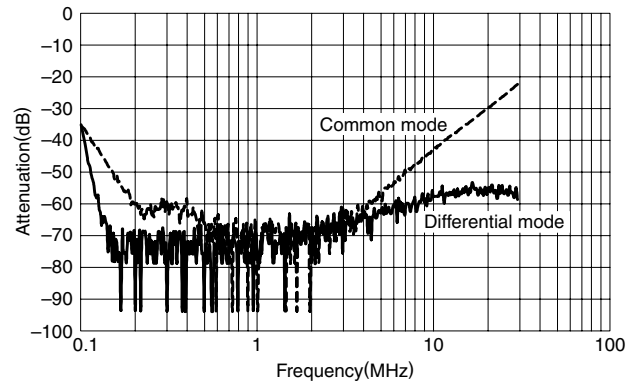
RTHN-5080



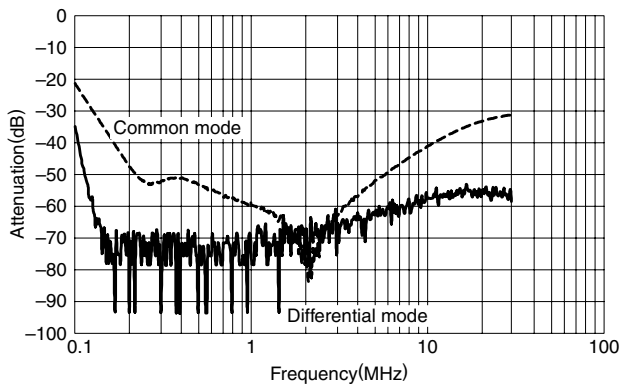
RTHN-5100



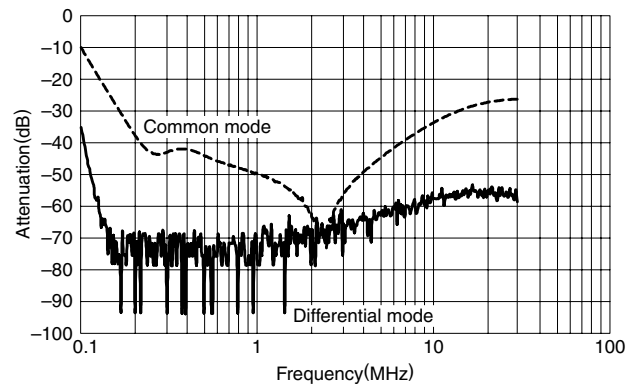
RTHN-5150



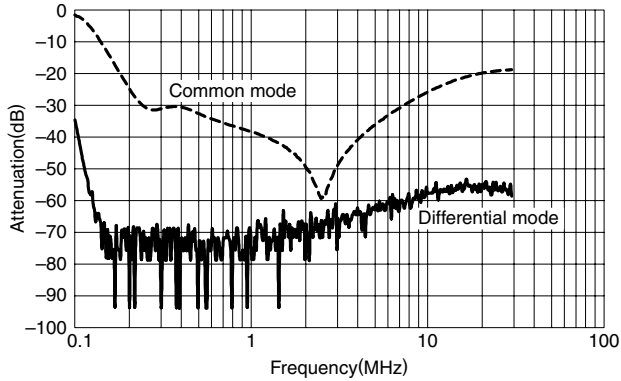
RTHN-5200



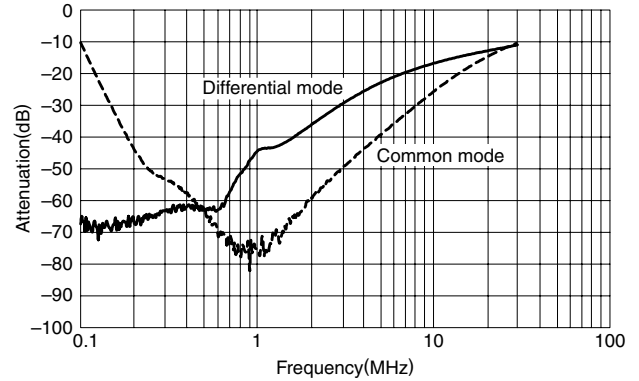
RTHN-5250



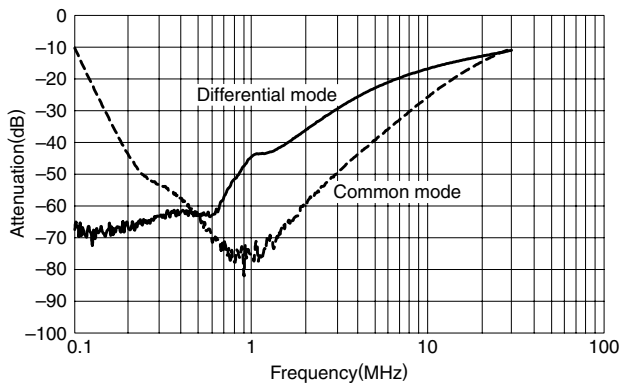
RTHN-5300



RTHN-5400



RTHN-5600



RTHN-5A00

