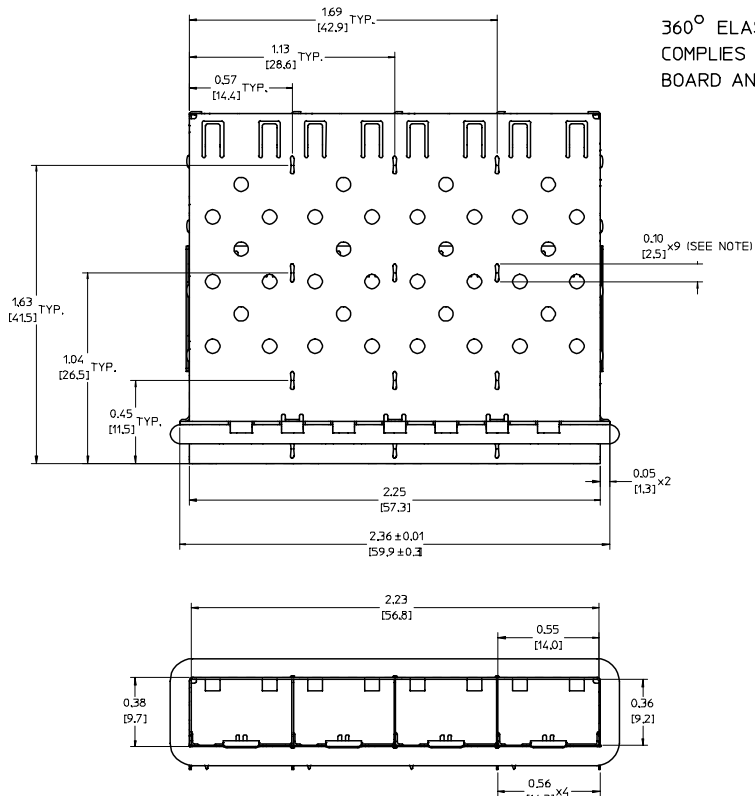


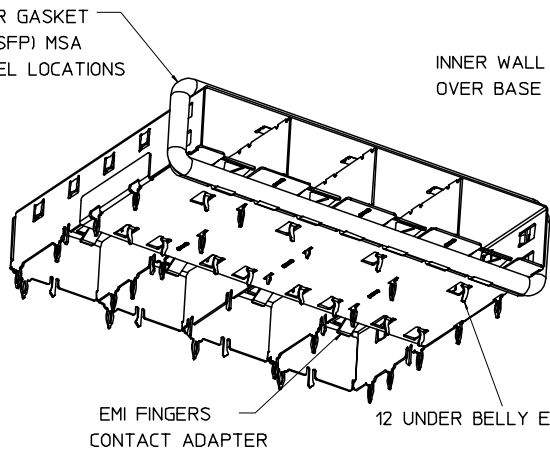
20 | 19 | 18 | 17 | 16 | 15 | 14 | 13 | 12 | 11 | 74728 | 9 | 8 | 7 | 6 | 5 | 4 | 3 | 2 | 1

L  
K  
J  
I  
H  
G  
F  
E  
D  
C  
B  
A

L  
K  
J  
I  
H  
G  
F  
E  
D  
C  
B  
A

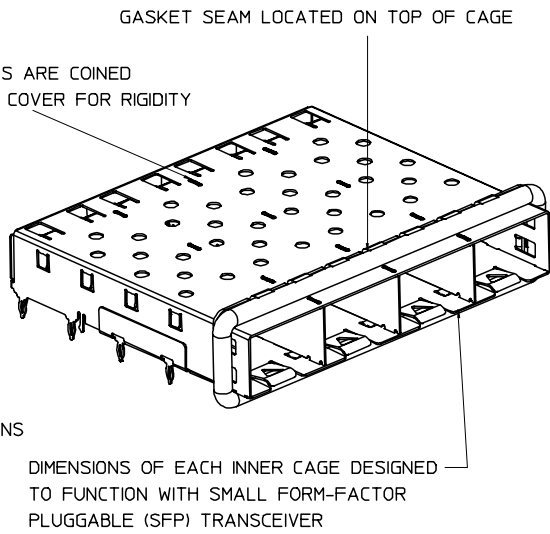


360° ELASTOMER GASKET COMPLIES WITH (SFP) MSA BOARD AND BEZEL LOCATIONS



EMI FINGERS CONTACT ADAPTER

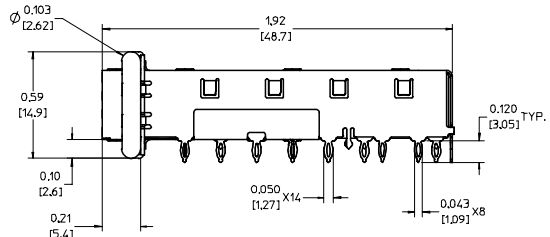
12 UNDER BELLY EMI PINS



GASKET SEAM LOCATED ON TOP OF CAGE

INNER WALL TABS ARE COINED OVER BASE AND COVER FOR RIGIDITY

DIMENSIONS OF EACH INNER CAGE DESIGNED TO FUNCTION WITH SMALL FORM-FACTOR PLUGGABLE (SFP) TRANSCEIVER



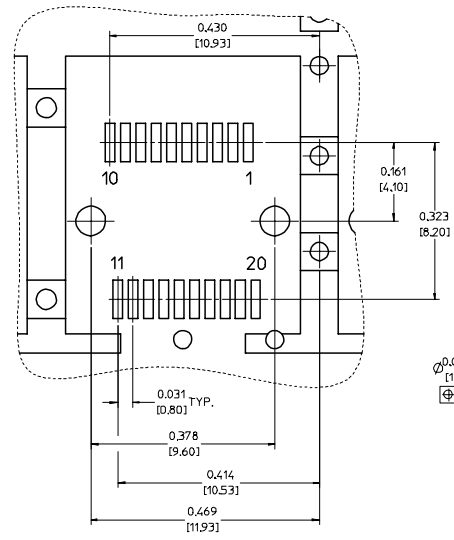
- NOTES:
- PRESS FIT LEGS 0.120" LONG- 0.062 [1.57] MINIMUM PCB THICKNESS. FOR SINGLE SIDED USE ONLY.
  - MATERIAL: COPPER ALLOY. PLATING: PRE-PLATED NICKEL
  - REFERENCE DOCUMENTS: PRODUCT SPECIFICATION: PS-74728-000 COSMETIC SPECIFICATIONS: WI-HP-7-2774 AND WI-HPA-7-0093 TEST SUMMARY: TS-74728-0415
  - MATES WITH SERIES 74728, LIGHT PIPE COVER ASSEMBLY.
  - THIS PART MEETS THE RESTRICTION OF HAZARDOUS SUBSTANCES IN ELECTRICAL AND ELECTRONIC EQUIPMENT (ROHS) DIRECTIVE (2002/95/EC).

CHGD TOL ON SHT3 EC NO: USY2007-0426 DRWN:CCOX 2007/04/20 CHKD: 2007/04/25 APPR:RMAHMOOD007/04/30 REV DESCRIPTION	QUALITY SYMBOLS	GENERAL TOLERANCES (UNLESS SPECIFIED)	SCALE 3:1	DESIGN UNITS METRIC	THIRD ANGLE PROJECTION	REVISE ON CAD ONLY	
	4 PLACES ± --- ± --- 3 PLACES ± --- ± .005 2 PLACES ± 0.13 ± .01 1 PLACE ± 0.25 ± ---	DIMENSION STYLE IN/MM DRAWN BY DATE K SIMONSO 2005/07/09 CHECKED BY DATE BRUSSELL 2005/07/09 APPROVED BY DATE BRUSSELL 2005/07/09	mm INCH ANGULAR ± 1° DRAFT WHERE APPLICABLE MUST REMAIN WITHIN DIMENSIONS	TITLE 1X4 SFP CAGE ASSEMBLY W/ PRESS FIT PINS, PRE-PLATED MOLEX INCORPORATED MATERIAL NO. 747280420 DOCUMENT NO. SD-74728-420 SHEET NO. 1 OF 4			
	THIS DRAWING CONTAINS INFORMATION THAT IS PROPRIETARY TO MOLEX INCORPORATED AND SHOULD NOT BE USED WITHOUT WRITTEN PERMISSION						
	THIS DRAWING CONTAINS INFORMATION THAT IS PROPRIETARY TO MOLEX INCORPORATED AND SHOULD NOT BE USED WITHOUT WRITTEN PERMISSION						

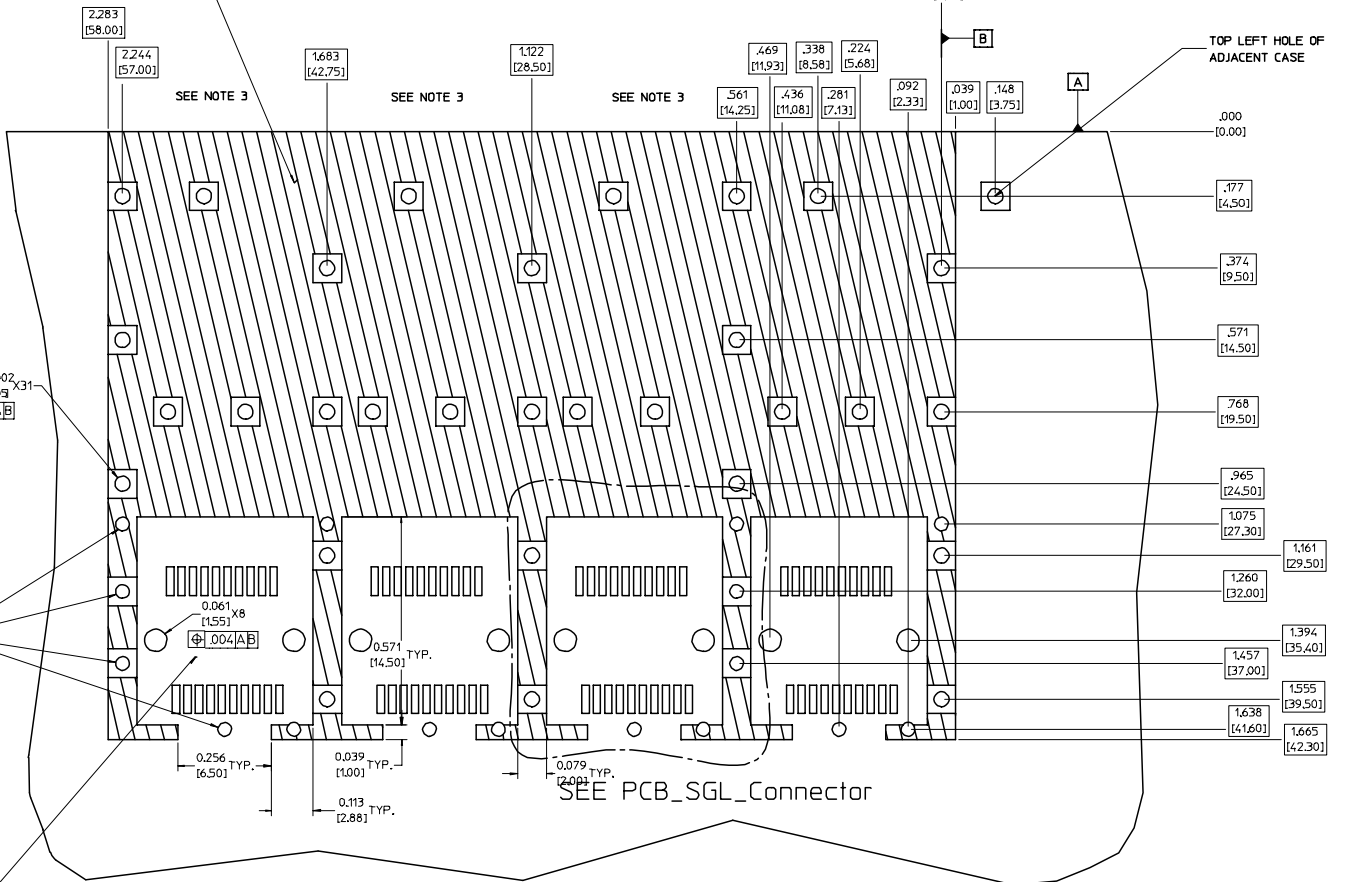
19 | 18 | 17 | 16 | 15 | 14 | 13 | 12 | 11 | 10 | 9 | 8 | 7 | 6 | 5 | 4 | 3 | 2 | 1

### PCB LAYOUT FOR SINGLE SIDE MOUNTING

PCB\_SGL\_Connector  
SCALE 8:1



CROSS-HATCHED AREA DENOTES COMPONENT AND TRACE KEEP-OUT (EXCEPT CHASSIS GROUND)



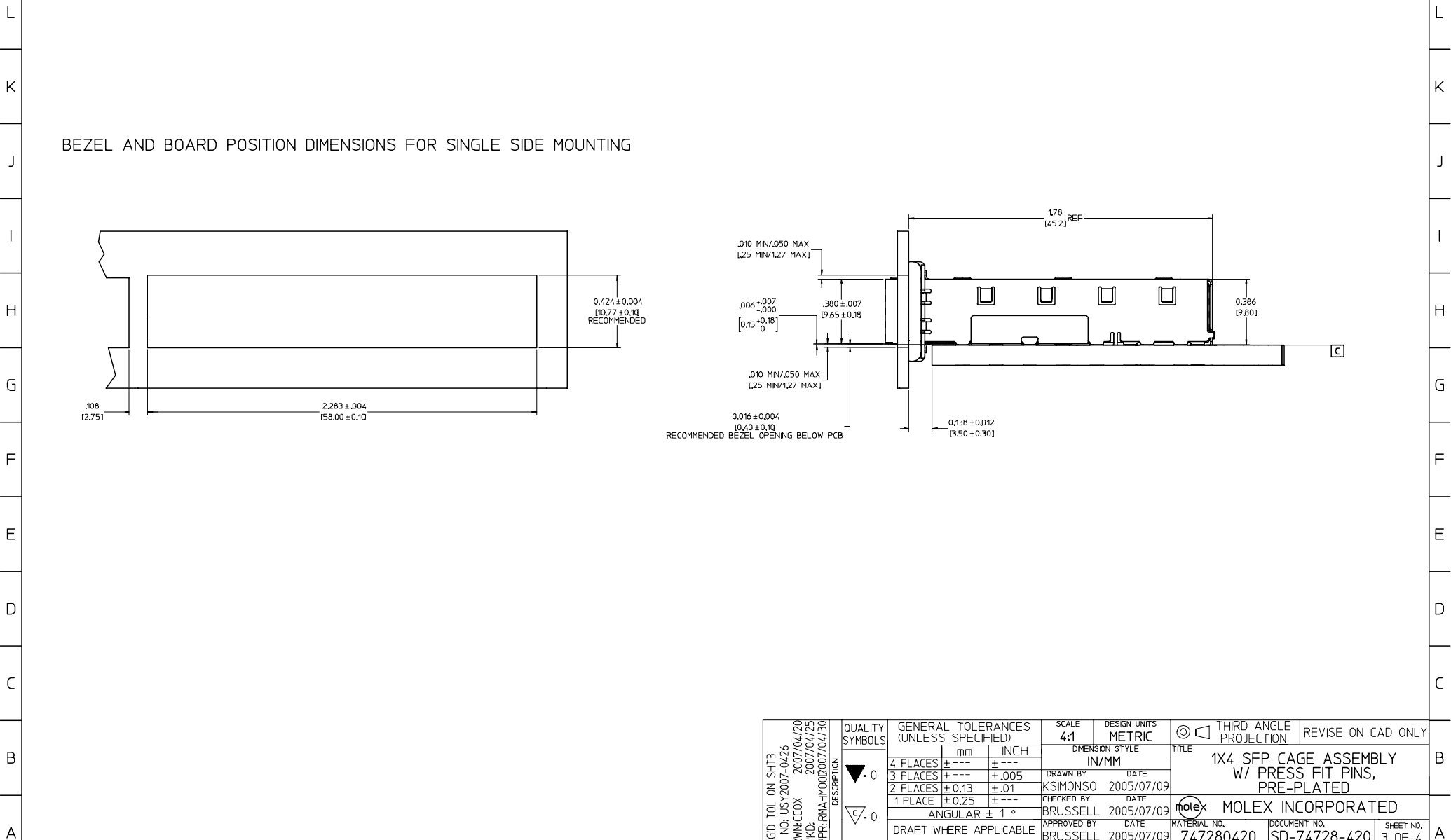
$\phi .037 \pm 0.002$  x16  
 $\phi .004$  [A] [B]  
SMALLER HOLE ON THESE FOUR ROWS ONLY

THIS AREA DENOTES COMPONENT KEEP-OUT (TRACES ALLOWED)

- NOTES:
- PADS AND VIAS GO TO CHASSIS GROUND, (34 PLACES). RECOMMENDED PADS TO BE 2mm SQUARE.
  - PLATING OPTIONAL FOR THROUGH HOLES, (12 PLACES).
  - HOLE PATTERN REPEATS FOR EACH PORT, SPACING BETWEEN PORTS IS 14.25mm.

CHGD TOL ON SHT3 EC NO: USY2007-0426 DRWN:CCOX 2007/04/20 CHKD: 2007/04/25 APPR:RMAHMOOD/07/04/30 REV DESCRIPTION	QUALITY SYMBOLS	GENERAL TOLERANCES (UNLESS SPECIFIED)	SCALE 6:1	DESIGN UNITS METRIC	THIRD ANGLE PROJECTION	REVISE ON CAD ONLY
	$\nabla .0$ $\nabla \epsilon .0$	4 PLACES ± --- ± --- 3 PLACES ± --- ± .005 2 PLACES ± 0.13 ± .01 1 PLACE ± 0.25 ± ---	DIMENSION STYLE IN/MM DRAWN BY DATE K SIMONSO 2005/07/09 CHECKED BY DATE BRUSSELL 2005/07/09 APPROVED BY DATE BRUSSELL 2005/07/09	TITLE 1X4 SFP CAGE ASSEMBLY W/ PRESS FIT PINS, PRE-PLATED MOLEX INCORPORATED MATERIAL NO. 747280420 DOCUMENT NO. SD-74728-420 SHEET NO. 2 OF 4		
		DRAFT WHERE APPLICABLE MUST REMAIN WITHIN DIMENSIONS		THIS DRAWING CONTAINS INFORMATION THAT IS PROPRIETARY TO MOLEX INCORPORATED AND SHOULD NOT BE USED WITHOUT WRITTEN PERMISSION		

20 19 18 17 16 15 14 13 12 11 74728 9 8 7 6 5 4 3 2 1



19 18 17 16 15 14 13 12 11 10 9 8 7 6 5 4 3 2 1

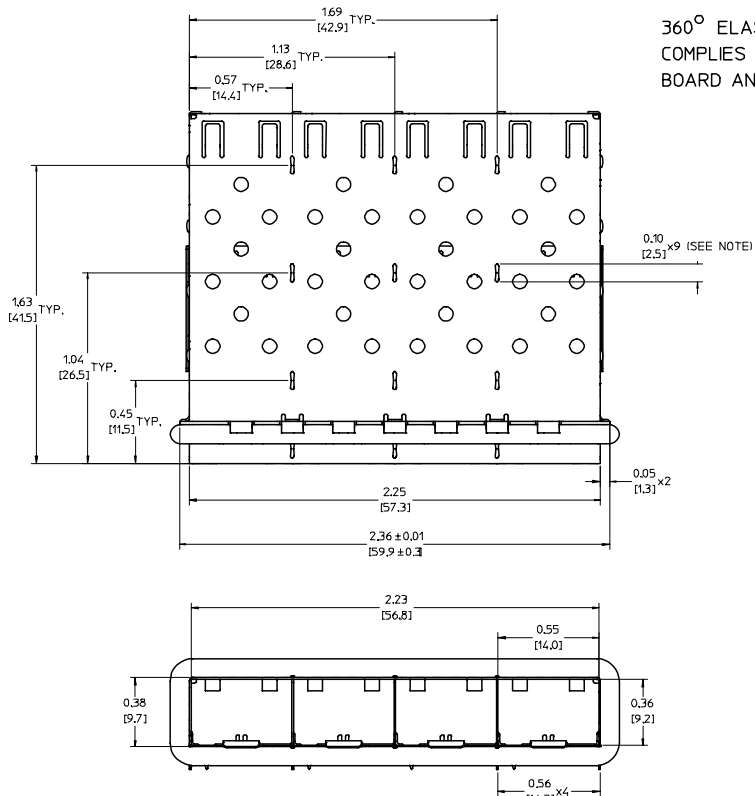
20 | 19 | 18 | 17 | 16 | 15 | 14 | 13 | 12 | 11 | 74728 | 9 | 8 | 7 | 6 | 5 | 4 | 3 | 2 | 1

DATE	REV	CHANGES
2005/07/09	A	INITIAL RELEASE
2006/08/07	B	ADDED NOTE IDENTIFYING HOLE ON ADJACENT CASE
2007/04/10	C	[1] ON SHT3 DELETED F9(.073); [2] ON SHT3 CHG'D F7(.138) TOLERANCE FROM ±.012 TO ±.035; [3] IDENTIFIED ALL VIEWS WITH DISTINCT NAMES.
2007/04/20	D	[1] ON SHT3 CHG'D F7(.138) TOLERANCE FROM ±.035 TO ±.012.

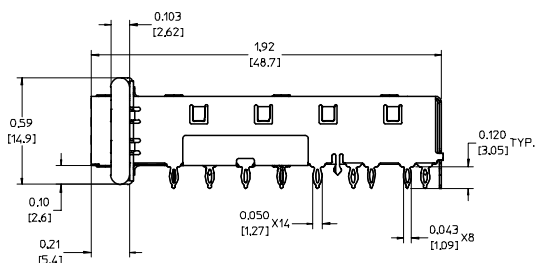
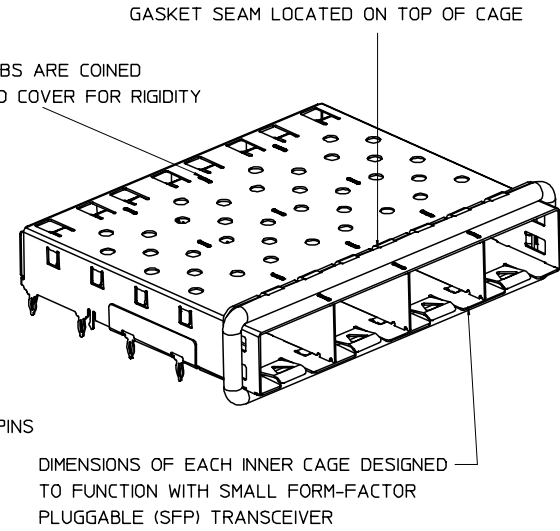
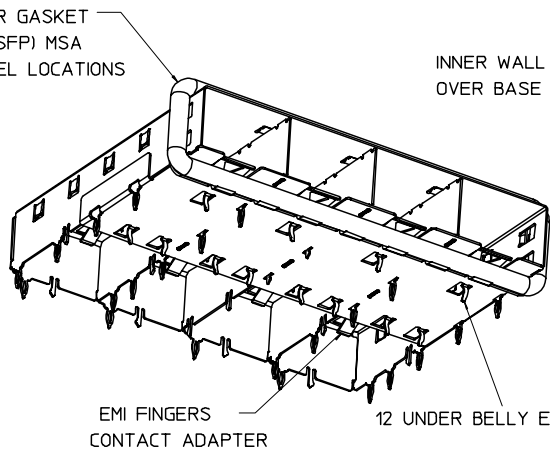
CHGD TOL ON SHT3 EC NO: USY2007-0426 DRWN:CCOX 2007/04/20 CHKD: 2007/04/25 APPR:RMAHMOOD07/04/30 REV	QUALITY SYMBOLS	GENERAL TOLERANCES (UNLESS SPECIFIED)	SCALE 1:1	DESIGN UNITS METRIC	THIRD ANGLE PROJECTION	REVISE ON CAD ONLY																														
	 	<table border="1"> <thead> <tr> <th></th> <th>mm</th> <th>INCH</th> </tr> </thead> <tbody> <tr> <td>4 PLACES</td> <td>± ---</td> <td>± ---</td> </tr> <tr> <td>3 PLACES</td> <td>± ---</td> <td>± .005</td> </tr> <tr> <td>2 PLACES</td> <td>± 0.13</td> <td>± .01</td> </tr> <tr> <td>1 PLACE</td> <td>± 0.25</td> <td>± ---</td> </tr> </tbody> </table>		mm	INCH	4 PLACES	± ---	± ---	3 PLACES	± ---	± .005	2 PLACES	± 0.13	± .01	1 PLACE	± 0.25	± ---	<table border="1"> <thead> <tr> <th colspan="2">DIMENSION STYLE</th> </tr> <tr> <th>IN/MM</th> <th>DATE</th> </tr> </thead> <tbody> <tr> <td>DRAWN BY</td> <td>KSIMONSO</td> </tr> <tr> <td>DATE</td> <td>2005/07/09</td> </tr> <tr> <td>CHECKED BY</td> <td>BRUSSELL</td> </tr> <tr> <td>DATE</td> <td>2005/07/09</td> </tr> <tr> <td>APPROVED BY</td> <td>BRUSSELL</td> </tr> <tr> <td>DATE</td> <td>2005/07/09</td> </tr> </tbody> </table>	DIMENSION STYLE		IN/MM	DATE	DRAWN BY	KSIMONSO	DATE	2005/07/09	CHECKED BY	BRUSSELL	DATE	2005/07/09	APPROVED BY	BRUSSELL	DATE	2005/07/09	TITLE	1X4 SFP CAGE ASSEMBLY W/ PRESS FIT PINS, PRE-PLATED
			mm	INCH																																
		4 PLACES	± ---	± ---																																
3 PLACES	± ---	± .005																																		
2 PLACES	± 0.13	± .01																																		
1 PLACE	± 0.25	± ---																																		
DIMENSION STYLE																																				
IN/MM	DATE																																			
DRAWN BY	KSIMONSO																																			
DATE	2005/07/09																																			
CHECKED BY	BRUSSELL																																			
DATE	2005/07/09																																			
APPROVED BY	BRUSSELL																																			
DATE	2005/07/09																																			
DRAFT WHERE APPLICABLE MUST REMAIN WITHIN DIMENSIONS	ANGULAR ± 1°	THIS DRAWING CONTAINS INFORMATION THAT IS PROPRIETARY TO MOLEX INCORPORATED AND SHOULD NOT BE USED WITHOUT WRITTEN PERMISSION	MOLEX INCORPORATED MATERIAL NO. 747280420 DOCUMENT NO. SD-74728-420 SHEET NO. 4 OF 4																																	

19 | 18 | 17 | 16 | 15 | 14 | 13 | 12 | 11 | 10 | 9 | 8 | 7 | 6 | 5 | 4 | 3 | 2 | 1

20 19 18 17 16 15 14 13 12 11 74728 9 8 7 6 5 4 3 2 1



360° ELASTOMER GASKET COMPLIES WITH (SFP) MSA BOARD AND BEZEL LOCATIONS



- NOTES:
1. PRESS FIT LEGS 0.120" LONG- 0.062 [1.57] MINIMUM PCB THICKNESS. FOR SINGLE SIDED USE ONLY.
  2. MATERIAL: COPPER ALLOY. PLATING: PRE-PLATED NICKEL
  3. REFERENCE DOCUMENTS: PRODUCT SPECIFICATION: PS-74728-000 COSMETIC SPECIFICATIONS: WI-HP-7-2774 AND WI-HPA-7-0093 TEST SUMMARY: TS-74728-0415
  4. MATES WITH SERIES 74728, LIGHT PIPE COVER ASSEMBLY.
  5. THIS PART MEETS THE RESTRICTION OF HAZARDOUS SUBSTANCES IN ELECTRICAL AND ELECTRONIC EQUIPMENT (ROHS) DIRECTIVE (2002/95/EC).

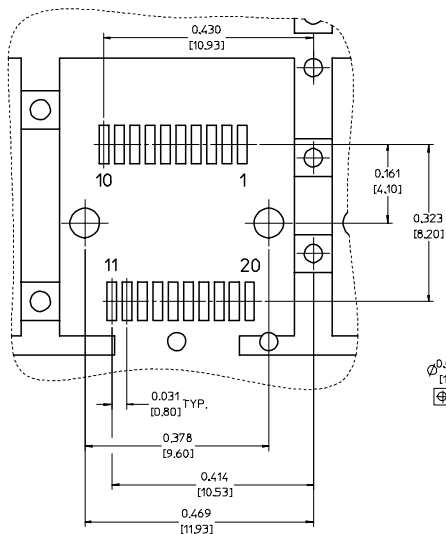
EC NO: 2006/08/01 DRWN:CCOX 2006/08/07 CHKD: 2006/08/07 APPR:BRUSSELL 2006/08/15 REV DESCRIPTION	QUALITY SYMBOLS	GENERAL TOLERANCES (UNLESS SPECIFIED)	SCALE 3:1	DESIGN UNITS METRIC	THIRD ANGLE PROJECTION	REVISE ON CAD ONLY
	4 PLACES ± --- ± --- 3 PLACES ± --- ± .005 2 PLACES ± 0.13 ± .01 1 PLACE ± 0.25 ± ---	DIMENSION STYLE IN/MM DRAWN BY DATE K SIMONSO 2005/07/09 CHECKED BY DATE BRUSSELL 2005/07/09 APPROVED BY DATE BRUSSELL 2005/07/09	DIMENSION STYLE IN/MM TITLE 1X4 SFP CAGE ASSEMBLY W/ PRESS FIT PINS, PRE-PLATED MOLEX INCORPORATED MATERIAL NO. 747280420 DOCUMENT NO. SD-74728-420 SHEET NO. 1 OF 4			
	ANGULAR ± 1° DRAFT WHERE APPLICABLE MUST REMAIN WITHIN DIMENSIONS	THIS DRAWING CONTAINS INFORMATION THAT IS PROPRIETARY TO MOLEX INCORPORATED AND SHOULD NOT BE USED WITHOUT WRITTEN PERMISSION				

19 18 17 16 15 14 13 12 11 10 9 8 7 6 5 4 3 2 1

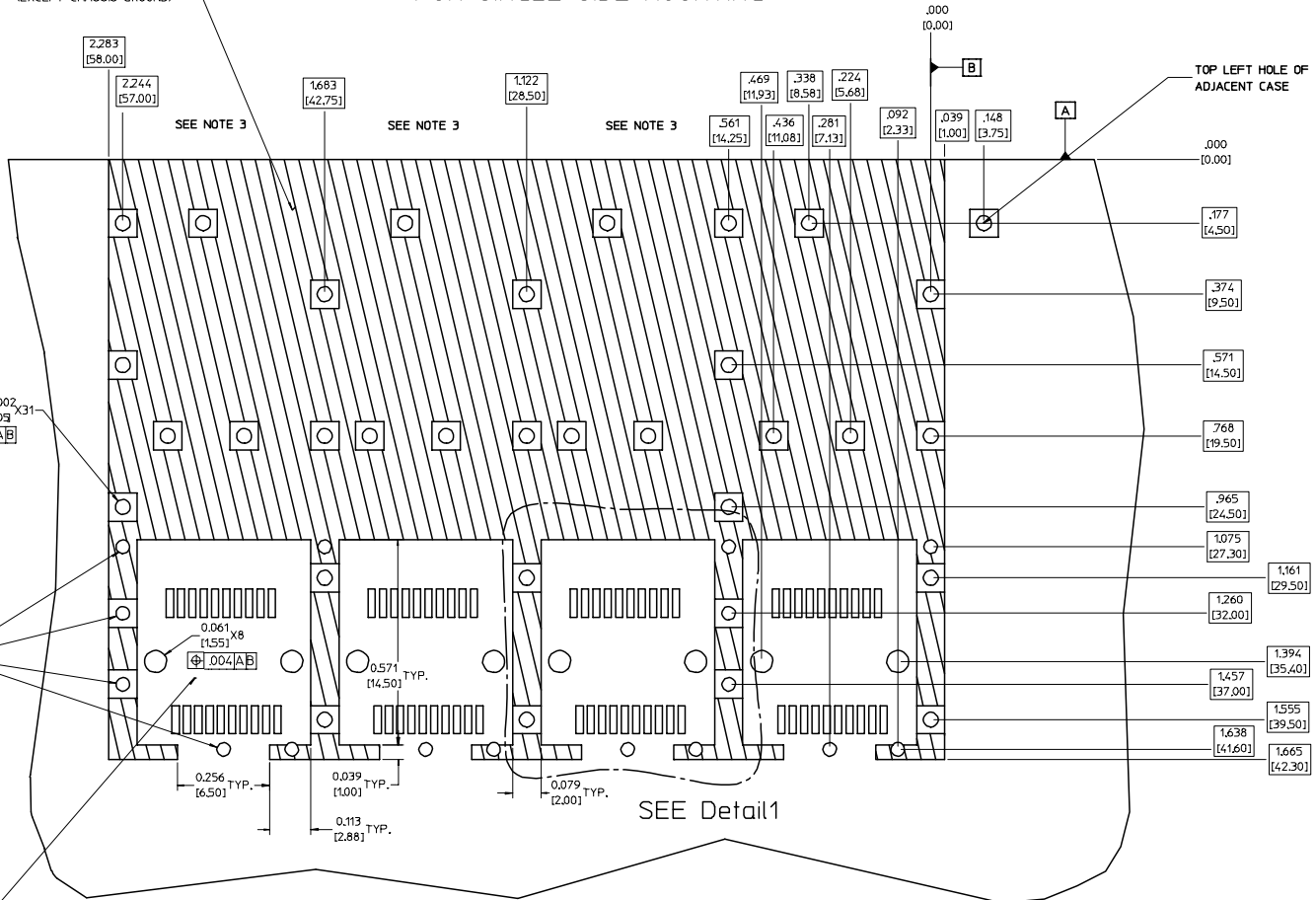
20 19 18 17 16 15 14 13 12 11 10 9 8 7 6 5 4 3 2 1

### PCB LAYOUT FOR SINGLE SIDE MOUNTING

Detail1  
SCALE 8:1



CROSS-HATCHED AREA DENOTES  
COMPONENT AND TRACE KEEP-OUT  
(EXCEPT CHASSIS GROUND)



THIS AREA DENOTES  
COMPONENT KEEP-OUT  
(TRACES ALLOWED)

SMALLER HOLE ON  
THESE FOUR ROWS ONLY

NOTES:

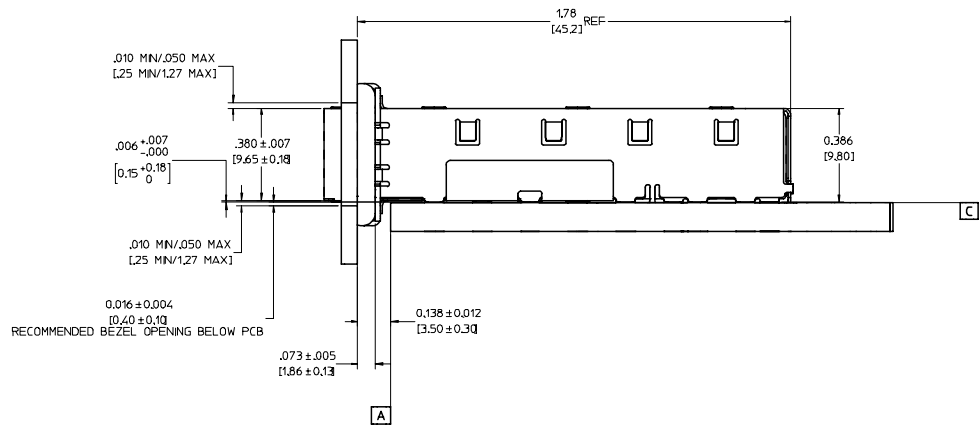
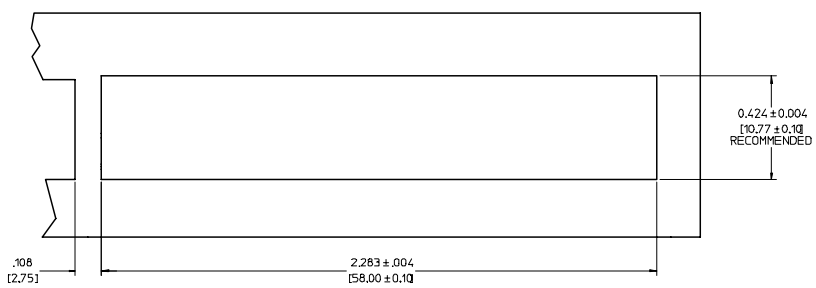
1. PADS AND VIAS GO TO CHASSIS GROUND, (34 PLACES).  
RECOMMENDED PADS TO BE 2mm SQUARE.
2. PLATING OPTIONAL FOR THROUGH HOLES, (12 PLACES).
3. HOLE PATTERN REPEATS FOR EACH PORT,  
SPACING BETWEEN PORTS IS 14.25mm.

EC NO: 2006/08/01 DRW:CCOX CHKD: 2006/08/07 APPR:BRUSSELL 2006/08/15 REV DESCRIPTION	QUALITY SYMBOLS	GENERAL TOLERANCES (UNLESS SPECIFIED)	SCALE 6:1	DESIGN UNITS METRIC	THIRD ANGLE PROJECTION	REVISE ON CAD ONLY															
	$\nabla .0$ $\nabla \epsilon .0$	<table border="1"> <tr> <th></th> <th>mm</th> <th>INCH</th> </tr> <tr> <td>4 PLACES</td> <td>± .005</td> <td>± .0005</td> </tr> <tr> <td>3 PLACES</td> <td>± .01</td> <td>± .001</td> </tr> <tr> <td>2 PLACES</td> <td>± .02</td> <td>± .002</td> </tr> <tr> <td>1 PLACE</td> <td>± .05</td> <td>± .005</td> </tr> </table>		mm	INCH	4 PLACES	± .005	± .0005	3 PLACES	± .01	± .001	2 PLACES	± .02	± .002	1 PLACE	± .05	± .005	DIMENSION STYLE IN/MM	TITLE 1X4 SFP CAGE ASSEMBLY W/ PRESS FIT PINS, PRE-PLATED	MATERIAL NO. 747280420 DOCUMENT NO. SD-74728-420 SHEET NO. 2 OF 4	
		mm	INCH																		
	4 PLACES	± .005	± .0005																		
3 PLACES	± .01	± .001																			
2 PLACES	± .02	± .002																			
1 PLACE	± .05	± .005																			
DRAFT WHERE APPLICABLE MUST REMAIN WITHIN DIMENSIONS		APPROVED BY BRUSSELL 2005/07/09	CHECKED BY BRUSSELL 2005/07/09	MATERIAL NO. 747280420 DOCUMENT NO. SD-74728-420 SHEET NO. 2 OF 4																	
THIS DRAWING CONTAINS INFORMATION THAT IS PROPRIETARY TO MOLEX INCORPORATED AND SHOULD NOT BE USED WITHOUT WRITTEN PERMISSION																					

19 18 17 16 15 14 13 12 11 10 9 8 7 6 5 4 3 2 1

20 19 18 17 16 15 14 13 12 11 74728 9 8 7 6 5 4 3 2 1

BEZEL AND BOARD POSITION DIMENSIONS FOR SINGLE SIDE MOUNTING



EC NO: 2006/08/01 DRW: CCX CHKD: 2006/08/07 APPR: BRUSSELL 2006/08/15 REV DESCRIPTION	QUALITY SYMBOLS	GENERAL TOLERANCES (UNLESS SPECIFIED)	SCALE 4:1	DESIGN UNITS METRIC	THIRD ANGLE PROJECTION	REVISE ON CAD ONLY	
	▽ .0 ∇ .0	4 PLACES ± .005 3 PLACES ± .005 2 PLACES ± 0.13 ± .01 1 PLACE ± 0.25 ± .01	DIMENSION STYLE IN/MM DRAWN BY K SIMONSO DATE 2005/07/09 CHECKED BY BRUSSELL DATE 2005/07/09 APPROVED BY BRUSSELL DATE 2005/07/09	TITLE 1X4 SFP CAGE ASSEMBLY W/ PRESS FIT PINS, PRE-PLATED MOLEX INCORPORATED MATERIAL NO. 747280420 DOCUMENT NO. SD-74728-420 SHEET NO. 3 OF 4			
		DRAFT WHERE APPLICABLE MUST REMAIN WITHIN DIMENSIONS		THIS DRAWING CONTAINS INFORMATION THAT IS PROPRIETARY TO MOLEX INCORPORATED AND SHOULD NOT BE USED WITHOUT WRITTEN PERMISSION			

19 18 17 16 15 14 13 12 11 10 9 8 7 6 5 4 3 2 1

20 | 19 | 18 | 17 | 16 | 15 | 14 | 13 | 12 | 11 | 74728 | 9 | 8 | 7 | 6 | 5 | 4 | 3 | 2 | 1

DATE	REV	CHANGES	COMMENTS
2005/06/09	1	PRELIMINARY DOCUMENT	N/A
2005/07/09	A	INITIAL RELEASE	N/A
2006/08/07	B	ADDED NOTE IDENTIFYING HOLE ON ADJACENT CASE	N/A

L  
K  
J  
I  
H  
G  
F  
E  
D  
C  
B  
A

L  
K  
J  
I  
H  
G  
F  
E  
D  
C  
B  
A

EC NO: 2006/08/01 DRWN:CCOX CHKD: 2006/08/07 APPR:BRUSSELL 2006/08/15 REV:	QUALITY SYMBOLS	GENERAL TOLERANCES (UNLESS SPECIFIED)	SCALE 1:1	DESIGN UNITS METRIC	THIRD ANGLE PROJECTION	REVISE ON CAD ONLY																												
	▽.0	<table border="1"> <thead> <tr> <th></th> <th>mm</th> <th>INCH</th> </tr> </thead> <tbody> <tr> <td>4 PLACES</td> <td>±.001</td> <td>±.0005</td> </tr> <tr> <td>3 PLACES</td> <td>±.002</td> <td>±.001</td> </tr> <tr> <td>2 PLACES</td> <td>±.005</td> <td>±.002</td> </tr> <tr> <td>1 PLACE</td> <td>±.013</td> <td>±.005</td> </tr> </tbody> </table>		mm	INCH	4 PLACES	±.001	±.0005	3 PLACES	±.002	±.001	2 PLACES	±.005	±.002	1 PLACE	±.013	±.005	<table border="1"> <thead> <tr> <th colspan="2">DIMENSION STYLE</th> </tr> </thead> <tbody> <tr> <td>DRAWN BY</td> <td>DATE</td> </tr> <tr> <td>KSIMONSO</td> <td>2005/07/09</td> </tr> <tr> <td>CHECKED BY</td> <td>DATE</td> </tr> <tr> <td>BRUSSELL</td> <td>2005/07/09</td> </tr> <tr> <td>APPROVED BY</td> <td>DATE</td> </tr> <tr> <td>BRUSSELL</td> <td>2005/07/09</td> </tr> </tbody> </table>	DIMENSION STYLE		DRAWN BY	DATE	KSIMONSO	2005/07/09	CHECKED BY	DATE	BRUSSELL	2005/07/09	APPROVED BY	DATE	BRUSSELL	2005/07/09	TITLE	
		mm	INCH																															
	4 PLACES	±.001	±.0005																															
3 PLACES	±.002	±.001																																
2 PLACES	±.005	±.002																																
1 PLACE	±.013	±.005																																
DIMENSION STYLE																																		
DRAWN BY	DATE																																	
KSIMONSO	2005/07/09																																	
CHECKED BY	DATE																																	
BRUSSELL	2005/07/09																																	
APPROVED BY	DATE																																	
BRUSSELL	2005/07/09																																	
▽.0	ANGULAR ± 1°	DRAFT WHERE APPLICABLE MUST REMAIN WITHIN DIMENSIONS		MOLEX INCORPORATED MATERIAL NO. 747280420 DOCUMENT NO. SD-74728-420 SHEET NO. 4 OF 4																														
THIS DRAWING CONTAINS INFORMATION THAT IS PROPRIETARY TO MOLEX INCORPORATED AND SHOULD NOT BE USED WITHOUT WRITTEN PERMISSION																																		

19 | 18 | 17 | 16 | 15 | 14 | 13 | 12 | 11 | 10 | 9 | 8 | 7 | 6 | 5 | 4 | 3 | 2 | 1