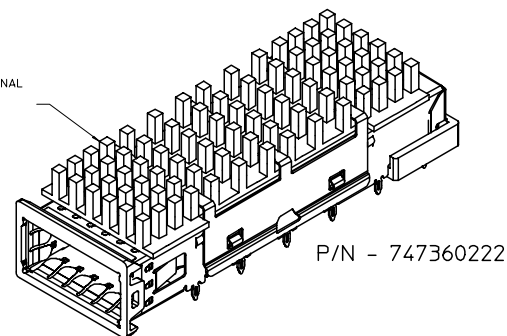
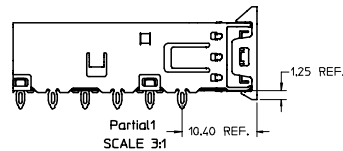
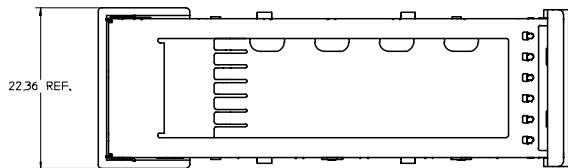


20 19 18 17 16 15 14 13 12 11 74736 9 8 7 6 5 4 3 2 1

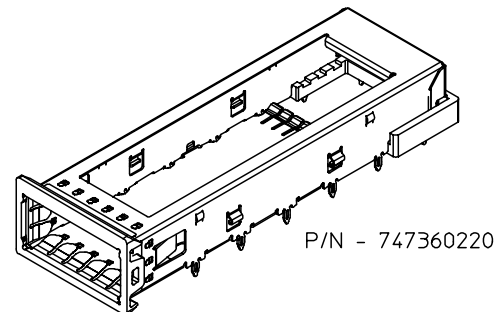
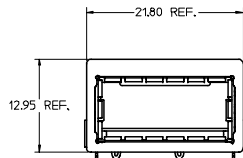
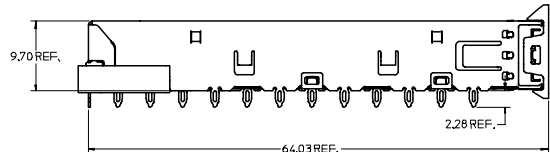
L
K
J
I
H
G
F
E
D
C
B
A

L
K
J
I
H
G
F
E
D
C
B
A

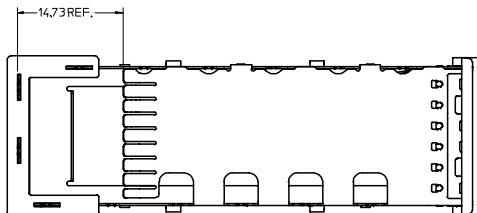


HEATSINK SINK AND CLIP ARE OPTIONAL
SEE CHART FOR HEATSINK OPTIONS
CUSTOM HEATSINKS ARE AVAILABLE

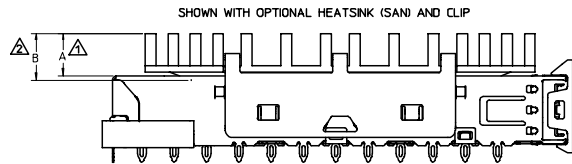
P/N - 747360222



P/N - 747360220



COMPLIANT EMI GASKET



SHOWN WITH OPTIONAL HEATSINK (SAN) AND CLIP

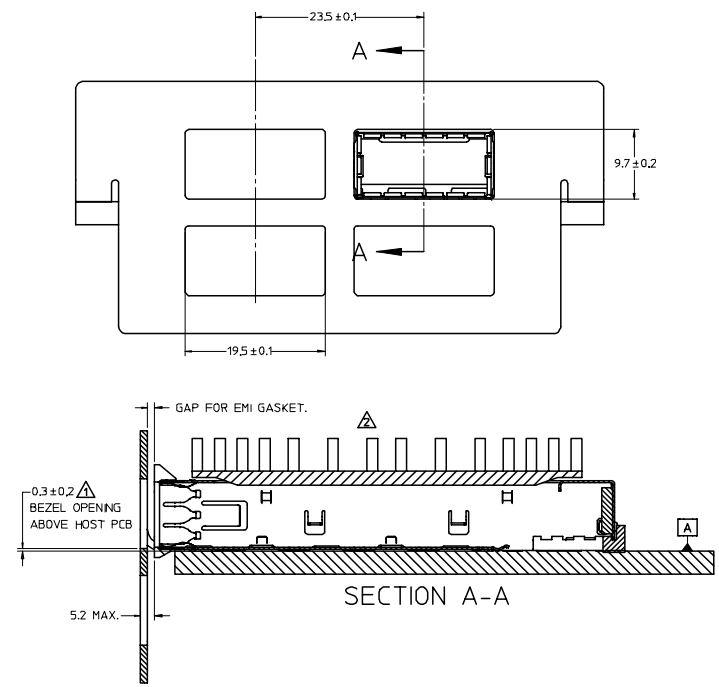
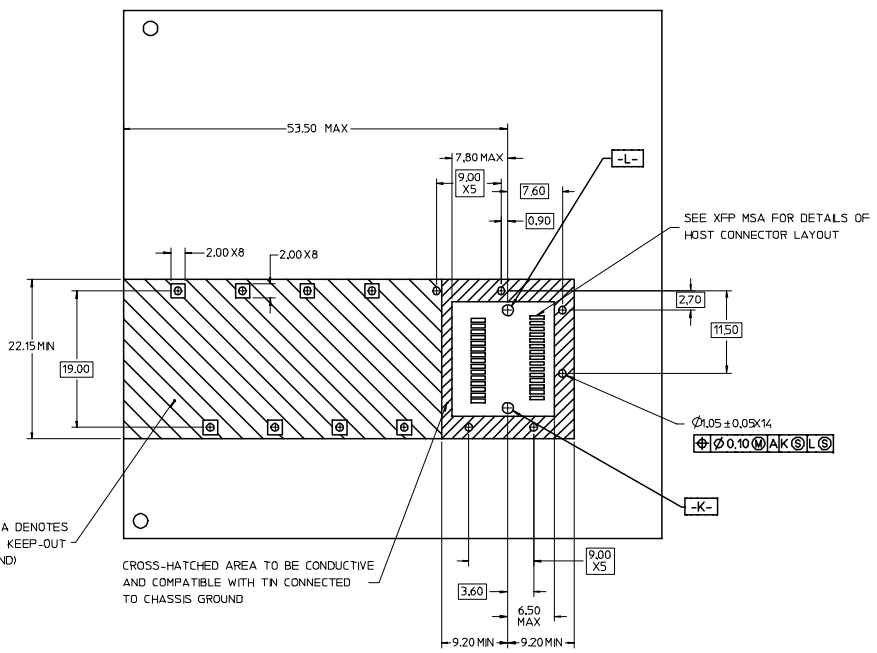
- ▲ MAXIMUM HEIGHT OF HEATSINK WITH MODULE INSERTED
- ▲ OVERALL HEIGHT OF HEATSINK
- 3. OTHER HEATSINK DESIGNS ARE AVAILABLE INCLUDING CUSTOM DESIGNS

PART NUMBER FOR XFP CAGE ASSEMBLY & PARTS

| P/N | DIM A | DIM B | DESCRIPTION | POWER LEVEL | THERMAL RESISTANCE @200 LFM |
|-----------|-------|-------|------------------------------------|-------------|-----------------------------|
| 747360220 | N/A | N/A | XFP CAGE WITH NO HEATSINK OR CLIP | N/A | N/A |
| 747360221 | 4.0 | 4.2 | XFP CAGE WITH PCI HEATSINK | UP TO 1.5W | <18.0 C/W |
| 747360222 | 6.3 | 6.5 | XFP CAGE WITH SAN HEATSINK (SHOWN) | UP TO 2.5W | <11.5 C/W |
| 747360223 | 13.3 | 13.5 | XFP CAGE WITH TALL HEATSINK | UP TO 3.5W | <8.0 C/W |
| 747360230 | N/A | N/A | HEATSINK CLIP ONLY | N/A | N/A |
| 747360240 | N/A | N/A | PCI HEATSINK ONLY | UP TO 1.5W | <18.0 C/W |
| 747360241 | N/A | N/A | SAN HEATSINK ONLY | UP TO 2.5W | <11.5 C/W |
| 747360242 | N/A | N/A | TALL HEATSINK ONLY | UP TO 3.5W | <8.0 C/W |

| | | | | | | |
|---|-----------------|--|--|---|--|--------------------|
| EC NO: 07/02/22 DRW: CCOX CHKD: 07/03/02 APPR: RMAHMOOD/07/03/02 REV: | QUALITY SYMBOLS | GENERAL TOLERANCES (UNLESS SPECIFIED) | SCALE 3:1 | DESIGN UNITS METRIC | THIRD ANGLE PROJECTION | REVISE ON CAD ONLY |
| | 0.0 0.0 | 4 PLACES ± --- ± --- 3 PLACES ± --- ± --- 2 PLACES ± 0.10 ± --- 1 PLACE ± --- ± --- | DIMENSION STYLE MM ONLY | TITLE | XFP CAGE ASSEMBLY | |
| | | ANGULAR ± 1 ° | DRAWN BY K LLOYD DATE 2004/05/14 CHECKED BY BRUSSELL DATE 2004/08/05 APPROVED BY BRUSSELL DATE 2004/08/05 | DIMENSION STYLE MM ONLY | MOLEX INCORPORATED SEE CHART SD-74736-220 | |
| | | DRAFT WHERE APPLICABLE MUST REMAIN WITHIN DIMENSIONS | MATERIAL NO. [SEE CHART] DOCUMENT NO. SD-74736-220 SHEET NO. 1 OF 2 | THIS DRAWING CONTAINS INFORMATION THAT IS PROPRIETARY TO MOLEX INCORPORATED AND SHOULD NOT BE USED WITHOUT WRITTEN PERMISSION | | |

19 18 17 16 15 14 13 12 11 10 9 8 7 6 5 4 3 2 1



△ FOR PCI APPLICATIONS RECOMMENDED DIMENSION IS 0.4 ± 0.1
 △ FLAT ROCK TOOLING CAN BE USED TO PRESS CAGE IN WITH OR WITHOUT HEATSINK
 BOTTOM OF PCB SHOULD BE PROPERLY SUPPORTED
 INSERTION FORCE MAX: 100LBS (WITH ANY PCB PLATING)

| | | | | | | |
|--|---------------------|---------------------------------------|---|----------------------|-------------------------|---|
| EC NO: 07/02/22 DRWN:CCOX CHYD: 2007/03/02 APPR:RMAHMOOZ07/03/02 REV DESCRIPTION | QUALITY SYMBOLS | GENERAL TOLERANCES (UNLESS SPECIFIED) | SCALE 3:1 | DESIGN UNITS METRIC | THIRD ANGLE PROJECTION | REVISE ON CAD ONLY |
| | ▽ 0 | 4 PLACES ± --- ± --- | mm | MM ONLY | TITLE XFP CAGE ASSEMBLY | |
| | ▽ 0 | 3 PLACES ± --- ± --- | INCH | DRAWN BY KLOYD | DATE 2004/05/14 | |
| | | 2 PLACES ± 0.10 ± --- | | CHECKED BY BRUSSELL | DATE 2004/08/05 | |
| | 1 PLACE ± --- ± --- | ANGULAR ± 1 ° | DRAFT WHERE APPLICABLE MUST REMAIN WITHIN DIMENSIONS | APPROVED BY BRUSSELL | DATE 2004/08/05 | MOLEX INCORPORATED MATERIAL NO. SEE CHART DOCUMENT NO. SD-74736-220 SHEET NO. 2 OF 2 |
| | | | THIS DRAWING CONTAINS INFORMATION THAT IS PROPRIETARY TO MOLEX INCORPORATED AND SHOULD NOT BE USED WITHOUT WRITTEN PERMISSION | | | |