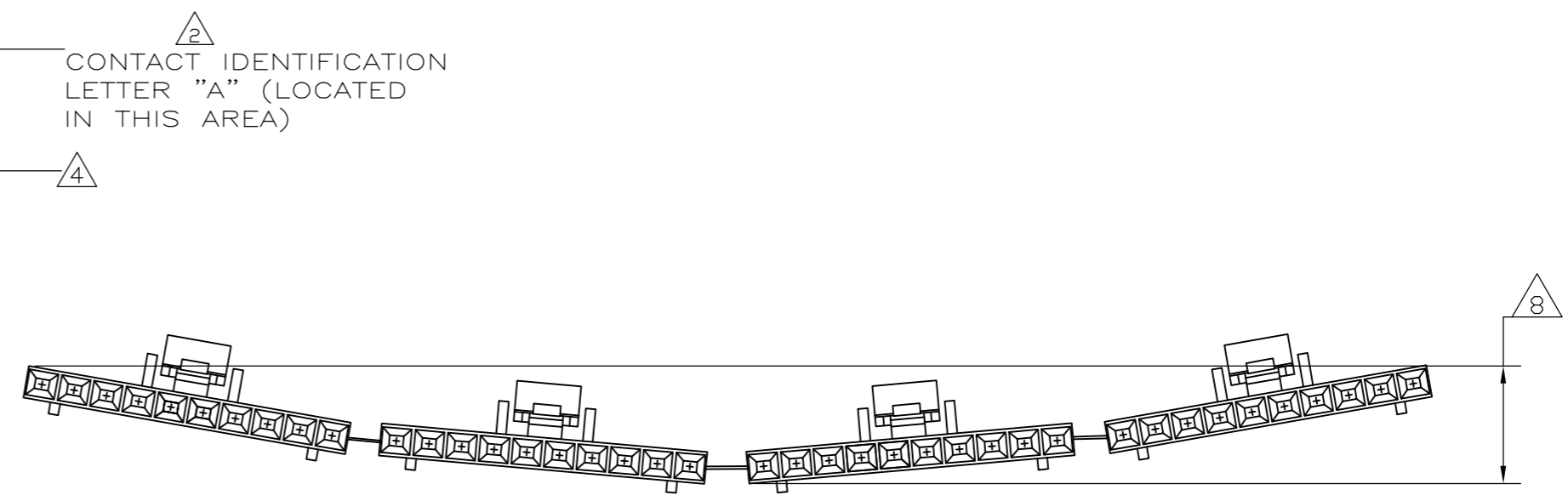
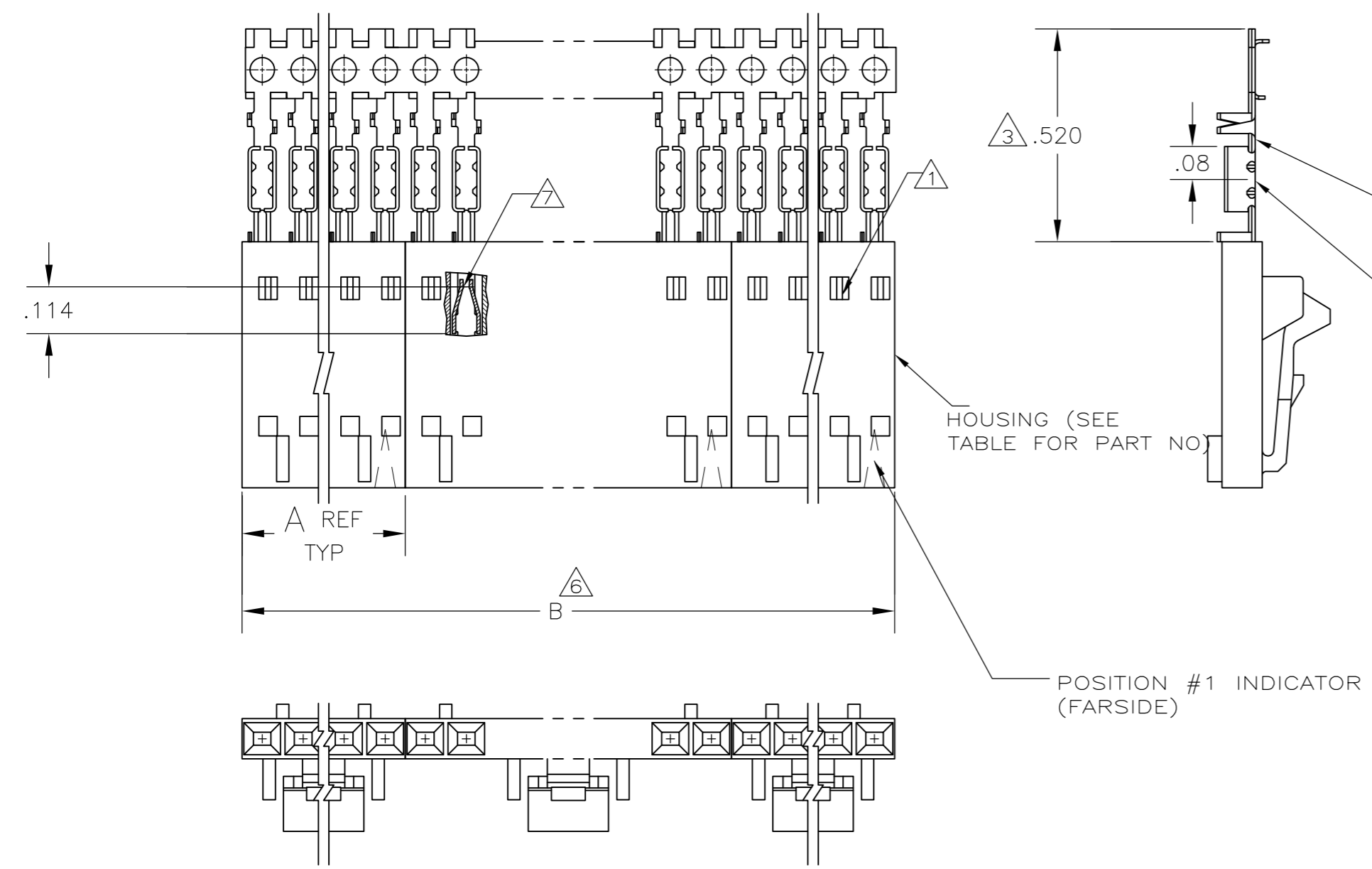


THIS DRAWING IS UNPUBLISHED. RELEASED FOR PUBLICATION  
 © COPYRIGHT BY TYCO ELECTRONICS CORPORATION. ALL RIGHTS RESERVED.

LOC	DIST	REVISIONS					
		P	LTR	DESCRIPTION	DATE	DWN	APVD
AD	00		M	EC 0G3C 0734 04	16DEC04	BSV	—
			M1	REVISED PER ECO-09-020689	02SEP09	KK	AEG



EXAMPLE: STRIP ASSEMBLY  
SCALE 2:1

- 1 CONTACTS ARE LATCHED INTO THE PRELOAD WINDOWS.
- 2 USE WITH #26-#30 AWG WIRE SIZE, .054/.030 INSULATION DIAMETER, .015 MAXIMUM INSULATION THICKNESS.
- 3 THE DIMENSION APPLIES WITH THE FORWARD STOP IN CONTACT WITH THE HOUSING SURFACE
- 4 POINT OF MEASUREMENT FOR PLATING THICKNESS
- 5. FOR INDIVIDUAL ASSEMBLIES SEE PART NUMBER 103640
- 6 ASSEMBLIES ARE JOINED BY THE CARRIER STRIP. ORDER QUANTITY REFLECTS TOTAL NUMBER OF INDIVIDUAL ASSEMBLIES REQUIRED. SEE TABLE FOR NUMBER OF ASSEMBLIES PER STRIP.
- 7 POINT OF MEASUREMENT FOR PLATING THICKNESS (INSIDE BEAMS)
- 8 MAXIMUM ALLOWABLE BOW OF ASSEMBLY NOT TO EXCEED .055.
- 9 .000015 GOLD IN THE CONTACT AREA. .000050-.000100 BRIGHT TIN-LEAD ON THE TERMINATION AREA, ALL OVER .000050 NICKEL.
- 10 .000015 GOLD IN THE CONTACT AREA. .000050-.000100 BRIGHT TIN ON THE TERMINATION AREA, ALL OVER .000050 NICKEL.
- 11 PRELIMINARY PART - NOT RELEASED FOR PRODUCTION.
- 12 .000015 GOLD IN THE CONTACT AREA. .000050-.000100 MATTE TIN ON THE TERMINATION AREA, ALL OVER .000050 NICKEL.
- 13 OBSOLETE PARTS: OBSOLETE CIS STREAMLINING PER D.RENAUD/D.SINISI

13	OBSOLETE	12	2	2.40	1.198	1-104257-1	12	6-103960-1
13	OBSOLETE	12	2	2.20	1.098	1-104257-0	11	6-103960-0
		12	2	2.00	.998	104257-9	10	5-103960-9
13	OBSOLETE	12	2	1.80	.898	104257-8	9	5-103960-8
		12	2	1.60	.798	104257-7	8	5-103960-7
		12	2	1.40	.698	104257-6	7	5-103960-6
		12	4	2.39	.598	104257-5	6	5-103960-5
		12	4	1.99	.498	104257-4	5	5-103960-4
		12	5	1.99	.398	104257-3	4	5-103960-3
		12	8	2.40	.298	104257-2	3	5-103960-2
		12	10	2.00	.198	104257-1	2	5-103960-1
		11	5	1.99	.398	104257-3	4	1-103960-2
13	OBSOLETE	9	2	2.40	1.198	1-104257-1	12	1-103960-1
		9	2	2.20	1.098	1-104257-0	11	1-103960-0
		9	2	2.00	.998	104257-9	10	103960-9
		9	2	1.80	.898	104257-8	9	103960-8
		9	2	1.60	.798	104257-7	8	103960-7
		9	2	1.40	.698	104257-6	7	103960-6
		9	4	2.39	.598	104257-5	6	103960-5
		9	4	1.99	.498	104257-4	5	103960-4
		9	5	1.99	.398	104257-3	4	103960-3
		9	8	2.40	.298	104257-2	3	103960-2
		9	10	2.00	.198	104257-1	2	103960-1
PLATING		6	B	A		HOUSING PART NUMBER	NO OF POSN	ASSEMBLY PART NUMBER ON STRIP

THIS DRAWING IS A CONTROLLED DOCUMENT.

DWN L A MAYER 11-4-86  
 CHK P de JONG 11-4-86  
 APVD P de JONG 11-4-86

TOLERANCES UNLESS OTHERWISE SPECIFIED:  
 0 PLC ± -  
 1 PLC ± -  
 2 PLC ± -  
 3 PLC ± -  
 4 PLC ± -  
 ANGLES ± -  
 FINISH SEE TABLE

108-25034  
 APPLICATION SPEC  
 114-25026

WEIGHT -

CUSTOMER DRAWING

**Tyco Electronics** Tyco Electronics Corporation  
 Harrisburg, Pa 17105-3608

NAME RCPT ASSY, AMPMODU MTE, SINGLE ROW, .100 C/L, LATCHED & POLARIZED FOR #26-#30 AWG WIRE SIZE, STRIP FORM

SIZE A2 CAGE CODE 00779 DRAWING NO C=103960 RESTRICTED TO -

SCALE 3:1 SHEET 1 OF 1 REV M1