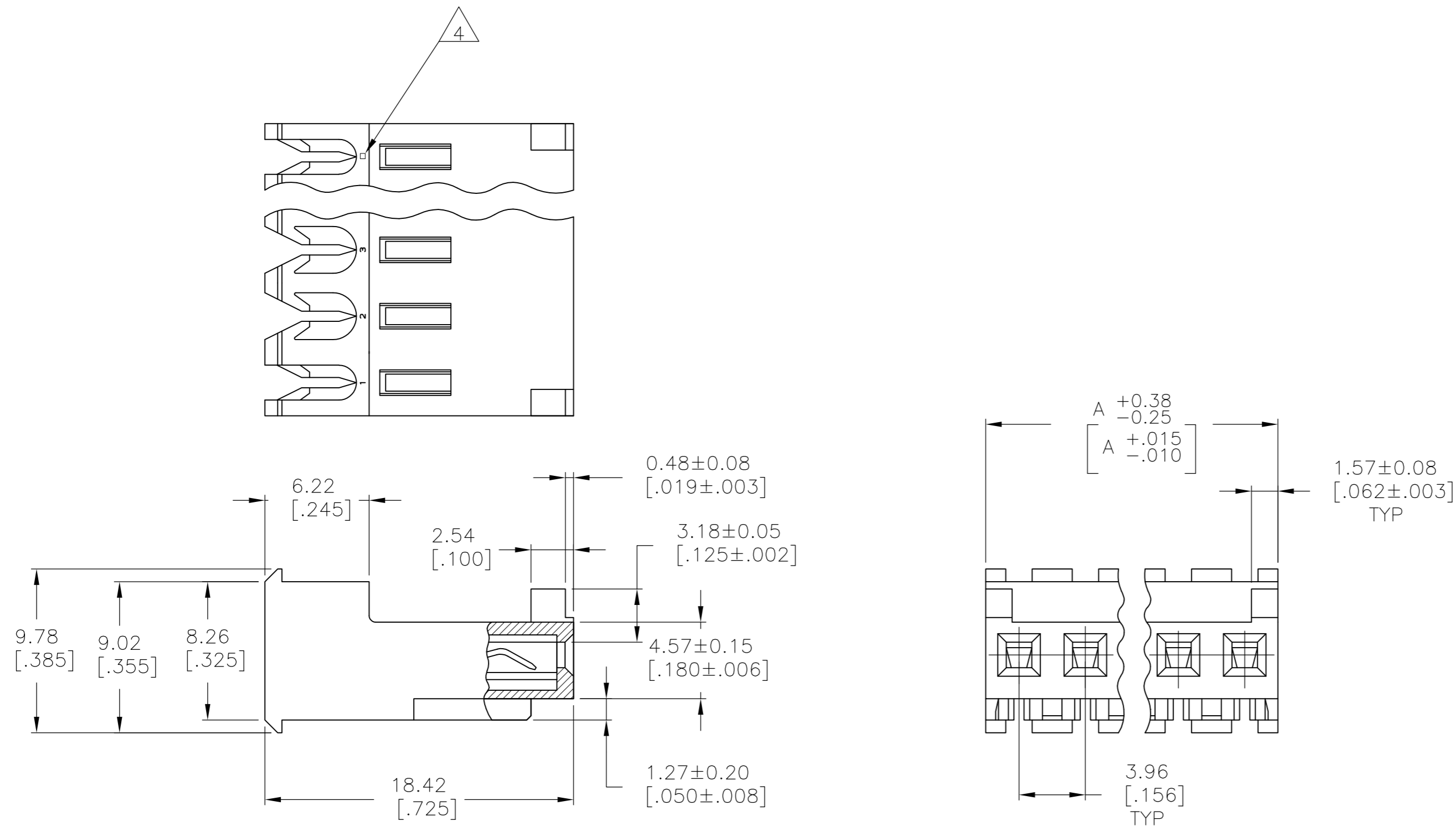


THIS DRAWING IS UNPUBLISHED. RELEASED FOR PUBLICATION
 © COPYRIGHT BY TYCO ELECTRONICS CORPORATION. ALL RIGHTS RESERVED.

LOC	DIST	REVISIONS					
		P	LTR	DESCRIPTION	DATE	DWN	APVD
CM	54		C	ECO-07-012852	04JUN07	KW	DB
			C1	REVISED PER ECO-09-023313	09OCT09	KK	AEG



55.47	[2.184]	14	4-644469-4
51.51	[2.028]	13	4-644469-3
47.55	[1.872]	12	4-644469-2
43.59	[1.716]	11	4-644469-1
39.62	[1.560]	10	4-644469-0
35.66	[1.404]	9	3-644469-9
31.70	[1.248]	8	3-644469-8
27.74	[1.092]	7	3-644469-7
23.77	[.936]	6	3-644469-6
19.81	[.780]	5	3-644469-5
15.85	[.624]	4	3-644469-4
11.89	[.468]	3	3-644469-3
7.92	[.312]	2	3-644469-2

1 MATERIAL: CONNECTOR - NYLON UL94V-2 (ORANGE).
 CONTACTS - 0.30[.012] THICK COPPER ALLOY
 BRIGHT TIN-LEAD 0.00203[.000080] MIN THICK FOR CONTACTS
 644469-2 THRU 1-644469-4
 MATTE WHISKER MITIGATED TIN 0.00203[.000080] MIN THICKNESS
 OVER NICKEL UNDERPLATE FOR 3-644469-2 THRU 4-644469-4

2. CONTACTS ACCEPT 18 AWG WIRE WITH 2.41[.095] MAX INSULATION DIAMETER.
 3. CONTACTS MUST ACCEPT 1.14±0.03 [.045±.001] SQUARE POST AND REMAIN LOCKED IN POSITION.

4 IDENTIFICATION NUMBER FOR LAST CIRCUIT MAY NOT APPEAR ON ALL ASSEMBLIES.

5. DIMENSIONS IN BRACKETS ARE IN INCHES.

6. HOUSING FEATURES ARE: FEED-THRU WITHOUT LOCKING RAMP AND WITH POLARIZING TAB.

7 OBSOLETE PARTS: OBSOLETE CIS STREAMLINING PER D.RENAUD/D.SINISI

7	SUPERSEDED	55.47	[2.184]	14	1-644469-4
7	SUPERSEDED	51.51	[2.028]	13	1-644469-3
		47.55	[1.872]	12	1-644469-2
7	SUPERSEDED	43.59	[1.716]	11	1-644469-1
7	SUPERSEDED	39.62	[1.560]	10	1-644469-0
7	SUPERSEDED	35.66	[1.404]	9	644469-9
7	SUPERSEDED	31.70	[1.248]	8	644469-8
7	SUPERSEDED	27.74	[1.092]	7	644469-7
7	SUPERSEDED	23.77	[.936]	6	644469-6
7	SUPERSEDED	19.81	[.780]	5	644469-5
7	SUPERSEDED	15.85	[.624]	4	644469-4
7	SUPERSEDED	11.89	[.468]	3	644469-3
7	SUPERSEDED	7.92	[.312]	2	644469-2
		DIM A		NO OF CIRCUITS	PART NO

METRIC

THIS DRAWING IS A CONTROLLED DOCUMENT.		DWN B. LEWIS 12 FEB 91	Tyco Electronics Corporation Harrisburg, Pa 17105-3608	
DIMENSIONS: mm [INCHES]		CHK R. SWING 12 FEB 91	NAME D.R. CLARK 20 FEB 91	
TOLERANCES UNLESS OTHERWISE SPECIFIED: 0 PLC ± - 1 PLC ± - 2 PLC ± - 3 PLC ± - 4 PLC ± - ANGLES ± -		APVD D.R. CLARK 20 FEB 91	PRODUCT SPEC 108-1051	
MATERIAL 1		FINISH 1	APPLICATION SPEC 114-1020	SIZE A2
		WEIGHT -	CAGE CODE 00779	DRAWING NO C=644469
		CUSTOMER DRAWING	SCALE 4:1	SHEET 1 OF 1
			REV C1	RESTRICTED TO -