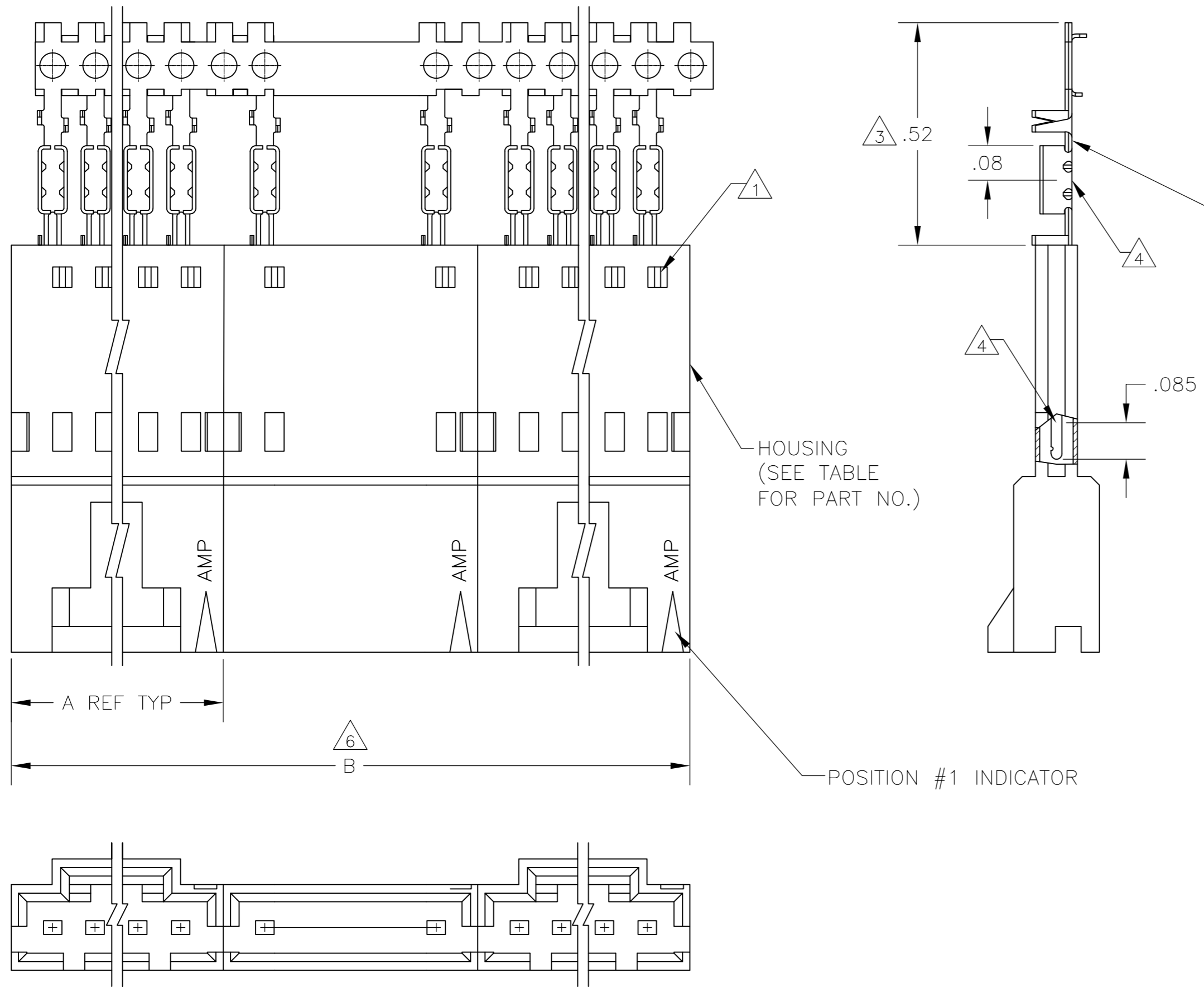


THIS DRAWING IS UNPUBLISHED. RELEASED FOR PUBLICATION
 © COPYRIGHT BY TYCO ELECTRONICS CORPORATION. ALL RIGHTS RESERVED.

LOC	DIST	REVISIONS			
P	LTR	DESCRIPTION	DATE	DWN	APVD
	M	EC 0G3C 0766 04	28DEC04	BSV	JLG
	M1	REVISED PER ECO-09-021826	29AUG09	KK	AEG



△11	2	2.59	1.295	1-103653-1	12	6-103945-1
△11	2	2.39	1.195	1-103653-0	11	6-103945-0
△11	2	2.19	1.095	103653-9	10	5-103945-9
△11	2	1.99	.995	103653-8	9	5-103945-8
△11	2	1.79	.895	103653-7	8	5-103945-7
△11	3	2.39	.795	103653-6	7	5-103945-6
△11	2	1.39	.695	103653-5	6	5-103945-5
△11	4	2.38	.595	103653-4	5	5-103945-4
△11	4	1.98	.495	103653-3	4	5-103945-3
△11	5	1.98	.395	103653-2	3	5-103945-2
△11	8	2.36	.295	103653-1	2	5-103945-1
△10	△9	4	1.98	103653-3	4	1-103945-7
△10	△9	5	1.98	103653-2	3	1-103945-6
OBSOLETE	△9	2	2.19	103653-9	10	1-103945-5
△10	△9	2	1.39	103653-5	6	1-103945-4
OBSOLETE	△9	4	2.38	103653-4	5	1-103945-3
△10	△9	8	2.36	103653-1	2	1-103945-2
△8	2	2.59	1.295	1-103653-1	12	1-103945-1
△8	2	2.39	1.195	1-103653-0	11	1-103945-0
△8	2	2.19	1.095	103653-9	10	103945-9
△8	2	1.99	.995	103653-8	9	103945-8
△8	2	1.79	.895	103653-7	8	103945-7
△8	3	2.39	.795	103653-6	7	103945-6
△8	2	1.39	.695	103653-5	6	103945-5
△8	4	2.38	.595	103653-4	5	103945-4
△8	4	1.98	.495	103653-3	4	103945-3
△8	5	1.98	.395	103653-2	3	103945-2
△8	8	2.36	.295	103653-1	2	103945-1
PLATING	△6	B	A	HOUSING PART NUMBER	NO OF POSN	ASSEMBLY POSN NUMBER ON STRIP

- △1 CONTACTS ARE LATCHED INTO THE PRELOAD WINDOWS
- △2 USE WITH #22-#26 AWG WIRE SIZE, .054/.030 INSULATION DIAMETER, .015 MAXIMUM INSULATION THICKNESS
- △3 THE DIMENSION APPLIES WITH THE FORWARD PRELOAD STOP IN CONTACT WITH THE HOUSING SURFACE
- △4 POINT OF MEASUREMENT FOR PLATING THICKNESS
- 5 FOR INDIVIDUAL ASSEMBLIES SEE PART NUMBER 103660
- △6 ASSEMBLIES ARE JOINED BY THE CARRIER STRIP. ORDER QUANTITY REFLECTS TOTAL NUMBER OF INDIVIDUAL ASSEMBLIES REQUIRED. SEE TABLE FOR NUMBER OF ASSEMBLIES PER STRIP.
- △7 MATERIAL- HOUSING: FLAME RETARDANT THERMOPLASTIC, COLOR: BLACK PINS: PHOS. BRONZE
- △8 FINISH- PINS: .000015 GOLD IN THE CONTACT AREA, .000050-.000100 BRIGHT TIN-LEAD ON THE TERMINATION AREA, OVER .000050 NICKEL.
- △9 FINISH- PINS: .000015 GOLD IN THE CONTACT AREA, .000050-.000100 BRIGHT TIN ON THE TERMINATION AREA, OVER .000050 NICKEL.
- △10 PRELIMINARY PART - NOT RELEASED FOR PRODUCTION.
- △11 FINISH- PINS: .000015 GOLD IN THE CONTACT AREA, .000050-.000100 MATTE TIN ON THE TERMINATION AREA, OVER .000050 NICKEL.
- △12 OBSOLETE PARTS: OBSOLETE CIS STREAMLINING PER D.RENAUD/D.SINISI

△12 SUPERSEDED BY 5-103945-8

THIS DRAWING IS A CONTROLLED DOCUMENT.

DWN	R.BROWN	26JUL00
CHK	K.WRIGHT	26JUL00
APVD	K.WRIGHT	26JUL00

Tyco Electronics Corporation
Harrisburg, Pa 17105-3608

NAME: SHROUDED PIN ASSY, AMPMODU MTE, SINGLE ROW, .100 CL, POLARIZED, W/ LATCH WINDOWS, FOR #22-#26 AWG WIRE SIZE, STRIP FORM

SIZE: A2 CAGE CODE: 00779 DRAWING NO: 103945 RESTRICTED TO: -

SCALE: 4:1 SHEET: 1 OF 1 REV: M1