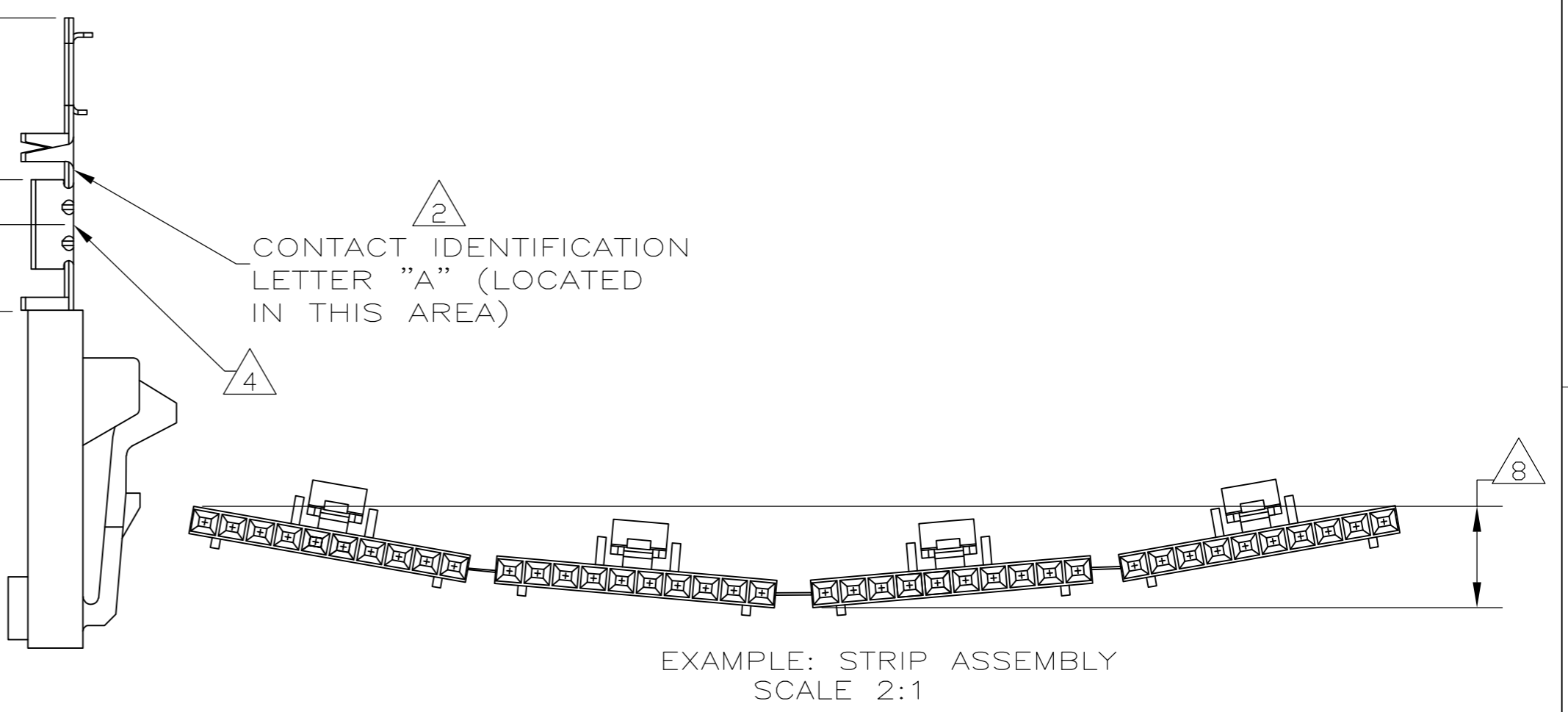
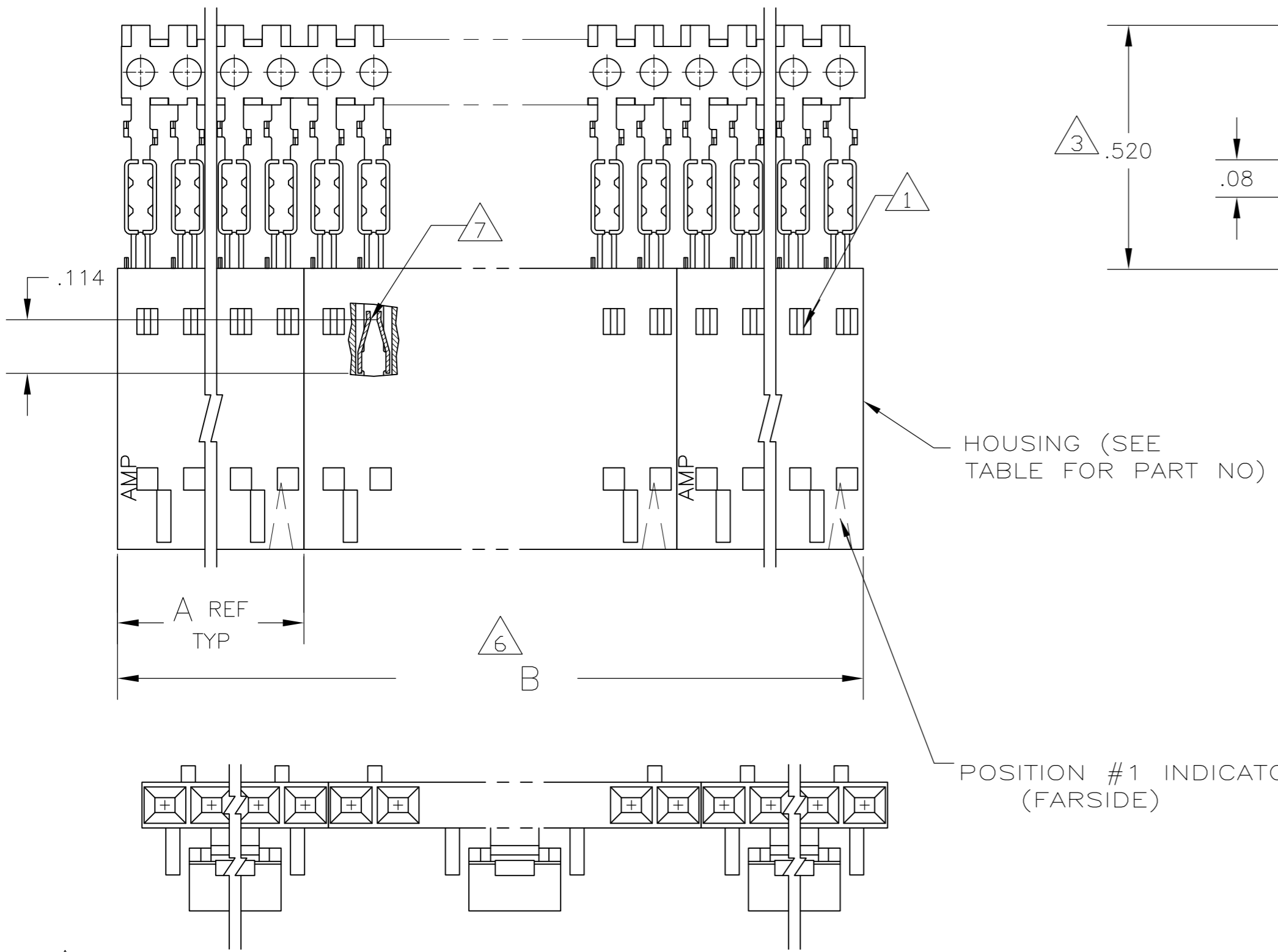


LOC	DIST	REVISIONS			
P	LTR	DESCRIPTION	DATE	DWN	APVD
AD	00				
	M	EC 0G3C 0734 04	18DEC04	BSV	JLG
	M1	REVISED PER ECO-09-020689	02SEP09	KK	AEG



- 1 CONTACTS ARE LATCHED INTO THE PRELOAD WINDOWS
- 2 USE WITH #26-#30 AWG WIRE SIZE, .054/.030 INSULATION DIAMETER, .015 MAXIMUM INSULATION THICKNESS
- 3 THE DIMENSION APPLIES WITH THE FORWARD PRELOAD STOP IN CONTACT WITH THE HOUSING SURFACE
- 4 POINT OF MEASUREMENT FOR PLATING THICKNESS
- 5 FOR INDIVIDUAL ASSEMBLIES SEE PART NUMBER 103641
- 6 ASSEMBLIES ARE JOINED BY THE CARRIER STRIP. ORDER QUANTITY REFLECTS TOTAL NUMBER OF INDIVIDUAL ASSEMBLIES REQUIRED. SEE TABLE FOR NUMBER OF ASSEMBLIES PER STRIP.
- 7 POINT OF MEASUREMENT FOR PLATING THICKNESS (INSIDE BEAMS)
- 8 MAXIMUM ALLOWABLE BOW OF ASSEMBLY NOT TO EXCEED .055.
- 9 .000100-.000200 BRIGHT TIN-LEAD OVER .000050 NICKEL.
- 10 .000100-.000200 BRIGHT TIN OVER .000050 NICKEL.
- 11 PRELIMINARY PART - NOT RELEASED FOR PRODUCTION.
- 12 .000100-.000200 MATTE TIN OVER .000050 NICKEL.
- 13 OBSOLETE PARTS: OBSOLETE CIS STREAMLINING PER D.RENAUD/D.SINISI

13	OBSOLETE	12	2	2.40	1.198	1-104257-1	12	6-103959-1
13	OBSOLETE	12	2	2.20	1.098	1-104257-0	11	6-103959-0
		12	2	2.00	.998	104257-9	10	5-103959-9
		12	2	1.80	.898	104257-8	9	5-103959-8
		12	2	1.60	.798	104257-7	8	5-103959-7
13	OBSOLETE	12	2	1.40	.698	104257-6	7	5-103959-6
		12	4	2.39	.598	104257-5	6	5-103959-5
		12	4	1.99	.498	104257-4	5	5-103959-4
		12	5	1.99	.398	104257-3	4	5-103959-3
		12	8	2.40	.298	104257-2	3	5-103959-2
		12	10	2.00	.198	104257-1	2	5-103959-1
		10	5	1.99	.398	104257-3	4	1-103959-3
		11	4	1.99	.498	104257-4	5	1-103959-2
13	OBSOLETE	9	2	2.40	1.198	1-104257-1	12	1-103959-1
13	OBSOLETE	9	2	2.20	1.098	1-104257-0	11	1-103959-0
		9	2	2.00	.998	104257-9	10	103959-9
13	SUPERSEDED	9	2	1.80	.898	104257-8	9	103959-8
		9	2	1.60	.798	104257-7	8	103959-7
13	OBSOLETE	9	2	1.40	.698	104257-6	7	103959-6
		9	4	2.39	.598	104257-5	6	103959-5
		9	4	1.99	.498	104257-4	5	103959-4
		9	5	1.99	.398	104257-3	4	103959-3
		9	8	2.40	.298	104257-2	3	103959-2
		9	10	2.00	.198	104257-1	2	103959-1
PLATING		6	B	A		HOUSING PART NUMBER	NO OF POSN	ASSEMBLY PART NUMBER ON STRIP

THIS DRAWING IS A CONTROLLED DOCUMENT.

DWN L A MAYER 11-4-86  
 CHK P de Jong 11-12-86  
 APVD P de Jong 11-12-86

TOLERANCES UNLESS OTHERWISE SPECIFIED:  
 0 PLC ± -  
 1 PLC ± -  
 2 PLC ± .02  
 3 PLC ± .005  
 4 PLC ± -  
 ANGLES ± -  
 FINISH SEE TABLE

108-25034  
 114-25026

WEIGHT -

CUSTOMER DRAWING

Tyco Electronics Corporation  
 Harrisburg, Pa 17105-3608

RCPT ASSY, AMPMODU MTE, SINGLE  
 ROW .100 C/L, LATCHED AND POLARIZED  
 FOR #26-#30 AWG WIRE SIZE, STRIP FORM

SIZE A2 CAGE CODE 00779 DRAWING NO C-103959 RESTRICTED TO -

SCALE 4:1 SHEET 1 OF 1 REV M1