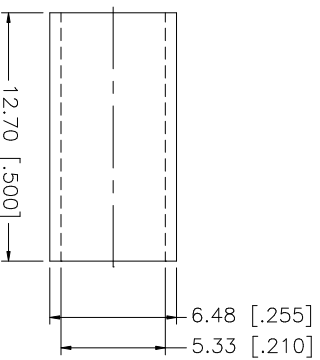
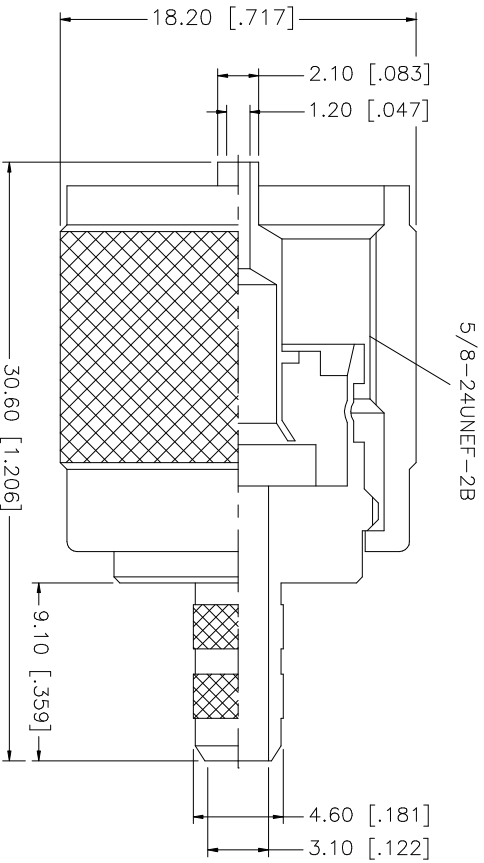
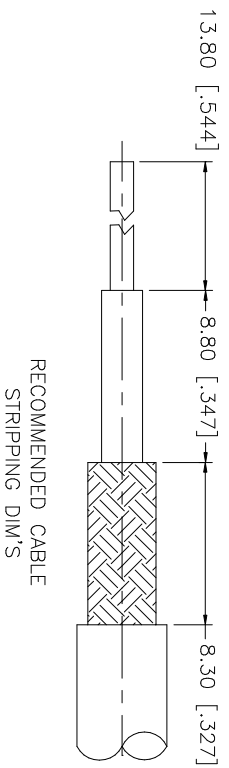


REV.	DATE	DESCRIPTION
A	11/04/03	MODIFY CONTACT OPENING/ PART DESCRIPTION
B	01/15/04	MODIFY PART DESCRIPTION / ADD CRIMP NOTES



NOTE:

1. CRIMPED FERRULE
HEX. CRIMP SIZE .213"
2. CRIMPED CONTACT PIN
HEX. CRIMP SIZE .068"

DESCRIPTION	MATERIAL	FINISH	QTY	UNLESS OTHERWISE SPECIFIED DIMENSIONS ARE IN MILLIMETERS. DIMENSIONS IN [] ARE IN INCHES AND FOR CUSTOMER REFERENCE ONLY. TOLERANCES FOR MILLIMETERS ARE:	APPROVALS	DATE	PART DESCRIPTION	
1	SHELL/BODY	NICKEL	1	0.20 - .315 = ± 0.007"	DRAWN	01/15/04	<p>Amphenol Connex</p> <p>UHF CRIMP PLUG (FOR RG-58, 141, LMR200 CABLE)</p> <p>PART NO. 182100</p>	
2	INSULATOR	NATURAL	1	.315 - 1.180 = ± 0.015"	G.R.S.			
3	CONTACT PIN	GOLD	1	1.180 - 4.724 = ± 0.020"	CHECKED			
4	FERRULE	NICKEL	1	0.5 - 8mm ± 0.20mm	ISSUED			
5				8 - 30mm ± 0.40mm	SHEET	1 OF 1		
6				30 - 120mm ± 0.30mm	CAD FILE			
7					C:/182/182100.DWG			
8								
DESCRIPTION				DO NOT SCALE DRAWING	DWG. NO.	REV.	SIZE	SCALE
					182100.DWG	B	A	NA