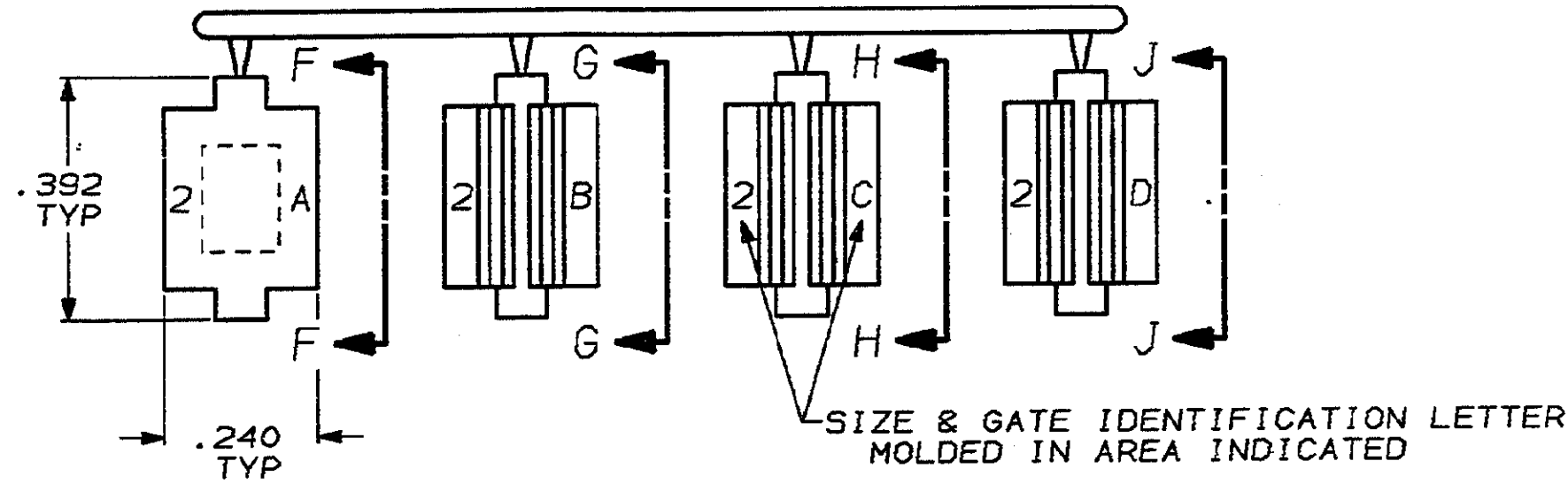


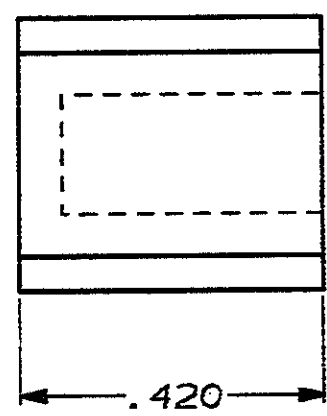
DRAWING MADE IN THIRD ANGLE PROJECTION

THIS DRAWING IS UNPUBLISHED. RELEASED FOR PUBLICATION, 19
 © COPYRIGHT 19 BY AMP INCORPORATED, HARRISBURG, PA. ALL INTERNATIONAL RIGHTS RESERVED. AMP PRODUCTS MAY BE COVERED BY U.S. AND FOREIGN PATENTS AND/OR PATENTS PENDING.

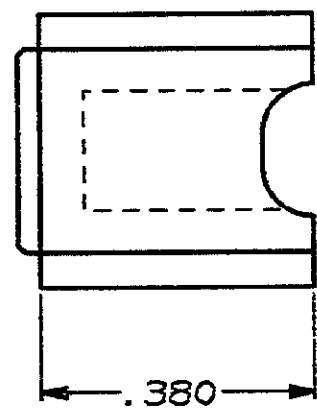
LOC		DIST		REVISIONS				DATE	APPROVED
BD	39	P	F	ZONE	LTR	DESCRIPTION			
				A		REVISED & REDRAWN	ECN-1465	8-12-86	-



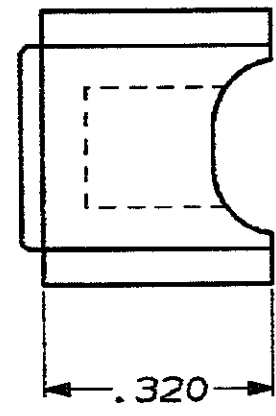
1. GATES ARE SHIPPED ATTACHED TO RUNNER.



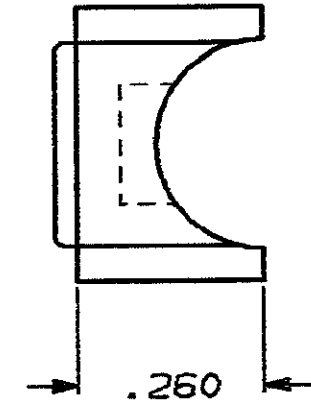
VIEW F-F



VIEW G-G



VIEW H-H



VIEW J-J

AS SHOWN	207472-1
REMARKS	PART NUMBER

UNLESS OTHERWISE SPECIFIED DIMENSIONS ARE IN INCHES TOLERANCES ON: 2 PL DEC ± 3 PL DEC ± .005 ANGLES ±	DR <i>S. Weldon 9/16/86</i>	AMP AMP INCORPORATED Harrisburg, Pa. 17105		
	CHK <i>C. Richard 9/16/86</i>			NAME
MATERIAL POLYPROPYLENE COLOR: BLACK	APPR <i>J. Schufely 9/16/86</i>	CABLE GATES, FOR SIZE 2, 90° & 180° EXIT, AMPLIMITE®		
	APPD <i>U. Kumar 9/16/86</i>			PRODUCT SPEC
FINISH	APPLICATION SPEC	SIZE C	FSCM NO 00779	DRAWING NO 207472
WEIGHT		SCALE NTS	SHEET 1 OF 1	

2-D	.320
2-C	.220
2-B	.170
2-A	
GATE	CABLE DIA REF

AMP 1471-7 REV 10-84

CUSTOMER DRAWING

207472