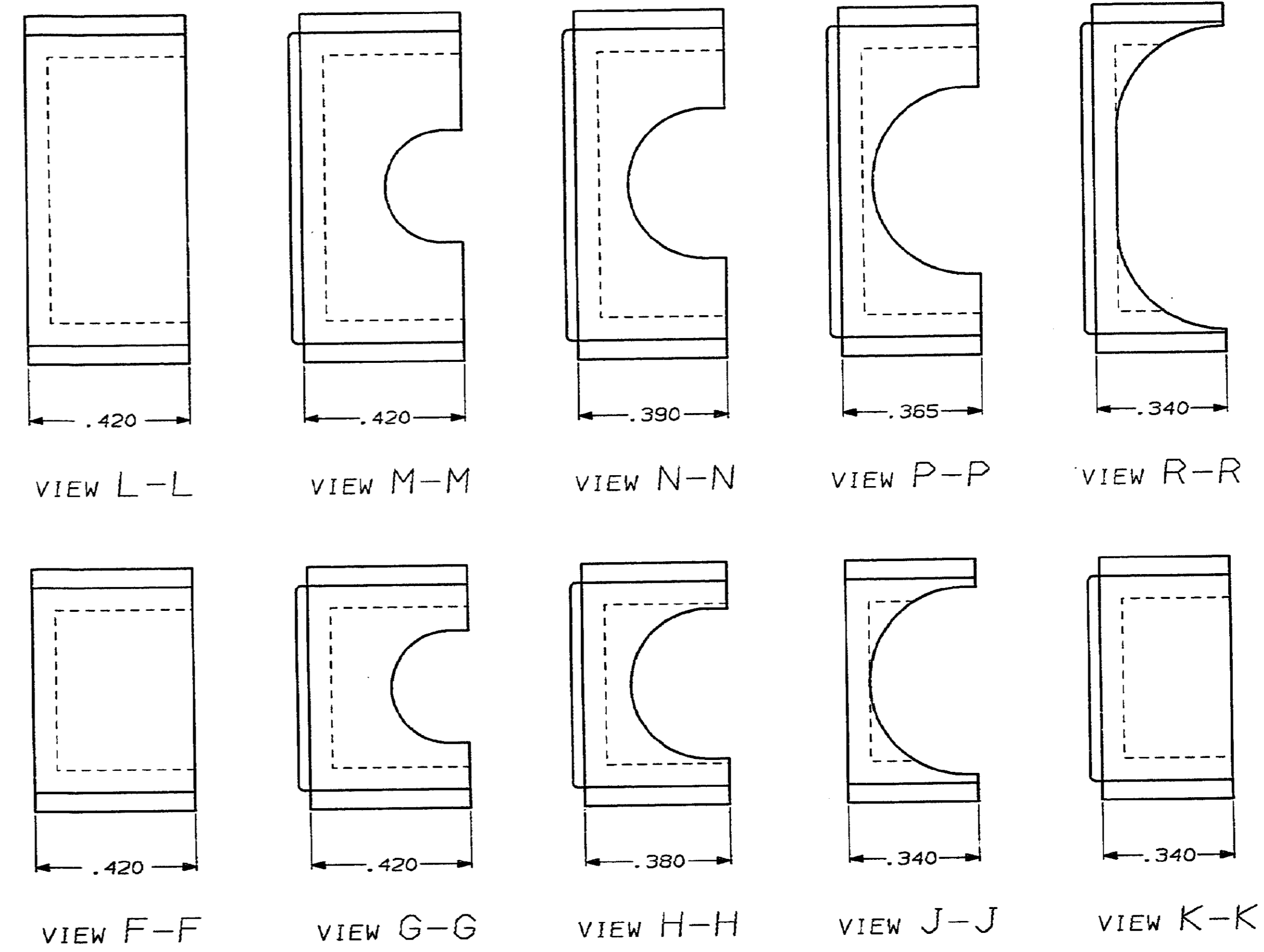
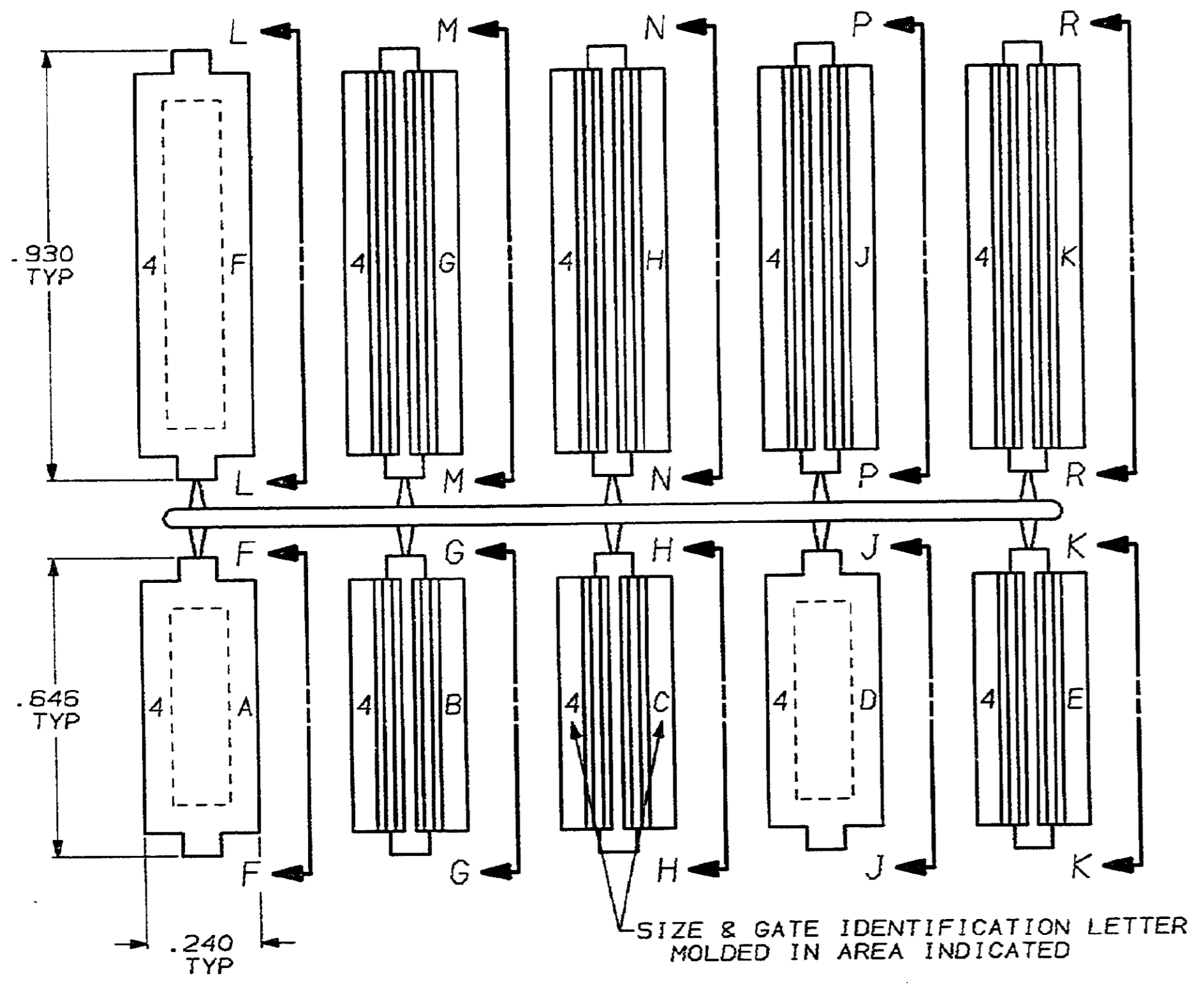


DRAWING MADE IN THIRD ANGLE PROJECTION
 THIS DRAWING IS UNPUBLISHED. RELEASED FOR PUBLICATION .19
 © COPYRIGHT 19 BY AMP INCORPORATED, HARRISBURG, PA. ALL INTERNATIONAL RIGHTS RESERVED. AMP PRODUCTS MAY BE COVERED BY U.S. AND FOREIGN PATENTS AND/OR PATENTS PENDING.

REVISIONS				
LOC	DIST	ZONE	LTR	DESCRIPTION
BD	39	P	F	REVISED & REDRAWN ECN-1465
			A	16-16-86
				APPD



180° EXIT GATES

90° EXIT GATES

1. GATES ARE SHIPPED ATTACHED TO RUNNER.

4-K	.640
4-J	.400
4-H	.320
4-G	.270
4-F	
4-E	
4-D	.405
4-C	.390
4-B	.265
4-A	.250
GATE	CABLE DIA REF

UNLESS OTHERWISE SPECIFIED DIMENSIONS ARE IN INCHES TOLERANCES ON:		DR: <i>Debra Hilde</i>		AMP INCORPORATED Harrisburg, Pa. 17105	
2 PL DEC ± .005		CHK: <i>E. F. Hill 9/16/86</i>		NAME: CABLE GATES, FOR SIZE 4, 90° & 180° EXIT, AMPLIMITE®	
3 PL DEC ± .005		APPD: <i>R. Lakshmi 9/16/86</i>		FSCM NO: 00779	
ANGLES ± .005		APPD: <i>V. Kumar 9/16/86</i>		DRAWING NO: 207475	
MATERIAL: POLYPROPYLENE COLOR: BLACK	PRODUCT SPEC: -	FINISH: -	APPLICATION SPEC: -	SCALE: NTS	SHEET 1 OF 1
WEIGHT: -	REMARKS: AS SHOWN		PART NUMBER: 207475-1		