

THIS DRAWING IS UNPUBLISHED. RELEASED FOR PUBLICATION, 19 .
 © COPYRIGHT 19 BY AMP INCORPORATED. ALL INTERNATIONAL RIGHTS RESERVED.

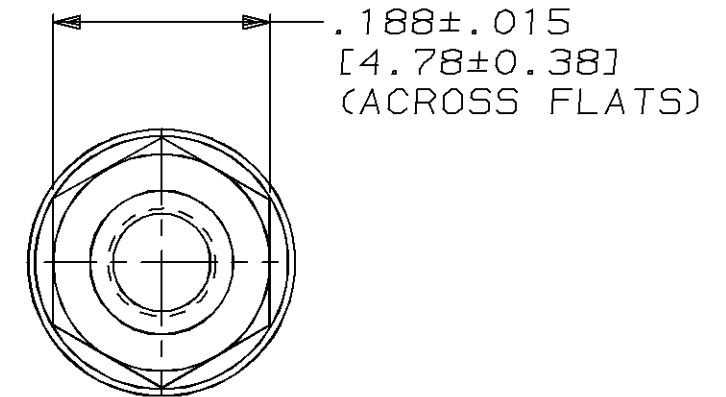
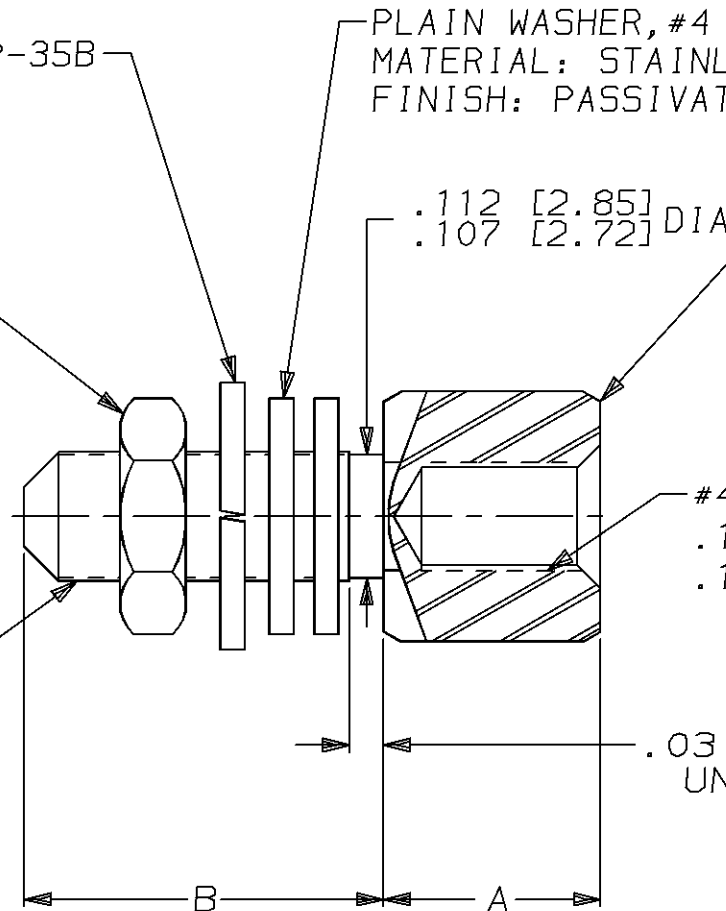
PROD CODE	LOC	DIST	P	F	ZONE	LTR	DESCRIPTION	DATE	APPD	
5066	DF	DO				C	REV & REDRWN PER DF-6413	JL	1-6-93	FK
						D	REV PER DF-7357	AJG	3-22-93	RG
						E	REV PER 0600-1736-94	TT	05-10-94	FK
						F	REV PER 0600-1831-94	TT	05-10-94	FK

LOCKWASHER
 MATERIAL: STAINLESS STEEL
 PER QQ-S-766
 FINISH: PASSIVATED PER QQ-P-35B

PLAIN WASHER, #4 (QTY 2)
 MATERIAL: STAINLESS STEEL PER QQ-S-766
 FINISH: PASSIVATED PER QQ-P-35B

HEX NUT
 MATERIAL: STAINLESS STEEL
 PER ASTM-A-582
 FINISH: PASSIVATED PER QQ-P-35B

SCREWLOCK, FEMALE
 MATERIAL: STAINLESS STEEL
 PER ASTM-A-582
 FINISH: PASSIVATED PER QQ-P-35B



1. PACKAGED UNASSEMBLED.
2. EACH KIT HAS TWO COMPLETE ASSEMBLIES AS SHOWN ABOVE.
3. WHEN A CLINCH TAB TYPE CONNECTOR IS FRONT MOUNTED, ONE FLAT WASHER SHALL BE USED AS A SPACER BETWEEN THE MOUNTING SURFACE AND THE CONNECTOR.

THIS DRAWING IS A CONTROLLED DOCUMENT FOR AMP INCORPORATED. IT IS SUBJECT TO CHANGE AND THE CONTROLLING ENGINEERING ORGANIZATION SHOULD BE CONTACTED FOR THE LATEST REVISION.

.560 [14.22]	.223 [5.66]	-	212447-2
.312 [7.92]	.188 [4.78]	M24308/26-1P	212447-1
B ±.015 [0.38]	A ±.015 [0.38]	MILITARY PART NO	PART NO
DO NOT SCALE PRINT. UNLESS SPECIFIED DIMENSIONS IN INCHES [mm] TOLERANCES ON: 2 PLC DEC ± - 3 PLC DEC ± - ANGLES ± -	DR 1-6-93 J.LINDERMANN CHK 1-8-93 F.KINSEY APPD 1-8-93 F.KINSEY APPD 1-8-93 F.KINSEY PRODUCT SPEC -	AMP AMP Incorporated Harrisburg, PA 17105-3608	
MATERIAL SEE CALLOUTS	APPLICATION SPEC -	NAME KIT, SCREWLOCK ASSEMBLY, FEMALE STAINLESS STEEL, AMPLIMITE	
FINISH SEE CALLOUTS	WEIGHT -	SIZE B	CAGE CODE 00779
		DRAWING NO C-212447	SHEET 1 OF 1
		SCALE 6:1	