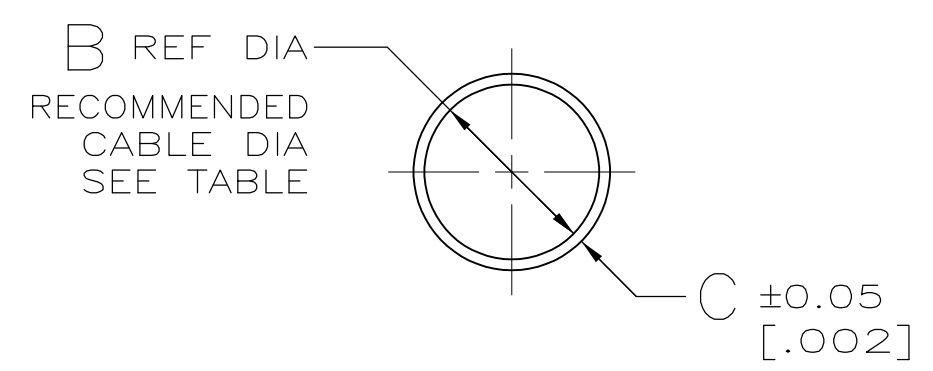
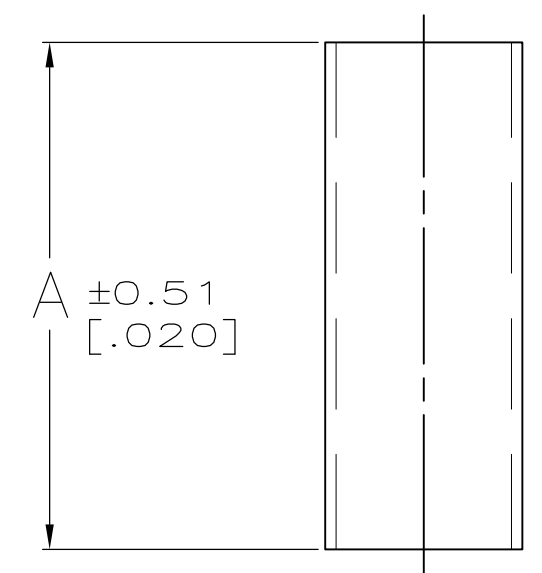


THIS DRAWING IS UNPUBLISHED. RELEASED FOR PUBLICATION
 © COPYRIGHT BY TYCO ELECTRONICS CORPORATION. ALL RIGHTS RESERVED.

LOC	DIST	REVISIONS			
P	LTR	DESCRIPTION	DATE	OWN	APVD
GP	00	F3	REVISED PER ECO-07-006181	15JUN07	JDP/CWR
		F4	REVISED PER ECO-09-021510	15SEP09	KK/AEG

- 1 .000100 MIN TIN PER MIL-T-10727 OR TIN-LEAD.
- 2 .000100 MIN TIN PER MIL-T-10727.
- 3 COPPER PER QQ-C-576
- 4 SUPERSEDED
- 5 OBSOLETE PARTS: OBSOLETE CIS STREAMLINING PER D.RENAUD/D.SINISI



FINISH	USED WITH	RECOMMENDED CABLE DIA	C	B	A	PART NUMBER
2	-	4.83-6.10 [.190-.240]	0.38 [.015]	6.15 [.242]	10.16 [.400]	5-745130-5
	7-745129-8 7-745129-9	5.84-7.11 [.230-.280]	0.38 [.015]	7.16 [.282]	17.78 [.700]	4-745130-5
	-	17.78-19.05 [.700-.750]	0.51 [.020]	19.30 [.760]	17.78 [.700]	4-745130-4
	-	14.99-16.51 [.590-.650]	0.51 [.020]	16.76 [.660]	17.78 [.700]	4-745130-3
	7-745129-4 7-745129-6	11.81-13.46 [.465-.530]	0.51 [.020]	13.59 [.535]	17.78 [.700]	4-745130-2
	7-745129-1 7-745129-5	9.65-10.92 [.380-.430]	0.38 [.015]	11.10 [.437]	17.78 [.700]	4-745130-1
	6-745129-9	8.00-9.27 [.315-.365]	0.38 [.015]	9.52 [.375]	17.78 [.700]	4-745130-0
	7-745129-2	7.62-8.89 [.300-.350]	0.38 [.015]	8.99 [.354]	17.78 [.700]	3-745130-9
	7-745129-0 7-745129-3	4.83-6.10 [.190-.240]	0.38 [.015]	6.15 [.242]	17.78 [.700]	3-745130-8
	1	-	4.83-6.10 [.190-.240]	0.38 [.015]	6.15 [.242]	10.16 [.400]
3-745129-2 3-745129-4		5.84-7.11 [.230-.280]	0.38 [.015]	7.16 [.282]	17.78 [.700]	1-745130-6
-		17.78-19.05 [.700-.750]	0.51 [.020]	19.30 [.760]	17.78 [.700]	1-745130-4
-		14.99-16.51 [.590-.650]	0.51 [.020]	16.76 [.660]	17.78 [.700]	1-745130-3
2-745129-2 2-745129-6		11.81-13.46 [.465-.530]	0.51 [.020]	13.59 [.535]	17.78 [.700]	1-745130-2
1-745129-9 2-745129-3		9.65-10.92 [.380-.430]	0.38 [.015]	11.10 [.437]	17.78 [.700]	1-745130-1
1-745129-7		8.00-9.27 [.315-.365]	0.38 [.015]	9.52 [.375]	17.78 [.700]	1-745130-0
2-745129-0		7.62-8.89 [.300-.350]	0.38 [.015]	8.99 [.354]	17.78 [.700]	745130-9
1-745129-8 2-745129-1		4.83-6.10 [.190-.240]	0.38 [.015]	6.15 [.242]	17.78 [.700]	745130-8

THIS DRAWING IS A CONTROLLED DOCUMENT.

DWN B. MCMASTER 21MAY04
 CHK C. ROHDE 21MAY04
 APVD M. WALMSLEY 21MAY04

Tyco Electronics Corporation
 Harrisburg, Pa 17105-3608

FERRULE, OUTER,
 AMPLIMITE HDP-20

SIZE A2 CAGE CODE 00779 DRAWING NO G-745130 RESTRICTED TO

MATERIAL FINISH SEE TABLE WEIGHT - SCALE 4:1 SHEET 1 OF 1 REV F4

CUSTOMER DRAWING