

TO-3 POWER TRANSISTOR SOCKETS

Designers' Choice

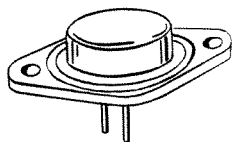


SOCKETS FOR TO-3 CASE

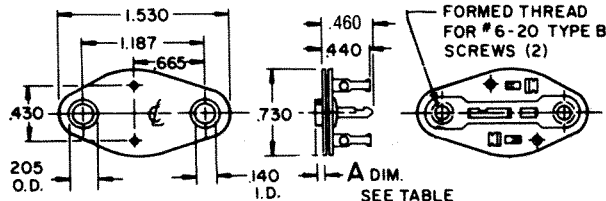
VARIOUS MOLDED BOSS HEIGHTS

The socket is held underneath the chassis and the semiconductor is inserted into the contacts of the socket holding the assembly in position. To complete the mounting, use 6-20 screws to engage the formed holes in the collector plate.

CAT. NO.	A DIM.
4603	.030
4602	.045
4601	.090



MATERIAL:
Top Plate: Molded Nylon
Base: Phenolic

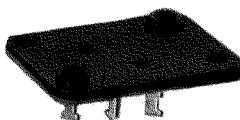
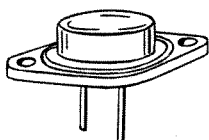


SOCKETS FOR TO-3 CASE

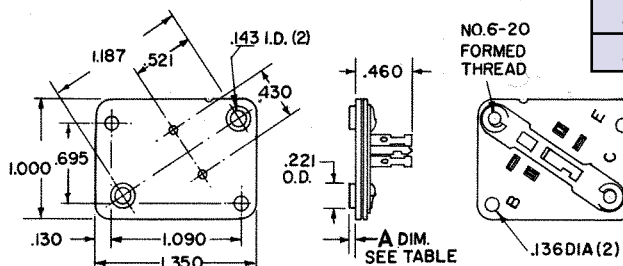
VARIOUS MOLDED BOSS HEIGHTS

Pre-assembling the socket to the chassis by eyelets or rivets permits the installation of the semiconductor at a later stage in the assembly.

CAT. NO.	A DIM.
4607	.030
4608	.045
4609	.060
4618	.125

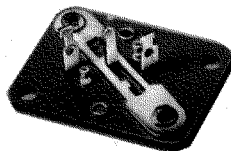
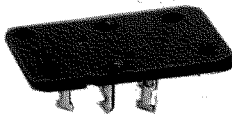
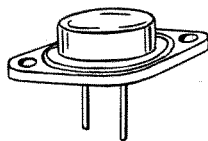


MATERIAL:
Top Plate: Molded Nylon
Base: Phenolic

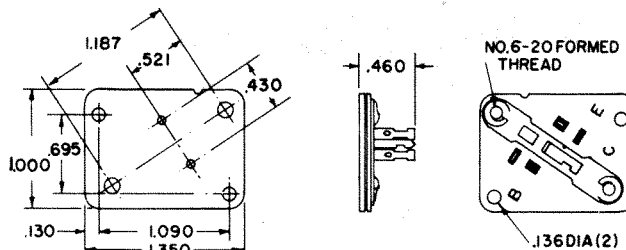


FOR TO-3 CASE (ALL PHENOLIC SOCKET)

This socket is eyeletted or riveted to the chassis and use external bushings to insulate the screws in the final mounting. The semiconductor may be installed at the last stage of the assembly.



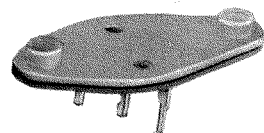
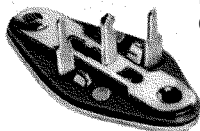
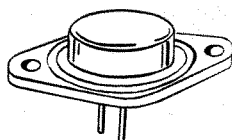
MATERIAL:
Top Plate: Phenolic
Base: Phenolic



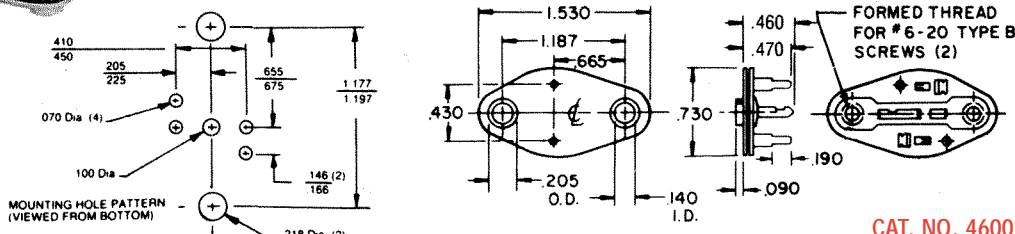
CAT. NO. 4606

SOCKET FOR TO-3 (PRINTED CIRCUIT)

Easily assembles onto printed circuit board. Eliminates wiring. Stops on P.C. terminals provide sufficient spacing between socket and P.C. board to permit proper assembly of transistor to socket. Can be screwed down tightly to heat sink.



MATERIAL:
Top Plate: Molded Nylon
Base: Phenolic



CAT. NO. 4600