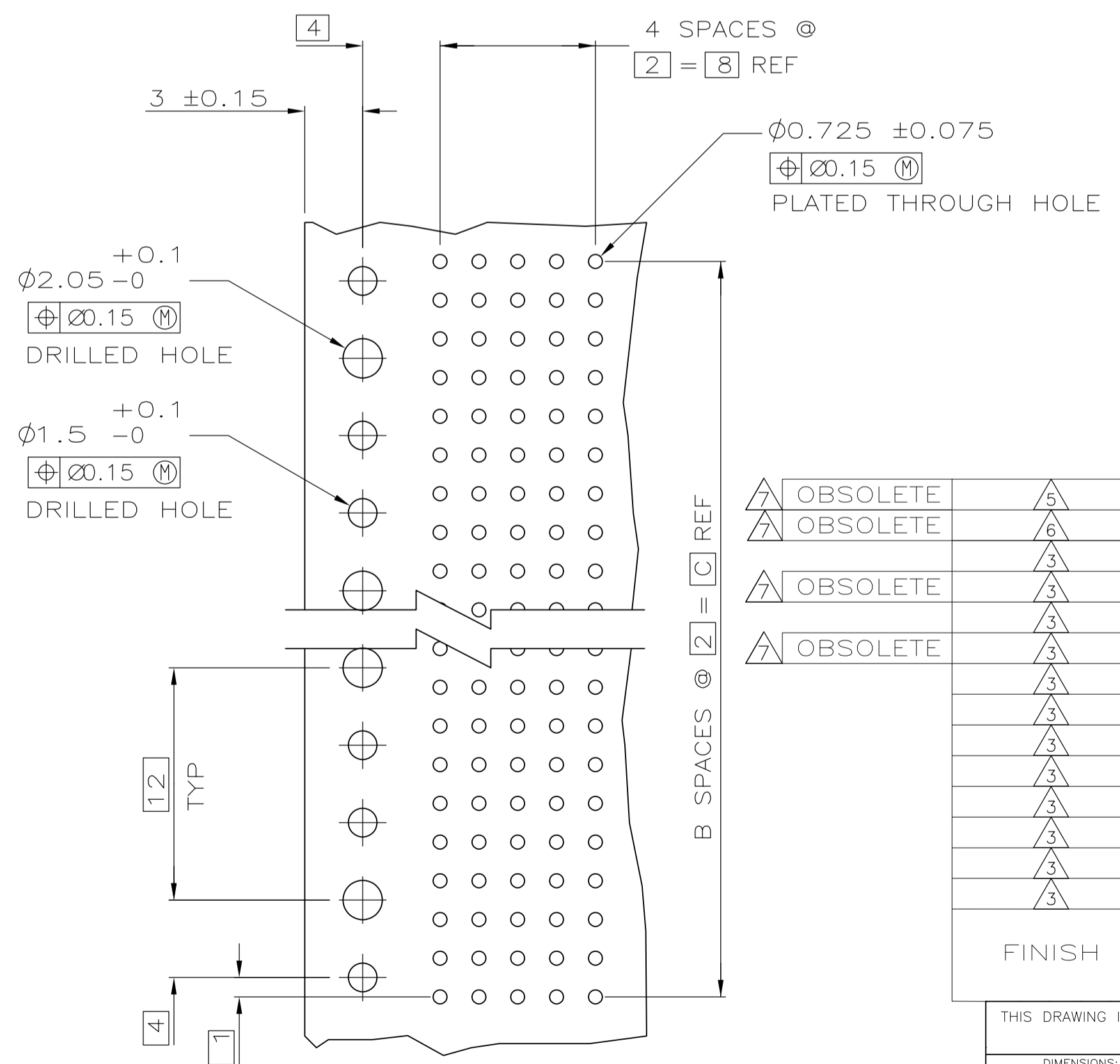
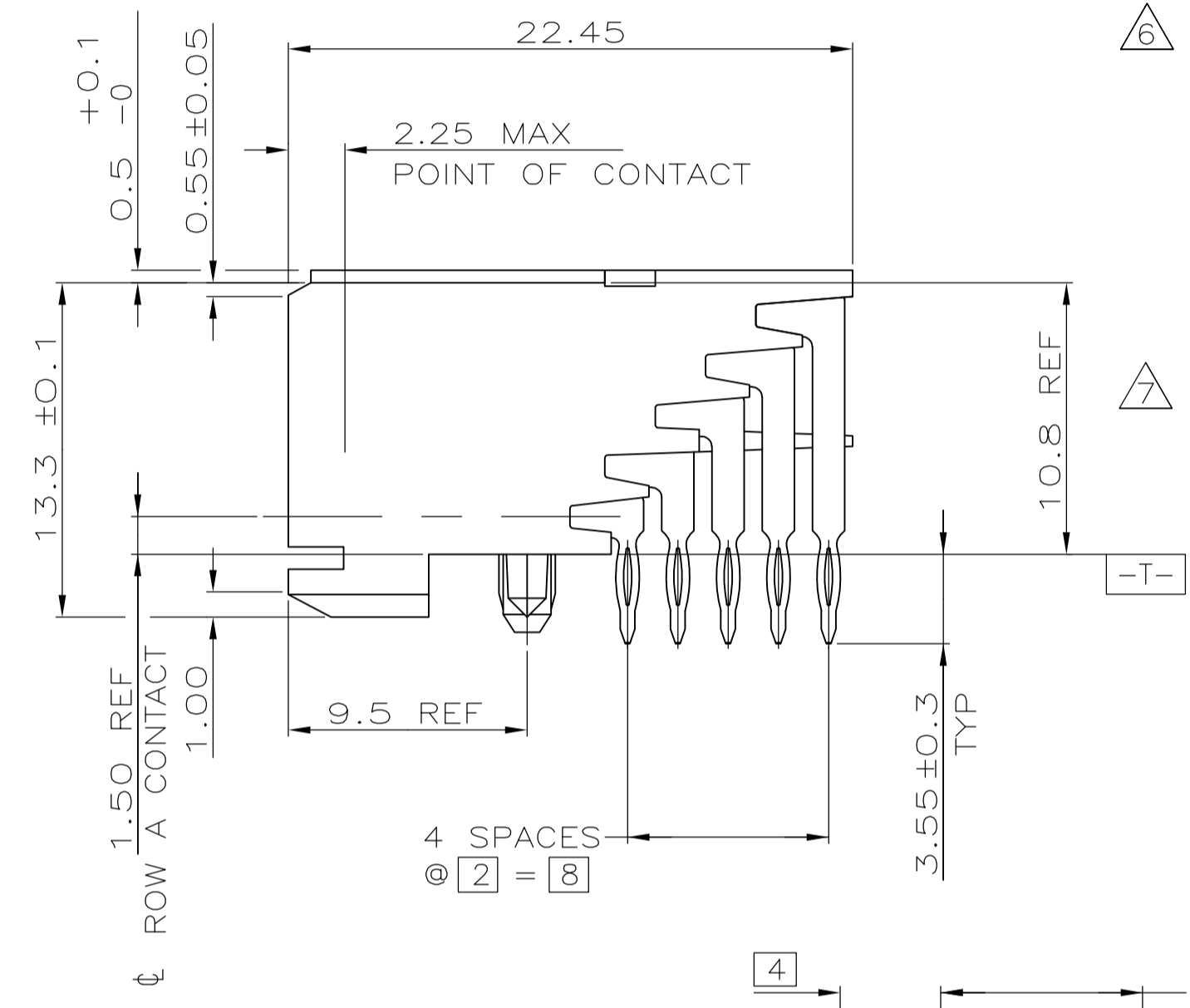
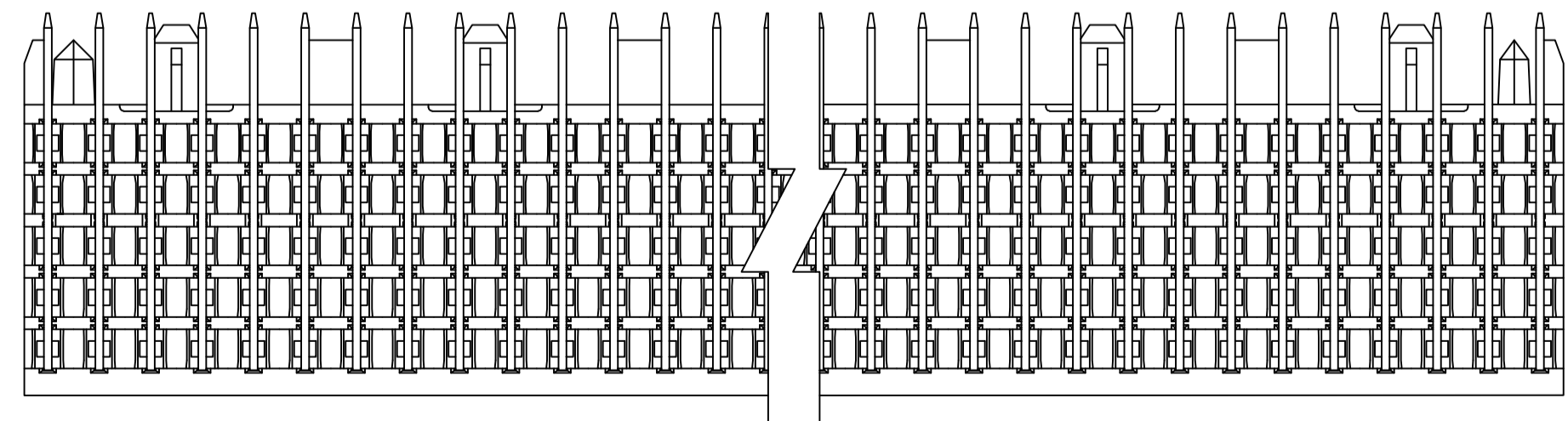
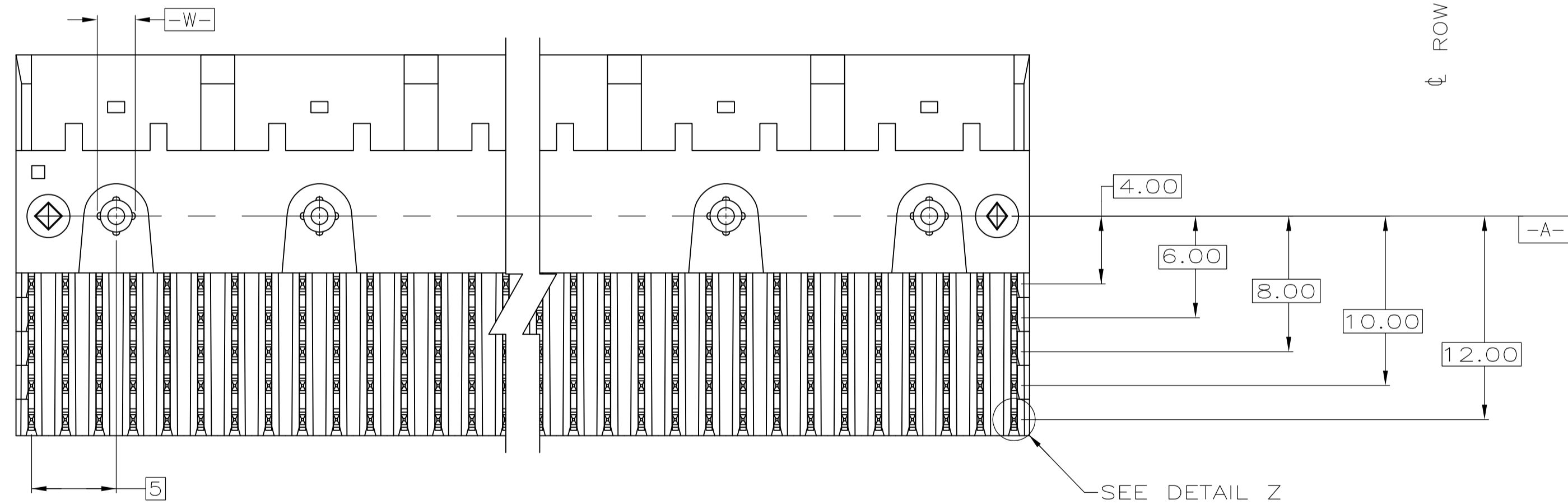
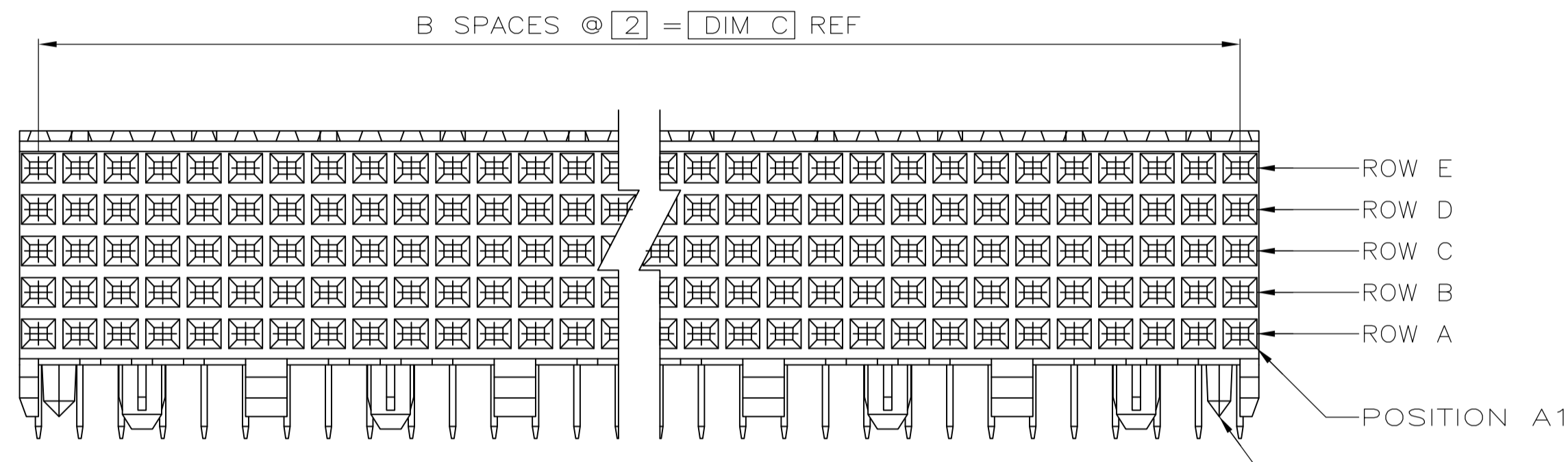
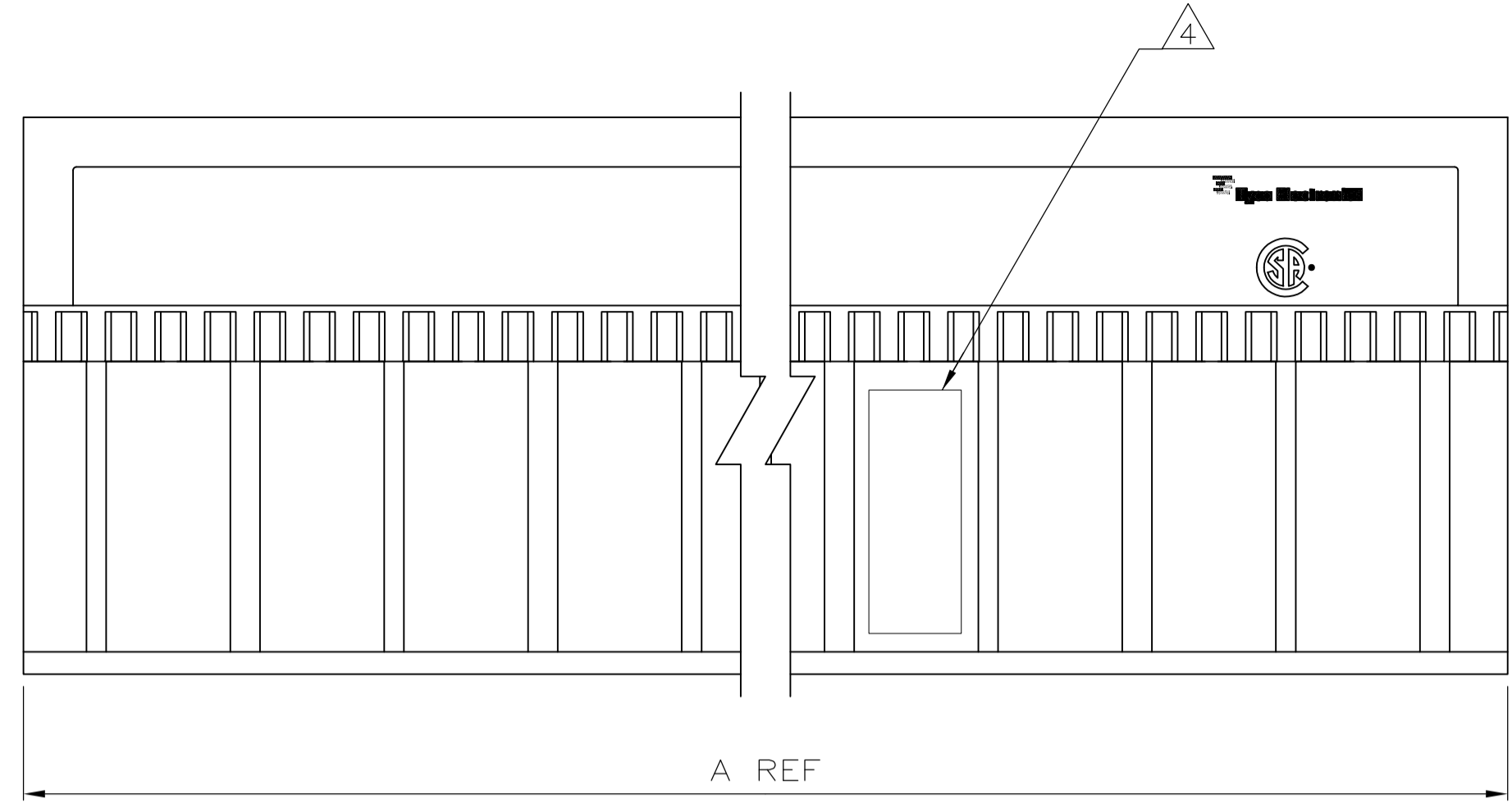
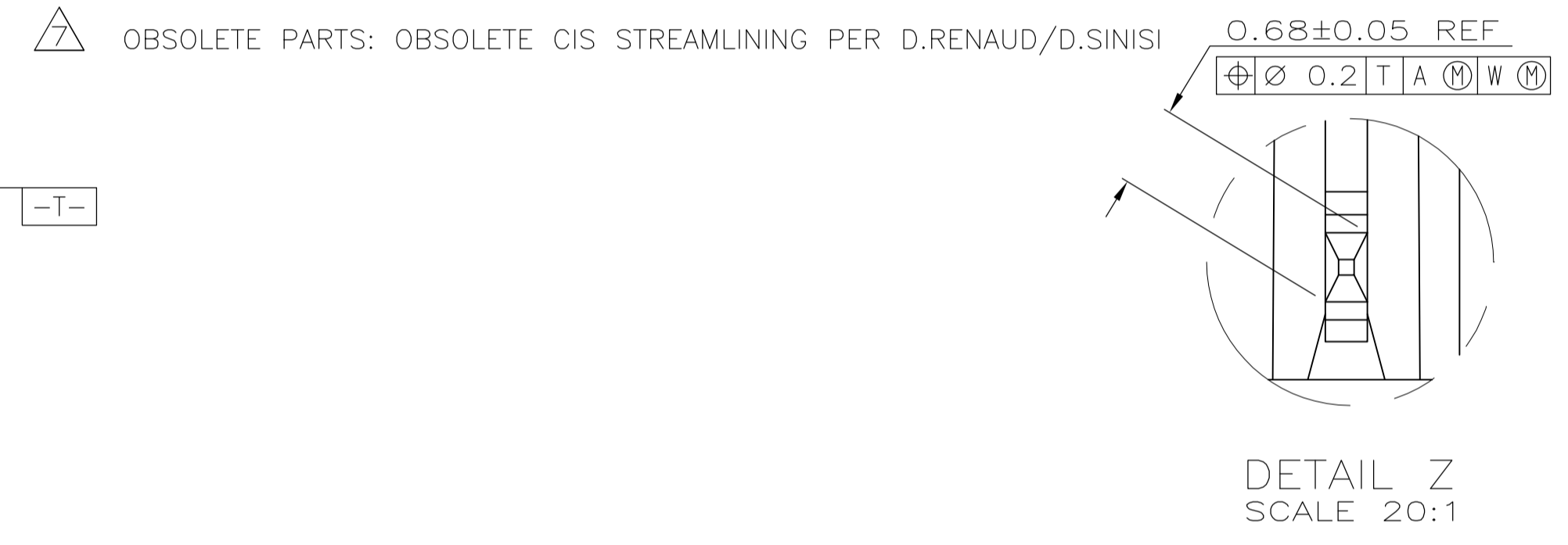


LOC		DIST		REVISIONS				
AD	00	REV	DESCRIPTION	DATE	BY	APPV		
B1		REV PER	ECO-08-009053	16APR08	DH	AS		
B2		REVISED PER	ECO-10-000444	16JAN10	KK	AEG		



- ① HOUSING MATERIAL: LIQUID CRYSTAL POLYMER
COLOR: NATURAL.
- ② CONTACT MATERIAL: PHOSPHOR-BRONZE.
- ③ CONTACT FINISH:
UNDERPLATE (ENTIRE CONTACT):
0.00127 MIN NICKEL PER SAE-AMS-QQ-N-290
ON MATING SURFACES:
CONFORMS TO ALL TESTING SPECIFIED FOR TELCORDIA
UNCONTROLLED ENVIRONMENT.
ON LEADS:
0.0006 MIN MATTE TIN PER ASTM B 545 OVER UNDERPLATE.
LUBRICATION (MIN MATING SURFACES):
SURFACE CONDITIONER AFTER PLATING.
- ④ PART MARKING LOCATED APPROXIMATELY AS SHOWN.
- ⑤ CONTACT FINISH:
UNDERPLATE (ENTIRE CONTACT):
0.00127 MIN NICKEL PER SAE-AMS-QQ-N-290
ON MATING SURFACES:
0.00076 MIN NICKEL OR COBALT HARDENED GOLD
PER ASTM B-488 OVER UNDERPLATE.
ON LEADS:
0.0006 MIN MATTE TIN PER ASTM B 545 OVER UNDERPLATE.
LUBRICATION (MIN MATING SURFACES):
SURFACE CONDITIONER AFTER PLATING.
- ⑥ CONTACT FINISH:
UNDERPLATE (ENTIRE CONTACT):
0.00127 MIN NICKEL PER SAE-AMS-QQ-N-290
ON MATING SURFACES:
0.00127 MIN NICKEL OR COBALT HARDENED GOLD
PER ASTM B-488 OVER UNDERPLATE.
ON LEADS:
0.0006 MIN MATTE TIN PER ASTM B 545 OVER UNDERPLATE.
LUBRICATION (MIN MATING SURFACES):
SURFACE CONDITIONER AFTER PLATING.



REV	DESCRIPTION	DATE	BY	APPV	FINISH	POSITIONING PEGS	C	B	A	NO OF SIGNAL POSN	PART NUMBER
⑤	OBSOLETE		NO	46	23	47.88	120				-3-5223008-4
⑥	OBSOLETE		NO	46	23	47.88	120				-2-5223008-4
③			NO	214	107	215.88	540				1-5223008-2
⑤	OBSOLETE		NO	130	65	131.88	330				-1-5223008-1
③			NO	118	59	119.88	300				1-5223008-0
⑤	OBSOLETE		NO	106	53	107.88	270				-5223008-9
③			NO	94	47	95.88	240				5223008-8
③			NO	82	41	83.88	210				5223008-7
③			NO	70	35	71.88	180				5223008-6
③			NO	58	29	59.88	150				5223008-5
③			NO	46	23	47.88	120				5223008-4
③			NO	34	17	35.88	90				5223008-3
③			NO	22	11	23.88	60				5223008-2
③			YES	10	5	11.88	30				5223008-1

RECOMMENDED CIRCUIT PATTERN
PER IPC-D300 TYPE II, CLASS C
(COMPONENT SIDE)

THIS DRAWING IS A CONTROLLED DOCUMENT.

DIMENSIONS: mm
 TOLERANCES UNLESS OTHERWISE SPECIFIED:
 0 PLC ± -
 1 PLC ± 0.13
 2 PLC ± -
 3 PLC ± -
 4 PLC ± -
 ANGLES ± -

MATERIAL: ① ②
 FINISH: ③ ⑤

CUSTOMER DRAWING: A1 00779 C=5223008
 SCALE: 4:1 SHEET: 1 OF 1 REV: B2

Tyco Electronics Corporation
 Harrisburg, Pa 17105-3608
 NAME: ASSEMBLY, RECEPTACLE, SIGNAL, RIGHT ANGLE, Z-PACK 2mm FB, 5 ROW, PRESS FIT LEAD