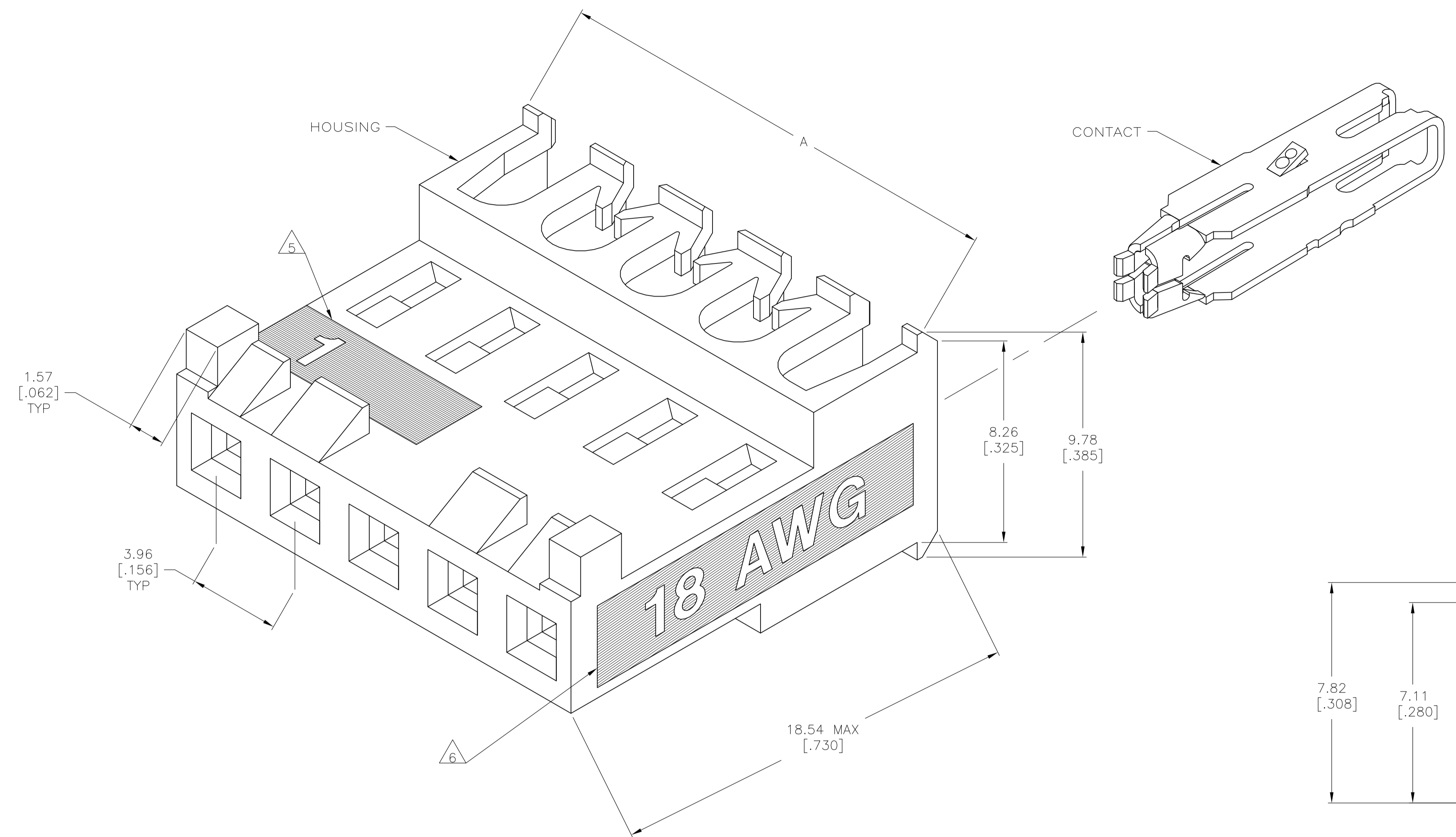
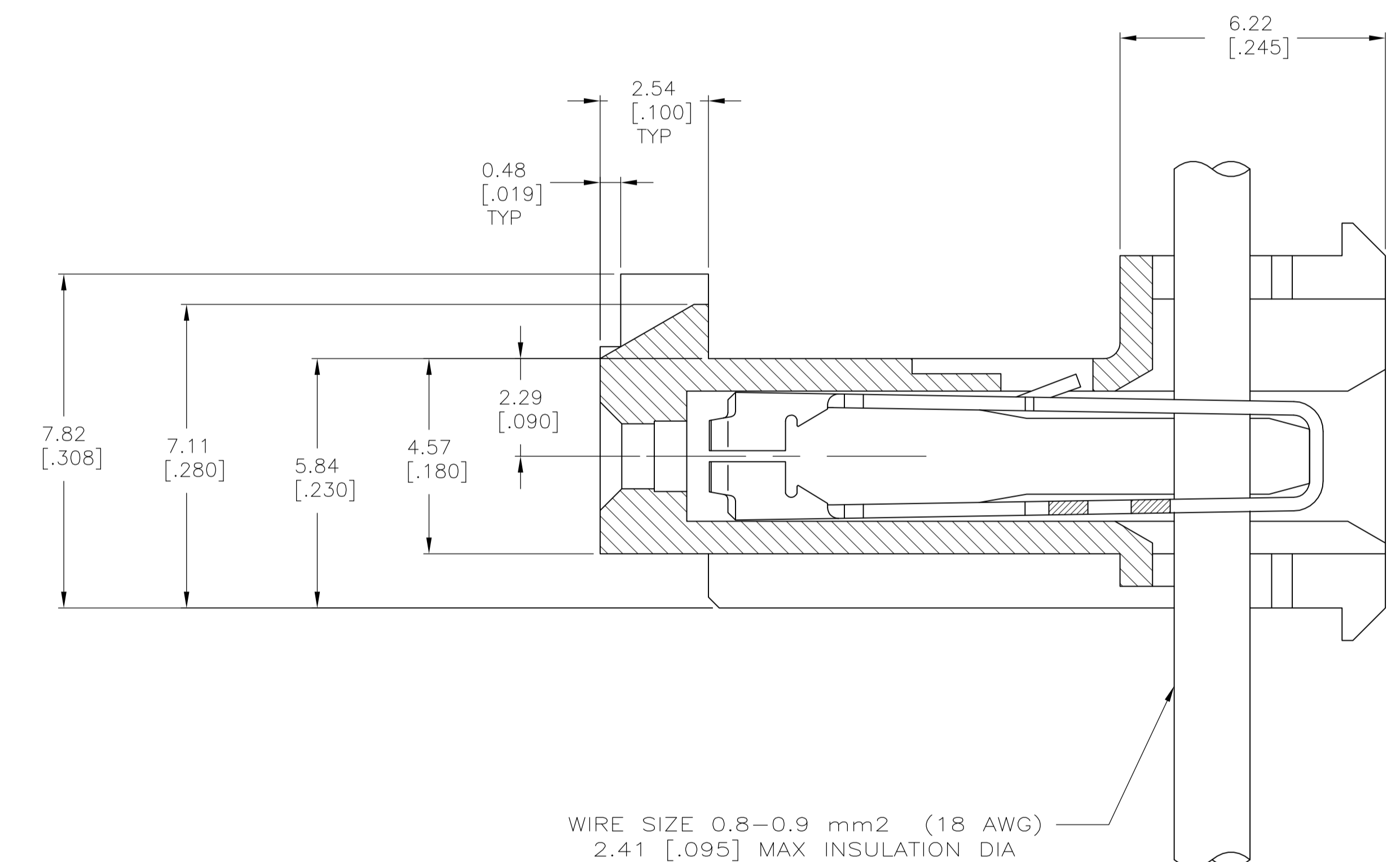


LOC	DIST	REVISIONS				
		REV	DESCRIPTION	DATE	BY	CHKD
CM	00	E	ECO-07-012891	22JUN07	KW	DB
		E1	REVISED PER ECO-09-022908	08OCT09	KK	AEG

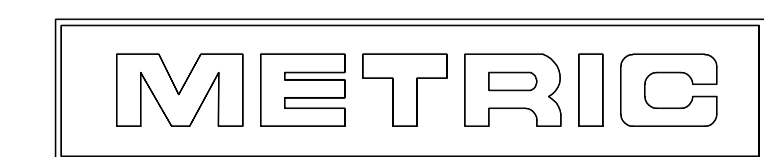


1. OPERATING TEMPERATURE: -55°C TO 105°C.
- 2 MATERIAL: HOUSING, NYLON 6/6, UL 94V-0, BLACK CONTACT, 0.30 [.012] THICK COPPER ALLOY
- 3 FINISH: BRIGHT TIN-LEAD PLATE 0.00203-0.00508 [.000080-.000200] THICK OR MATTE WHISKER MITIGATED TIN 0.00203 [.000080] MIN THICKNESS OVER NICKEL UNDERPLATE.
4. LUBRICATED WITH AMP ANTI-FRETTING LUBRICANT.
- 5 IDENTIFICATION NUMBER FOR FIRST CIRCUIT.
- 6 WIRE GAUGE IDENTIFICATION
7. DIMENSIONS IN BRACKETS ARE IN INCHES.
8. CONTACT MUST ACCEPT 1.14±0.03 [.045±.001] SQUARE POST AND REMAINED LOCKED IN POSITION.
- 9 OBSOLETE PARTS: OBSOLETE CIS STREAMLINING PER D.RENAUD/D.SINISI



TIN	47.55±0.30	[1.872±.012]	12	4-644387-2
TIN	43.59±0.30	[1.716±.012]	11	4-644387-1
TIN	39.62±0.30	[1.560±.012]	10	4-644387-0
TIN	35.66±0.30	[1.404±.012]	9	3-644387-9
TIN	31.70±0.30	[1.248±.012]	8	3-644387-8
TIN	27.74±0.30	[1.092±.012]	7	3-644387-7
TIN	23.77±0.30	[.936±.012]	6	3-644387-6
TIN	19.81±0.30	[.780±.012]	5	3-644387-5
TIN	15.85±0.15	[.624±.006]	4	3-644387-4
TIN	11.89±0.15	[.468±.006]	3	3-644387-3
TIN	7.92±0.15	[.312±.006]	2	3-644387-2
FINISH	A		NO OF CKTS	PART NO

9 SUPERCEDED	TIN-LEAD	47.55±0.30	[1.872±.012]	12	1-644387-2
9 SUPERCEDED	TIN-LEAD	43.59±0.30	[1.716±.012]	11	1-644387-1
	TIN-LEAD	39.62±0.30	[1.560±.012]	10	1-644387-0
	TIN-LEAD	35.66±0.30	[1.404±.012]	9	644387-9
	TIN-LEAD	31.70±0.30	[1.248±.012]	8	644387-8
	TIN-LEAD	27.74±0.30	[1.092±.012]	7	644387-7
	TIN-LEAD	23.77±0.30	[.936±.012]	6	644387-6
9 SUPERCEDED	TIN-LEAD	19.81±0.30	[.780±.012]	5	644387-5
	TIN-LEAD	15.85±0.15	[.624±.006]	4	644387-4
	TIN-LEAD	11.89±0.15	[.468±.006]	3	644387-3
	TIN-LEAD	7.92±0.15	[.312±.006]	2	644387-2
	FINISH	A		NO OF CKTS	PART NO



THIS DRAWING IS A CONTROLLED DOCUMENT.

DIMENSIONS: mm [INCHES]	TOLERANCES UNLESS OTHERWISE SPECIFIED:	DIN C. MARTIN 23APR90	244PR90	Tyco Electronics Corporation Harrisburg, Pa 17105-3608
0 PLC ± -	1 PLC ± -	2 PLC ± -	3 PLC ± 0.13(.005)	4 PLC ± -
ANGLES ± -				
MATERIAL	FINISH	APPROVED: G. MILLER 24APR90	NAME: G. MILLER	PRODUCT SPEC: MTA-156 CONNECTOR ASSEMBLY, QUAD, 18 AWG, FEED THRU, WITH LOCKING RAMP, WITH POLARIZING TAB
		APPLICATION SPEC: 108-1219	SIZE: 114-1048	RESTRICTED TO: A1 00779 C=644387
		WEIGHT: -	CUSTOMER DRAWING	SCALE: 10:1 SHEET: 1 OF 1 REV: E1