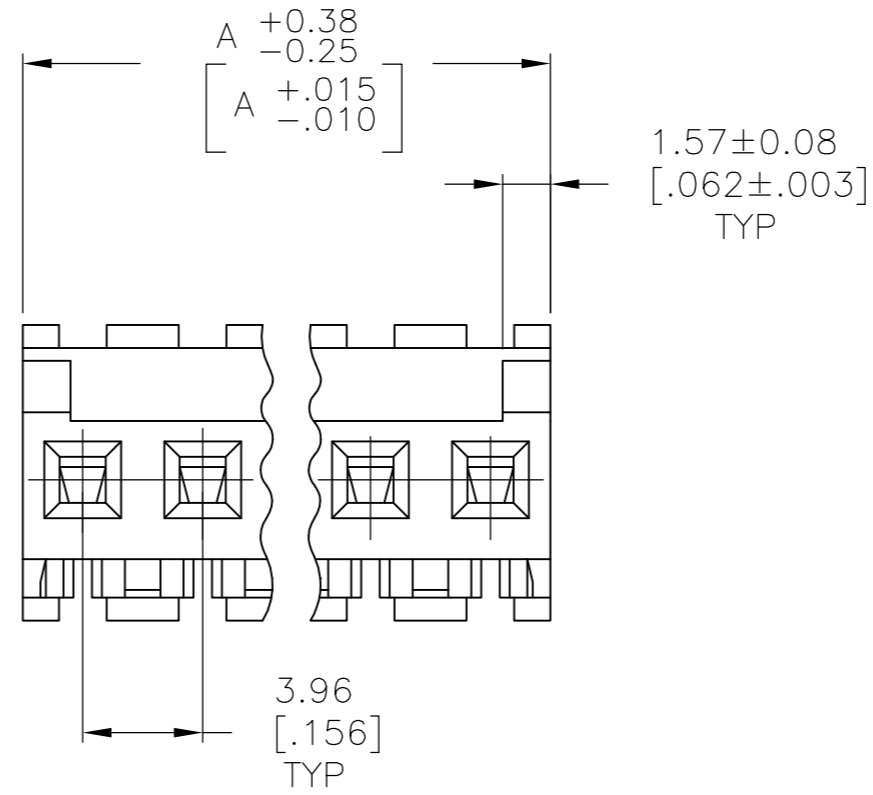
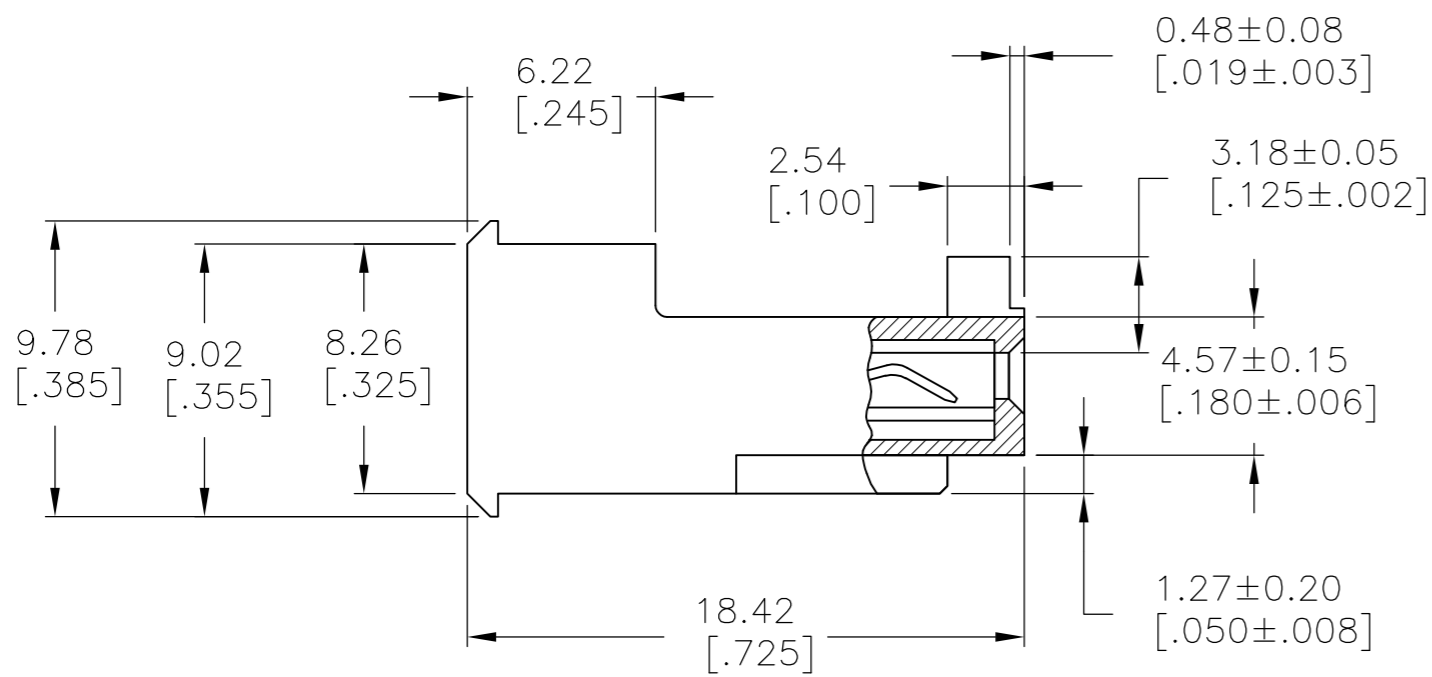
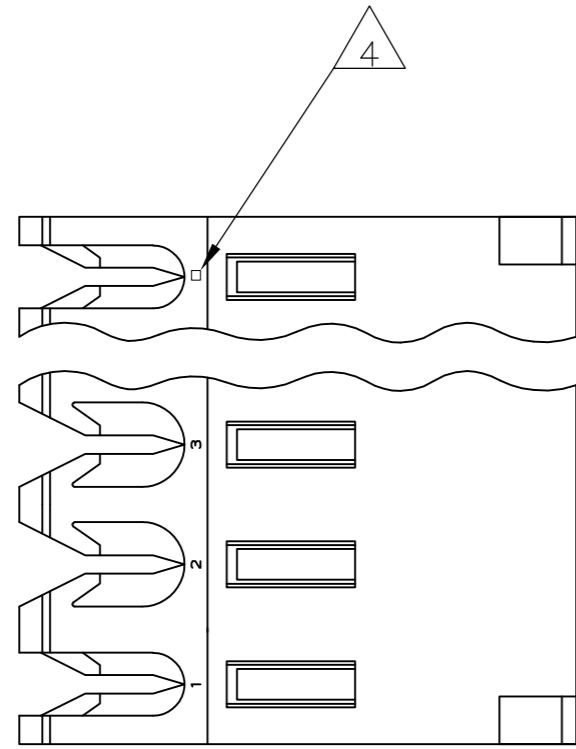


THIS DRAWING IS UNPUBLISHED. RELEASED FOR PUBLICATION  
 © COPYRIGHT BY TYCO ELECTRONICS CORPORATION. ALL RIGHTS RESERVED.

| LOC | DIST | REVISIONS |     |                           |         |     |      |
|-----|------|-----------|-----|---------------------------|---------|-----|------|
| CM  | 54   | P         | LTR | DESCRIPTION               | DATE    | DWN | APVD |
|     |      | C         |     | ECO-07-012855             | 06JUN07 | KW  | DB   |
|     |      | C1        |     | REVISED PER ECO-09-023313 | 09OCT09 | KK  | AEG  |



1 MATERIAL: CONNECTOR - NYLON UL94V-2 (YELLOW).  
 CONTACTS - 0.30[.012] THICK COPPER ALLOY  
 BRIGHT TIN-LEAD 0.00203[.000080] MIN THICK FOR  
 CONTACTS 644470-2 THRU 1-644470-4  
 MATTE WHISKER MITIGATED TIN 0.00203[.000080] MIN  
 THICKNESS OVER NICKEL UNDERPLATE FOR  
 3-644470-2 THRU 4-644470-4

2. CONTACTS ACCEPT 20 AWG WIRE WITH 2.41[.095] MAX  
 INSULATION DIAMETER.  
 3. CONTACTS MUST ACCEPT 1.14±0.03 [.045±.001] SQUARE  
 POST AND REMAIN LOCKED IN POSITION.

4 IDENTIFICATION NUMBER FOR LAST CIRCUIT MAY  
 NOT APPEAR ON ALL ASSEMBLIES.

5. DIMENSIONS IN BRACKETS ARE IN INCHES.

6. HOUSING FEATURES ARE: FEED-THRU WITHOUT  
 LOCKING RAMP AND WITH POLARIZING TAB.

7 OBSOLETE PARTS: OBSOLETE CIS STREAMLINING PER D.RENAUD/D.SINISI

|               |    |                       |
|---------------|----|-----------------------|
| 55.47 [2.184] | 14 | 4-644470-4            |
| 51.51 [2.028] | 13 | 4-644470-3            |
| 47.55 [1.872] | 12 | 4-644470-2            |
| 43.59 [1.716] | 11 | 4-644470-1            |
| 39.62 [1.560] | 10 | 4-644470-0            |
| 35.66 [1.404] | 9  | 3-644470-9            |
| 31.70 [1.248] | 8  | 3-644470-8            |
| 27.74 [1.092] | 7  | 3-644470-7            |
| 23.77 [.936]  | 6  | 3-644470-6            |
| 19.81 [.780]  | 5  | 3-644470-5            |
| 15.85 [.624]  | 4  | 3-644470-4            |
| 11.89 [.468]  | 3  | 3-644470-3            |
| 7.92 [.312]   | 2  | 3-644470-2            |
| 55.47 [2.184] | 14 | <del>1-644470-4</del> |
| 51.51 [2.028] | 13 | <del>1-644470-3</del> |
| 47.55 [1.872] | 12 | <del>1-644470-2</del> |
| 43.59 [1.716] | 11 | <del>1-644470-1</del> |
| 39.62 [1.560] | 10 | <del>1-644470-0</del> |
| 35.66 [1.404] | 9  | <del>644470-9</del>   |
| 31.70 [1.248] | 8  | <del>644470-8</del>   |
| 27.74 [1.092] | 7  | <del>644470-7</del>   |
| 23.77 [.936]  | 6  | <del>644470-6</del>   |
| 19.81 [.780]  | 5  | <del>644470-5</del>   |
| 15.85 [.624]  | 4  | <del>644470-4</del>   |
| 11.89 [.468]  | 3  | <del>644470-3</del>   |
| 7.92 [.312]   | 2  | 644470-2              |
| DIM A         |    | NO OF CIRCUITS        |
|               |    | PART NO               |

7  
 SUPERSEDED

METRIC

|  |  |                                 |   |  |
|--|--|---------------------------------|---|--|
| THIS DRAWING IS A CONTROLLED DOCUMENT. |  | DWN<br>B. LEWIS<br>12 FEB 91    | Tyco Electronics Corporation<br>Harrisburg, Pa 17105-3608 |  |
| DIMENSIONS:<br>mm [INCHES]             |  | CHK<br>R. SWING<br>12 FEB 91    | NAME<br>D.R. CLARK  |  |
| TOLERANCES UNLESS OTHERWISE SPECIFIED: |  | APVD<br>D.R. CLARK<br>20 FEB 91 | PRODUCT SPEC<br>108-1051                                  |  |
| 0 PLC ± -                              |  | APPLICATION SPEC<br>114-1020    |   |  |
| 1 PLC ± -                              |  | WEIGHT -                        |   |  |
| 2 PLC ± -                              |  | SIZE A2                         |   |  |
| 3 PLC ± -                              |  | CAGE CODE 00779                 |   |  |
| 4 PLC ± -                              |  | DRAWING NO C=644470             |   |  |
| ANGLES ± -                             |  | RESTRICTED TO -                 |   |  |
| FINISH 1                               |  | SCALE 4:1 SHEET 1 OF 1 REV C1   |   |  |
| MATERIAL 1                             |  | CUSTOMER DRAWING                |   |  |