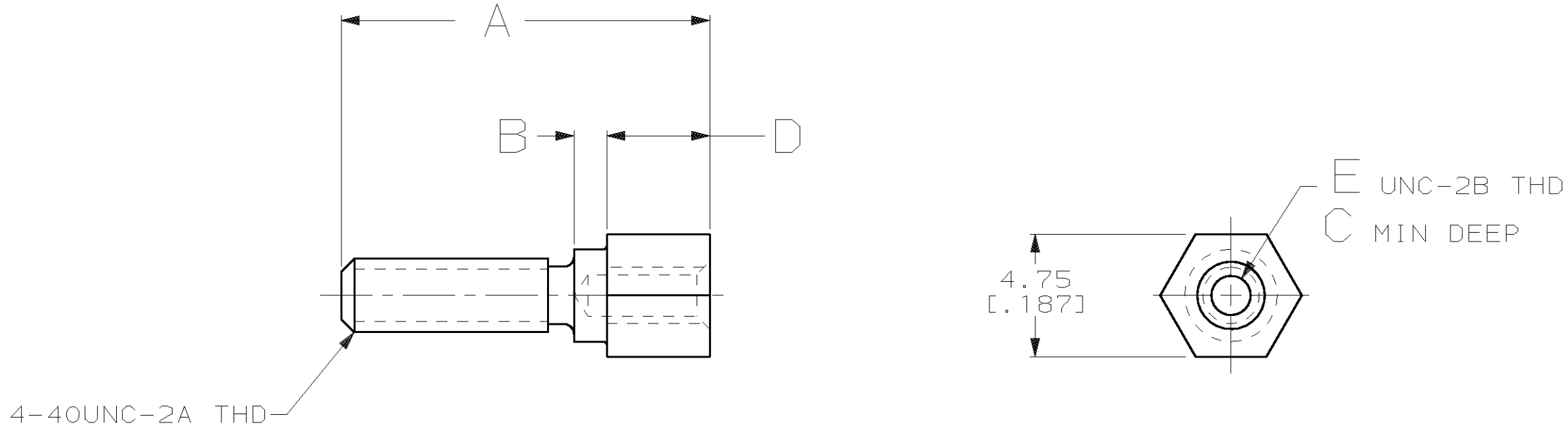



THIS DRAWING IS UNPUBLISHED. RELEASED FOR PUBLICATION, 19 .
 © COPYRIGHT 19 BY AMP INCORPORATED. ALL INTERNATIONAL RIGHTS RESERVED.

LOC	DIST	P	F	ZONE	LTR	DESCRIPTION	DATE	APPD
BD	95				J	REACTIVATED -6 & OBS -5 & -7 PER EC 0G40-458-98	30 NOV 98	RB
					K	REACTIVATED -1 PER EC 0G40-198-99	17 MAY 99	JO



OBSOLETE	4-40	3.99 [.157]	3.30 [.130]	1.27 [.050]	18.29 [.720]	749066-7
	2-56	4.19 [.165]	3.86 [.152]	1.07 [.042]	14.27 [.562]	749066-6
OBSOLETE	2-56	3.71 [.146]	3.58 [.141]	1.27 [.050]	13.92 [.548]	749066-5
OBSOLETE	2-56	3.99 [.157]	3.68 [.145]	1.27 [.050]	33.02 [1.300]	749066-4
	2-56	3.99 [.157]	3.86 [.152]	1.27 [.050]	9.65 [.380]	749066-3
OBSOLETE	2-56	3.99 [.157]	3.86 [.152]	1.27 [.050]	14.27 [.562]	749066-2
	2-56	3.99 [.157]	3.86 [.152]	1.27 [.050]	14.27 [.562]	749066-1
	E	D	C	B	A	PART NO

DO NOT SCALE PRINT. UNLESS SPECIFIED DIMENSIONS IN mm [INCHES] TOLERANCES ON: 2 PLC DEC ± 0.13 [.005] 3 PLC DEC ± - ANGLES ± 0°30'		DR 11-21-88 JACK ROOT	 AMP INCORPORATED Harrisburg, Pa. 17105
MATERIAL STAINLESS STEEL		CHK 12-1-88 M. WATERS	
FINISH -		APPD 12-1-88 D. GRIESEMER	NAME SCREWLOCK, FEMALE, .050 SERIES AMPLIMITE™
		APPD 12-1-88 R. WHITEMAN	SIZE B
		PRODUCT SPEC -	FSCM NO 00779
		APPLICATION SPEC -	DRAWING NO 749066
		WEIGHT -	SCALE 5:1
			SHEET 1 OF 1