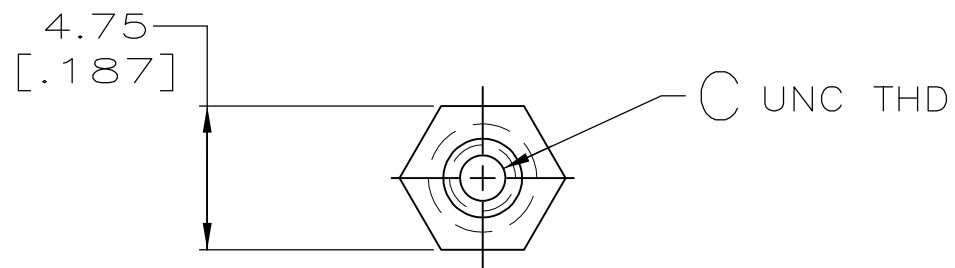
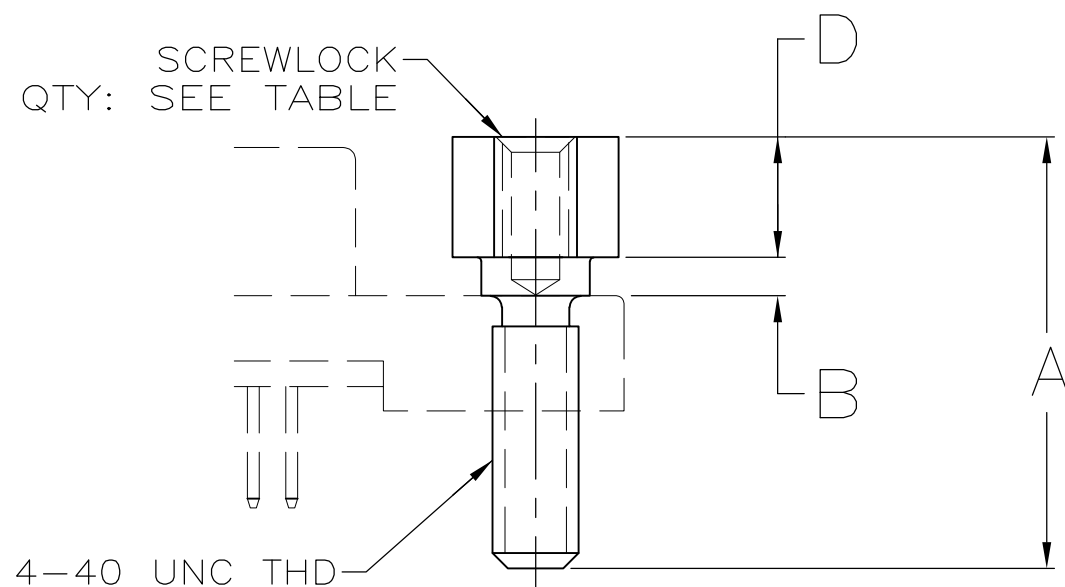


THIS DRAWING IS UNPUBLISHED. RELEASED FOR PUBLICATION
 © COPYRIGHT BY TYCO ELECTRONICS CORPORATION. ALL RIGHTS RESERVED.

LOC	DIST	REVISIONS			
P	LTR	DESCRIPTION	DATE	DWN	APVD
GP	00				
	M1	REVISED PER ECO-05-009847	09FEB06	BM	SS
	M2	REVISED PER ECO-09-021826	05JAN10	KK	AEG



1 OBSOLETE PARTS: OBSOLETE CIS STREAMLINING PER D.RENAUD/D.SINISI



1	OBSOLETE	1000	4.19 [0.165]	2-56	1.07 [0.042]	14.27 [0.562]	749087-8
	OBSOLETE	1000	3.99 [0.157]	2-56	1.27 [0.050]	14.27 [0.562]	749087-7
	OBSOLETE	2	3.71±0.05 [0.146±0.002]	2-56	1.27 [0.050]	13.92 [0.548]	749087-6
	OBSOLETE	1000	3.99 [0.157]	4-40	1.27 [0.050]	18.29 [0.720]	749087-5
		2	4.19 [0.165]	2-56	1.07 [0.042]	14.27 [0.562]	749087-4
		1000	3.99 [0.157]	2-56	1.27 [0.050]	9.65 [0.380]	749087-3
		2	3.99 [0.157]	2-56	1.27 [0.050]	9.65 [0.380]	749087-2
		2	3.99 [0.157]	2-56	1.27 [0.050]	14.27 [0.562]	749087-1
SCREWLOCKS PER BAG			D	C	B	A	PART NUMBER

THIS DRAWING IS A CONTROLLED DOCUMENT.		DWN D.GELTZ 11/24/93	Tyco Electronics Corporation Harrisburg, PA 17105-3608	
DIMENSIONS: INCHES		CHK R.STONE 02/25/94		
TOLERANCES UNLESS OTHERWISE SPECIFIED:		APVD -	NAME SCREWLOCK KIT, FEMALE, AMPLIMITE, .050 SERIES	
0 PLC ± - 1 PLC ± - 2 PLC ± 0.13 [0.005] 3 PLC ± - 4 PLC ± - ANGLES ± -		PRODUCT SPEC -	SIZE A3	
MATERIAL STAINLESS STEEL		FINISH -	APPLICATION SPEC -	CAGE CODE 00779
		WEIGHT -	DRAWING NO C-749087	RESTRICTED TO -
		CUSTOMER DRAWING		SCALE 4:1
				SHEET 1 OF 1
				REV M2